
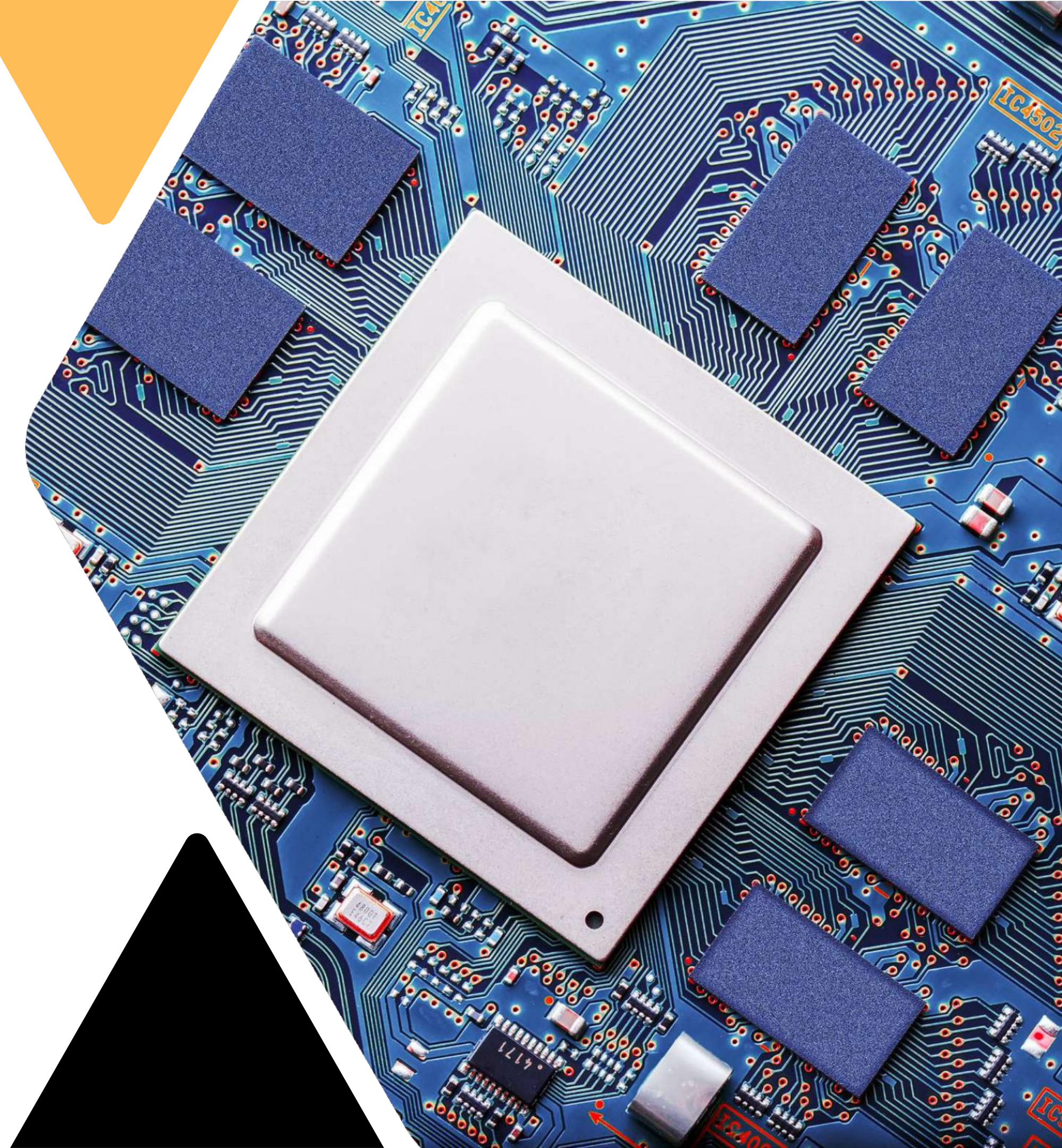


VINROX

VINROX TECHNOLOGIES

 +91-9638460085

 Info@vinrox.com



About Us

Vinrox is a team of young passionate technocrats. Design, Engineering & Electronics Contract Manufacturing Services (ECMS) company having state-of-the-art manufacturing facility and technologically advanced equipment's from world's leading brands. Vinrox believes in creating values by providing innovative and unparalleled services and solutions in the field of Electronic Manufacturing, Design & Engineering, Rapid Prototyping, New Product Introduction and Supply Chain Management.

The image shows the exterior of a building with a brick facade. Above a glass entrance door, the word "VINROX" is displayed in large, white, three-dimensional letters mounted on a red brick background. The door itself is framed by brick pillars and has a graphic of a blue and white electronic circuit board on it. A paved walkway leads to the entrance, and there is some greenery visible on the right side.

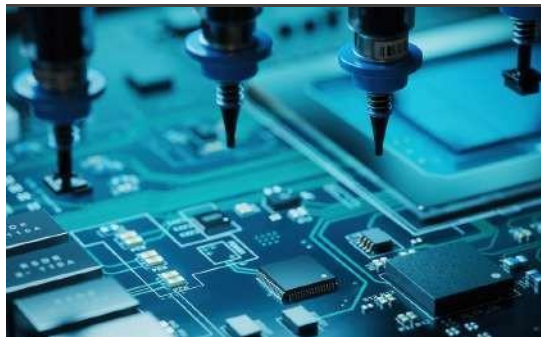
VINROX



ESTABLISHED IN 2018



450+ SKILLED FORCE



3 SMT LINES



CONCEPT TO MARKET



3 SHIFT OPERATIONS



DEDICATED PM



ROHS COMPLIANT



DUST FREE PLANTS

QUALITY SYSTEMS & MEMBERSHIPS



GREEN MANUFACTURING & INTELLECTUAL PROPERTY PROTECTION



READY
TO SIGN



VINROX CORE

DESIGN & ENGINEERING

RAPID PROTOTYPING

ELECTRONIC MANUFACTURING

SUPPLY CHAIN MNGMNT

NEW PRODUCT INTRO

INDUSTRIES



INDUSTRIAL CONTROL



IOT, IT & TELECOM

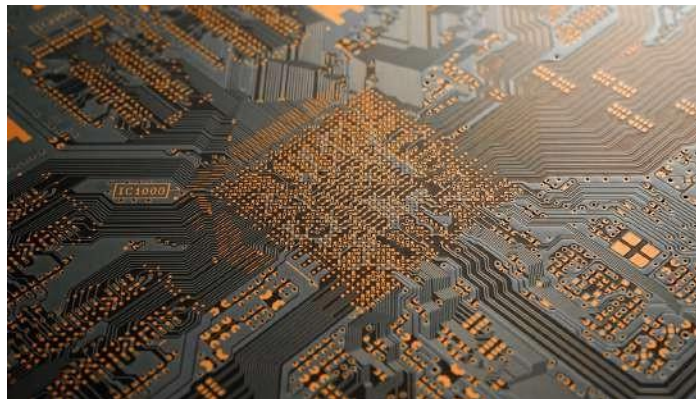


MEDICAL DEVICES



LIGHTING & POWER

END-TO-END ELECTRONIC MANUFACTURING



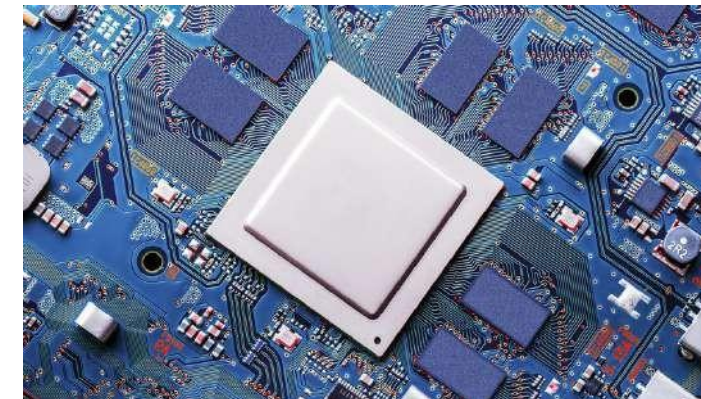
PCB

- Multi-layer Rigid, Rigid-Flex and Flex PCBs
- 1-32 Layers
- FR4, Rogers, ISOLA, CEM, Metal Base Materials
- HASL RoHS and Non-RoHS, ENIG, Immersion Tin, OSP Finishes
- Green, Red, Blue, Black, White, Yellow Colors
- HDI, Blind-Buried Vias and Impedance Control



COMPONENTS

- Components Sourcing from Authorized Dist. like Avnet, Arrow, Future, WPG, Element14 etc;
- Strong Supply Chain Management
- Online Buy from Digi-Key, Mouser, Verical, Arrow, Avnet, LCSC for Prototype/small jobs
- Spot buy from genuine source with test certificate



TURNKEY PCBA

- 01005 to 150mm SMT
- Micro BGA/ Large BGA, Fine Pitch Components, GSM/Bluetooth Modules and odd component mounting capabilities
- Thru Hole Assembly
- Conformal Coating
- Epoxy Potting
- PCBA Programming
- Chip Level/Board Level PCBA Testing by ICT or Dedicated Jigs/Fixtures



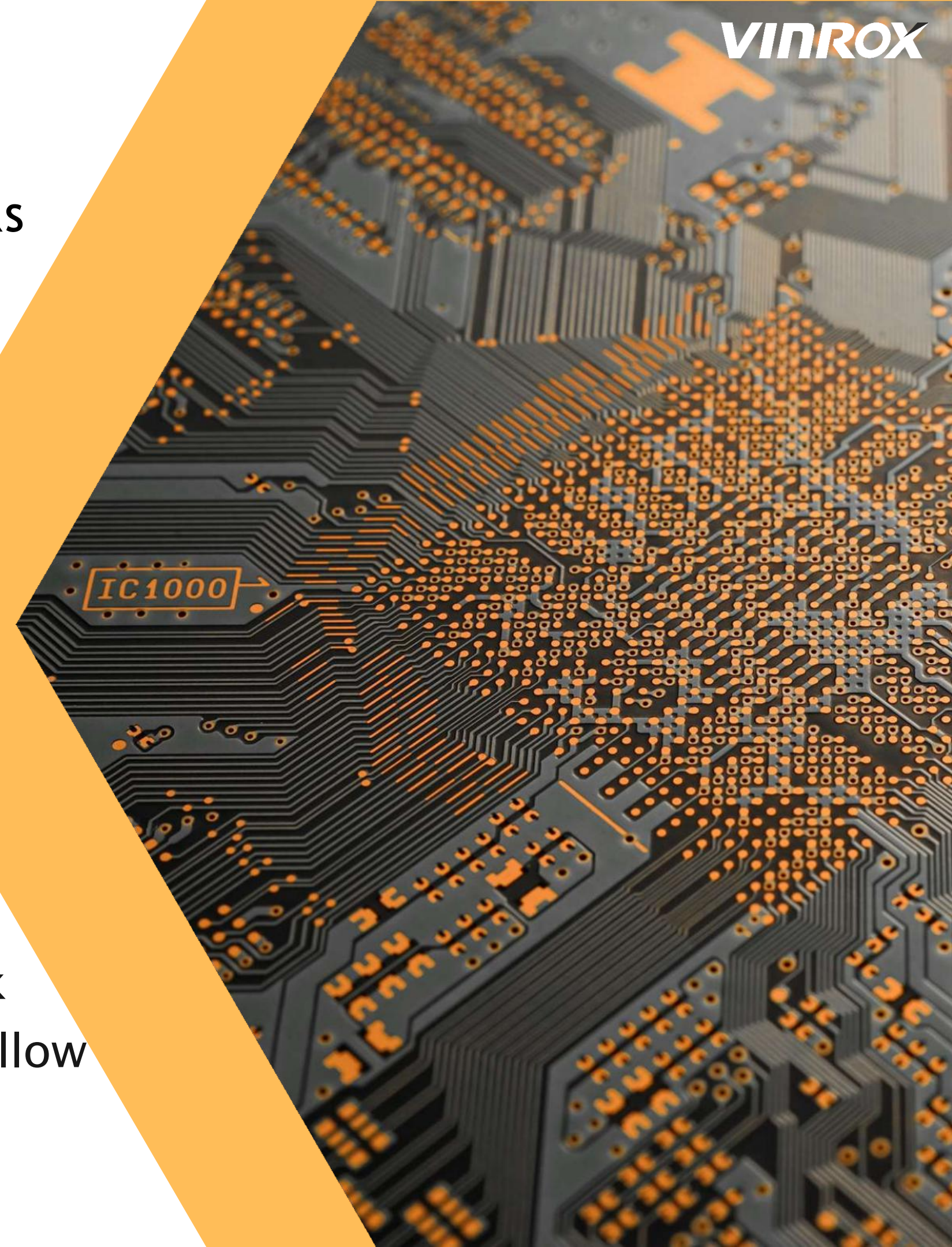
BOX-BUILD

- Complete Product Top Level Assembly
- Cable Assembly and Wire-Harnessing
- Product Programming and End-of-Line Testing
- Labels and Laser Marking on Product
- Corrugated Product Packaging
- Shrink Wrap Packaging

PRINTED CIRCUIT BOARDS

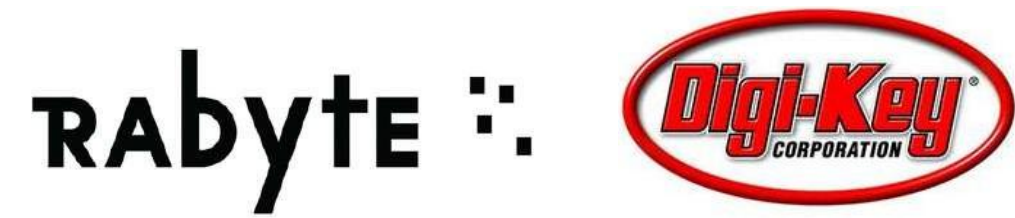
VINROX PARTNERS WITH GLOBAL PCB MANUFACTURERS

- Rigid PCB Layers > 1–32 Layers
- Flex PCB Layers > 1–8 Layers
- Rigid–Flex PCB Layers > 2–20 Layers
- MCPCB Layers > 1–4 Layers
- FR4, ROGERS, MCPCB, PTFE & Hi Tg
- HDI, Controlled Impedance, Blind–Buried Vias, Vias in Pad & Caping
- Min TRace & Spacing > 2.5/2.5 Mils
- Min Drill > 0.15mm Laser Drill
- Finish > HASL RoHS, ENIG, OSP, Hard Gold, Soft Gold, Immersion Tin & Conductive Ink
- Colors > Green, Red, Blue, White, Black & Yellow
- 100% E–Test (BBT) & Visual Inspection

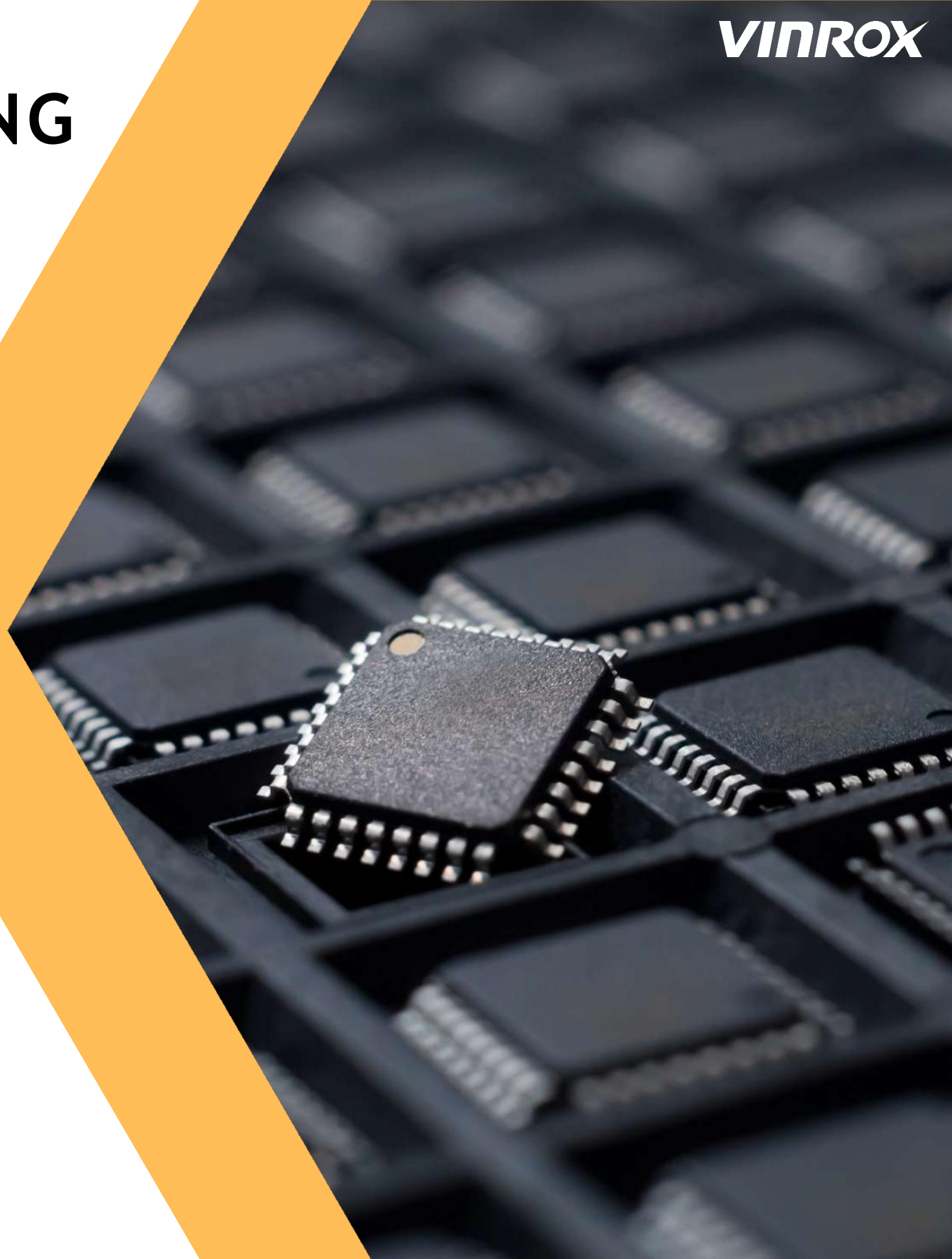


COMPONENTS/BOM SOURCING

VINROX PARTNERS WITH ALL MAJOR GLOBAL
AUTHORISED DISTRIBUTORS



COMPONENTS



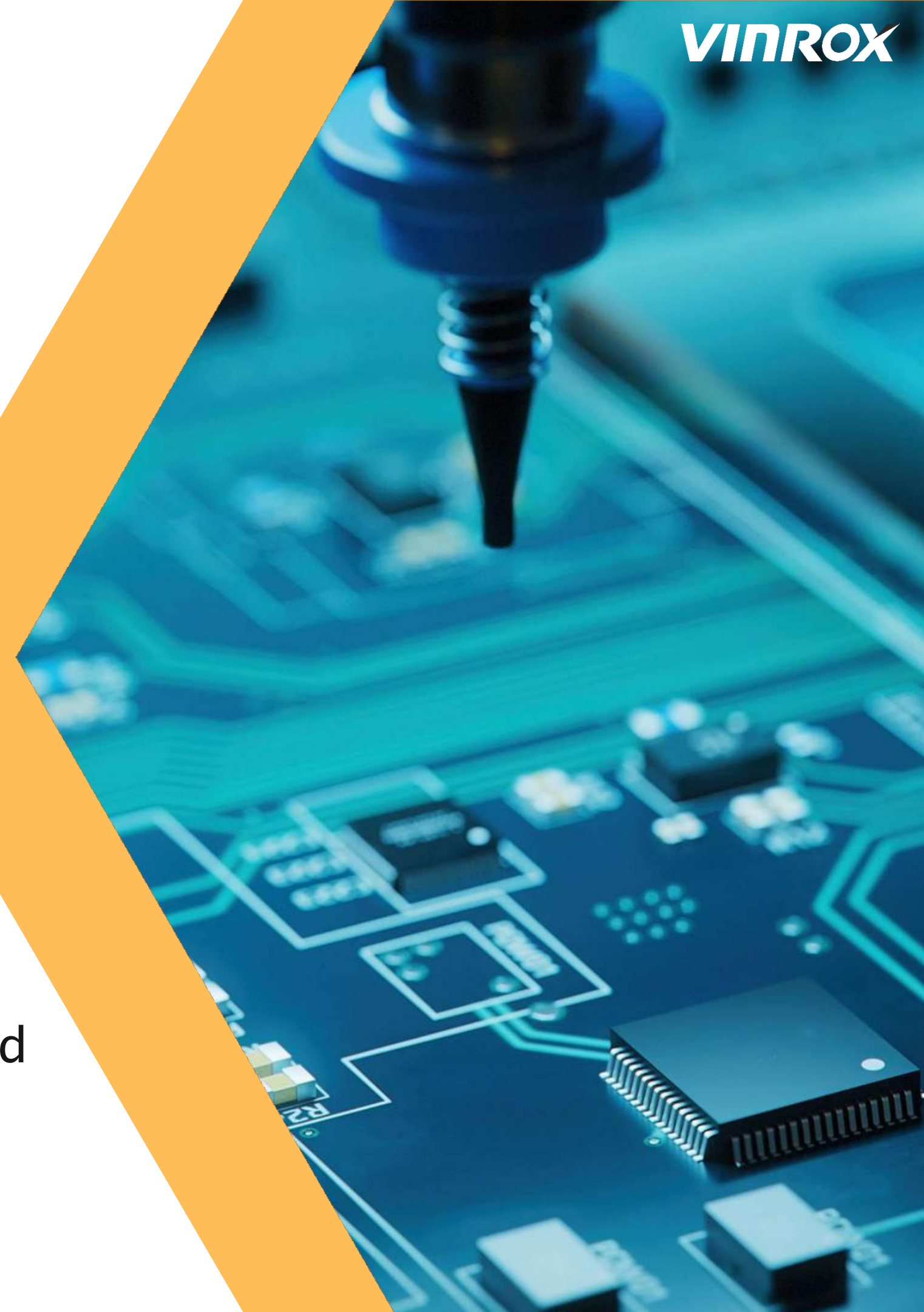
STATE-OF-THE-ART FACILITY

- Located in the heart of Industrial Corridor Area
- ESD Floors & Human ESD Control
- Centrally Air Conditioned Dust Free Environment
- Easy access to Airport, Seaport and Road Transportation across INDIA
- 450+ Skilled Engineers and Technicians



CAPABILITIES & CAPACITY

- SMT > 01005 to 102mm SMT Components Size
- SMT > Micro BGA/Large BGA, CSP, Flip-Chip, Fine Pitch, QFN & Modules/SOM
- PCB Size: 510mmx 400mm
- Flex & Rigid-Flex PCB Assembly
- Thru Hole Assmbly
- No MOQ, Proto, High-Mix Low Volume or High Volume
- IC Programming, Board Programming & Board Level/System Level Testing
- Conformal Coating • Epoxy Potting
- Cable/Wire/Flex Cable Soldering on the Board
- 10000-20000 PCBA per Day
- 3000-5000 Products/Box-Build per Day



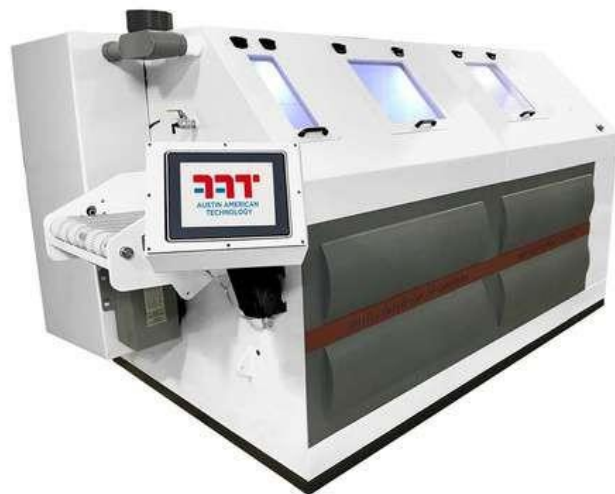
3 ADVANCED SMT LINES

- PASTE PRINTERS > GKG G-TITAN
- 3D SPI > KOH YOUNG KY8080
- P & P > FUJI AIMEX 3C
- P & P > PANASONIC D3A+TT2
- REFLOW: HELLER 1936 & JT RS800
- KIC PROFILER
- 3D AOI > KOH YOUNG ALPHA ZENITH
- 2D AOI > TRI
- X-RAY > GLENBROOKE

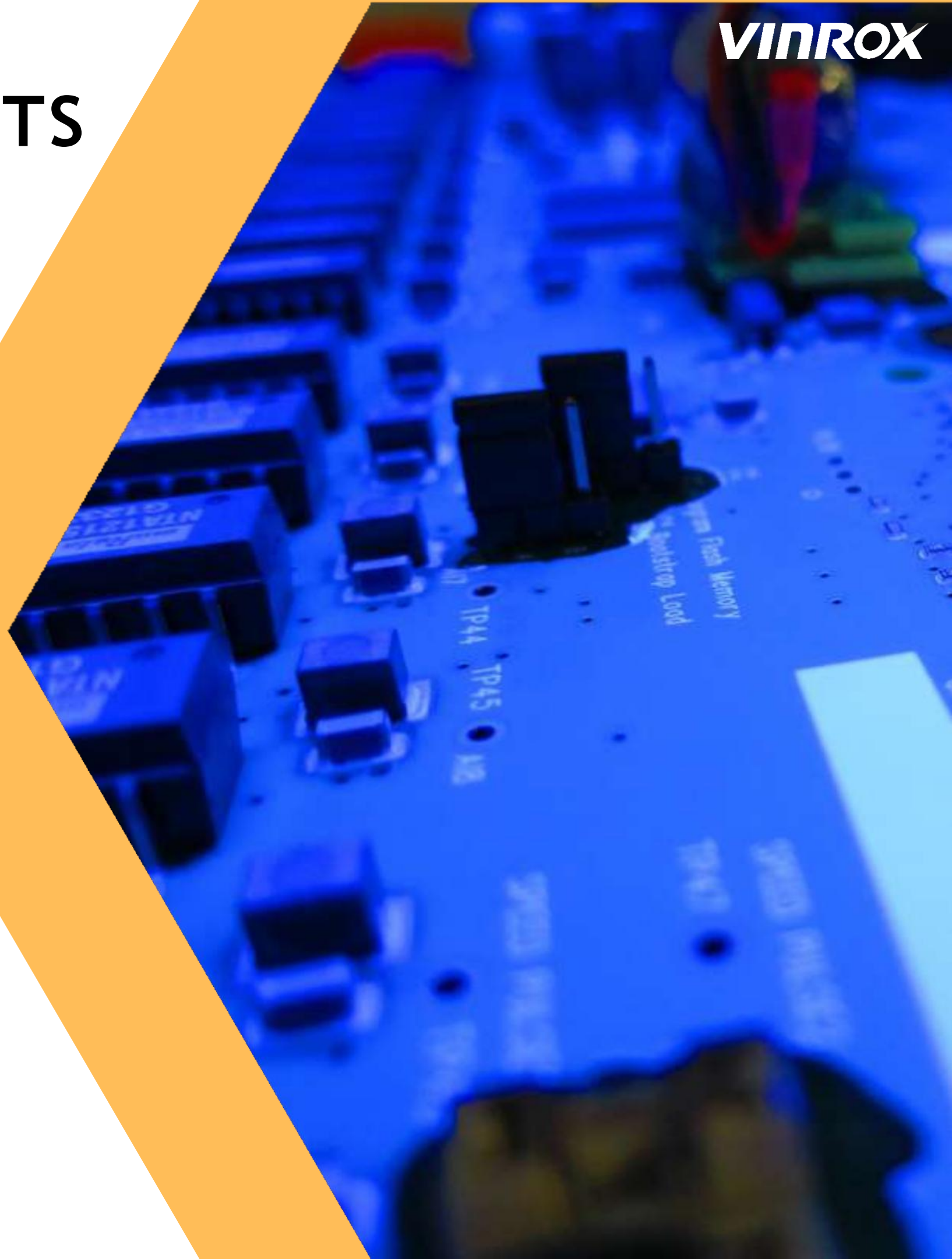


SUPPORTING EQUIPMENTS

- LASER MARKING SYSTEM > MAHI SYS
- WAVE SODLERING MACHINE: ESMT
- AQUA WASHLINE > AUSTIN-AMERICAN
- AIR COMPRESSORS > INGERSALL RAND
- V-GROOVE > EMS
- EPOXY POTTING > GRACO PR70
- CONFORMAL COATING BOOTH > SCH
- AUTOMATIC BGA REWORK STATION
- ELECTRICAL SCREW DRIVERS & FEEDERS



CONFORMAL COATING ROBOTS



IN CIRCUIT TESTER KYORITSU FOCUS 2000



ICT FOCUS 2000

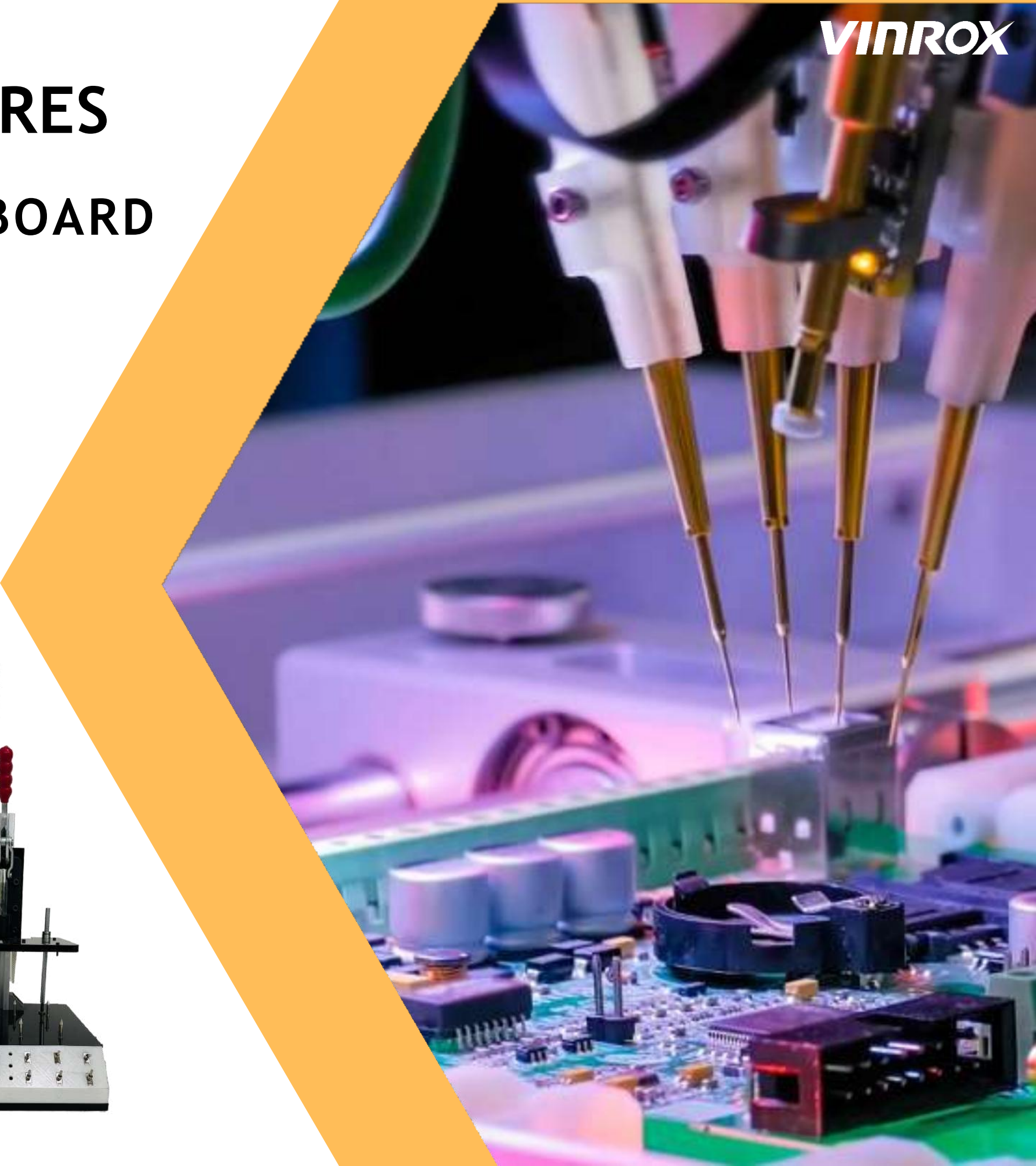


JIGS & FIXTURES

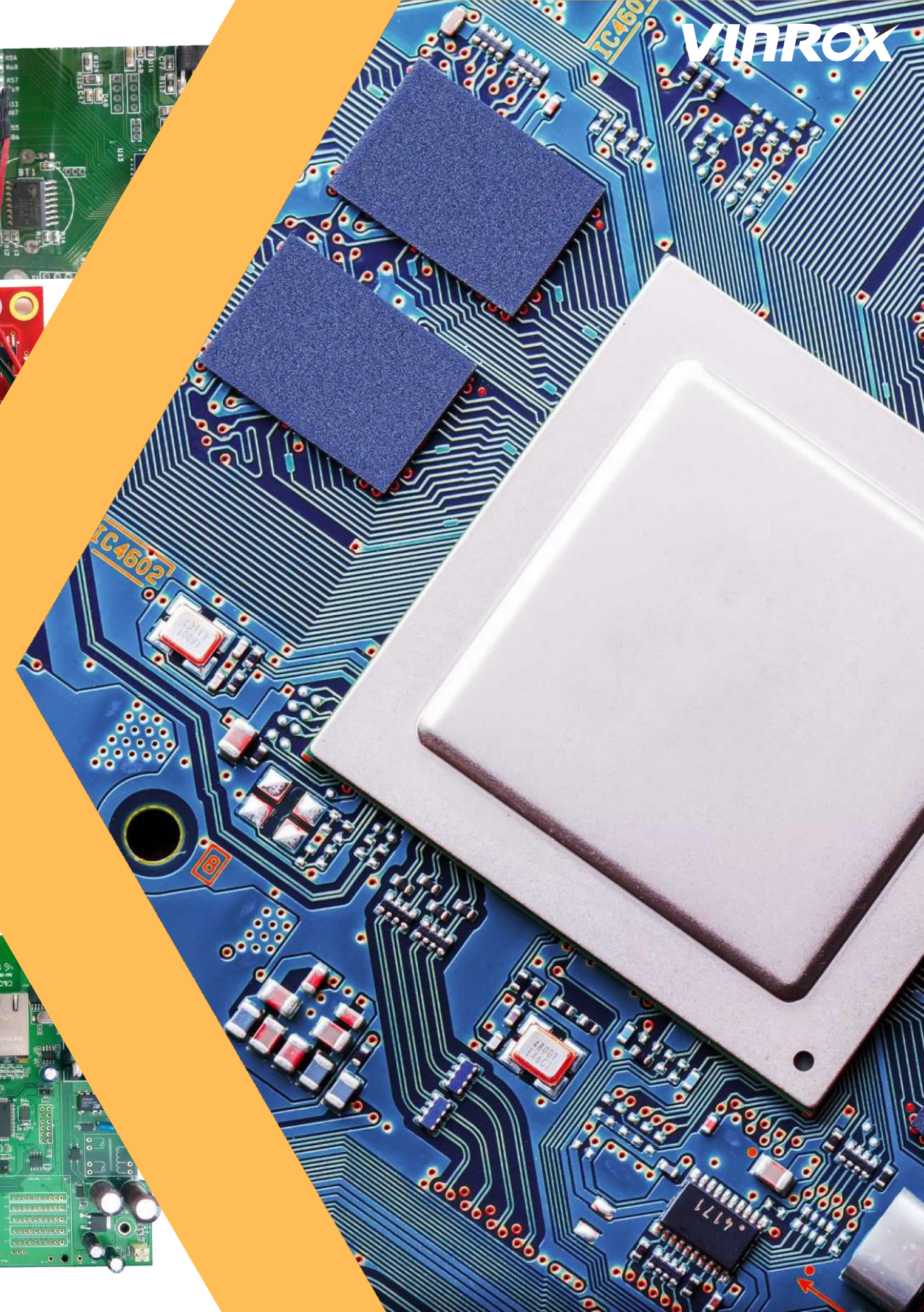
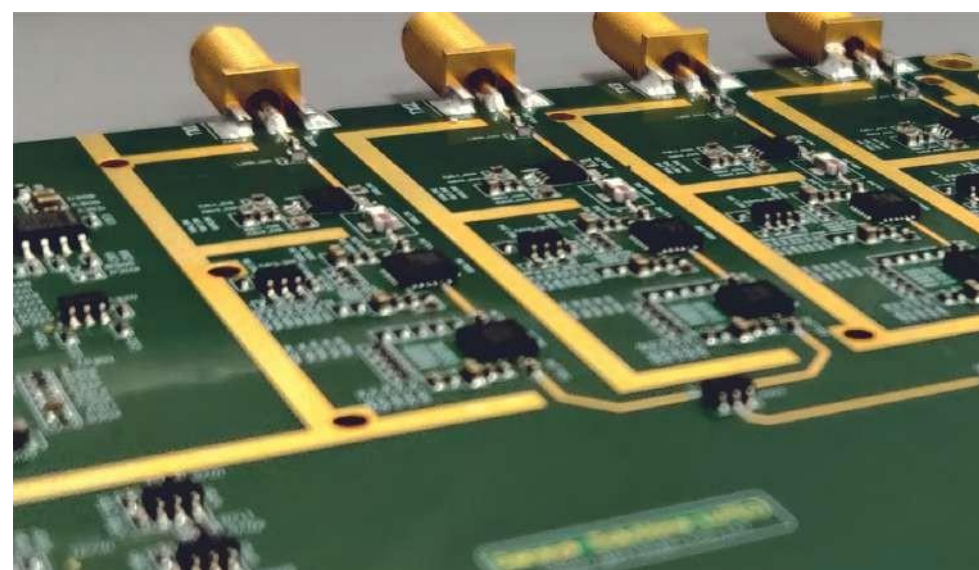
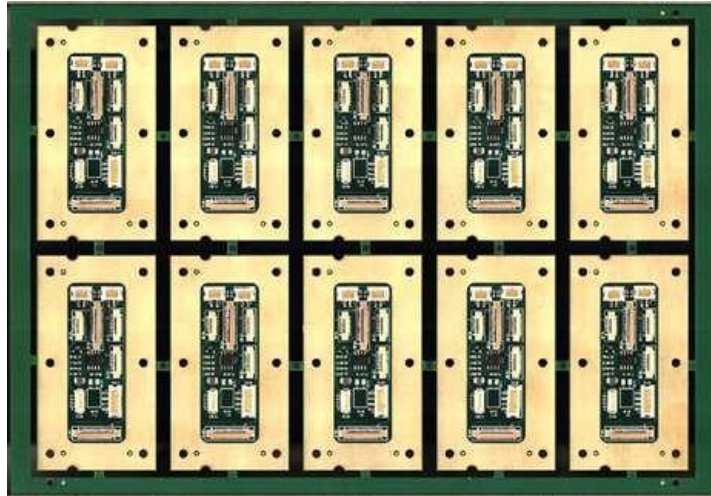
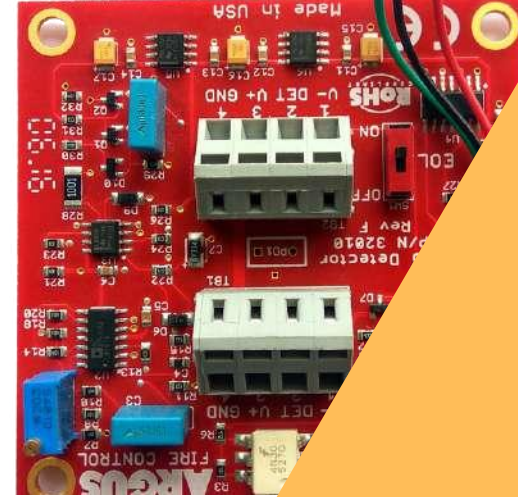
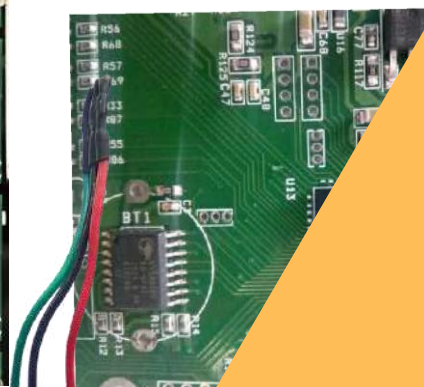
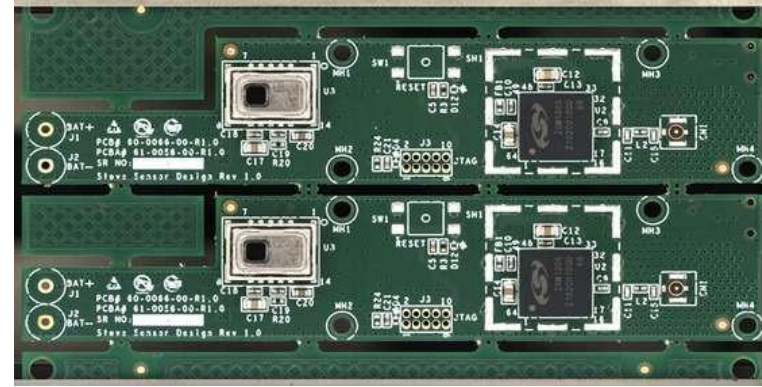
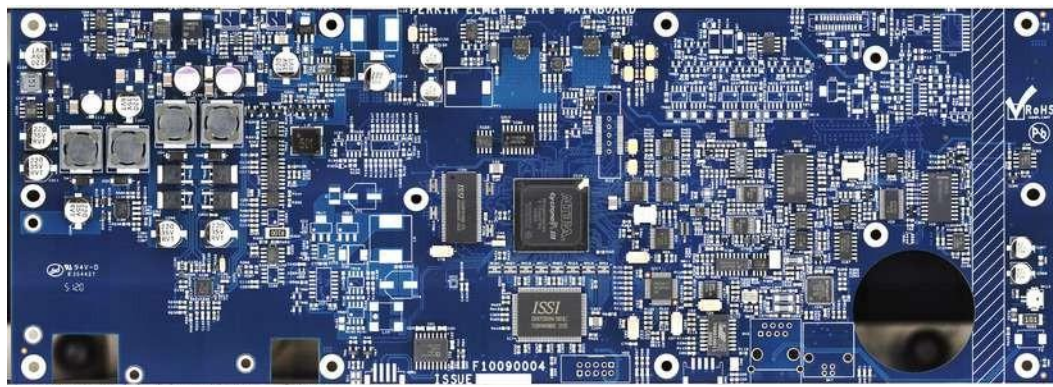
VINROX

PCBA TEST JIGS & FIXTURES

VINROX DESIGNS & DEVELOPES BOARD SPECIFIC TEST JIGS & FIXTURES



PCBA SAMPLES



TURNKEY BOX-BUILD / TLA

- 10 Advanced Box-Build /Top Level Assembly Lines
- Experienced and Skilled Assemblers Force
- Assembly lines equipped with PCs, Scanners, Printers & Marking Machines
- Equipped with IP Cameras to monitor production process remotely by customer.



ASSEMBLY LINE EQUIPEMENTS

- Printers & Scanners



- Laser Marking Systems



- Ultra-Sonic Plastic Welding Machine



PLASTIC MOLDS & COMPONENTS

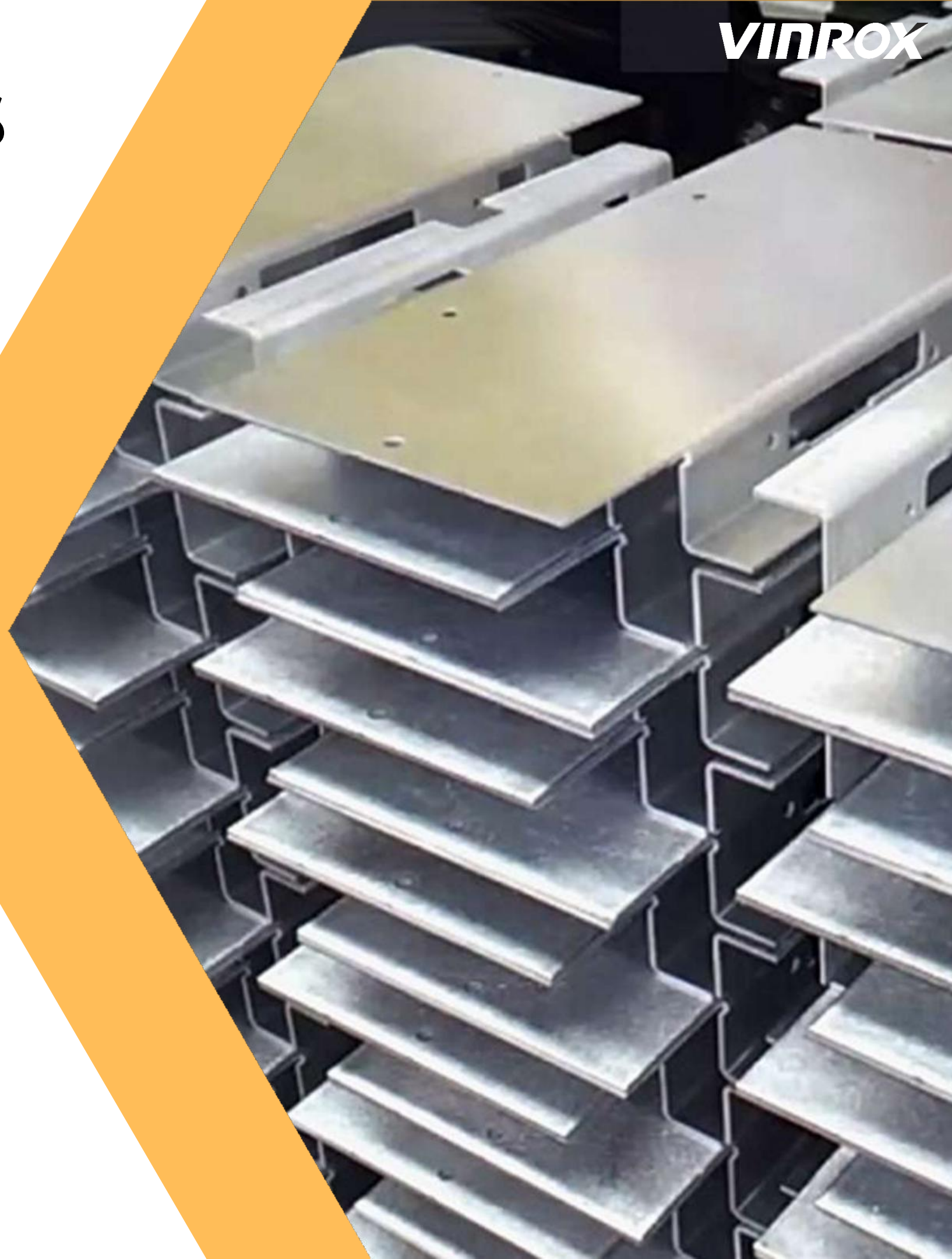
- Plastic Injection Molds/ Tools
- 30 Injections Molding Machines from 60 Tones to 1000 Tones from leading brands like Feromatik Milacron, Engel, L&T and Arbourg with Automatic Robot pick up
- Can Process all kind of Engineering Plastics
- Pad Printing on Plastic Parts
- Plastic Parts sub-assemblies
- Over-Molding & Insert Molding



METAL PARTS & ENCLOSURES

**VINROX PARTNERS WITH FABRICATORS
AND EXTRUDERS LOCALLY**

- Enclosure & Plates > Sheet Metal Fabrication
- Blanked and Turned Parts
- Aluminium Extrusion
- Pressure Die-Casting and Gravity Casting
- Hi-Tech Laser cutting and Bending machines
- Tools & Dies for Metal Cutting
- Powder Coating
- Anodizing Process



OVERLAYS & PACKAGING

VINROX PARTNERS WITH KEYPAD OVERLAY
MANUFACTURERS AND PACKAGING
DESIGNERS & MANUFACTURERS

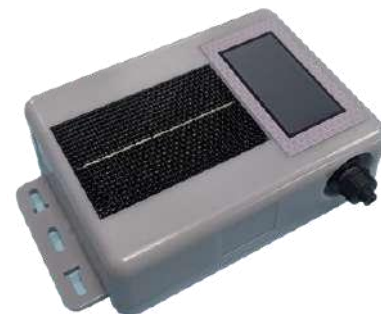
- Overlay PC Labels
- Membrane Keypads
- Corrugated Box
- Luxury Product Packaging
- Jumbo Shipment Box



PRODUCTS



Supported



VINROX



CABLE ASSEMBLY & WIRE HARNESS

- Fully Automatic Wire Stripping & Cutting Machines
- Precision Crimping Machines
- Sleeve Cutting Machines
- Refers to IPC/WHMA-A-620



CABLE ASSEMBLY & WIRE HARNESS

CAPACITIES & CAPABILITIES

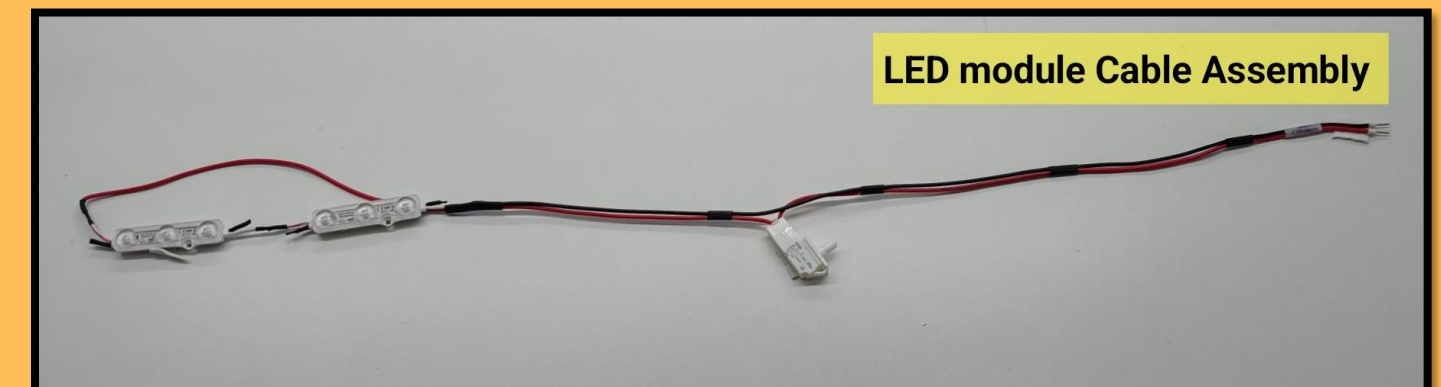
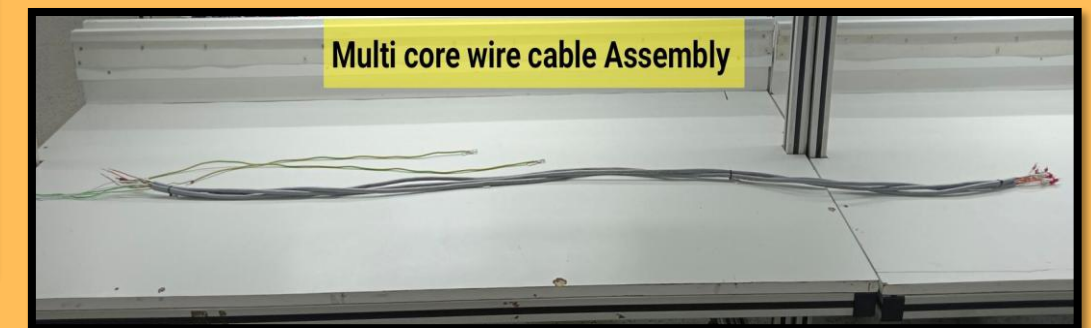
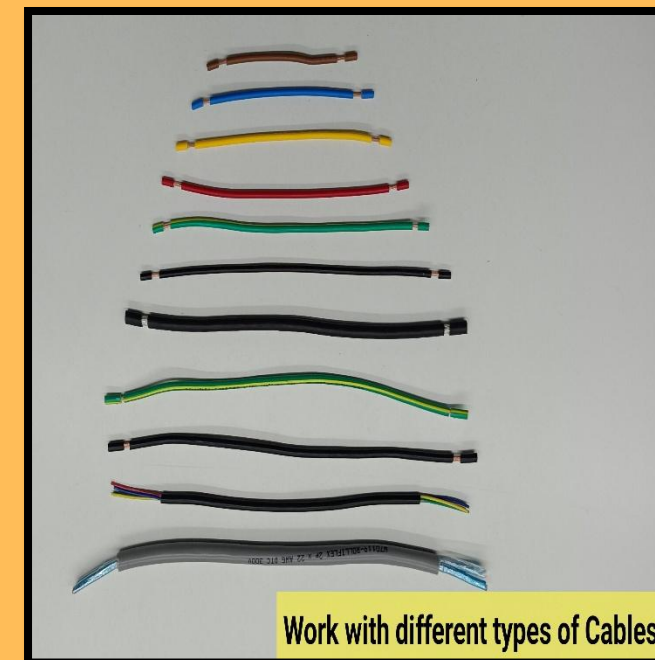
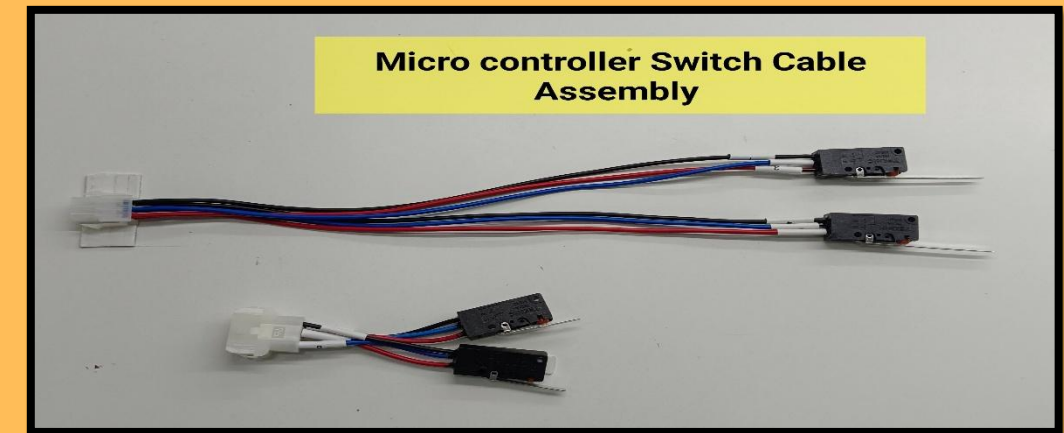
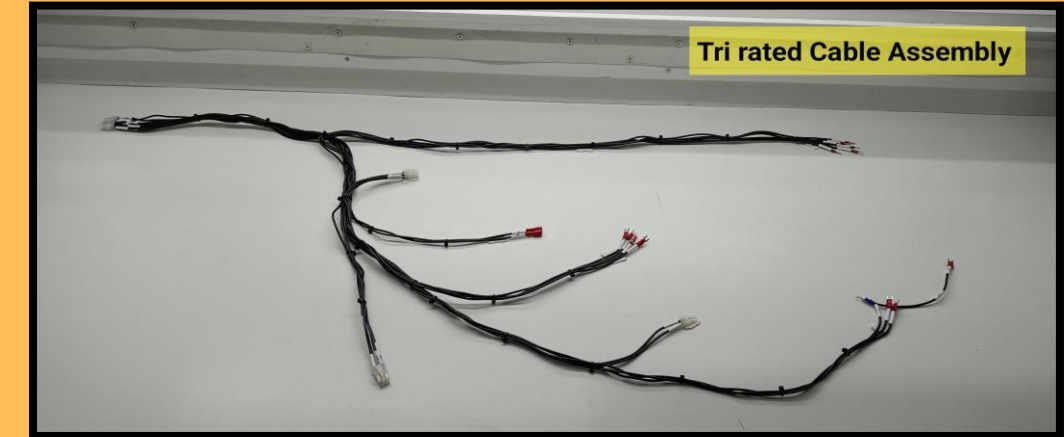
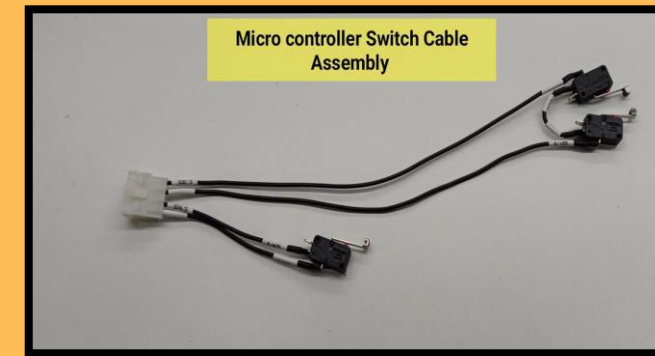
- 100% continuity and insulation resistance testing (Meger Testing)
- Visual, mechanical, and pull-force verification.
- Soldered, crimped, and molded connector terminations.
- Supports multiple wire gauges and connector configurations.
- Flexible production for low to high volumes
- We have Two cable assembly Line.
- 1500–2000 Cable Assembly Per day



CABLE ASSEMBLY & WIRE HARNESS

We support all types of cables

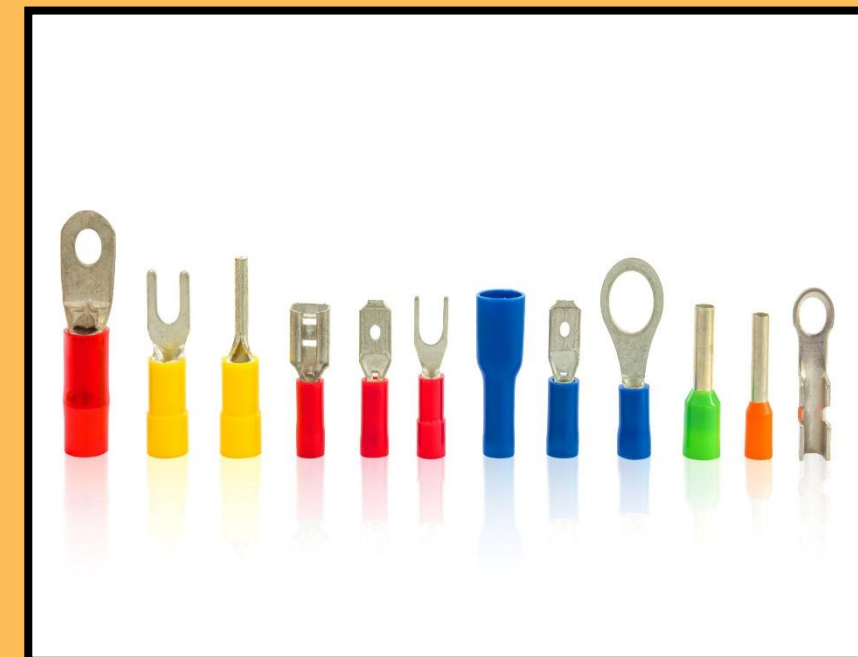
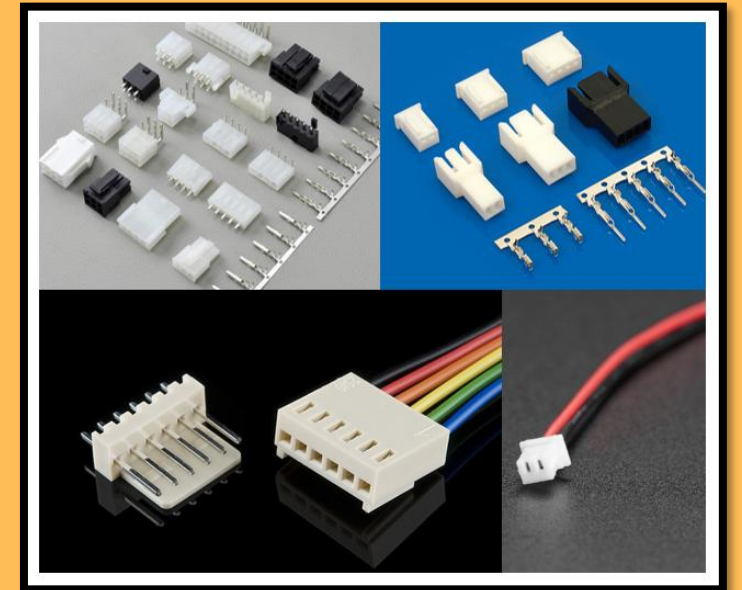
- Tri -Rated Cable Assembly
- LED Module Cable Assembly
- Different Types of Micro Controller Switch Cable Assembly
- Multi Core Wire Cable Assembly
- We can also support Customized Cable Assembly



CABLE ASSEMBLY & WIRE HARNESS

Terminal, Connectors & Supporting Equipment's

- Manual KLAUKE Crimping Machine
- Ferrule Printing Machine
- Different Types of Terminals and Connect Sockets
- Different Types of Connectors
- Hot air Gun for Heat Shrink
- Different types of Applicator for Crimping



CABLE ASSEMBLY & WIRE HARNESS

Our Major Customers:



CUSTOMERS



DESIGN & ENGINEERING

- Hardware Platform Selection & Design
- Hardware Schematic Design
- PCB Design
- Embedded Software Development
- Test System Development
- Signal Integrity & Measurements
- Design as per Regulatory Compliance, Testing & Certification
- Mobile Application Design & Development
- Industrial Design & Concept Generation
- Detailed Mechanical Engineering, Design For Manufacturability & FMEA
- Tooling Vendor Selection, Qualification & Tool Development

NPI & VALUE ENGINEERING

- Quick Turn RFQ Management for Pilot Production
- BoM Analysis, Part Selection and Obsolescence Management
- DFM Analysis and Design Feedback
- Test System Development
- Cost Reduction through Alternate Vendor , Component & Material Selection
- AVL Management
- Complete Product Revamping & Introducing New Technologies
- Metal enclosure to Plastic conversion to enhance Look to achieve Cost Reduction
- Sourcing of Hard to find Components



FUTURE PLANS & MISSION

- Want to be the largest mid-volume EMS Player in the western region by 2026
- Protoline from Mycronic for small volume and quick turn around by End of 2025
- Adding New Facility of 50,000 Sq. Feet by April 2026
- Adding 100 people work force by 2026
- Adding full 2 SMT Lines by 2026
- \$25 Millions Revenue by 2026



CUSTOMERS

VINROX



RECOGNITIONS



VINROX





VINROX

VINROX TECHNOLOGIES PVT. LTD.

336/22, GIDC, MAKARPURA,
VADODARA-390010, GUJARAT, INDIA

 +91-9638460085  Ashvin@vinrox.com

NORTH AMERICA

 +1-704-222-0613  Soham@vinrox.com

 +1-704-942-5294  Mark@vinrox.com

www.vinrox.com

THANKS!!!

