



spm castings

Castings manufacturer

INTRODUCTION



- ❖ Established in 1989 by Mr. Sunil Pandit
- ❖ Located in 5000 sq.ft plot at MIDC Chinchwad.
- ❖ Aluminum die Casting (GDC & PDC) and Sand casting
- ❖ Specialty: Non Ferrous alloys
 - (aluminum, brass, bronze, copper, zinc, etc.)
- ❖ In-house capacity for
 - Casting
 - Machining
 - Die modelling and simulation (Jointly working with supplier)



VISION AND MISSION



❖ VISION:

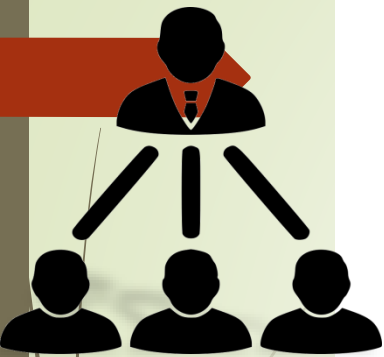
- "To be a company creating products with complete honesty and ownership towards customer excellence and satisfaction."

❖ VALUES:

- Purpose
- Responsibility
- Virtue



ORGANIZATION CHART



Sunil Pandit

Managing Director

Shrenik Pandit

Director of Operations
Sales and Marketing Head

Sudhakar Sail

Production Head - Foundry

Shashikant Dalavi

Production Head - Machining

Ajit Mehra

GDC - Supervisor

Ram Jadhav

Sand Casting Supervisor

Ambika Singh

Machining Supervisor

Uday Chavan

Machining Supervisor

GDC Team

Sand Casting Team

VMC Team

CNC Team

Vaishnavi Pandit

Account and Finance Head

Murlidhar M

Quality and Process Improvement



CAPACITY AND LIST OF MACHINES

► Foundry:

- 2 Electro furnaces with capacity 300 kg/each.
- GDC Machine. 450x450 platen size.
- Hydraulic Ejection system
- Bench vice.
- Shell/core filling fixture.
- Belt Grinder 1 no.
- Temperature monitoring system.
- GDC Tilting machine.



CAPACITY AND LIST OF MACHINES

➤ Machining:

- Vertical milling machine – AMC-450 (800mmx600mm)
- CNC machine – Superjobber (300mm dia.)
- Vertical drilling machine (3 no.)
- Lathe machine (1 no.)
- Milling machine (1 no.)
- M1TR drilling machine - (1 no.)
- CNC machine (in process)
- Air compressor.



Material Testing Lab Equipment

- Nitrogen Degassing Unit
- DI Testing Equipment
- Spectro Machine for Chemical Testing of Aluminium Samples



Measuring Equipments

- Trimos
- Digital Height Guage
- Digital Vernier
- Digital Inside Vernier Caliper
- Vernier Caliper
- Plain Plug Guages
- Thread Guages
- Dials
- Depth Vernier Caliper
- Surface Plate 2000X2000 mm





TEE Casting



T90 Water Pump



UTD Water Pump



Hand Fuel Pump



Connector pump



Cylinder Head



DEFIANCE CASTINGS





H.T Clamp



P.G Clamp



0.1.0.2 Clamp



**❖ ELECTRIC POWER TRANSMISSION
HARDWARE'S**



**H.T
connector**



**Temperature
cease**



**U
connector**



T pump



❖ PIPING CASTINGS





❖ DC MOTOR PARTS



❖ MOTOR FLANGES



❖ COUPLING CASTINGS



❖ PNEUMATIC VALVES.



❖ CYLINDER BLOCK CASTINGS



OUR VALUABLE CLIENTS



DUNCAN



ANANT INDUSTRIES



POLYBOND



SAI CONTROL SYSTEM

ISO 9001 : 2008 Certified Company



Kirpekar
SOLUTIONS FOR A JOINT WORLD



**The
PARSHWANATH**
METAL PROCESSORS (I) PVT. LTD.



Hind Industries



OUR VALUABLE CLIENTS



- ❑ PETHE BRAKE MOTORS PVT. LTD.
- ❑ AJAY SYSCON PVT LTD.
- ❑ DRIVE GEAR POWER TRANSMISSION PVT LTD.
- ❑ DHARIA ELMECH.
- ❑ FEATHER FLOW CONTROL SYSTEMS
- ❑ HITECH MOTORS.
- ❑ KULKARNI TRANSPower PVT LTD.
- ❑ PLAZMA TECHNOLOGIES PVT LTD.
- ❑ PMG POLYMERS PVT LTD.
- ❑ POLYBOND INDIA PVT. LTD.
- ❑ SHARP ENGRAVERS.
- ❑ SAI CONTROL SYSTEMS.
- ❑ VINTECH INDUSTRIES PVT LTD.
- ❑ AGHOLI ENGINEERS.
- ❑ J.B.ADVANI & CO. PVT. LTD.
- ❑ KIMAYA ENTERPRISES.



Thank
you



Save Our Water
and Our Trees!



8/3-2, D-3. Block,
MIDC, Chinchwad
Pune- 411019
Maharashtra.

