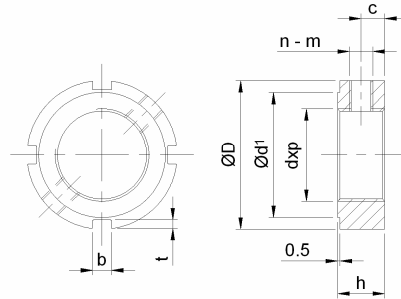


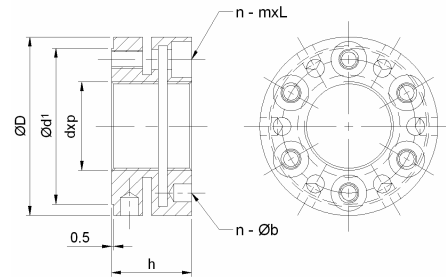
PRECISION LOCKNUT



(RADIAL LOCKING)

PART NO.	d x p	D	h	b	t	d _i	c	n - m		
BLR M6	M 6 x 0.5	16	8	3		12	4	2 - M4		
BLR M8	M 8 x 0.75	16				12				
BLR M10	M 10 x 1	18				14				
BLR M12	M 12 x 1	22				18				
BLR M15	M 15 x 1	25	10	4	2	21	5	2 - M5		
BLR M17	M 17 x 1	28				23				
BLR M20	M 20 x 1	32				27				
BLR M22	M 22 x 1.5	34	12	5		29	6	3 - M5		
BLR M25	M 25 x 1.5	38				33				
BLR M30	M 30 x 1.5	45				40				
BLR M32	M 32 x 1.5	48				43				
BLR M35	M 35 x 1.5	52				47				
BLR M38	M 38 x 1.5	56	14	6	2.5	50	7	3 - M6		
BLR M40	M 40 x 1.5	58				52				
BLR M42	M 42 x 1.5	60				54				
BLR M45	M 45 x 1.5	65				59				
BLR M50	M 50 x 1.5	70				64				
BLR M55	M 55 x 2.0	75	16	7	3	68	8			
BLR M60	M 60 x 2	80				73				
BLR M65	M 65 x 2	85				78				
BLR M70	M 70 x 2	92	18	8	3.5	85	9	3 - M8		
BLR M75	M 75 x 2	98				90				
BLR M80	M 80 x 2	105				95				
BLR M85	M 85 x 2	110				102				
BLR M90	M 90 x 2	120	20	10	4	108	10			
BLR M95	M 95 x 2	125				113				
BLR M100	M 100 x 2	130				120				
BLR M105	M 105 x 2	140	22	12	5	126	11	3 - M10		
BLR M110	M 110 x 2	145				133				
BLR M120	M 120 x 2	155	24						138	12
BLR M130	M 130 x 2	165							138	
BLR M140	M 140 x 2	180	26	14	6	160	13			
BLR M150	M 150 x 2	195				171				

PRECISION LOCKNUT



(CLASP LOCKING)

PART NO.	d x p	D	h	d ₁	n	b	n - m x L		
BLC M12 x 1	M12 x 1	26	15	22	3	3	3 - M3 x 10		
BLC M16 x 1.5	M16 x 1.5	34	18	29	4	4	4 - M4 x 12		
BLC M17 x 1	M17 x 1	37		32					
BLC M18 x 1	M18 x 1	38		33					
BLC M20 x 1	M20 x 1	40		35					
BLC M20 x 1.5	M20 x 1.5			37					
BLC M22 x 1.5	M22 x 1.5	42		39					
BLC M24 x 1.5	M24 x 1.5	44		40					
BLC M25 x 1.5	M25 x 1.5	45	20	43		5	4 - M4 x 14		
BLC M28 x 1.5	M28 x 1.5	46	45						
BLC M30 x 1.5	M30 x 1.5	48	22	47				5	4 - M4 x 16
BLC M32 x 1.5	M32 x 1.5	50		50					
BLC M35 x 1.5	M35 x 1.5	53		53					
BLC M38 x 1.5	M38 x 1.5	56		55					
BLC M40 x 1.5	M40 x 1.5	58		56					
BLC M42 x 1.5	M42 x 1.5	60		60					
BLC M45 x 1.5	M45 x 1.5	64	25	65	6	6 - M4 x 18			
BLC M48 x 1.5	M48 x 1.5	68		66					
BLC M50 x 1.5	M50 x 1.5	70		68					
BLC M52 x 1.5	M52 x 1.5	72		70					
BLC M55 x 1.5	M55 x 1.5	75	26	77		6	6 - M5 x 20		
BLC M58 x 1.5	M58 x 1.5	78		79					
BLC M60 x 1.5	M60 x 1.5	82		28				80	
BLC M62 x 1.5	M62 x 1.5	84	83						
BLC M65 x 1.5	M65 x 1.5	88	87						
BLC M70 x 2	M70 x 2	92	93						
BLC M75 x 2	M72 x 2	98	32	99		8	6 - M6 x 22		
BLC M80 x 2	M80 x 2	105		104					
BLC M85 x 2	M85 x 2	110		114					
BLC M90 x 2	M90 x 2	120		119					
BLC M95 x 2	M95 x 2	125		123					
BLC M100 x 2	M100 x 2	130		133					
BLC M105 x 2	M105 x 2	140							

BLC M110 x 2	M110 x 2	145		138			
BLC M115 x 2	M115 x 2	150	34	143			
BLC M120 x 2	M120 x 2	155		147			
BLC M125 x 2	M125 x 2	160	36	152			6 – M6 x 25
BLC M130 x 2	M130 x 2	165		156			
BLC M135 x 2	M135 x 2	175		166			
BLC M140 x 2	M140 x 2	180	38	170			8 – M6 x 25
BLC M145 x 2	M145 x 2	190		179			
BLC M150 x 2	M150 x 2	195		183			
BLC M155 x 3	M155 x 3	200		188			
BLC M160 x 3	M160 x 3	205		193	8	10	
BLC M165 x 3	M165 x 3	210		196			
BLC M170 x 3	M170 x 3	215	40	200			8 – M8 x 30
BLC M180 x 3	M180 x 3	230		214			
BLC M190 x 3	M190 x 3	240		223			
BLC M200 x 3	M200 x 3	250		232			