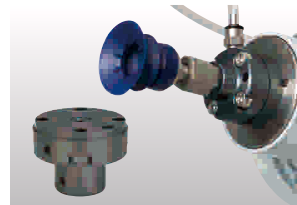


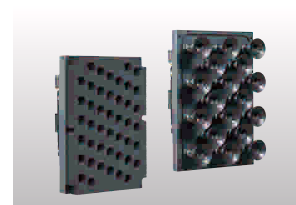
EOAT & Accessories for Robot



Vacuum & Air Control Unit HKU
Unitized equipment necessary for supplying vacuum and compressed air to the EOAT



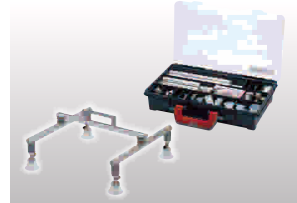
Mounting Flange HS
This flange can mount single suction cup or gripper to the end of robot arm



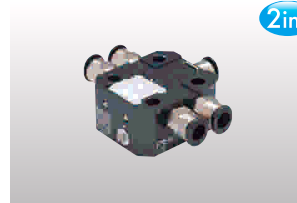
Vacuum Gripper VMG
Suitable for conveyance of large work-piece such as sacks, boxes, exterior walls, etc.



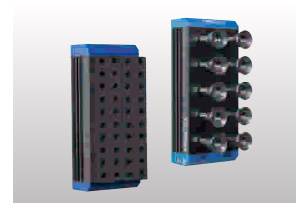
Vacuum Modular Kit HML for EOAT
Max. 16 vacuum cups can be mounted on this modular kit



Vacuum cups Trial Kit
Trial Kit to test how the suction cup works against the work-piece



EOAT Direct-mount Vacuum Ejector VYR
Vacuum ejector direct-mountable on the robot arm with P.C.D. 31.5



Vacuum Gripper VLG
For conveyance of objects with rough surfaces, such as exterior walls, corrugated boxes, etc.

Vinyl, Sheets
Thin Work-piece



Ultrathin Series

Lip part is soft and does not crease work-pieces.

Stew · Snack, Pouch Package
Packaging Bag



For Packaging Bag Series

Excellent flexibility to follow the shape of work-pieces. Due to its multi-bellows shape, suitable where there is no space to mount holders.

VMG Gripper
Cardboard Box



Aligned Vacuum Pads

Cardboard boxes and bagged items.

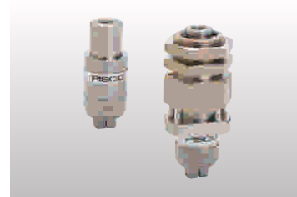
Sponge Gripper
VRG Gripper



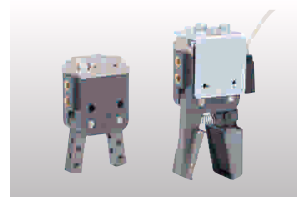
Rectangular Ring

Large multiwall paper bags. Shrink-wrapped plastic bottles.

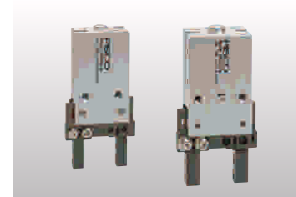
Grippers



Angular Opening Gripper
Enables internal-gripping of ring-shaped objects and press-fit work as well

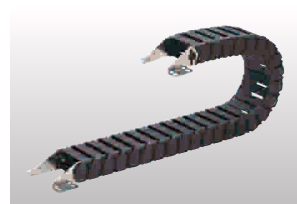


Angular Gripper
Enhanced sensor enables detection of potential gripping failure

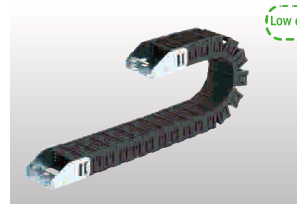


Parallel Gripper - Multi-acting type
Offers high precision and high gripping force with extra-small·light-weight body

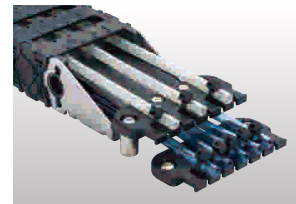
Plarailchain Cable Carriers



Plarailchain SD
Sturdy and durable enough even for high travel speed applications



Plarailchain SC·SCL
The connecting construction(snap-together) minimizes the generation of dust



Cable clamp & Dividing sheet
Fix and organize the tubings and cables inside the cable carrier

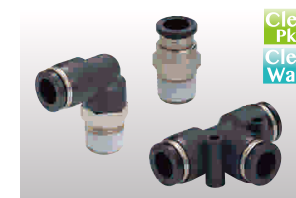
PISCO®



Offers a wide variety of products that assists you in achieving automation and **Labor-saving**



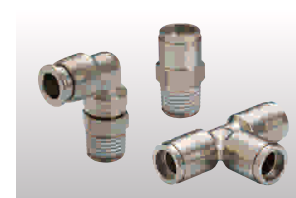
Fitting



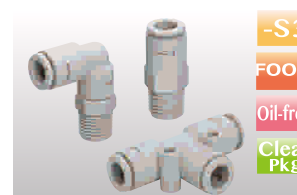
Push-in Fitting
Push-to-connect fittings that can be used for air as well as water piping



Minimal Fitting
Barb style types of fittings for piping in constrained spaces



Push-in Fitting Brass
Ideal for mold cooling piping and countermeasure for welding spatter



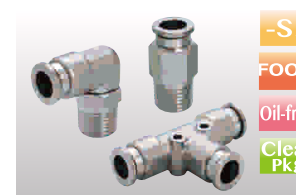
Fitting for Chemicals
All resin fitting made of PPS (Polyphenylene sulfide) has excellent chemical resistance



Polypropylene Fitting PP/SUS304
PP Fitting with SUS303 equivalent corrosivity. Polypropylene resin is used to adapt to clean environment



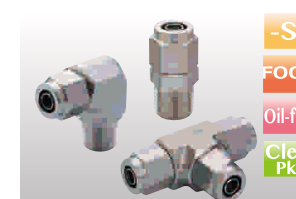
Stainless Steel Fitting SUS304
Tube fitting stainless SUS303 like corrosivity. Serves best in an corrosive environment or chemical atmosphere



Stainless Steel Fitting SUS316
Max. operating temp. 150°C. Ideal for Food, Chemical, Semiconductor industries



Compression Fitting Brass
Compression fitting made of brass is ideal for high temperature applications



Compression Fitting SUS316
2-part construction that requires no ferrule. No need to manage the turns of nut



Distribution Manifold
Ideal for air distribution being installed downstream from filter & regulator



High Rotary Joint
Suitable for high-speed swiveling and swinging applications



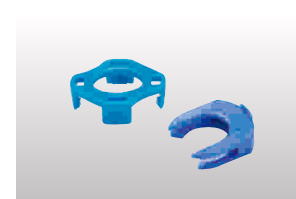
Rotary Union Manifold
Fit for rotating equipment applications such as rotary indexing tables



Multi-Connector
Realizes simultaneous connection and disconnection of two lines, and it is stackable



Light Coupling
Quick-disconnect type is suitable for factory floors where air lines are often replaced



Color Cap
Color-coded fitting makes it easy to identify the tubing to connect



IBK Engineers Pvt Ltd
B-219, 4th Cross, 1st Stage,
Peenya Industrial Estate,
Bangalore - 560 058. India
www.ibizkart.com

Cell : +91 - 98805 66644
Phone: +91 80 23726644
+91 80 23725544
raju.kn@ibizkart.com
www.piscopneumatic.com

<https://www.pisco.co.jp/en>



English

Meaning of sign

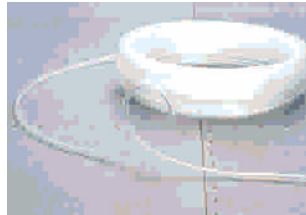
Clean Pkg	Clean-room packaging available	Clean Wash	Clean-wash spec. available	Oil-free	No grease	FOOD	Food Sanitation Act or FDA compliant
-S3	-S3 spec. (Standard) (※)	-S3	-S3 spec. (Optional) (※)	2in1	Product with two different functions combined into one	SAVING AIR	Air consumption can be reduced

※) "-S3 spec." means the products with limited use of copper-based materials for secondary battery and solar cell production lines. The sign of "-S3 spec.(Standard)" indicates the standard product that satisfies the "-S3 spec.". The sign of "-S3 spec.(optional)" indicates the product that has the "-S3 spec" option. See our website for further details of the specification

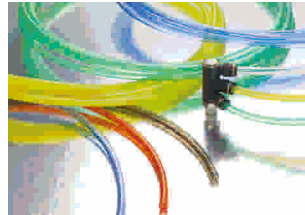
A glimpse at our products



Tubing



Tubing for Vacuum application
Ultra soft tubing suitable for using in piping for swinging part



Soft Polyurethane Tubing
Suitable for piping in constrained space



Polyurethane Tubing
Suitable for piping for limited space
Ultra small O.D. tubings are available



Polyolefin Tubing
Soft Polyolefin Tubing
Adopting a polyolefin type resin suitable for clean environment



Nylon Tubing
Soft Nylon Tubing
Excellent in pressure resistance and can withstand high pressure



Fluoropolymer (PFA) Tubing
Fluoropolymer (FEP) Tubing
Superior heat-proof and chemical-proof
Proven performance in die-casting industries



Anti-spatter Tubing
The outer cover is made of flame-retardant resin that protects the tubing from spark and heat



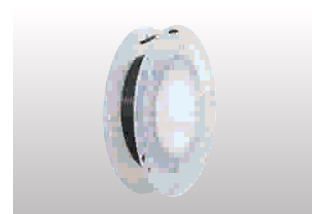
Multi-color Ribbon Tubing
Soft Ribbon Tubing
Cable ties are not required
Anti-rubbing between tubings



Spiral Coiled Tubing
Twin Spiral Coil Tubing
Suitable for air tools with its ease of handling
The number of coils can be customized

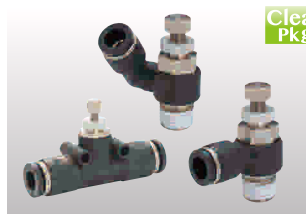


Tube Insert
Prevents tubing disengagement due to shrinkage when using with



Tubing Reel
Ease storage of tubings sustainably

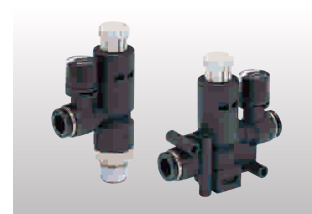
Control Valve & Air preparation



Speed Controller
Most popular flow control valve to control the operating speed of actuators



2-stage Speed Controller
Allows for dual speed control of double-acting cylinder with 3 needle knobs



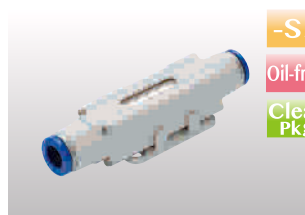
Pressure Regulator Push-lock type
Air-saving for small-sized cylinders is realized with individual pressure adjustment



Check Valve
Also ideal for vacuum retention and piping at low air pressure



In-line Air Filter
Filtering accuracy 5 μ m (Trapping efficiency: 95%)
Easy of filter replacement

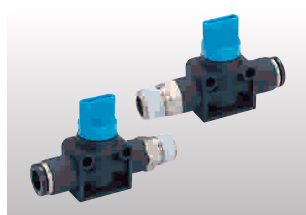


Hollow Fiber Membrane Filter
Filtering accuracy: 0.01 μ m (Trapping efficiency: 99.99%)
Best suitable for clean room environment



Air Reservoir
Reducing pressure fluctuation and pulsation of compressed air and vacuum

Shut-off Valve



Shut-off Valve
3-way valve that discharges the residual pressure
2-way valve is also available

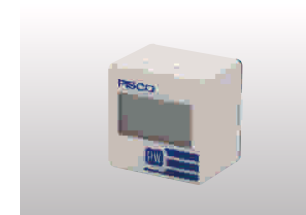


Shut-off Ball Valve
Can also be used with water



Ball Valve SUS316 Equivalent
Manual shut-off valve for chemicals, mixed gas and liquids

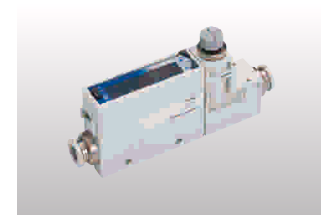
Pressure Gauge Indicator Switch & Sensor



Digital Pressure Gauge
Battery-operated digital pressure gauge



Digital Pressure Sensor 31-32 3-color Dual display
High visibility is realized with the large LED display



Flow Sensor 21 2-color dual digital display
Flow management and suction verification of small work-piece are possible

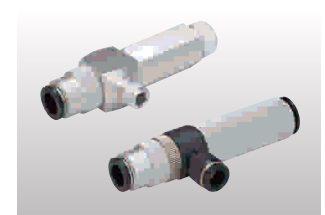
Vacuum Generator & Accessories



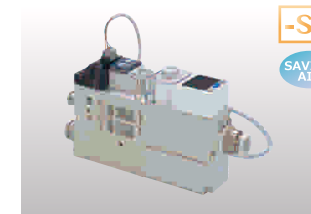
Vacuum Ejector V U-VUM-VB
In-Line type of vacuum ejector



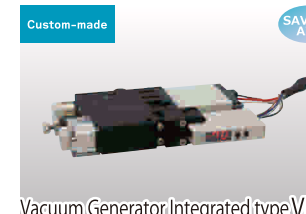
Vacuum Generator VLM
Stackable multi-stage ejector that secures high vacuum and high suction flow



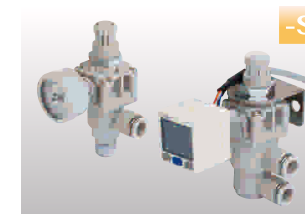
Vacuum Generator VRL
Suitable for conveying powder, particles, fibers and the like



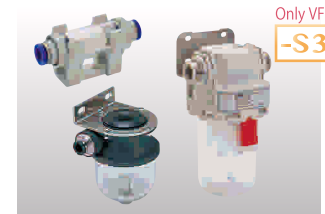
Vacuum Generator Integrated type VQ
Energy saving type that can reduce air consumption substantially



Vacuum Generator Integrated type VK
Energy saving pressure sensor mounted type
Energy saving type enables reduction of air consumption dramatically



Vacuum Regulator Push-lock type
Push-lock type knob enables easy adjustment



Vacuum Filter
Removes the dust and water drops sucked in by the vacuum generator or pump

Vacuum Suction Cups



Flat/Deep/Small type
A wide variety of vacuum cups with dia. from ϕ 0.7mm to ϕ 200 mm



Soft type
Soft Bellows type
For transporting molded products



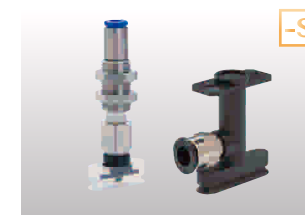
Bellows Cup Extra Soft type
Extra soft silicone cup for food industry
Food Sanitation Act & FDA compliant



Vacuum cup for Packaging bag
Extensive track record of being used in packaging industry



Foam sponge type
Recommended for conveyance of exterior walls and stone products



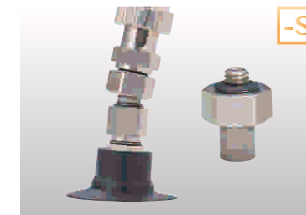
Oval type
Best suitable for transporting cylindrical objects such as round bars or syringes



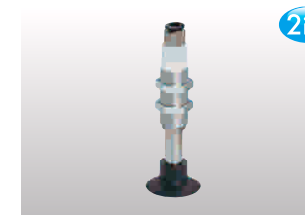
Vacuum cup with Push-Rod release
Work-piece is released smoothly by pushing an internal rod



Compact Vacuum Gripper
Accommodates 3 or 4 vacuum cups



Flexible Swing Joint
Internal spring resets the vacuum cup to the upright position



Vacuum Cylinder
Self-retracts right after absorption of work-piece



Vacuum Suction Pen
Air-driven type vacuum suction pen
Ideal for conveyance of small parts