

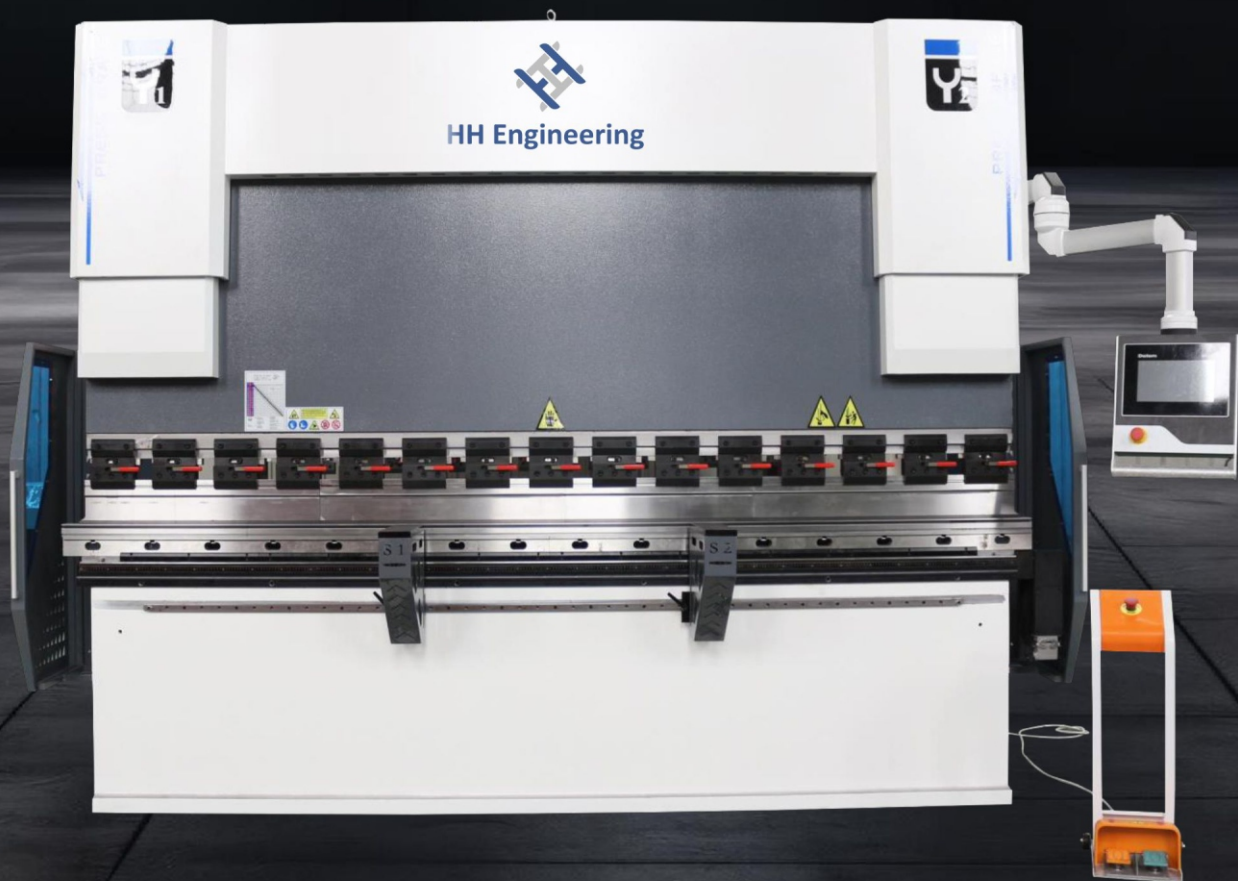
PRESSBRAKE

WE67K-100T3200

THE
ENGINEERING

SMART PRESSBRAKE WE67K-100T3200

Precision Redefined
Intelligently Å



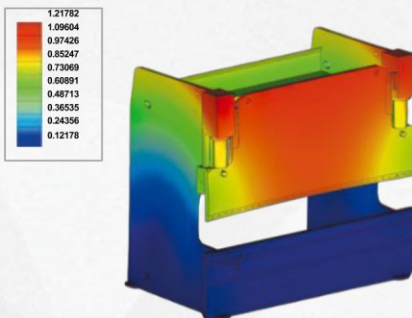
HIGH -PRECISION

STRESSRELIEF

HH ENGINEERING smart press brake features a rigid frame for minimum deflection under the load. Machine welding is made by welding apparatus & welding robots. After the welding, we make a stress relief process by high-temperature tempering or vibration system to improve the mechanical properties of materials, reduce deformation and rebound, improve the stability and durability of the workpiece, and machine frame sensitivity is protected for a long lifetime.

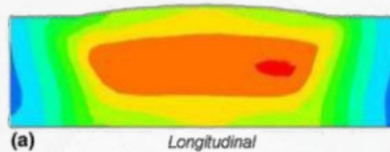
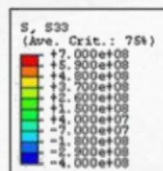
Frame Stress Relief

Stress von mises (N/mm²(MPa))

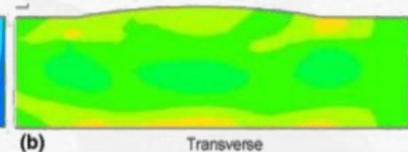
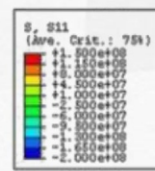


Weld Residual Stress Relief

Stress (Pa)



Stress (Pa)



MACHINING PROCESS

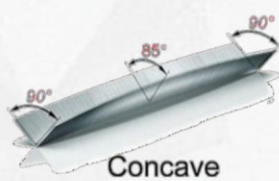
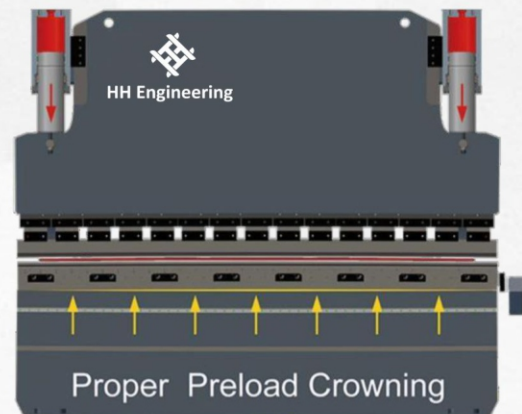
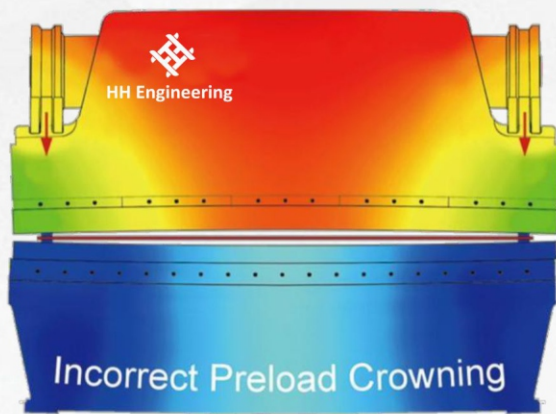
The machining process can handle large workpieces due to their overhead structure and extend range of movement. It can be automated and integrated with CNC (Computer Numerical Control) technology, enabling efficient and consistent production to perform a wide range of machining tasks, including milling, drilling, cutting, and trimming.



HIGH -PRECISION

CNC CROWNING

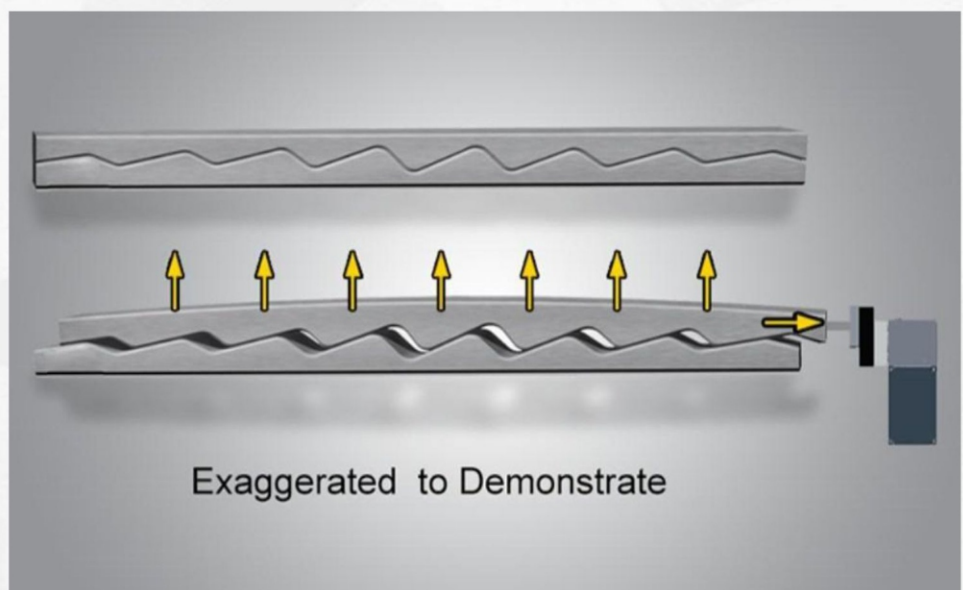
The CNC crowning system calculates the compensation value according to the overall deformation of the slider and the table surface. This allows the deformation curve of the bed to be seamlessly aligned with the compensation curve, ensuring the best straightness and angular consistency of our products.



Motorized Crowning



optional

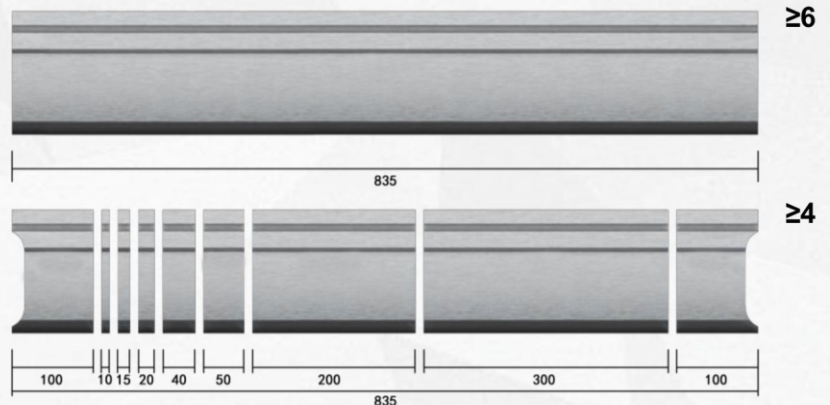
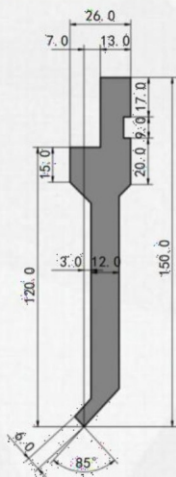


HIGH -PRECISION

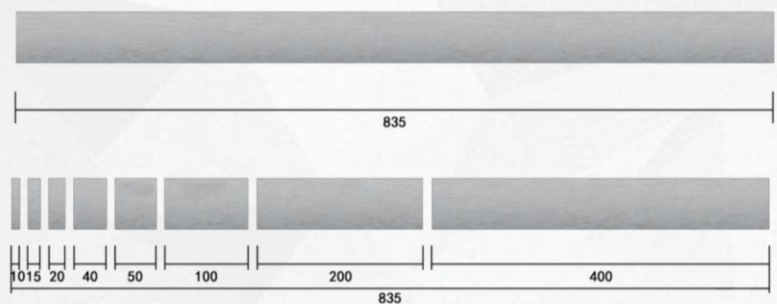
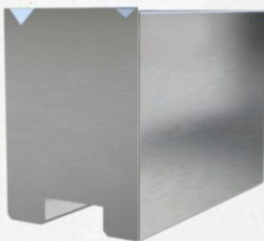
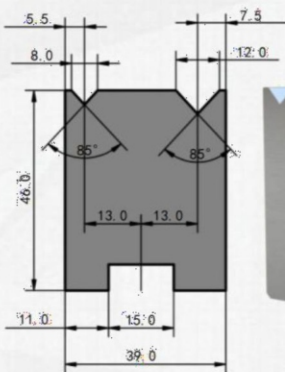
PUNCH AND DIE

HH ENGINEERING provides you with targeted tooling to improve production efficiency, machining accuracy and consistency meeting different bending needs. One set of the following punch and die will be given for free and other punches and dies will need to be purchased separately.

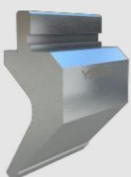
Sash Punch



Double V Die



For more punches and dies, please refer to the website link [link](#)



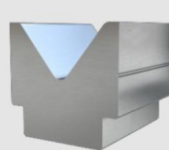
Gooseneck Punch



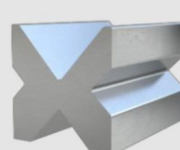
Standard Punch



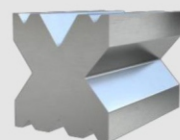
Arrow Punch



Single V Die



4V Die



Multi V Die



AUTOMATION

The application of automation technology in the bending process improves production efficiency, accuracy, and operational convenience, enhances the flexibility and responsiveness of production lines, brings efficient, accurate, and reliable production processes, and enhances the competitiveness and production efficiency of enterprises.





AUTOMATION

CONTROLLER SYSTEM

The DA-53T enables direct "hotkey" touch navigation between product programming and actual production. Machine adjustment and test bends are reduced to a minimum with a quick and easy program-to-production work sequence. USB interfacing enables fast product and tool backup using USB memory sticks.

The DA-58T offers 2D programming including automatic bend sequence calculation and collision detection. The production mode of the DA-58T helps the operator graphically simulate the bending process of the product, guiding him during the press brake operation. You are immediately ready to make the first part since all axes' positions are automatically computed and the bend sequence has been simulated with machine and tools on a real scale.

Compared with DA-53T, DA-58T enlarges the screen to 15" and adds functions such as drawing and 2D graphics programming. It also adds a network interface that can be directly connected to the network and a general selection of computer-aided bending workpieces more intelligent.

Model	DA-53T	DA-58T
Appearance		
Screen	4314áwrxfk screen	48áwrxfk screen
Resolution	1024 x 600 pixels, 32-bit color	1024 x 768 pixels, 32-bit color
Maximum Axis	4+1	4+1
Program Method	Digital+2D <input type="checkbox"/> optional <input type="checkbox"/>	Digital+2D
Network	/	Optional
Offline Software	Profile -53TL <input type="checkbox"/> activation code <input type="checkbox"/>	Profile -58TL <input type="checkbox"/> activation code <input type="checkbox"/>
Tool Library	30 punches / 30 dies	30 punches / 60 dies
Auto Bumping Calculation	y	y
Language	Brazilian, Chinese (Simplified), Chinese (Traditional), Czech, Danish, Dutch, English, Finnish, French, German, Greek, Hungarian, Italian, Japanese, Korean, Lithuanian, Polish, Portuguese, Romanian, Russian, Slovenian, Spanish, Swedish, Turkish	

AUTOMATION

OFFLINE SOFTWARE



Productivity



Resemblance



Compatibility



Networking

The Delem Profile -TL series offline software greatly improves the convenience of engineers and manufacturers when programming and bending processes. The software gives users the ability to program offline and operate on a computer without having to be connected to a physical machine. With this feature, users can fine-tune operations before actual production and spot potential problems in time.

Through virtual testing and optimization, the software can also significantly reduce the downtime of the press brake. Before importing the operating system, the user can fine-tune the production settings in the software environment, so that after completing the current bending task, a new bending task can be started immediately, no longer having to spend time setting up the bending program on the controller system screen of the press brake. This offline software can double production efficiency and bring significant benefit to the operation of the production line. You can get it for free at HH ENGINEERING

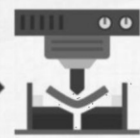
Delem Profile•T



OFFLINE SOFTWARE

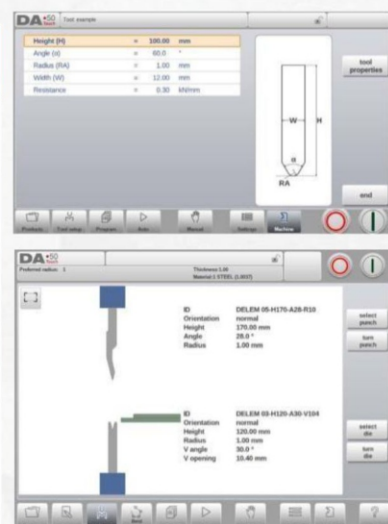


CONTROLLER SYSTEM



PRESS BRAKE

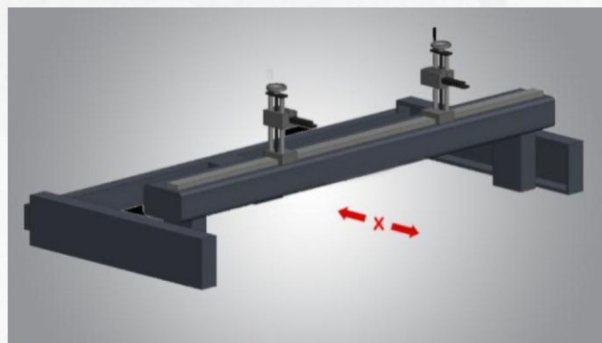
DELEM	DA-53T	DA-58T
Lite Version	Profile -53TL	Profile -58TL
Activation Method	Activation code	Activation code
Simulation	Digital display	2D
Bend Sequence Calculation	X	y
Expansion Calculation	X	y
Access	Free	Free



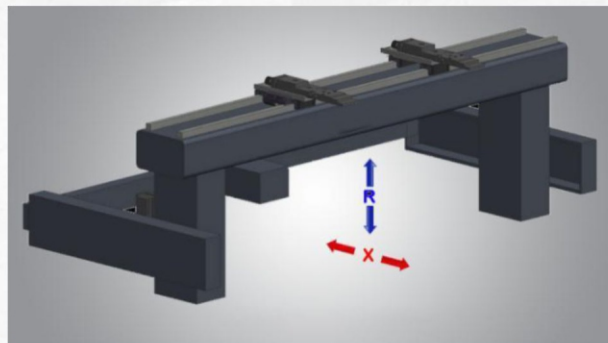
AUTOMATION

BACK-GAUGE SYSTEM

Y1	Left cylinder electro-hydraulic synchronous closed loop control axis
Y2	Right cylinder electro-hydraulic synchronous closed loop control axis
X	Back gauge moving axis (back and front)
R	Back gauge moving axis (up and down)
V	CNC crowning axis



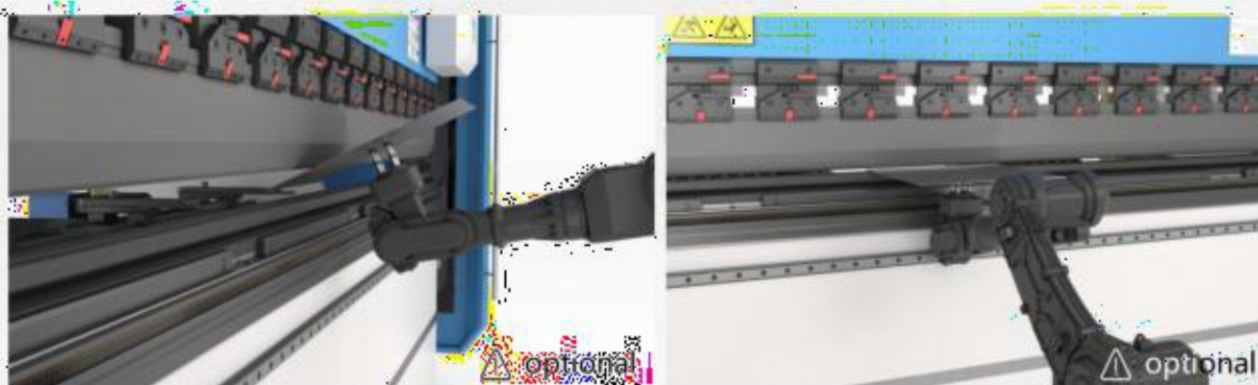
1-AXIS BACKGAUGE (X)



2-AXIS BACKGAUGE (X+R)

ROBOTIC ARM *

The robotic arm can automatically load, position, and unload bent parts, reduce manual operations, and optimizes the entire bending process, from sheet loading to finished part unloading, making it an efficient and reliable solution for modern sheet metal fabrication.



HIGH EFFICIENCY

PRIME Z1+ Z2 *

The Z1 and Z2 axes are programmed with the 7 inches Schneider touchscreen controller built into the foot switch to store 16 sets of Z1 and Z2 positions, and the user can enter the position data of the Z1 and Z2 axes in advance into a separate touchscreen controller according to different plate bending lengths.

Since the touchscreen controller can communicate with the controller system in real -time, the user can directly access the appropriate program in the touch screen controller when editing the bending machine programming, which can greatly improve the bending efficiency.



*optional



Energy Efficiency

This energy-saving feature leads to reduced power consumption and cost savings.



Enhanced Stability

This stability ensures consistent and accurate bends, reducing rework and improving productivity.



Flexibility & Ergonomics

This flexibility allows operators to support long or complex workpieces more effectively, reducing deflection and improving bending accuracy.



Space Optimization

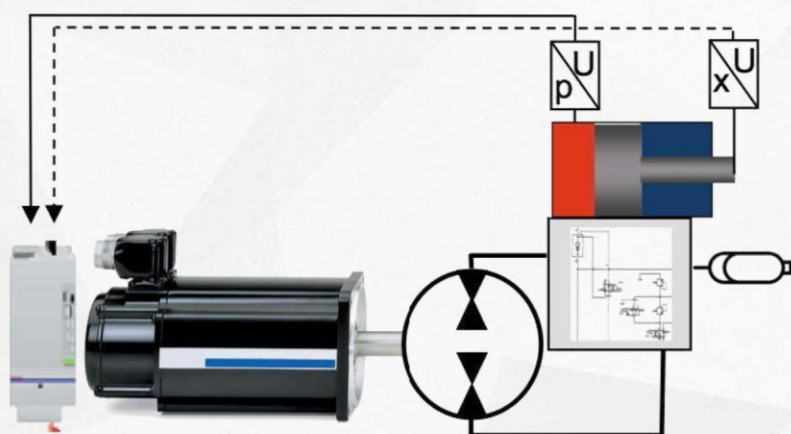
This maximization of storage capacity minimizes clutter, streamlines workflow, and promotes a clean and organized working environment.

HIGH EFFICIENCY

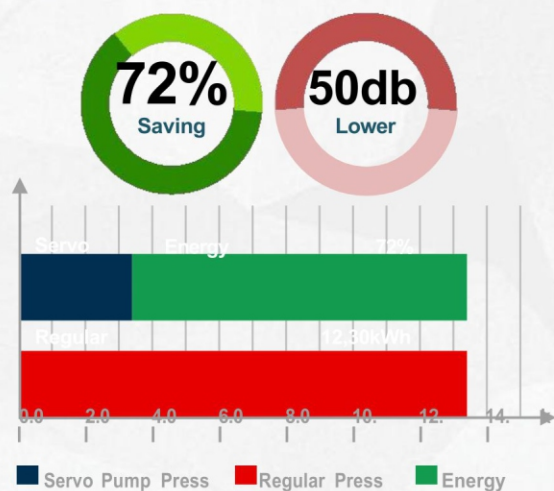
HIGH EFFICIENCY

SERVO PUMP UNIT *

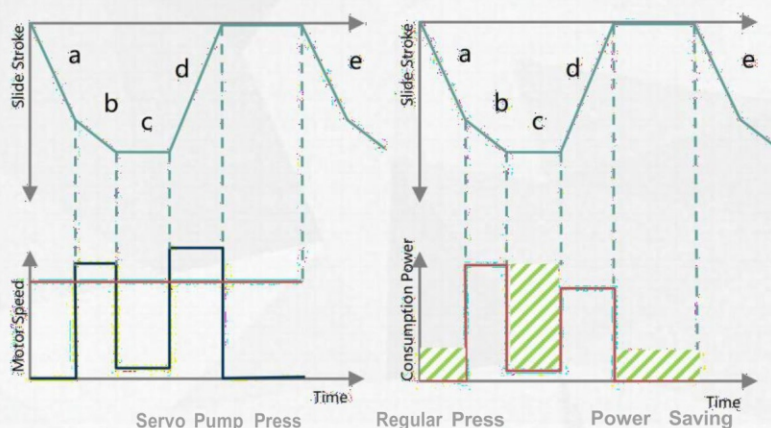
HH ENGINEERING smart press brake with servo pump-controlled motor has the advantages of high efficiency, accuracy and energy saving, which makes the machine tool better meet the processing requirements of the workpiece in the bending process, and improve the production efficiency and quality.



Electric Consumption



Energy & Speed



* optional

HIGH EFFICIENCY

CLAMP

The design and use of different clamps can replace the punches quickly and significantly improve bending accuracy. Through stable support, precise positioning and repeatability, and consistency, clamps can help reduce deformation and displacement, improve bending accuracy, and save time.



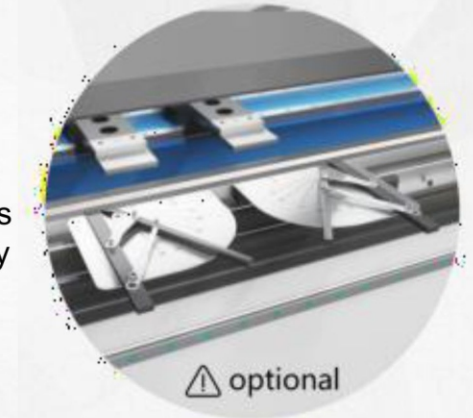
FRONT SUPPORT

By providing adjustability and versatility, the front support is suitable for workpieces of different shapes, sizes, and processing requirements, helping to locate and support workpieces to ensure their stability during the processing process and reducing errors or damage caused by workpiece deformation or movement.



SQUARING ARMS *

The Squaring Arm swiftly attaches to a flat surface die by using strong magnets, the product has a sturdy stainless steel table with a squaring arm that aligns metal pieces. It enables press brake operators to make precise angled corner bends quickly and safely, keeping hands clear of the press brake.



TOOLING CABINET *

HH ENGINEERING offers industrial grade bending machine tooling cabinets with good quality and large capacity. We can customize a variety of sizes according to customer needs, such as small cabinets.



* optional

SAFETY

BACKLIGHT CURTAIN

The back light curtain system will immediately send a signal to trigger the press brake to stop or slow down to avoid potential dangers by transmitting and receiving optical signals to monitor whether people are entering or approaching the rear area.



SAFETY DOOR SWITCH

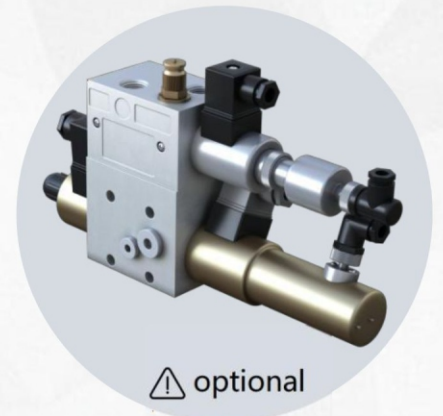
When the electrical cabinet door is opened, the power outage device will automatically cut off the power supply to the electrical system, preventing personnel from coming into contact with live components and circuits.




MONITOR VALVE *



The monitor valve monitor and control the pressure and flow rate of the hydraulic system. When the pressure exceeds the set range it will automatically trigger and maintain the pressure within the safe range by adjusting the flow rate or damping.



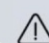
 optional

SAFETY PLC *



In the event of unexpected shutdowns, or abnormal conditions, the safety PLC will promptly restore the press brake system to a secure state to ensure the mitigation of potential dangers and accidents, safeguarding individuals, equipment, and the surrounding environment.



 optional

* optional

SAFETY

SAFETYGUARD SWITCH *

The safety guardswitch can detect the opening and closing state of the guardrail door. When the guardrail door is opened, the power off device will immediately cut off the power supply of the press brake to stop its operation, to guarantee the operators' safety.



LASERPROTECTION *

The MSD and DSP laser protection has detection area, if an opaque object interrupts the beam, the control system stop the device. Thus fully protects the personal safety of the operator to avoid the danger caused by the rapid movement of the press brake slider.



OIL COOLER *

Oil cooler employ cooling fans and cooler to effectively lower oil temperatures, to ensure the hydraulic system's stability and optimal operation by maintaining suitable operating conditions for its components.



ELECTRICAL CABINET AC *

Electrical cabinet air conditioner can ensure stable operation of equipment, extend equipment life, improve performance, avoid production interruptions and protect the environment.



* optional

CONFIGURATION

HH ENGINEERING always insists on selecting high-quality materials and high-performance configurations to ensure that our products are at a high level in terms of performance, durability and reliability.

1. System Controller	☐ DELEM
2. Main AC Motor	☐ SIEMENS
3. Electric Parts	☐ SCHNEIDER
4. Hydraulic Valve	☐ REXROTH
5. Hydraulic Pump	☐ REXROTH
6. Linear Encoder	☐ GIVI
7. Foot Switch	☐ KACON
8. Tubing Connector	☐ EMB
9. Ball Screw / Linear Guide	☐ HIWIN
10. Back gauge Servo Unit	☐ ESTUN
11. Seal Rings	☐ NOK
12. One Key Release Clamp	☐ HH ENGINEERING
13. Punch And Die	☐ HH ENGINEERING
14. Servo Pump Unit	* ESTUN
15. Safety PLC	* SCHNEIDER
16. Double -Slide Tool Clamp	* TYOKKO/AMADA
17. Hydraulic Tool Clamp	* WILA
18. Laser Protection	* DSP
19. Monitor Valve	* REXROTH
20. Robotic Arm	* ESTUN/ABB

● standard * optional

TECHNICAL PARAMETERS

HH ENGINEERING provides these parameters that can be used to compare the performance differences between different products, evaluate the applicability and performance of products, and allow users to make decisions based on specific needs.

No.	Item		Unit	100T3200
1.	Bending Force		kN	1000
2.	Bending Length		mm	3200
3.	Columns Distance		mm	2600
4.	Throat Depth		mm	350
5.	Ram Stroke		mm	200
6.	Daylight		mm	400
7.	Table Width		mm	100
8.	Oil Tank		L	220
9.	Front Support		pcs	2
10.	Main AC Motor		KW	7.5
11.	Pump Displacement		ml/r	16
12.	Hydraulic Pressure		MPa	28
13.	Dimension	Length	mm	3500
14.		Width	mm	1650
15.		Height	mm	2500
16.	Speed	Rapid Speed	mm/sec	200
17.		Working Speed	mm/sec	10
18.		Return Speed	mm/sec	160
19.	Back gauge	X-Axis Travel	mm	550
20.		R-Axis Travel	mm	160
21.		Positioning Accuracy	mm	0.05
22.		Stop Finger	pcs	4

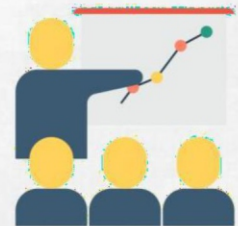
COMPREHENSIVE SERVICES

AFTER SALES SERVICE

The warranty period is 36 months after receiving the machine any quick-wear part is available for free during the guarantee period under proper operation customers only need to pay for the freight of the replaced new parts.



Installation and training services are optional for customers, any client can ask for this service from HH ENGINEERING and they should assume the airfare and accommodation for our engineer during the journey. The salary for each engineer is USD200 per day.



TERM OF PAYMENT

30% by T/T in advance, 70% by T/T before delivery.

LEAD TIME

60 days after receiving advance payment, sometimes we will have ready machines in stock.





SMART PRESS BRAKE WE67K-100T3200

HH ENGINEERING BENDING DIVISION

HH ENGINEERING
BENDING DIVISION

- 📍 Block No. 19-20, Ichhapore Busstop No. 2,
Adajan Hazira Main Road, Ichhapore, Surat - 394510.
- ✉️ hhengineering.2018@gmail.com
- 📞 Contact Now :
Purvish Pithava - Mo.: 98794 81908
- 🌐 www.hheng.in

Scan Our Product

