

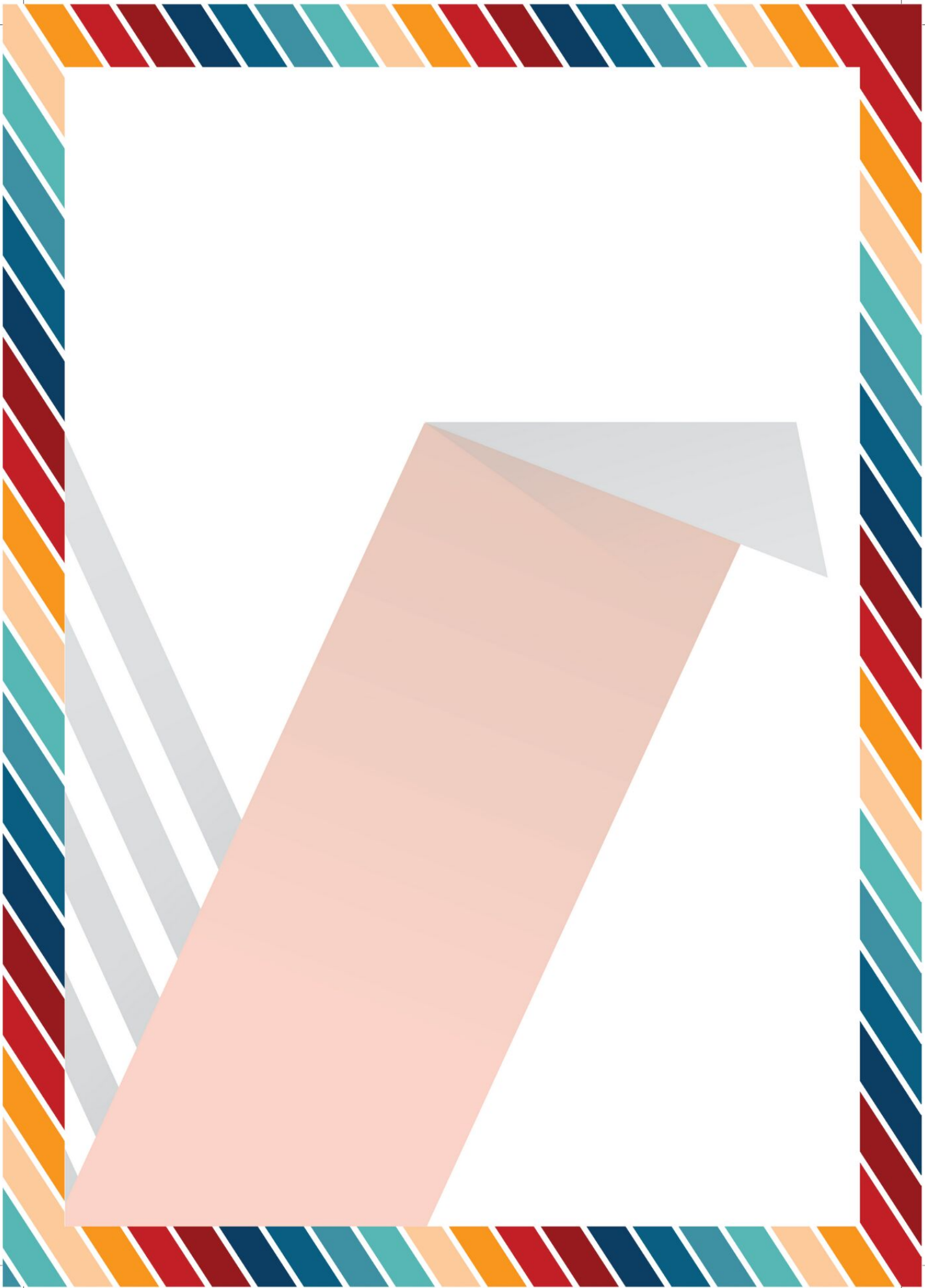
Canon

Delighting You Always



BE VICTORIOUS WITH
V SERIES







BE VICTORIOUS WITH **V SERIES**

Introducing **V Series**, cutting-edge colour digital production printers that offer an exceptional printing experience for businesses. This printer boasts five core features that set it apart from other models on the market: **Versatility, Viability, Volume Printing, Vibrant** Colors & production printing with a **Vision** to enhance business. With its **Versatile** capabilities, the **V Series** can handle a wide range of print jobs, from basic documents to high-quality marketing materials on specialty media including synthetic, textures as well as envelopes. It is also a **Viable** option for printing businesses that require efficient and cost-effective printing solutions. With its impressive High **Volume** printing capabilities, the **V Series** can churn out large quantities of prints quickly and it's easy on media switching of different paper g/m² (gsm), making it an ideal solution for busy print shops and in-house printing departments. The printer's exceptional quality ensures that your prints are sharp and detailed, while its **Vibrant Colors** add a pop of life to every page. **V Series** in a production print premise offers a **Visionary** long-term association to its users. It is not just a one-time acquisition, but rather an investment with a long-term partnership. Users can expect to benefit from service support, ensuring that their equipment continues to reap benefits for years to come. Overall, the **V Series** is an excellent choice for businesses that require high-quality, reliable, and efficient printing solutions.

So, it's time you take your business to next level in terms of performance & profitability and **Be Victorious with V Series!**

{ COLOR DIGITAL
PRODUCTION
PRINTER SERIES }



imagePRESS V1000 with MultiDrawer, POD XL, Bypass, Long Sheet Tray, DADF, Booklet Finisher-AF Series & LS Catch Tray



imagePRESS V900/V800/V700 with MultiDrawer, DADF & Booklet Finisher-AG Series

Viable

Production printing for increased productivity

The imagePRESS V900 Series is a true, light- to mid-volume production press that incorporates advanced technologies to help print establishments achieve amazing results—all in a small footprint. Incorporated into this color digital press is Canon's passion and unique understanding of imaging, photography, color science, and workflow. This expertise has resulted in a high-quality digital press that's both productive and versatile for printing establishments of varying shapes and sizes.

Outstanding Productivity

- Production speeds of up to 90 A4 pages/min
- Maintains rated speed on uncoated stocks up to 220g/m²
- 7 650-sheet feeding capacity with up to six different sources
- Wide array of productive Canon and third-party in-line accessories

Amazing Quality

- 2 400 x 2 400dpi print resolution utilizing the unique R-VCSEL imaging technology
- Intuitive calibration process that uses internal sensors to measure test patches
- Translucent CV Toner produces vibrant images on a wide variety of stocks
- Multi D.A.T. helps to achieve consistent color across long runs automatically

Brilliant Versatility

- Supports stocks up to 350g/m²
- Runs a variety of envelopes and long sheets up to 1 300mm
- Helps achieve highly accurate and consistent registration, even on large and heavy stocks



High Productivity
Across Your Run



Support for a Wide Range
of Specialty Stocks



Superb Colour
Repeatability



Tight Front-to-Back
Registration Alignment



imagePRESS
V900/V800/V700

Versatile & Vibrant

A multidimensional printer for greater value



Optimal Productivity

Reach impressive production speeds of up to 90 pages of A4 impressions per minute and allow your operators to tend to crucial tasks while the press auto duplexes heavy and thick stocks up to 350g/m² and long-sheet stocks up to 762mm in length.



Accurate Alignment with CRT (Compact Registration Technology)

A combination of digital sensors, together with registration rollers, helps to ensure that even heavy and large sheets are accurately and consistently positioned.



Detail Down to the Dot

Output crisp, colour images with remarkable clarity at high speeds with the imagePRESS C910 Series' state-of-the-art R-VCSEL laser technology at 2 400 x 2 400dpi and 190lpi



Checking Things Twice (Multi Exposure Technology)

Every dot is imaged twice, helping to produce accurate, superb quality across long runs and throughout the life of the drum.



Offset-like Print Quality

By allowing the surface properties of your media to show through Canon's translucent CV Toner, the press can produce amazingly vibrant and vivid images across the entire sheet surface on a wide variety of stocks.



A Vast Media Selection

Offers customers more with wide support of various types of medias, including envelopes uncoated, coated, thick & embossed, stocks and print on long sheets up to 1300mm.



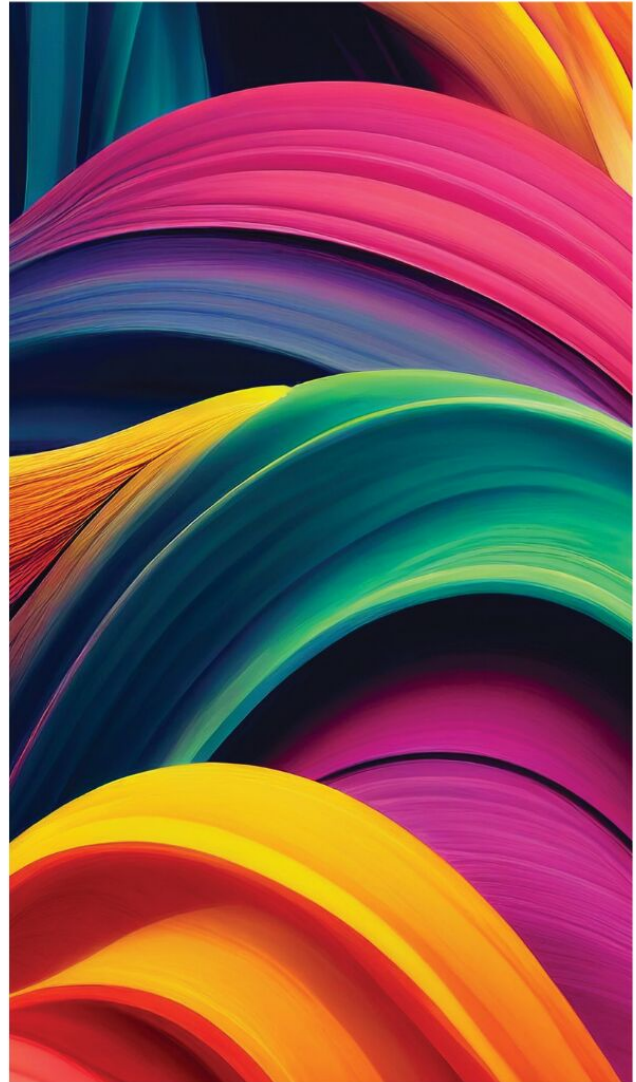
Ready for Smooth and Rough Surfaces

The combination of its flexible transfer belt (EITB) and Simple Transfer Adjustment technology allows toner to fill in the peaks and valleys of your textured and embossed stocks, producing high-density images for custom and premium applications.



Predictable Colors

Making sure that the imagePRESS V900 Series produces your expected results is as simple and fast by doing Printer Linearization & Density Calibration using Built-In Spectrophotometer. ACCT and Shading Correction makes color reproduction surer.



Consistent Colors

Maintaining a consistent environment and automatic measuring of multi-gradation density patches (MULTI DAT) combine to help ensure that your highlights, midtones, and shadows are reproduced to your high expectations.



Choice of iPR Printer Kit or Fiery P400

IPR V900 Series offers choice of imagePRESS Printer Kit featuring Adobe PostScript Print options or Fiery P400 Print Controller capable of managing Simple or Complex Job, Perform Color Management and makes Print Spooling & Processing more efficient.

Product Specifications

imagePRESS V900 / V800 / V700

GENERAL SPECIFICATIONS

	V900	V800	V700		
Print Speed	up to 90 A4 pages/min	up to 80 A4 pages/min	up to 70 A4 pages/min	Interface Type	USB 2.0 Hi-speed Ethernet: 1000 BaseT/100Base -TX/10Base-T Standard: 1 x USB Host
Recommended Monthly Volume	40 000 to 2 50 000 pages (A4)	30 000 to 2 20 000 pages (A4)	15 000 to 1 90 000 pages (A4)	Network Protocols	TCP/IP* (LPD/Port 9100/WSD/IPP/IPPS/SMB/FTP), IPX/SPX (NDS, Bindery), AppleTalk *IPv4/IPv6 support
Registration Tolerance	Front to Back: 0.8mm or less			Processor Speed	1.8GHz Dual Core
Printing Method	Colour Laser Beam Printing			Memory	6GB
Print Resolution	Up to 2 400dpi x 2 400dpi, 256 gradations			Hard Disk Drive	SSD 512GB
Paper Capacity	Standard : 3 x 550-sheet cassettes (80g/m ²) POD Deck Lite (A4/A3/SRA3) : 1 x 3 500 sheets side paper deck POD Deck Lite XL : 1 x 3 500 sheet side paper deck (A4/A3/SRA3), 1 x 1 000 sheets of length > 487.7mm Multi-drawer Deck-EI : Upper/ Middle : 2 x 1 500 sheets Lower Deck: 1 x 2 000 sheets (A4/A3/SRA3)			Control Panel for EFI, Canon PS/PCL	Operating Panel-A1 (25.6cm) WSVGA LED Backlight Colour Uplight Touchscreen
Max Paper Input Capacity	10 400 sheets (A4, 80g/m ²)			Dimensions (W x D x H)	1 327mm* x 872mm x 1 185mm** (W x D x H) * Includes optional Control Panel and Copy Tray-R2 ** Includes Upright Control Panel-G1 (If Operating Panel-A5 and Operator Attention Light-A1 are attached, total height is 1,632mm)
Max Paper Output Capacity	11 200 sheets (A4, 80g/m ²)			Minimum Installation Space (W x D)	1 952mm x 1 524mm (W x D)
Supported Media Types	Cassettes: Thin paper, Plain paper, Recycled paper, Colour paper, Heavy paper, Pre-punched paper, Bond, Letterhead, Tab paper* Transparency, Envelopes** Multi-purpose tray: Thin paper, Plain paper, Recycled paper, Colour paper, Heavy paper, Coated paper, Pre-punched paper, Tab paper, Bond, Transparency, Label, Envelopes, Letterhead Optional Paper Deck: Thin paper, Plain paper, Recycled paper, Colour paper, Heavy paper, Pre-punched paper, Coated paper, Textured, Bond, Transparency, Label, Letterhead, Tab paper, Envelopes** * Requires Tab feeding attachment ** Requires Envelope feeding attachment			Weight	Approx 284kg* *includes ADF
Supported Media Sizes	Paper cassette 1/2/3 Standard size: A3, A4, A4R, A5R, SRA3, 330 x 483mm (13 x 19inch) Free size: 100 x 148mm to 330.2 x 487.7mm Envelopes: No.10 (COM10), Monarch, DL, ISO-C5 Stack Bypass-C1 (Multi-purpose tray) Standard size: A3, A4, A4R, A5R, SRA3, 330 x 483mm (13 x 19inch) Free size: 100 x 148mm to 330.2 x 487.7mm Long sheet*: 210 x 487.8mm to 330.2 x 1 300mm Envelopes: No.10 (COM10), Monarch, DL, ISO-C5 *Requires Long Sheet Tray-B1 and Stack Bypass Alignment Tray-D1 POD Deck Lite-C1 Standard size: A3, A4, A4R, A5R, SRA3, 330 x 483mm (13 x 19inch) Free size: 139.7 x 148mm to 330.2 x 487.7mm Envelopes: No.10 (COM10), Monarch, DL, ISO-C5 POD Deck Lite XL-A1 Standard size: A3, A4, A4R, A5R, SRA3, 13 "x19 " (330 x 483mm) Free size: 139.7 x 148mm to 330.2 x 487.7mm Long sheet: 210 x 487.8mm to 330.2 x 762mm Envelopes: No.10 (COM10), Monarch, DL, ISO-C5 Multi-drawer Paper Deck-C1 Standard size: A3, A4, A4R, A5R, SRA3, 330 x 483mm (13 x 19inch) Free size: 139.7 x 182mm to 330.2 x 487.7mm Envelope: ISO-C5			Operating Environment	Temperature: 20 to 27°C (50 to 86°F) Humidity: 15 to 60% RH (no condensation)
				Power Source	220-240V (±10%), 50/60Hz (±2Hz), 16A x 2 *All Europe 220-240V (±10%), 50/60Hz (±2Hz), 13A x 2 *UK
				Power Consumption	Maximum: Approx 1,560W (at power supply) or less + 2,500W (at fusing unit) or less Plug In-Off mode: Approx. 1.0Wh Sleep mode: Approx. 1.5Wh or less Typical Electricity Consumption (TEC) rating: 10.7kWh (imagePRESS V900), 9.9kWh (imagePRESS V800), 8.9kWh (imagePRESS V700)
				Noise Levels	Sound Power level: Active: 77dB or less (imagePRESS V900), 76.3dB or less (imagePRESS V800), 75.5dB or less (imagePRESS V700) Standby: 58dB or less (imagePRESS V900/V800/V700)

SCAN SPECIFICATIONS

Name	Duplex Colour Image Reader Unit-P1
Type	Colour Platen and Single-pass Duplexing Automatic Document Feeder* [2-sided to 2-sided(Automatic)] * Detect Feeder Multi Sheet Feed is supported
Supported Media Sizes	A3S, A4L, A4S, A5L, A5S, A6S, B4S, B5L, B5S, B6S, 11"x17"S, LGLS, LTRL, LTRS, STMTL, STMTS, 8KS, 16KL
Supported Media Weights(BW/CL)	Single-sided scanning (BW/CL): 38 to 220g/m ² / 50 to 220g/m ² ; Double-sided scanning (BW/CL): 50 to 220g/m ² / 50 to 220g/m ²
Scan Resolution	Copy: 600dpi x 600dpi Send: 600dpi x 600dpi / 300dpi x 300dpi
Duplex Scanning	2-sided to 2-sided (Automatic)
Scan Speed	BW: 270 impressions/minute(A4/LTR) CL: 270 impressions/minute(A4/LTR)

Product Specifications

imagePRESS V900 / V800 / V700

INPUT ACCESSORY SPECIFICATIONS

POD Deck Lite-C1	Standard size: A3, A4, A4R, A5R, SRA3, 330 x 483mm (13 x 19inch) Free size: 139.7 x 148mm to 330.2 x 487.7mm Envelopes: No.10 (COM10), Monarch, DL, ISO-C5 Paper Weight: 52 to 350g/m ² Paper Capacity: 3 500 sheets (80g/m ²) / 4 000 sheets (64g/m ²) Dimensions (W x D x H): 717mm x 686mm x 574mm Weight: Approx. 76kg
POD Deck Lite XL-A1	Standard size: A3, A4, A4R, A5R, SRA3, 330 x 483mm (13 x 19inch) Free size: 139.7 x 148mm to 330.2 x 487.7mm Long sheet: 210 x 487.8mm to 330.2 x 762mm Envelopes: No.10 (COM10), Monarch, DL, ISO-C5 Paper Weight: (Up to 487.7mm length) 52 to 350g/m ² (Over 487.7mm up to 762mm length) 64 to 300g/m ² Paper Capacity: (Up to 487.7mm length) 3 500 sheets (80g/m ²) / 4 000 sheets (64g/m ²) (Over 487.7mm up to 762mm length) 1 000 sheets (80g/m ²) Dimensions (W x D x H): 1 105mm x 686mm x 574mm Weight: Approx. 113kg
Multi-Drawer Paper Deck-E1	Standard size: A3, A4, A4R, A5R, SRA3, 330 x 483mm (13 x 19inch) Free size: 139.7 x 182mm to 330.2 x 487.7mm Envelope: ISO-C5 Paper Capacity: Upper/ Middle : 2 x 1 500 sheets Lower Deck: 1 x 2 000 sheets, Total: 5 000 sheet (80g/m ²) Dimensions (W x D x H): 950mm x 797mm x 1 040mm Weight: Approx. 155kg
Stack Bypass-D1	Standard size: A3, A4, A4R, A5R, SRA3, 330 x 483mm (13 x 19inch) Free size: 100 x 148mm to 330.2 x 487.7mm Long sheet*: 210 x 487.8mm to 330.2 x 1 300mm Envelopes: No.10 (COM10), Monarch, DL, ISO-C5 *Requires Long Sheet Tray-B1 and Stack Bypass Alignment Tray-D1 Paper Weight: 52 to 350g/m ² Paper Capacity: 250 sheets (80 or 64g/m ²), 1 sheet (Long sheet) Dimensions* (W x D x H): 749mm x 528mm x 402mm *With the Stack Bypass Alignment Tray-D1 and the Long Sheet Tray-B1 Weight*: Approx. 9.5kg *With the Stack Bypass Alignment Tray-D1 and the Long Sheet Tray-B1

OUTPUT ACCESSORY SPECIFICATIONS

Staple Finisher -AG1	Upper Tray (A) Capacity: A4/A4R/A5R/A3/SRA3/330 x 483mm 1 000 sheets Long sheet (Over 487.7mm up to 762mm length) 100 sheets (52-79g/m ²) / 50 sheets (80-150g/m ²) / 25 sheets (151-300g/m ²) Lower Tray (B) Capacity: A4 4 000 sheets (52-80g/m ²) / 3 000 sheets (801-300 g/m ²), A4R 2 000 sheets (52-300g/m ²), A3 1 500 sheets (52-300g/m ²), SRA3 1 000 sheets (52-300g/m ²), Any size 200 sheets (301-350g/m ²) Paper Weight: 52 to 300g/m ² Staple Position: Corner, Double Staple Capacity: A4: 100 sheets, A3/A4R: 50 sheets Dimensions (W x D x H): 800mm x 792mm x 1 239mm (with Long Sheet Tray : 1136mm x 792mm x 1 239mm) Weight: Approx. 130kg Power: 220-240V, 50-60Hz, 8A
Booklet Finisher-AG1	Tray Capacity / Paper Weight / Staple Position / Staple Capacity: same as Staple Finisher-W1 PRO Booklet stitch paper size: A3, A4R, SRA3, 330 x 483mm Free size (210 x 279.4mm to 330.2 x 487.7mm) Booklet stitch paper weight: Body sheet 52-220g/m ² , Cover sheet 64-300g/m ² Booklet stitch staple capacity: 25 sheets (52-80g/m ² , include cover) Dimensions (W x D x H): 800mm x 792mm x 1 239mm (with Long Sheet Tray : 1136mm x 792mm x 1 239mm) Weight: Approx. 110kg Power: 220-240V, 50-60Hz, 8A
Puncher Unit-BT1/BU1	Requires either the Booklet Finisher-W1 Pro or Staple Finisher-W1 Pro Punch Hole type: BT1: 2 holes and 4 holes (FRN) selectable, BU1: 4 holes (Swe) Punch Paper Weight: 52-300g/m ² Punch Paper Size: 2 holes: A3, A4, A4R, Free size (182 x 182mm to 297 x 432.0mm excluding 203 x 257mm to 297 x 270mm) 4 holes: A3, A4, Free size (257 x 182mm to 297 x 432mm)

Copy Tray-R2

Paper Size: All available size on marking engine
Paper Weight: 52 to 300g/m²
Output Capacity: 250 sheets at simplex/duplex printing
Dimensions (W x D x H): 422mm x 382mm x 175mm
Weight: Approx. 1.2kg

High Capacity Stacker-H1

Paper Size: A3, A4, A4R, A5R, SRA3, 330 x 483mm
Free size (140 x 182mm to 330.2 x 1 300mm)
Paper Weight: 52 to 350g/m²
Output Capacity
Stack tray: 6 000 sheets (80g/m²) in two stacks of 3 000 sheets each
Top Tray: 200 sheets (80g/m², 140 x 182mm to 330.2 x 762 mm), 100 sheets (210 x 762.1mm to 330.2 x 1 300mm)
Dimensions (W x D x H): 899mm x 745mm x 1 040mm
Weight: Approx. 120kg
Power: 90-264V, 47-63Hz, 10A

Perfect Binder-F1

Booklet size: 203 x 138mm to 297 x 216mm
Booklet thickness: Up to 25mm
Cutting Range: Top/bottom: 6.5 to 39.5mm at each edge, fore edge: 6.5 to 49.5mm
Body pages:
Sizes: A4, SRA4, Free size (257 x 182mm to 320 x 228.6mm)
Paper weight and number of sheets:
Thin Paper (52-63g/m²): 30-200 sheets
Plain Paper (64-80g/m²): 10-200 sheets
Plain Paper (81-90g/m²): 10-150 sheets
Thick Paper (91-105g/m²): 10-150 sheets
Thick Paper (106-163g/m²): up to 10 sheets as insertion sheet or up to 25mm as thickness of bunch
Cover:
Number of Sheets: 1 sheet
Sizes: A3, SRA3, Free size (257 x 364mm to 330.2 x 487.7mm)
Paper weight: 90 to 300g/m²
Tray capacity: Approx. 127mm or total approx. 1,000 sheets of paper as a total
Dimensions : 922mm x 791mm x 1 300mm
Weight Approx. 308kg
Power: 220-240 V, 50/60 Hz, 3.0 A

Document Insertion Unit-R1

Number of trays: 2 trays
Paper size: A3, A4, A4R, SRA3, 330 x 483mm
Free size (182 x 182mm to 330.2 x 487.7mm)
Paper Weight: 52 to 300g/m²
Paper Capacity: 200 sheets x 2 trays (80g/m²)
Dimensions (W x D x H): 336mm (746mm including Tray) x 793mm x 1 407mm
Weight: Approx. 61kg
Power: 100-240V, 50/60Hz, 1.0A

Paper Folding Unit-K1

<Z-Fold> Paper Size: A3, A4R, Paper Weight: 52 to 105g/m², Output Capacity: same as Staple/Booklet Finisher-W1 PRO
<C-Fold> Paper Size: A4R, Paper Weight: 52 to 105g/m², Output Capacity: 40 sheets (81.4g/m²)
<Accordian Z-fold> Paper Size: A4R, Paper Weight: 52 to 105g/m², Output Capacity: 40 sheets (81.4g/m²)
<Double parallel> Paper Size: A4R, Paper Weight: 52 to 90g/m², Output Capacity: 25 sheets (81.4g/m²)
<Half fold> Paper Size: A4R, Paper Weight: 52 to 105g/m², Output Capacity: same as Staple/Booklet Finisher-W1 PRO
Dimensions (W x D x H): 336mm x 793mm x 1,190mm
Weight: Approx. 71kg

Booklet Trimmer-G1

Requires Booklet Finisher-W1 PRO
Trim Width: 2-28mm
Trim Thickness: Up to 50 sheets (include cover)
Paper Weight: 52 to 300g/m²
Chip tray capacity: Approx. 5,000 sheets (Trim width 20mm, A4, 80g/m²)
Dimensions (W x D x H): 2 095mm (including joint, conveyor and output tray) x 790mm x 1 040mm
Weight: Approx. 178kg (including conveyor and output tray)

Two-Knife Booklet Trimmer-B1

Requires Booklet Trimmer-F1
Trim Width: 2-15mm
Trim Thickness: Up to 50 sheets (include cover)
Paper Weight: 52 to 300g/m² (Trim 60 to 300g/m²)
Chip tray capacity: Approx. 1 500 sheets (Trim width 15mm, A4, 80g/m²)
Dimensions (W x D x H): 2 312mm (including Booklet Trimmer-F1) x 790mm x 1 040mm
Weight: Approx. 145kg
Power: 220-240V, 60Hz, 2.3A

Multi Function Professional Puncher-C1

<Punch> 75-300g/m² (Plain paper), 118-300g/m² (Coated paper)
<Crease> 157-300g/m² (Plain paper / Coated paper)
<Through> 75-350g/m² (Plain paper), 118-350g/m² (Coated paper)
Paper Size:
<Through> 100 x 148mm to 330.2 x 1,300mm
<Punch> SRA3, A3, SRA4, SRA4R, A4, A4R
<Crease> SRA3, A3, A4R, 330 x 483mm, 330 x 487mm

<p>Staple Finisher-AC2 (only compatible with V800 & V700)</p>	<p>Punch Tools: Plastic Comb 21-Hole, Twin Loop 23-Hole (Round/Square), Twin Loop 34-Hole (Round/Square), Color Coil 47-Hole, Velo Bind 12-Hole, Loose Leaf 4-Hole Punch, Loose Leaf 2-Hole Punch, Loose Leaf 4-Hole (Swedish), Crease</p> <p>Dimensions (W x D x H): 445mm x 795mm x 1 040mm Weight: Approx. 102kg Power: 230V, 50Hz, 1.9A</p> <p>Lower Tray (A) Capacity: A4/A5R 3,000 sheets (81g/m²), A4R/A3/SRA3/ 330 x 483mm 1 500 sheets (81g/m²), Long sheet* (Over 487.7mm up to 762mm length) 100 sheets (79g/m²) Long sheet* (Over 762mm length) 1 sheet All size of thin paper (52-59g/m²) 1 500 sheets Capacity for coated paper is half of that for plain paper *Long Sheet Tray is required</p> <p>Upper Tray (B) Capacity: A4/A5R 250 sheets (80g/m²), A4R/A3/SRA3/330 x 483mm 125 sheets (80g/m²) Mid Tray (C) Capacity: A4/A5R 250 sheets (80g/m²), A4R/A3/SRA3/ 330 x 483mm 125 sheets (80g/m²) Staple Position: Corner, Double Staple Capacity: <Non coated media, 52-90g/m²> A4: 65 sheets, A3/A4R: 40 sheets <Coated media> 2 sheets Dimensions (W x D x H): 527mm (Max 656") x 623mm x 1 099mm (Max 1195mm") *when the auxiliary tray is extended. Weight: Approx. 35kg</p>	<p>Booklet Finisher-AC2 (Only compatible with V800 & V700)</p> <p>Tray Capacity / Paper Weight / Staple Position / Staple Capacity: same as Staple Finisher-AC2 but if there are any sheets on the saddle tray, the capacity of Tray A becomes limited to 1 500 sheets Booklet stitch paper size: A3, A4R, Free size (195 x 270 mm to 304.8 x 457.2mm) Booklet stitch paper weight: Body sheet 52-220g/m², Cover sheet 52-256g/m² Booklet stitch staple capacity (including 1 cover sheet): Non coated media: 20 sheets (52-81.4g/m²), 10 sheets (82-105g/m²), 5 sheets (106-150g/m²), 4 sheets (151-209 g/m²), 3 sheets (210-220g/m²) Coated media: 5 sheets (85-150g/m²), 4 sheets (151-209g/m²), 3 sheets (210-220g/m²) Dimensions (W x D x H): 527mm (Max 565") x 623mm x 1 099mm (Max 1195mm") Weight: Approx. 58kg *Long Sheet Tray is required</p> <p>Finisher Jogger Kit-A1 Requires either Stapler or Booklet Finisher-AC2. Paper Weight: Non Sort 52-350g/m², Bunch Shift 52-256g/m² Paper Size: Non Sort A3/A4/A4R, Bunch Shift A3/A4/A4R</p> <p>2/4 Hole Puncher Unit-A1 Requires either Staple or Booklet Finisher-AC2. Punch Hole type: 2 holes and 4 holes (FRN) selectable Paper Weight: 52-256g/m² Paper Size: 2 holes: A3, A4, A4R 4 holes: A3, A4</p> <p>4 Hole Puncher Unit-A1 Requires either Staple or Booklet Finisher-AC1. Punch Hole type: 4 holes (SWE) Paper Weight: 52-256g/m² Paper Size: A3, A4, A4R</p>
--	--	--

Print Options

imagePRESS Printer Kit

Page Description Languages	Adobe PostScript/PCL 5/6 & UFR II
Resolution	1 200dpi x 1 200dpi, 600dpi x 600dpi
Memory	SSD 512GB
RAM	6GB
Processor	1.8GHz Dual Core

Fiery - Part of imagePRESS Printer Family - P400

Fiery Driven™ Engines

- Canon imagePRESS V900/800/700

Hardware and Platform

- Intel® Pentium® G5400 Processor
- 8GB RAM
- 500GB HDD
- Linux operating system
- Fiery Installer Builder
- Fiery FS500 software

File Format Support

- Adobe® PostScript® Levels 1, 2, 3
- Adobe PDF
- Enhanced PCL® 6/PCL 5
- MS Office document formats (doc/x xls/x, ppt/x, pub/x) via the Fiery driver or Fiery Hot Folders

Fiery Color and Imaging Technology

- 1- step color management
- Zero-touch Recalibration
- Fiery ColorWise® colour management technology
- Fiery Edge™ colour profiles
- Fiery Calibrator
- PANTONE® colour enabled
- Image smoothing
- Fiery Spot-On™
- Fiery Image Enhance Visual Editor (requires Fiery ColorRight Package)
- Auto trapping

Adobe Interpreter Support

- CPSI version 3020
- Adobe PDF Print Engine® 5.51 (optional)

Device Management and Analytics

- EFI™ IQ™: Dashboard, Insight, Notify, Go
- EFI ColorGuard™ (optional)
- EFI Manage (optional)

Performance

- SmartRIP
- Spool-RIP-print simultaneously
- Scan-RIP-print simultaneously

Productivity and Workflow

- Fiery Command WorkStation®
- Fiery Hot Folders and Virtual Printers
- Fiery JobExpert (optional)
- Fiery drivers for Windows and Mac®
- Fiery WebTools™
- Booklet Maker
- Direct mobile printing
- Fiery Go (Android® and iOS)
- Print-time estimation

Variable Data Printing

- Fiery FreeForm™ Create
- Supported file formats:
 - Fiery FreeForm Plus
 - PDF/VT-1 (Requires Fiery JobExpert and PDF Processing Kit)
- VDP record range printing
- Define record length
- Record and set level finishing support
- VDP raster preview

Integration

- Canon Uniflow compatible
- Fiery JDF v1.8 (Requires Fiery Automation package)
- EFI MIS and Web-to-Print integration ready

- Prepress workflow integration (Agfa® Apogee, Kodak® PRINERGY, Heidelberg® Prinect)

Optional Fiery Software and Hardware

- Fiery Automation Package1
 - Rush Print, Schedule Print, Print/Process Next, Fiery Preflight, Fiery JobFlow™ Base, Fiery JDF
- Fiery ColorRight Package1
 - Fiery Spot Pro, Fiery ImageViewer, Fiery Image Enhance Visual Editor, Fiery Postflight, Control Bar
- Fiery JobExpert and PDF Processing Kit:
 - Fiery JobExpert, Adobe PDF Print Engine, PDF/ VT-1 support
- Fiery Impose1
- Fiery Compose1
- Fiery JobMaster™ 1
- Fiery JobFlow1 (requires Fiery Automation Package)
- Fiery Color Profiler Suite2
- ES-3000 spectrophotometer
- Adobe® Acrobat® Pro 2020 Kit

Security

- Secure erase, Security Profiles, Security Audit Logs
- Port blocking, IP filtering, 802.1x authentication, IPsec encryption, HTTPS with TLS 1.3 support
- Enhanced certificates management. Fiery selfsigned certificates are recreated automatically
- Secure printing, PostScript security, USB security Closed architecture

- Digitally signed software updates

Networking/Connectivity

- TCP/IP, AppleTalk, Bonjour support, SNMP, Port 9100, IPP, FTP, SMB, WSD, point and print, print via email (PS/ PDF), IPv6 support EMI/EMC
- FCC and ICES (US & Canada)
- CE Mark (EU)
- UK CA (UK / Australia / New Zealand)

Safety

- CB Scheme by TÜV
- UL/CSA
- CE Mark
- UK CA
- CCC
- BSMI
- EAC

Power Supply and Consumption

- Auto-switching: 100-240VAC
- 50/60Hz, 3Amps @100VAC
- 1.5Amps @240VAC
- Maximum / typical power usage: 80W / 30W

Canon Compatibility

- Media librarian support
- Canon Uniflow compatible



Versatile

Revolutionary technology inside

Multi-Drawer Paper Deck*

The 5 000 page capacity* trays are equipped with air-assist and air-separation, and a designated supplemental purge tray is used when multiple sheets are detected during feeding.

Paper-Conditioner Technology

Prepares media for inline and offline finishing. Sheets are less likely to curl and stick together, helping to preserve image quality, limit jamming, and avoid reprints.

Precision Registration Technology

Multi-point checks allow highly accurate, front-to-back duplexed printing on sheets up to 52 and 400g/m² (gsm) cover.

Red VCSEL

Canon's advanced 32 beam Red VCSEL laser delivers 2 400 x 2 400dpi print resolution, outputting detailed colour images with outstanding definition at high speeds.

Multi-Exposure Technology

When creating images, the Red VCSEL laser writes every dot on the drum twice, which helps maintain high image quality consistently across long production runs.

Translucent CV Toner

Helps produce consistent, vivid, and crisp images on a wide range of media with a realistic, offset-like finish.

Dynamic Image-Transfer Technology

Variable secondary roller pressure optimizes the paper path, helping to improve both quality on heavyweight stocks and reliability of lightweight media.

POD-SURF (Surface Rapid Fusing) Technology

An innovative fuser permits printing at speeds of up to 100 A4 pages/minute and high productivity on mixed-media jobs.

Multi D.A.T.

Twenty (20) multi-gradation density patches are measured and corrected automatically during production, helping ensure consistent halftones.

ILS (Inline Spectrophotometers)

With the push of a button, these sensors allow advanced colour adjustments such as engine linearisation, media calibration, colour profile creation, and colour validation.

*Optional Accessory & Capacity based on 80g/m² (gsm)



imagePRESS V1000 with MultiDrawer, POD XL, Bypass, Long Sheet Tray, DADF, Booklet Finisher-AF Series & LS Catch Tray

E
M
I
D
V
O
L
U
M
E

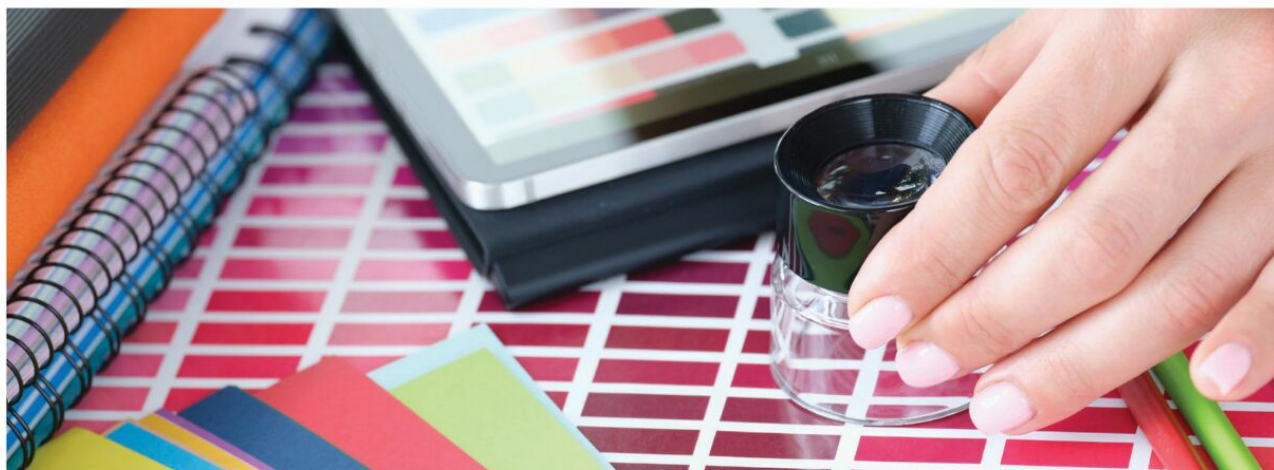
Volume Printing for greater profitability

Introducing the imagePRESS V1000 colour production digital press. Canon has taken the proven quality, productivity, and versatility of the imagePRESS brand and elevated it. With new, distinctive, vital technologies, the imagePRESS V1000 is designed to allow you to realize your vision more easily and efficiently than ever before.

Canon has synergized form and function so that even the most inexperienced operator can impress with superb colour and exquisite output! The innovative fusing system is designed to help environments realize high productivity in a small package while also helping to reduce turnaround time. And the streamlined paper conditioner helps keep work moving with fewer interruptions. The Dynamic Image-Transfer Technology helps create amazing output on a large range of stocks, and the Inline Spectrophotometers and Multi D.A.T. help deliver predictable and repeatable colour. Plus, the Precision Registration Technology helps produce highly accurate duplexed printing, even on long and heavy medias. Its fast, auto-duplex printing, as well as an embedded cooling unit reduces the frequency of temperature adjustment for each sheet & thus delivers high productivity for a variety of print jobs by sustaining the same speed on all media weights. Also, its extensive media-handling capabilities can produce a wide range of applications, including booklets, postcards, posters, and envelopes. Expand your revenue streams by printing media upto 400g/m² (gsm) weights, synthetic and textured media.

Amplify the profitability of your mid volume print environment.

Grab the opportunity to meet diverse customer demands with fresh thinking.



Vision

Expand your vision with V1000

In the ever-changing production marketplace, you need a partner with vision.

Introducing the imagePRESS V1000 colour production digital press. Canon has taken the proven quality, productivity, and versatility of the imagePRESS brand and elevated it. With new, distinctive, vital technologies, the imagePRESS V1000 is designed to help you realize your vision more easily and efficiently than ever before.

Canon has synergized form and function so that even the most inexperienced operator can impress with superb colour and exquisite output.

Innovative fusing system Designed to help environments realize high productivity in a small package while also helping to reduce turnaround time.

Streamlined paper conditioner helps keep work moving with fewer interruptions.

Dynamic Image-Transfer Technology helps create amazing output on a large range of stocks.

Inline Spectrophotometers and Multi D.A.T. help deliver predictable and repeatable colour.

Precision Registration Technology helps produce highly accurate duplexed printing, even on long and heavy medias.

Quality. Versatility. Productivity. The imagePRESS V1000 digital press gives you the tools you need to compete and thrive in the demanding print world.



imagePRESS V1000 with POD XL, DADF, EFI Fiery D3000, Booklet Finisher-AF Series & LS Catch Tray

Product Specifications

imagePRESS V1000

PRINT SPECIFICATIONS

Print speed (BW/CL)

100 A4 pages/min

Recommended Monthly Volume

75 000 - 6 00 000 pages

Maximum Monthly Peak Volume

Up to 6 00 000 pages

Registration Tolerance

Front to back: 0.70mm

Printing Method

Colour Laser Beam Printing

Print Resolution (dpi)

2 400 x 2 400

PAPER SUPPLY OPTIONS

Paper Supply Capacity (A4, 80gsm)

Standard: 1 100 sheets
550-sheet Paper Cassette x 2
Maximum: 11 100 sheets Engine 550x2,
Multi-drawer Deck (1 500+1 500+2 000) x2
POD Deck Lite: 3 500 sheets
POD Deck Lite XL: 487.7mm or shorter
3 500 sheets (80g/m²); Longer than 487.7mm
1 000 sheets (80g/m²);
Multi-purpose tray: 250 sheets

Supported Media Types

Paper Decks (1/2):
Thin (52-63g/m²), Plain (64-105g/m²), Thick (106-300g/m²), Recycled, Colour, Tab, Transparency, Bond, Pre-punched, Letterhead, Envelope

Multi-drawer Paper Deck:
Upper / Middle:
Thin (52-63g/m²), Plain (64-105g/m²), Recycled, Colour, Thick (106-350g/m²), Coated (70-350g/m²), Embossed, Bond, Transparency, Label, Pre Punched, Letterhead, Index, Bellum, Transparent film, Translucent film, Envelope*

Lower:
Thin (52-63g/m²), Plain (64-105g/m²), Recycled, Colour, Thick (106-400g/m²), Coated (70-400g/m²), Embossed, Bond, Transparency, Label, Pre Punched, Letterhead, Index, Transparent film, Translucent film, Envelope, Synthetic, Magnetic

POD Deck Lite
Thin (52-63g/m²), Plain (64-105g/m²), Recycled, Colour, Thick (106-400g/m²), Coated (85-350gsm), Embossed, Bellum, Bond, Transparency, Transparent film, Translucent film, Label, Pre Punched, Letterhead, Index, Postcard, Envelope, Synthetic

POD Deck Lite XL
19.2" or shorter
Thin (52-63g/m²), Plain (64-105g/m²), Recycled, Colour, Thick (106-400g/m²), Coated (85-350g/m²), Embossed, Bellum, Bond, Transparency, Transparent film, Translucent film, Label, Pre Punched, Letterhead, Index, Envelope, Synthetic
Longer than 487.7mm
Uncoated (64-300g/m²), Coated(100-300g/m²)

Multi-purpose tray:
Thin (52-63g/m²), Plain(64-105g/m²), Recycled, Thick (106-400g/m²), Colour, Transparency, Label, Postcard, Envelope, Coated(106-400g/m²), Embossed, Bond, Pre-punched, Letterhead, Vellum, Tab

Supported Media Sizes

Paper Decks (1/2):
A3S, B4S, A4L, A4S, B5S, B5L, A5S, A5L, A6S, SRA3S, 279 x 432mm S, LGLS, LTRL, LTRS, EXE, L, STMTS, 305 x 457mm S, 330 x 483mm S, 8KS, 16KL, 16KS, Envelope, Custom size (Cross track: 139.7-330.2mm, In track: 182-487.7mm)
*Envelope specification
Size: Monarch, ISO-C5, DL
Custom size : Cross track: 98-330.2mm, In track: 148mm-487.7mm

POD Deck Lite
SRA3S, A3S, A4L, A4S, A5S, B4S, B5L, B5S, 330 x 483mm S, 305 x 457mm S, 279 x 432mm, LGLS, LTRL, LTRS, EXECL, STMS, 8KS, 16KL, 16KS, Monarch, DL, ISO-C5, *1
Custom (139.7 x 182.0mm-330.2x487.7mm)
Envelope custom size(6"x9", 9"x12", 10"x13") *1
*1 Optional Envelope kit is needed (except 10"x13")

POD Deck Lite XL
SRA3S, A3S, A4L, A4S, A5S, B4S, B5L, B5S, 330 x 483mm S, 305 x 457mm S, 279 x 432mm, LGLS, LTRL, LTRS, EXECL, STMS, 8KS, 16KL, 16KS, Custom (139.7x182.0mm-330.2x487.7mm)
Long Sheet(297.0x487.8-330.2x762.0mm)

Multi-drawer Paper Deck:
Universal Cassette:
SRA3S, A3S, A4L, A4S, A5S, B4S, B5L, B5S, 330 x 483mm S, 12"x18"S, 279 x 432mm S, LGLS, LTRL, LTRS, EXECL, STMTS, 8KS, 16KL, 16KS

Monarch, DL, ISO-C5 *1
Custom (139.7x182.0mm-330.2x487.7mm)
Custom Envelope(152 x 229mm, 229 x 305mm, 254 x 330mm) *1. Optional Envelope kit is needed

Multi-purpose tray:
A3S, B4S, A4L, A4S, B5S, B5L, A5S, A5L, A6S, SRA3S, 279 x 432mm S, LGLS, LTRL, LTRS, EXE, L, STMTS, 305 x 457mm S, 330 x 483mm S, 8KS, 16KL, 16KS, Envelope, Custom size (Cross track: 100-330.2mm, In track: 148-487.7mm). Free size (Cross track: 100.0-330.2mm, In track: 182.0-487.7mm). *: 1300mm printing is possible.
*Envelope specification

Size:
Short-edge feed: Monarch, ISO-C5, DL
Custom size: Cross track: 98-330.2mm, In track: 148mm-487.7mm

Supported Media Weights

Paper Deck (1/2): 52 to 300g/m²
Multi-drawer Paper Deck: 52 to 400g/m² POD Deck Lite: 52 to 400g/m²
POD Deck Lite XL: 52-400g/m² Multi-purpose tray: 52 to 350g/m²

Machine Type

Core Functions

Processor

Control Panel

Memory

Hard Disk Drive

Mirroring Hard Disk Drive

Interface Connection

Power Supply

Dimensions Main Engine (W x D x H)

Weight

A3 Digital colour Press cut-sheet

Print, Copy, Scan, Send, Store

1.8GHz, 1.3GHz Dual

10.1 inch

6GB

SSD 240GB

Yes

NETWORK
Standard: 1000Base-T/100Base-TX/10Base-T

220-240V/16Ax2(Main Station),
220-240V/16A(Fusing Station)

1 583 x 872 x 1 040mm

Approx. 410kg

COPY SPECIFICATIONS

Copy Speed (BW/CL)

100ppm

First-Copy-Out Time (A4) (BW/CL) Weight Unit

20 seconds or less

Copy Resolution (dpi)

600dpi x 600dpi
600dpi x 300dpi
300dpi x 300dpi

Multiple Copies

Up to 9 999 copies

Copy Density

Automatic or Manual (9 Levels)

Magnification

25% - 400% (1% Increments)

Preset Reductions

25%, 50%, 70%

Preset Enlargements

141.4%, 200%, 400%

Basic Copy Features

Preset R/E Ratios by Area, Paper Setting, Previous Setting, Favourite Setting, Finishing, Two-Sided, Density Adjustment, Original Type Selection, Interrupt Mode, Setting Confirmation/Cancel

Special Copy Features

Book to Two Pages, Two-sided Original, Finishing, Booklet, Job Build, N on 1, Add Cover, Insert Sheets, Type Selection, Transparency Cover Sheets, Page Numbering, Copy Set Numbering, Sharpness, Erase Frame, Secure Watermark, Print Date, Shift, Gutter, Print & Check, Negative/Positive, Repeat Images, Merge Job Blocks, Job Done Notice, Mirror Image, Print on Tab, Store in Mail Box, Superimpose Image, Copy ID Card, Skip Blank Pages, Detect Feeder Multi Sheet Feed, Free Size Original

SCAN SPECIFICATIONS

Name Type

Duplex Colour Image Reader Unit-P1

Document Feeder Paper Capacity (80g/m²)

Colour Platen and Single-pass Duplexing Automatic Document Feeder [2-sided to 2-sided (Automatic)]

Acceptable Originals and Weights

200 sheets (75/80g/m²)

Sheet, Book, 3-Dimensional objects
Document Feeder media weight:
<Single sided>
38-220g/m² (A/B)(*1)(*2)(*3),
50-220g/m² (inch)(*1)(*3)
<Double sided>
38-220g/m² (A/B)(*1)(*2)(*3),
50-220g/m² (inch)(*1)(*3)

(*1) 38-50g/m²: Thin mode, 160-220g/m²: heavy mode.
(*2) A6R or less: 50-220g/m²
(*3) BW/CL mixed original same as Non mixed

Supported Media Sizes

Platen: max. scanning size: 297.0 x 431.8mm

Document Feeder media size:
A3S, A4L, A4S, A5L, A5S, A6S, B4S, B5L, B5S, B6S, 279 x 432mm S, LGLS, LTRL, LTRS, STMTL, STMTS, 8KS, 16KL

Scan Speed (ipm: BW/CL; A4)

BW: 270impressions/min(A4/LTR)(*1)
CL: 270impressions/min(A4/LTR)(*1)
(*1) Plain mode

Scan Resolution (dpi)

600dpi x 600dpi
600dpi x 300dpi
300dpi x 300dpi

CONSUMABLES

Toner Cartridges

Toner T11 BK/C/M/Y

Product Specifications

imagePRESS V1000

OUTPUT OPTIONS

Staple Finisher-AF1

Upper Tray (A) Capacity:
A4/A4R/A5R/A3/SRA3/330 x 483mm 1,000 sheets
(52-300g/m²) / 200 sheets (301-400g/m²)
Long sheet (Over 487.7mm up to 762mm length) 100
sheets (52-79g/m²) / 50 sheets (80-150g/m²) / 25 sheets
(151-300g/m²) / 20 sheets (301-350g/m²)
Lower Tray (B) Capacity:
A4 4 000 sheets (52-80g/m²) / 3 000 sheets
(80.1-300g/m²),
A4R 2 000 sheets (52-300g/m²),
A3 1 500 sheets (52-300g/m²),
SRA3 1 000 sheets (52-300g/m²),
Any size 200 sheets (301-350g/m²)
Paper Weight: 52 to 350g/m²
Staple Position: Corner, Double
Staple Capacity: A4: 100 sheets, A3/A4R: 50 sheets
Dimensions (W x D x H): 800mm x 792mm x 1 239mm
(with Long Sheet Tray : 1 136mm x 792mm x 1 239mm)
Weight: Approx. 130kg
Power: 220-240V, 50-60Hz, 8A

Booklet Finisher-AF1

Tray Capacity / Paper Weight / Staple Position / Staple
Capacity: same as Staple Finisher-AF1
Booklet stitch paper size: A3, A4R, SRA3, 330 x 483mm,
Free size (210 x 279.4mm to 330.2 x 487.7mm)
Booklet stitch paper weight: Body sheet 52-220g/m²,
Cover sheet 64-300g/m²
Booklet stitch staple capacity: 25 sheets (52-80g/m²,
include cover)
Dimensions (W x D x H): 800mm x 792mm x 1 239mm
(with Long Sheet Tray : 1 136mm x 792mm x 1 239mm)
Weight: Approx. 180kg
Power: 220-240V, 50-60Hz, 8A
Non Staple Folded Bunch Capacity: up to 5 sheets
(60 to 105g/m²)
Power Source: 100-240V, 50 / 60Hz, 2.8A
Dimensions (W x D x H): 896 x 765 x 1 040mm
(when the extension tray is extended)
Weight: Approx. 110kg

Puncher Unit-BT1/BU1

(Requires either the STAPLE FINISHER-AF1 or BOOKLET
FINISHER-AF1)
Two or Four Holes
Punch Hole type: BT1: 2 holes and 4 holes (FRN)
selectable,
BU1: 4 holes (SWE)
Punch Paper Weight: 52-300g/m²
Punch Paper Size: 2 holes: A3, A4, A4R,
Free size (182 x 182mm to 297 x 432.0mm
excluding 203 x 257mm to 297 x 270mm)
4 holes: A3, A4, Free size (257 x 182mm to 297 x 432mm)

FIERY PRINT CONTROLLER SPECIFICATIONS

Optional / Standard

Name

Print Resolution (dpi)

Page Description Language(s)

Memory

Hard Disk Storage

Processor Speed

System

Fonts

Supported Operating Systems

Interface

Network Protocols

Direct Print

VDP

Fiery Print Controller Standard Features

Fiery Print Controller Options

HW Platform

Dimensions (W x D x H)

Weight

Optional

imagePRESS Server D3000

1 200 x 1 200, 600 x 600

PS3, PCL6

16GB

240GB(SSD)

1x1TB(HDD)

Core i7-8700

Coffee lake

4.6GHz, 6Core

FS500 Pro

138 PS fonts

Windows 7 32 and 64 bit / Windows 8.1 32 and 64 bit /
Windows 10 32 and 64 bit / Windows 11 / Windows
Server 2008 R2 64 bit only / Windows 2012 64bit only /
Windows 2012 R2 64 bit only / Windows Server 2016 64
bit / Windows Server 2019 64 bit / Windows Server 2022
64 bit / MAC OS (10.14, 10.15, 11, 12)

2 x Ethernet
(1000Base-T/100Base-TX/10 Base-T),
USB3.2 x 5, USB2.0 x 2

TCP/IP (FTP, SMTP, POP, HTTP, SNMP, LDAP, SLP, SMB,
LPD, IPP, WS-Discovery, Bonjour, Direct Mobile Printing,
Port 9100, SNTP, 802.1X, DHCP, DNS, NTP)

PDF2.0, EPS, TIFF, JDF1.8/JMF

PPML3.0, PDF/VT-1, PDF/VT1.VPS, FreeForm Plus

Fiery Command WorkStation 6 / Paper Catalogue /
Fiery Spot-On / Fiery Remote Scan / Fiery Hot Folders
& Virtual Printers

Fiery Impose / Fiery Compose / Fiery Impose and
Compose / Fiery Graphic Arts Package / Removable
HDD Kit

NX Pro

235mm x 464mm x 527mm

17kg



OTHERS OPTIONAL ACCESSORIES:

- Multi Function Professional Puncher-C1
- Booklet Trimmer-G1
- Two-Knife Booklet Trimmer-B1 and Two-Knife Booklet Trimmer Conveyor-B1
- High-Capacity Stacker-J1
- Document Insertion Unit-R1
- Paper Folding Unit-K1
- Perfect Binder-F1
- DFD Adapter-B1
- Finisher Bridge-A2
- Staple Cartridge
 - STAPLE-N1 for Stapling (3 x 5 000 pcs) (for Staple Finisher- AF1 and Booklet Finisher-AF1)
 - STAPLE-P1 for Saddle Stitching (2 x 5 000 pcs) (for BookletFinisher-AF1)



Details about Canon India

Head Office:

Canon India Private Limited, 7th Floor, Tower-B,
Building No. 5, DLF Phase III, Gurgaon - 122002

 0124-486 1265 | 1860 180 3366 | 1800 208 3366

 <https://in.canon/ppp>

 cipl.ppp@canon.co.in

Canon Offices in India

DELHI/NCR

Canon India Private Limited
8th floor, Tower-B, Building No. 5,
DLF Epitome, DLF Phase - 3,
Gurgaon-122002
Tel - 0124 - 4529800 (Board)
Fax - 0124 - 4529811

HYDERABAD

Canon India Private Limited
The Belvedere, H.No.: 6-3-891/892,
2nd floor, RajBhawan Road,
Somajiguda,
Hyderabad-500082.
Tel - 040 - 39995800
Fax - 040 - 39995801

MUMBAI

Canon India Private Limited
4th Floor & 5th Floor, Natraj
by Rustomjee, 194, Junction
of Western Express Highway &
Andheri Kurla Road, Andheri East.
Mumbai 400069
Tel - 022-67145000

CHENNAI

Canon India Private Limited
"SKCL" Infinite Towers, 8th Floor
Plot No - A21 & A22, Thiru-Vi-Ka
Industrial Estate, Guindy,
Chennai - 600032,
Ph. No. 044-49080000

BANGALORE

Canon India Private Limited
3rd Floor, Salarpuria Windsor building,
No. 3, Ulsoor Road,
Bengaluru-560042
Tel: 080 - 40079400
Tel Fax: 080 -40079401

KOLKATA

Canon India Private Limited
3AR.O. 6th Floor, 4A,
Abanindranath Sarani
(Camac Street),
Kolkata 700017
Tel: 033 - 40110700
Fax: 033 40110731

PUNE

Canon India Private Limited
Office no. 404 & 405, Pride Kumar
Senate, Senapati Bapat Road
(Bhamburda), Shivaji Nagar,
Pune 411 016
Tel - 020 - 6680 9600
Fax - 020 - 66809602

imagePRESS V900/V800/V700



imagePRESS V1000



*Product images shown in this Brochure are for illustration purposes only. Certain functions are optional.
Please contact your Canon sales representative for further details & Clarity.



series



R.S MARKETING & LOGISTICS PVT LTD

Corporate & Head Office :- No, 1137, 11th Cross, WOC Road, Mahalakshmpuram Bangalore 560 086 Karnataka INDIA |
Telangana :- No. 5 - 9 - 22 / 84 Ground Floor, Near Birlamanadir, Adarsh Nagar Hyderabad - 500 063 Telangana INDIA |
Kerala :- No 65/2068 Ground Floor, Kattakarra Cross Road, Kaloore P.O Ernakulam 682 017 Kerala INDIA |
Tamil Nadu :- No 46/9 Ground Floor, Alagiri Nagar Main Road Vadapalini, Chennai- 600 026 | Tamil Nadu INDIA |
Tel :- + 91(0) 80-23190678- 080 23190679 | **Mob No.** +91 81360 60063
E-mail : support@rsmarketing.in | **Web :** www.rsmarketing.co.in | www.rsmarketing.in | www.rsml.in | www.rsml.live



Authorized Channel Partner's

