



BUILT FOR PERFORMANCE

- Industries We Serve Railway Industry (RDSO), PEB Industries, Heat Exchanger, Sugar Mill Industry, Heavy Fabrication
- Pan India Service & Support Network
- ISO Certified | Precision-Built Machinery
- Customize Engineering Solutions for Every Industry



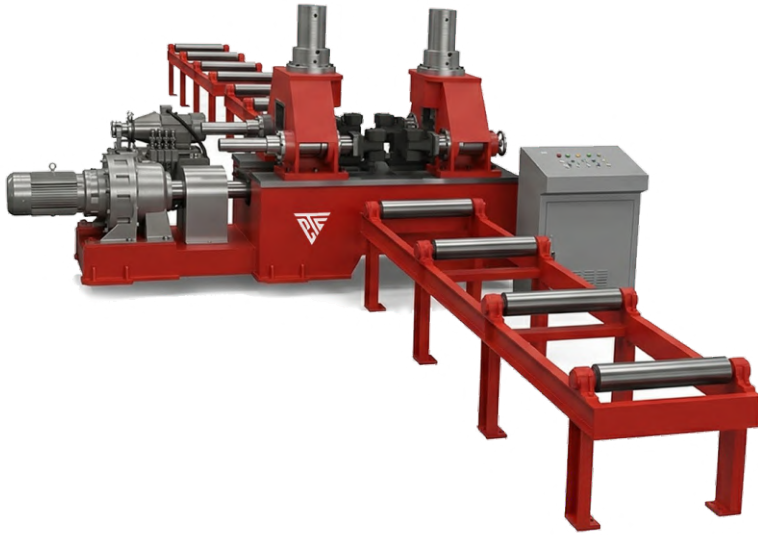
TECHNICAL SPECIFICATION

WORKING AREA	X = 1000 / 1500 mm Y = 2000 / 3000 mm Z = 300 mm
TRANSMISSION	X = Helical Rack / Ball Screw Y = Helical Rack / Ball Screw Z = Ball Screw
AXIS MOTOR	Servo
DRIVE SYSTEM	Planetary Gear Box
LINEAR GUIDE RAIL	45 / 55 mm LM Guide
SPINDLE TYPE	BT 40
SPINDLE RPM	6000 rpm
SPINDLE MOTOR	7.5/ 11 kW Servo Motor
MACHINE ACCURACY	50 to 80 micron
CNC CONTROLLER	PLC / HMI
WORKING COMMAND	G-CODE
LUBRICATION	Auto operated pump

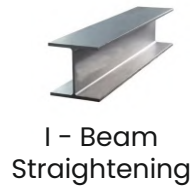
APPLICATION OF MACHINE



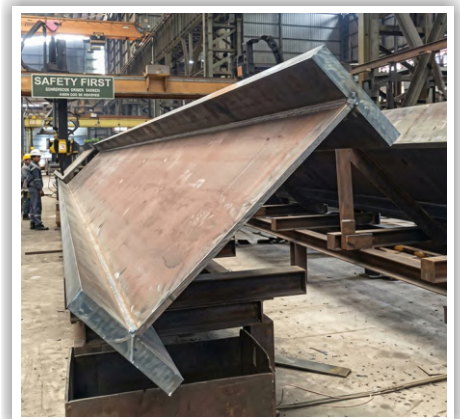
TECHNICAL SPECIFICATION

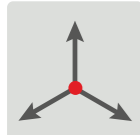


HEIGHT OF WEB	350 to 2000mm
THICKNESS OF WEB	16 to 30mm
HEIGHT OF FLANGE	400 to 1000mm
THICKNESS OF FLANGE	20 to 50mm
LENGTH OF BEAM	12000mm
STRAIGHTENING SPEED	Up to 6 mtrs / minute



APPLICATION OF MACHINE





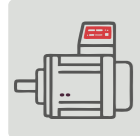
WORKING AREA

X = 1500 / 2000 / 3000 mm
 Y = 1500 / 2000 / 3000 mm
 Z = 300 mm (Job Placing Area)
 250 mm (Tool Working Area)



TRANSMISSION

X = Helical Rack / Ball Screw
 Y = Helical Rack / Ball Screw
 Z = Ball Screw



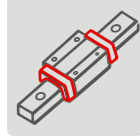
AXIS MOTOR

Servo



DRIVE SYSTEM

Planetary Gear Box



LINEAR GUIDE RAIL

45 / 55 mm LM Guide

SPINDLE TYPE

BT 40 / 50 CTS



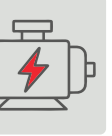
SPINDLE RPM

6000 rpm



SPINDLE MOTOR

9/11/15/18/22/26 kW



MACHINE ACCURACY

50 micron/m



CNC CONTROLLER

MITSUBISHI / Equivalent



WORKING COMMAND

G-CODE



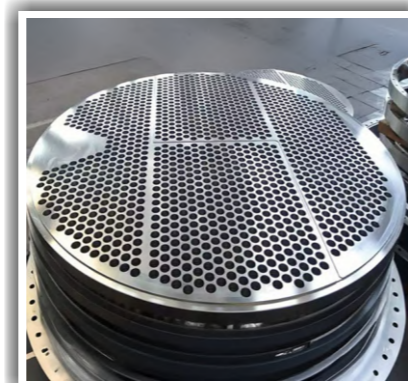
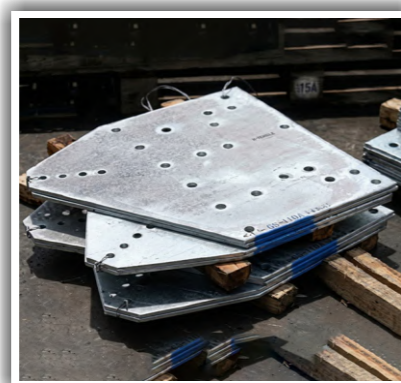
LUBRICATION

Auto operated pump

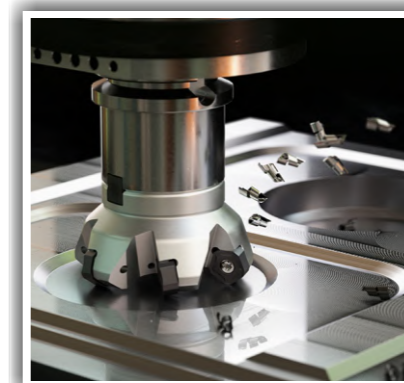


Note : Bed size customization as per your requirement

DRILLING APPLICATIONS

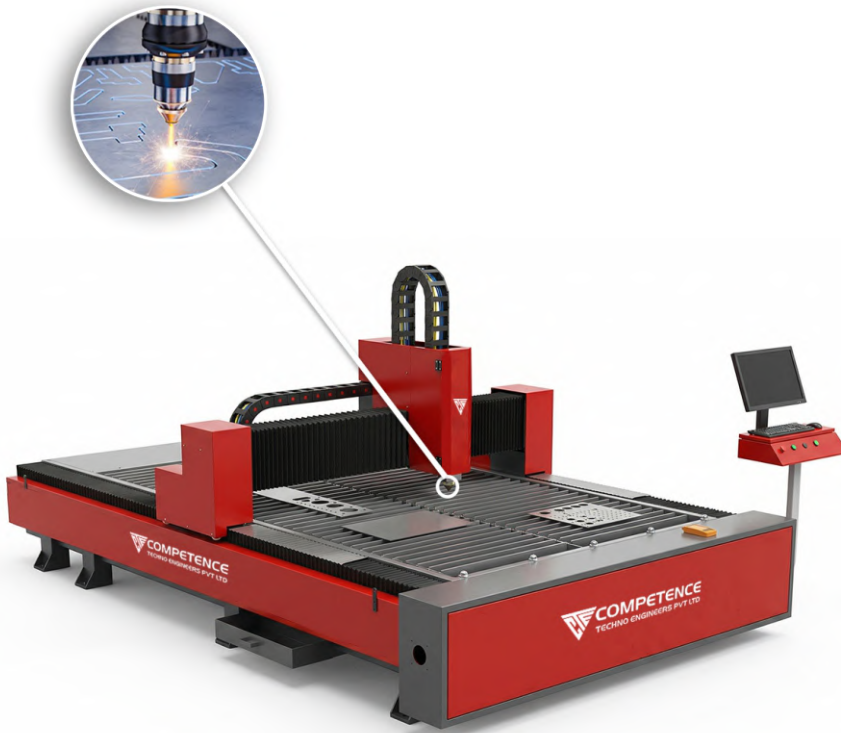


MILLING APPLICATIONS

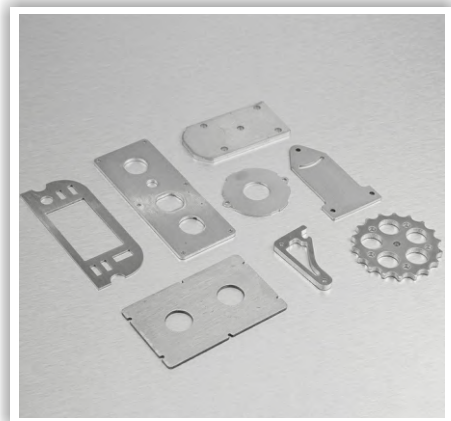


TECHNICAL SPECIFICATION

WORKING AREA	X = 1500 / 2000 mm Y = 3000 / 6000 mm
TRANSMISSION	X&Y Transmitted By Ground Helical Rack
AXIS MOTOR	Servo
DRIVE SYSTEM	Planetary Gear Box
LINEAR GUIDE RAIL	LM Guide
LASER POWER	1/1.5/2/3/6 KW Raycus/Max
LASER HEAD	Raytools / Bochu
MAX TRAVEL SPEED	60000 mm/min
MACHINE ACCURACY	20 micron / 1000 mm
CNC CONTROLLER	Cypcut 2000E
WORKING COMMAND	G-CODE
LUBRICATION	Auto operated pump



APPLICATION OF MACHINE





CNC PLASMA CUTTING



CNC OXY PROFILE



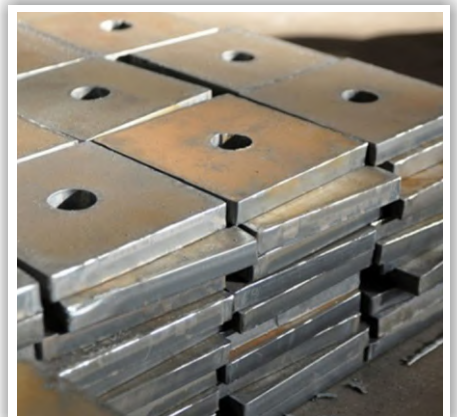
CNC STRIP CUTTING



TECHNICAL SPECIFICATION

WORKING AREA	X = 1.5/2/2.5/3 m Y = 3/6/12/14/25 m
TRANSMISSION	X&Y Transmitted By Helical Rack
AXIS MOTOR	Servo
DRIVE SYSTEM	Planetary Gear Box
LINEAR GUIDE RAIL	24 kg Steel Rail
PLASMA SOURCE	HYPER THERM or Equivalent
HEIGHT CONTROLLER	Yes
CUTTING STATION	As per requirement (Plasma/Gas/Strip)
CNC CONTROLLER	FLMC
WORKING COMMAND	G-CODE
LUBRICATION	Auto operated pump

APPLICATION OF MACHINE



INDUSTRIES WE SERVE



PEB STRUCTURE



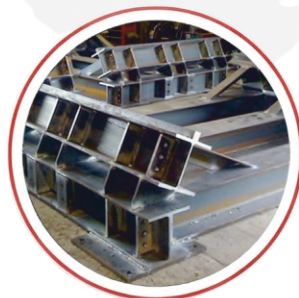
HEAT EXCHANGER



**RAILWAY INDUSTRY
(RDSO)**



**SUGAR MILL
INDUSTRY**



HEAVY FABRICATION



POWER TRANSMISSION



Address

187 Sarthi Industrial Park,
Kadodara, Surat - 394305 Gujarat



Phone

+91 9081888627



Email

sales@competencetechno.com



Website

competencetechno.com



Scan to
Visit Website



Watch Our
Machines