

FREEMOTION®

u22.ff UPRIGHT BIKE

MODEL # FMEX82420

22 /ERIE/ POWERED BY IFIT®

Exclusively on content-driven cardio machines from Freemotion, your members can explore the world through thousands of coach-led workouts, right from the cardio floor. Powered by iFit, the 22 SERIES keeps users engaged with vivid imagery, motivational coaching, and auto-adjusting technology that delivers an immersive and interactive cardio experience.

Offer your members the consistent, effective, and low-impact cardio solution found on the Freemotion Upright Bike, while allowing them to cycle the world, right from the cardio floor.



u22.P UPRIdHT BIKE

PRODUCT FEATURE/

CONSISTENT CYCLING SOLUTION

From the Quicklift™ Overmolded Seat to the Step Thru™ design, this bike is poised to be your go-to cardio solution.

THOUSANDS OF COACH-LED WORKOUTS

Give your members access to an expansive library of on-demand workouts led by expert fitness coaches from around the world. Users can search or sort by location, trainer, exercise type, workout duration, intensity, and more.

WORLD-RENOWNED FITNESS COACHES

With a hand-selected compilation of more than 100 Olympic champions, celebrity trainers, physical therapists, marathoners, expert cyclists and location guides leading workouts, your members will quickly discover their new favorite trainer.

GLOBAL WORKOUTS (40+ COUNTRIES, 7 CONTINENTS)

Empower members to explore the world without leaving the room with thousands of inspiring training videos beautifully filmed in stunning locations around the globe, including 40+ countries and all 7 continents.

HIGH-ENERGY STUDIO CLASSES

Expand your timetable and offer your members the hype of a participant-filled, high-intensity studio class, when it's most convenient for them.

GOOGLE MAPS™

Take a ride anywhere in the world with Google Maps, powered by iFit. Your members can map a route, and iFit will take them there.

AUTO-ADJUSTING TECHNOLOGY

Each interactive workout allows the on-screen coach to remotely adjust the resistance of the machine to mirror the on-screen content, creating an immersive and engaging training experience.

HIGH-DEFINITION DISPLAY

An immersive, high-definition 22-in (55 cm) capacitive touchscreen delivers stunning imagery that transports the user to exotic locations around the globe.

SPECIFICATION/

| | |
|---------------------------------|---|
| Display Type | 22 in (55 cm) HD Capacitive Touchscreen Built-in TV Tuner* (Available Soon) |
| Workouts | Thousands of Coach-Led, Unlimited with Google Maps |
| Featured Languages | EN, also DE, ES, FR, IT, PT, RU, ZH |
| Entertainment | HDMI, MPEG-2, MPEG-4 US & Canada: H.264 (AVC) International: H.265 (HEVC) |
| Electronic Readouts | Speed, Resistance, RPM, Distance, Calories, Time, Heart Rate, Watts & Pace |
| Audio Connections | Bluetooth, 3.5 mm headphone jack |
| Connectivity | Ethernet or Wifi minimum: 10 Mbps per unit (Dedicated Ethernet recommended) |
| Resistance System | SMR™ Silent Magnetic Resistance |
| Resistance Levels | 1-24 Levels |
| Heart Rate Monitoring | Dual-Grip EKG Pulse Sensors, ANT+ and Polar Compatible |
| Accessories Holder(s) | Phone/Accessories Tray, Bottle Holder |
| Transport Wheels | 2 in (5 cm) Plastic Wheels |
| Supported Power | 120 VAC, 2 Amp 240 VAC, 1 Amp |
| Maximum User Weight | 400 lbs (182 kg) |
| Product Weight | 176.4 lbs (80 kg) |
| Product Dimensions (L x W x H) | 53 x 24 x 58 in (134.6 x 60.9 x 147.3 cm) |
| Shipping Weight | 206 lbs (93.4 kg) |
| Shipping Dimensions (L x W x H) | 52 x 15.4 x 33 in (132 x 39 x 83.8 cm) |
| Certifications | CE, FCC/IC, BQB |

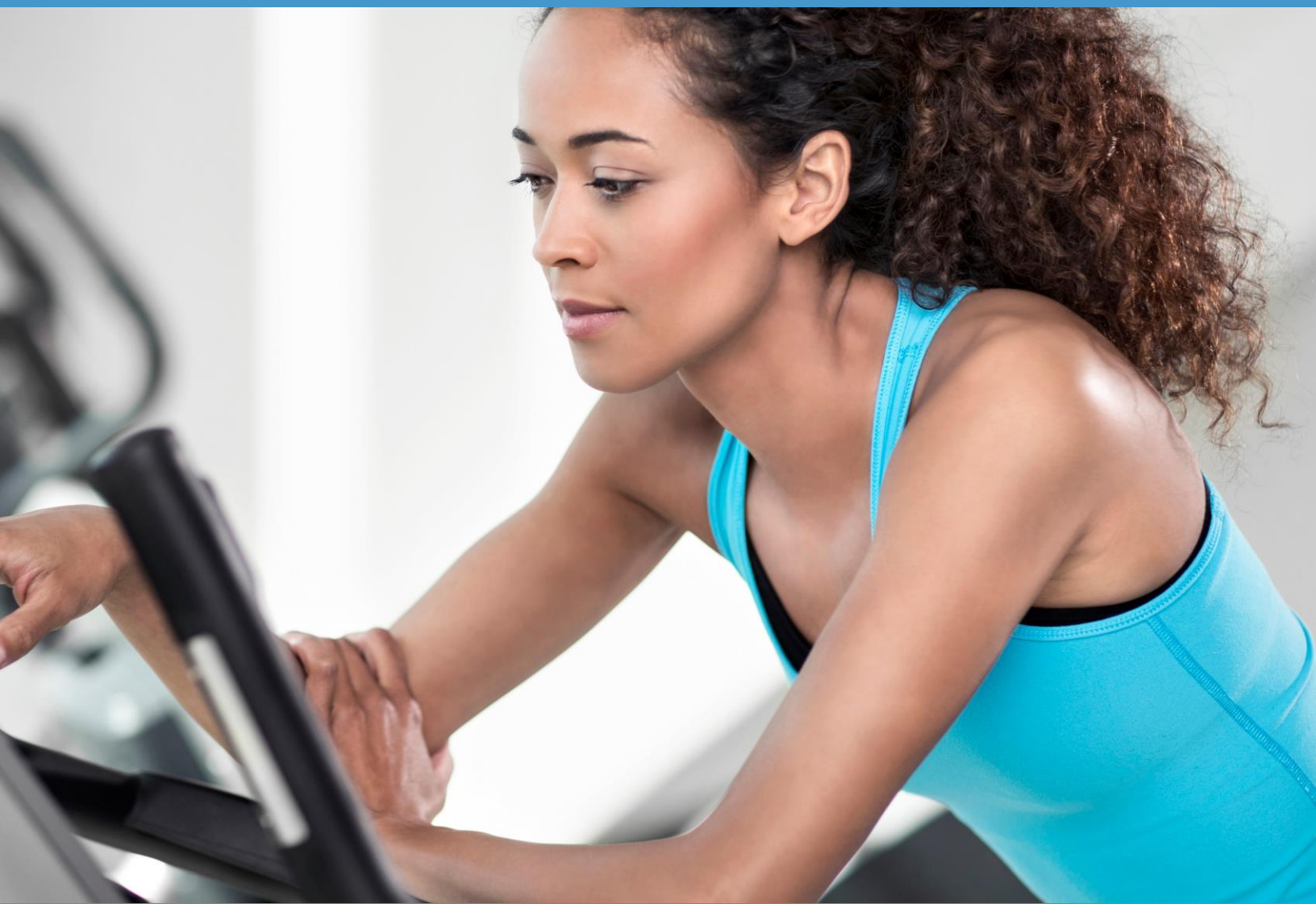
*NTSC, PAL, SECAM etc.

WARRANTIE/

| | | |
|---|------------------------|----------------------|
| CARDIO: HI4H-U/A4E - 22, 10, B Φ /ERIE/ | UI & CANADA | INTERNATIONAL |
| Frame (not including coatings), Drive Motor | 7 Years | 7 Years |
| Parts and Console | 2 Years | 2 Years |
| Labor | 1 Year | 1 Year |
| Cosmetic & Wear Items* | 6 Months | 6 Months |
| CARDIO: LOW-U/A4E - 22, 10, B Φ /ERIE/** | UI & CANADA | INTERNATIONAL |
| Frame (not including coatings), Drive Motor | 7 Years | 7 Years |
| Parts and Console | 3 Years | 3 Years |
| Labor | 3 Years | 1 Year |
| Cosmetic & Wear Items* | 6 Months | 6 Months |
| TV ATTACHMENT/ | UI & CANADA | INTERNATIONAL |
| MYE Digital LCD TV | 3 Years | 3 Years |
| MYE TV Controller & Wireless Receiver | 2 Years | 2 Years |
| MYE Wireless Transmitter | 5 Years | 5 Years |
| INDOOR BIKE/ | UI & CANADA | INTERNATIONAL |
| Frame (not including coatings) | 7 Years | 7 Years |
| Belt | 5 Years | 5 Years |
| Parts and Console | 2 Years | 2 Years |
| Labor | 1 Year | 1 Year |
| Cosmetic & Wear Items* | 6 Months | 6 Months |
| FU/ION | UI & CANADA | INTERNATIONAL |
| Frame (not including coatings) | 10 Years | 10 Years |
| Parts | 2 Years | 2 Years |
| Ropes and Labor | 1 Year | 1 Year |
| Cosmetic & Wear Items* | 6 Months | 6 Months |
| /TRENdTH/BENCHE//RId//RACK//ATTACHMENT/ | UI & CANADA | INTERNATIONAL |
| Frame (not including coatings) | 10 Years | 10 Years |
| Parts | 3 Years | 3 Years |
| Cables and Labor | 1 Year | 1 Year |
| Cosmetic & Wear Items* | 6 Months | 6 Months |
| Upholstery & Padding | 120 Days | 120 Days |
| FREE WEIdHT/ | UI & CANADA | INTERNATIONAL |
| Urethane-coated Weights (repair or replace at our discretion) | 3 Years | 3 Years |
| Rubber-coated Weights (repair or replace at our discretion) | 2 Years | 2 Years |

*Includes Non-warning Decals, Deck Rails, Pulse Grips, USB, Audio Jack, Handrails, Motor Hood, Fan Levers, Water Bottle Holders, Pedals, Pedal Straps, Seats, Handles/Levers/Knobs, Hand Grips, Removable Trays, Weight Pins, Springs, Belts (except Walking Belts), Accessories, Rust on Any Metal Components.

**For non-dues paying facilities with machine usage of 6 hours or less per day.



/SPECIFICATION REQUIREMENT/

POWER REQUIREMENT/

ALL Freemotion Bikes and Ellipticals can be powered by a standard 15 Amp circuit. A maximum of five (5) bikes and/or ellipticals may be safely run on a single circuit.

NETWORK CONNECTIVITY

Freemotion requires a minimum of Category 5e (Cat5e) twisted pair ethernet cable. Freemotion recommends Category 6 (Cat6) twisted pair ethernet cable to ensure stable and efficient connection.

Freemotion requires all switching devices to be capable of handling up to 10/100/1000 Mbps, and a dedicated network connection for each connected fitness product. All connected products, whether on WiFi or via Ethernet, should be on a secure and protected network capable of providing a minimum bandwidth of 10 Mbps per unit.