

EG SERIES

Oil-Injected Rotary Screw Air Compressors

The Technological Edge To Power Your Business

11 – 250 kW | 15 – 300 HP (50 | 60 Hz)
49-1540 cfm | 1.39 -43.6 m³/min
4.5-12.5 bar g | 100-175 psi g

NOW AVAILABLE WITH

DEMAND-MATCH

Saves Like VFD. Costs Like Fixed.

**EXPERIENCE ENERGY
SAVINGS UP TO 17%**



EG SERIES

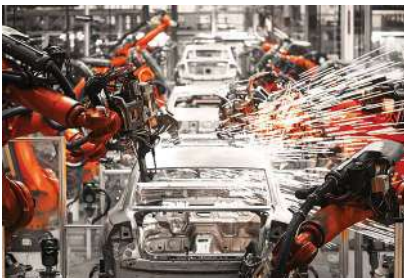
**Superior Energy Efficiency | Low Total Cost Of Ownership
Industry Leading Warranty | Best-In-Class Reliability**

Power consumption on your mind?

Around the world, changes are being made in the way businesses are powered, and in general, the way compressed air is used as a power in everyday life. These changes have implications for companies, governments, and individuals in the future.

Automotive, Chemical, Fast Moving Consumer Goods, Cement, Packaging, Textile, Ceramics industries and workshops rely heavily on compressed air. These industries fuel the world's economy.

Applications



Automotive



Cement



Packaging



Mining



Agriculture



Textile



Ceramic



Manufacturing

EG SERIES

THE ECO-FRIENDLY ENERGY-EFFICIENT COMPRESSOR



With high energy costs, revised regulatory and sustainability goals, and increasing competition, it is a continuous challenge for plant managers to reduce costs, achieve high productivity and improve energy efficiency.

For industries using air compressors for day-to-day operations, the energy cost has become a top concern. ELGi's screw compressors are engineered to be energy

efficient and environmentally friendly to minimise energy costs for customers. The airend's screw elements are manufactured in-house using state-of-the-art machining centres. ELGi is one of the few companies capable of design and manufacturing a wide range of oil lubricated and oil free airends.

ELGi's patent portfolio is a testament to the company's continuous research and innovation capabilities.

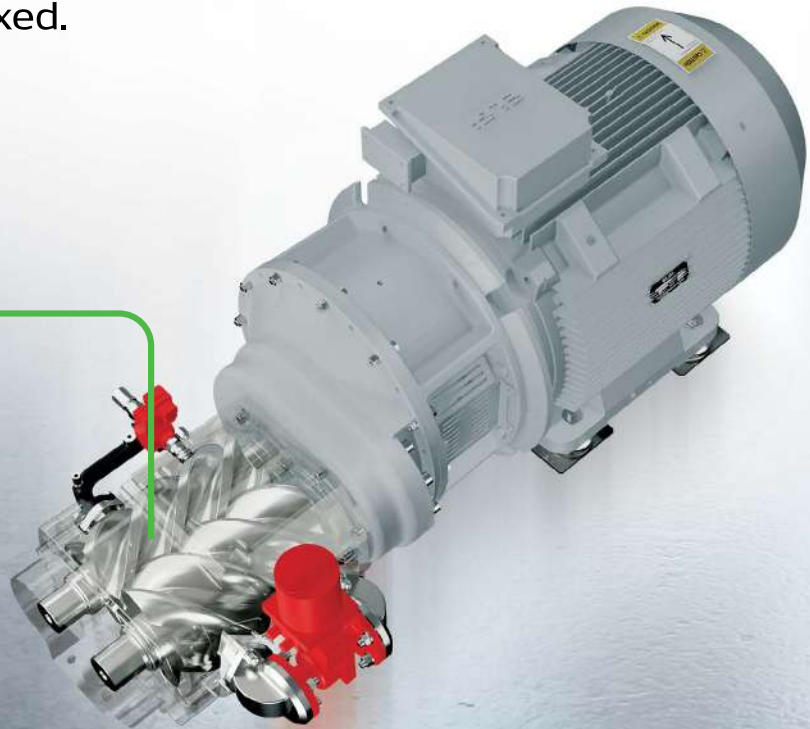
* All images are for representative purpose only. Actual product may vary.

DEMAND=MATCH SYSTEM

Saves like VFD. Costs like Fixed.



ENERGY SAVINGS
Up to 17%



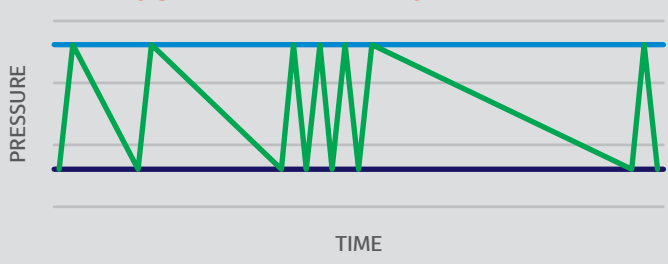
CURRENT INDUSTRY CHALLENGE

- >70% of compressors in use are fixed-speed machines, but in 100% of factories, demand is never constant.
- Demand fluctuates due to changes in production and process variability.
- Fixed-speed compressors, designed for constant output, struggle to operate effectively in these dynamic conditions.
- This results in excessive energy consumption, frequent cycling, and reduced system stability, no matter the brand or size.

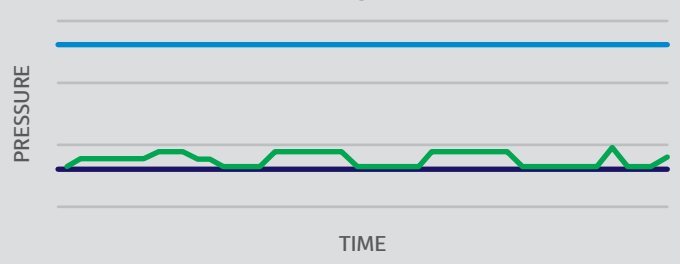
ELGi'S SOLUTION

- ELGi's Demand=Match technology is a breakthrough system that automatically adjusts compressor delivery to match plant demand.
- It works by smartly re-circulating airflow inside the compressor, ensuring delivery always equals demand.
- Energy saving, smoother operation and enhanced reliability – Exclusive to ELGi
- Right air at the right time – no shortage, no wastage

SYSTEM PRESSURE WITHOUT DEMAND=MATCH



SYSTEM PRESSURE WITH DEMAND=MATCH



— Cut-In Pressure — Cut-Out Pressure — System Pressure

DEMAND=MATCH
SYSTEM



QUICK COMPARISON

Fixed-Speed Compressors		With Demand=Match	
Runs at full capacity even when demand is low	▶ Excess energy use and higher operating costs	Adjusts delivery to match exact demand	▶ Significant energy savings and lower operating costs
Builds up higher-than-needed pressure and pressure spikes	▶ Additional energy wasted	Maintains stable nominal pressure	▶ Eliminates excess pressure losses
Frequent pressure cut-in/cut-out cycles, stress on components	▶ Reduced reliability	Stable Operation with no or minimal pressure cut-in/cut-out cycles	▶ Higher reliability and consistent performance

AS A CUSTOMER, EXPERIENCE



ENERGY SAVINGS
Up to 17%



SUSTAINABILITY
Reduced Carbon Footprint



VARIABLE FLOW
Handles 100 - 40% demand variation



AFFORDABILITY
Capital Light.

EG Series

**IMPROVED RELIABILITY ENABLES
EXTENDED AIREND WARRANTY**



Features and Benefits



Highly Efficient Airends Superior Energy Savings

ELGi's unique airends are equipped with in-house developed η -V profile rotors, with 4/5 lobe combination. The rotors are designed to run at low speeds to increase efficiency and life. The unique airend supplies compressed air for all demanding applications while ensuring minimal impact on the environment.

The 2 stage airends in the EG 75SP-160SP machines take the efficiency numbers to the next level and make them best-in-class.



Motors Reliable and Efficient

The motors with a larger core and increased windings provide better thermal management. Additional fins on the face of the motor with the lowest air block over the frame provide better reliability. The four/six pole motors offer better efficiency than other motors.

Available in IE4/IE5+ efficiency configurations for select models.



Advanced Package Design Functional and Aesthetic

The package is configured with subsystems that are designed to minimize system losses and maximize energy savings. The special design of the compressor and its door panels allows easy serviceability and the aesthetically built acoustic enclosure keeps noise levels in check.



Intake Valve System Reduced Starting Load

The new generation intake valve with an integrated blow-down unit, solenoid control, and actuator, is designed for high efficiency. Modulation unit* provides savings of upto 20% of total power consumption at 60% flow.

Load/unload System



Suction Modulation System



■ Actual Air Demand ■ Compressor Air Delivery

*Available for models from 55kW and above



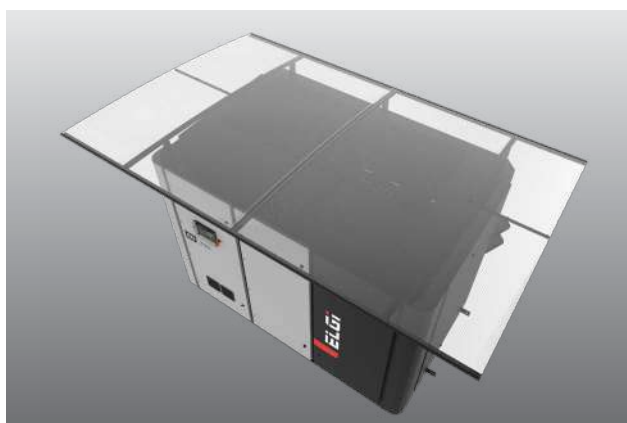
Low Oil Carry Over (< 1ppm) Superior Quality of Air

ELGi has developed a unique OSBIC process (Oil Separation by Impact and Centrifugal action) to separate air and oil with minimum pressure drop. This process involves removing oil from compressed air in three stages, delivering consistent low oil carryover. This efficient method also ensures the life of the air-oil separation filter.



Efficient Cooling System Extended Life and Cool Air

The cooling system with optimal fans and a large cooler surface area offers superior cooling performance. The integrated fan motor uses significantly low power and maintains an optimal temperature range of oil, thereby increasing the life of the parts. This smart cooling system keeps the discharged compressed air temperature low easing the load on the downstream equipment.



Reliability Under Extreme Conditions Robust and Reliable

The EG Series compressors are robust and reliable. They are designed to perform at extreme temperatures - from cold to hot and from dry to extremely humid conditions with design temperatures up to 50°C (115 degree F for Americas).

Optional outdoor protection* and low ambient models are available*

*For select regions



Custom-Designed Moisture Separator Longer Life of End-Use Equipment

The EG Series air compressor has a custom-designed centrifugal type moisture separator with an automatic drain that comes as a part of the package at no extra cost. The custom-designed separator removes over 99% of bulk water from the compressed air, resulting in a corrosion-free, longer life of end-use equipment and reducing the load on the dryer.



Safety and Protection

EG Series compressors are designed to ensure the highest level of safety.

High-pressure trip | Main motor trip | Pressure relief valve | Low voltage trip | Single phase preventer | Reverse rotation prevention | Fan motor overload trip.



Best-In-Class Warranty

Superior warranty designed to deliver long-term reliability and product assurance. For further warranty details, please contact your regional sales representative or authorized dealers.

T&C Apply.

EG Series

The Technological Edge to Power Your Business



- **Energy-Efficient**
Eco-Friendly Compressors
- **Highly Efficient Motor***
Energy Savings with IE4
Efficiency beyond regulation IE5+
- **Neuron 4 Controller**
Advanced, Intelligent Controller for Safety and Reliability
- **Optional Built-in VFD**
Compact and Saves Floor Area
- **Robust Cooling System**
Reduced Air outlet and Oil Temperature
- **Ease Of Maintenance**
Ease of Access to Components with Removable Panels
- **Silent and Aesthetic**
Enclosure Designed to Industrial Standards
- **Excellent Oil Separation OSBIC**
1 PPM Oil Carry Over
- **Safety Compliant Package**
CE Certified
- **Two-Stage Air Filtration**
Increased Life of Consumables

*In select Models

Neuron 4 Advanced Controller



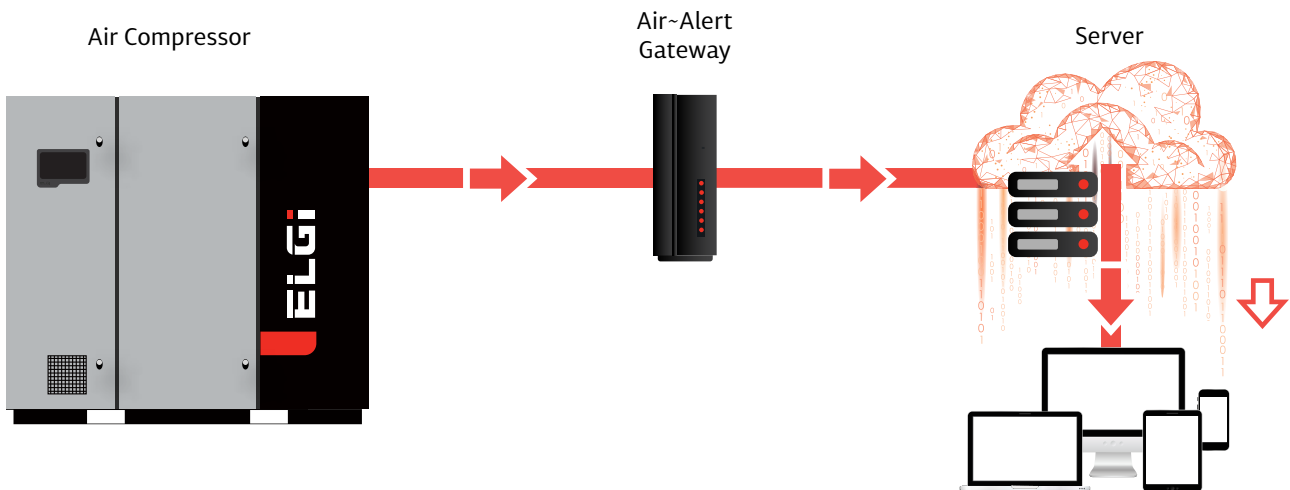
Ease of Use

Neuron 4 is everything that you will need for a superior and reliable compressor operation. The industrial - grade, 7” **touchscreen** user interface offers a seamless experience in setting the compressor operational parameters. The Neuron 4 with advanced processor and hardware enables:

- Sequencing^ of up to 8 compressors
- Pressure schedulers to optimize compressor performance
- An array of communication options and protocols with Ethernet#, RS485, Modbus TCP/IP#, Modbus RTU
- Industry 4.0 compatible with optional Air-Alert (IoT)
- Multi lingual with support up to 32 languages
- Mimic display
- Reverse rotation prevention

[#]Balancing of operating hours and narrow band cascading
[#]In select models only

Air~Alert is ELGi’s IoT solution



IMPROVED UPTIME

Air-Alert intelligently maintains the log of the compressors and notifies customers and service providers in advance for scheduled maintenance along with predicted and detected failure alerts.



IMPROVED ENERGY EFFICIENCY

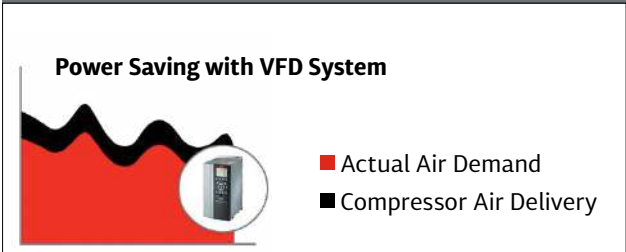
By monitoring the utilization helps save up to 30% on energy cost by optimizing pressure bands, identifying artificial demands, and resizing the compressor.



24/7 REMOTE MONITORING

Air-Alert delivers essential trend graphs and information on key operating parameters and alerts through a live online interface on a web portal, allowing remote access from anywhere in the world.

Variable Frequency Drive



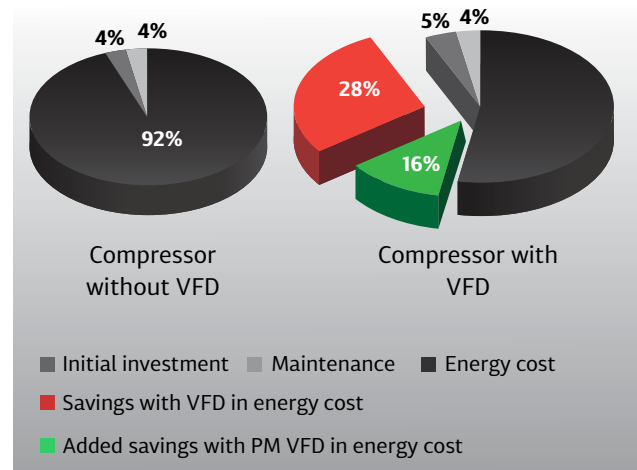
Save Energy

The In-built ELGi Variable Frequency Drives (VFD) matches the compressor output with the demand by varying motor speed which reduces the power consumption and subsequently results in savings.

The VFD helps in eliminating frequent load-unload cycles. In a fixed speed compressor with a Star-Delta starter, the starting current is as high as three times the full load current (FLC). With ELGi VFD, the starting current is less than the FLC.

Advantages:

- Energy savings
- Improved power factor
- Low starting current and hence reduced maximum demand
- Reduced maintenance
- High efficiency combined efficiency drive system



Heat Recovery



Cut losses Recover Energy

ELGi's Heat Recovery System is available built-in into the system and as an accessory that can be added to the EG Series compressor.

The Heat Recovery System can recover up to 76% of the waste heat generated during the compression process which can then in turn be used to heat water.

Technical Specifications - 50Hz Fixed Speed

Model	Motor Power		Working Pressure		Free Air Delivery		Weight		Noise	Dimensions L x B x H
	50Hz	kW	hp	bar g	psi g	m ³ /min	cfm	lbs	kg	dB(A)
EG 11 DM	11	15	7.0	102	2.01	71	1252	568	69	1356 x 721 x 1370
			8.0	116	1.81	64				
			9.5	138	1.64	58				
			12.5	181	1.39	49				
EG 15 DM	15	20	7.0	102	2.78	98	1296	588	69	1356 x 721 x 1370
			8.0	116	2.63	93				
			9.5	138	2.27	80				
			12.5	181	1.98	70				
EG 18 DM	18	25	7.0	102	3.40	120	1548	702	69	1500 x 821 x 1370
			8.0	116	3.23	114				
			9.5	138	2.83	100				
			12.5	181	2.32	82				
EG 22 DM	22	30	7.0	102	4.02	142	1574	714	69	1500 x 821 x 1370
			8.0	116	3.91	138				
			9.5	138	3.34	118				
			12.5	181	2.75	97				
EG 26 DM	30	40	4.5 [#]	65 [#]	5.15	182	2449	1111	69	1705 x 1111 x 1500
			7.0	102	5.01	177				
			8.0	116	4.47	158				
			9.5	138	4.16	147				
EG 30 DM	30	40	4.5 [#]	65 [#]	5.95	210	2034	923	69	1520 x 1110 x 1500
			7.0	102	5.83	206				
			8.0	116	5.38	190				
			9.5	138	4.87	172				
EG 37 DM	37	50	4.5 [#]	65 [#]	7.28	257	2308	1047	69	1520 x 1110 x 1500
			7.0	102	7.22	255				
			8.0	116	6.65	240				
			9.5	138	5.97	211				
EG 45 DM	45	60	4.5 [#]	65 [#]	8.86	313	2385	1082	69	1520 x 1110 x 1500
			7.0	102	8.75	309				
			8.0	116	7.99	293				
			9.5	138	7.39	264				
EG 55 DM	55	75	4.5 [#]	65 [#]	10.90	385	3743	1698	69	1959 x 1266 x 1754
			7.0	102	10.76	380				
			8.0	116	10.11	357				
			9.5	138	9.29	328				
EG 75 DM	75	100	4.5 [#]	65 [#]	14.98	529	4387	1990	69	2065 x 1355 x 1970
			7.0	102	14.95	528				
			8.0	116	14.02	495				
			9.5	138	12.86	454				
EG 75SP	75	100	7.0	102	14.95	528	6160	2794	76	2516 x 1884 x 1925
			8.0	116	14.73	520				
			9.5	138	13.45	475				
			12.5	181	11.19	395				
EG 90 DM	90	125	4.5 [#]	65 [#]	19.9	706	6834	3100	75	2830 x 1640 x 2125
			7.0	102	16.6	585				
			8.0	116	15.2	538				
			10.0	145	13.3	470				
EG 90P DM	90	125	4.5 [#]	65 [#]	17.27	610	6570	2980	76	2916 x 1884 x 1925
			7.0	102	17.05	602				
			8.0	116	15.66	553				
			10.0	138	13.45	475				
			12.5	181	11.86	419				

Technical Specifications - 50Hz Fixed Speed

Model	Motor Power		Working Pressure		Free Air Delivery		Weight		Noise	Dimensions L x B x H
	50Hz	kW	hp	bar g	psi g	m ³ /min	cfm	lbs	kg	dB(A)
EG 90SP	90	125	7.0	102	17.84	630	6872	3117	76	2916 x 1884 x 1925
			8.0	116	17.13	605				
			10.0	145	14.87	525				
			12.5	181	12.01	424				
EG 110 DM	110	150	4.5#	65#	24.3	858	7496	3400	75	2830 x 1640 x 2125
			7.0	102	19.8	706	6834	3100		
			8.0	116	18.4	649				
			10.0	145	16.4	580				
EG 110P DM	110	150	4.5#	65#	22.09	780	7055	3200	76	2916 x 1884 x 1925
			7.0	102	21.55	761				
			8.0	116	20.50	724				
			10.0	138	17.50	618				
EG 110SP	110	150	7.0	102	21.66	765	7467	3387	76	2916 x 1884 x 1925
			8.0	116	20.61	728				
			10.0	145	17.58	621				
			12.5	181	14.62	516				
EG 132 DM	132	175	4.5#	65#	29.1	1030	8157	3700	75	2830 x 1640 x 2125
			7.0	102	24.2	855	7496	3400		
			8.0	116	22.4	791				
			10.0	145	20.1	710				
EG 132P DM	132	175	4.5#	65#	26.76	945	8752	3970	76	2916 x 1884 x 1925
			7.0	102	26.51	936				
			8.0	116	24.35	860				
			10.0	138	21.52	760				
EG 132SP	132	175	7.0	102	27.27	963	11144	5055	76	2916 x 1884 x 2000
			8.0	116	25.20	890				
			10.0	138	22.37	790				
			12.5	181	17.53	619				
EG 160 DM	160	200	7.0	102	29.1	1026	8157	3700	75	2830 x 1640 x 2125
			8.0	116	27.0	954				
			10.0	145	24.05	850				
EG 160P DM	160	200	4.5#	65#	31.15	1100	9105	4130	76	2916 x 1884 x 1925
			7.0	102	30.81	1088				
			8.0	116	28.77	1016				
			10.0	138	25.71	908				
EG 160SP	160	200	7.0	102	32.00	1130	11277	5115	76	2916 x 1884 x 2000
			8.0	116	30.58	1080				
			10.0	138	27.41	968				
			12.5	181	21.44	757				
EG 200 DM	200	250	4.5#	65#	38.51	1360	11673	5295	78	3195 x 2108 x 2240
			7.0	102	37.94	1340				
			8.0	116	34.48	1218				
			10.0	138	31.15	1100				
EG 200SP	200	250	7.0	102	38.09	1345	13252	6011	76	3195 x 2108 x 2240
			8.0	116	35.40	1250				
			9.5	138	31.71	1120				
EG 250 DM	250	300	4.5#	65#	43.60	1540	12467	5655	78	3195 x 2108 x 2240
			7.0	102	43.18	1525				
			8.0	116	41.77	1475				
			10.0	138	37.88	1320				
EG 250SP	250	300	7.0	102	43.18	1525	14032	6365	76	3195 x 2108 x 2240
			8.0	116	42.14	1488				
			9.5	138	38.23	1350				

Technical Specifications - 50Hz Variable Speed

Model	Motor Power		Working Pressure		Free Air Delivery		Weight		Noise dB(A)	Dimensions L x B x H mm
	50Hz	kW	hp	bar g	psi g	m ³ /min	cfm	lbs		
EG 11PM	11	15	7.0	102	0.48-2.12	17-75	1283	582	69	1356 x 721 x 1370
			8.0	116	0.48-1.98	17-70				
			9.5	138	0.48-1.87	17-66				
			12.5	181	0.48-1.36	17-48				
EG15 PM	15	20	7.0	102	0.48-2.63	17-93	1283	582	69	1356 x 721 x 1370
			8.0	116	0.48-2.44	17-86				
			9.5	138	0.48-2.21	17-78				
			12.5	181	0.48-1.84	17-65				
EG18 PM	18	25	7.0	102	0.85-3.96	30-140	1477	670	69	1500 x 821 x 1370
			8.0	116	0.85-3.68	30-130				
			9.5	138	0.85-2.78	30-98				
			12.5	181	0.85-2.38	30-84				
EG22 PM	22	30	7.0	102	0.85-4.33	30-153	1477	670	69	1500 x 821 x 1370
			8.0	116	0.85-3.96	30-140				
			9.5	138	0.85-3.43	30-121				
			12.5	181	0.85-2.8	30-99				
EG30 PM	30	40	7.0	102	0.85-5.66	30-200	2401	1089	69	1705 x 1111 x 1570
			8.0	116	0.85-5.24	30-185				
			9.5	138	0.85-4.5	30-159				
			12.5	181	0.85-3.72	30-131				
EG30x PM	30	40	7.0	102	1.7-6.2	60-219	2501	1135	69	1705 x 1111 x 1570
			8.0	116	1.7-5.47	60-193				
			9.5	138	1.7-5.15	60-182				
			12.5	181	1.7-4.19	60-148				
EG37 PM	37	50	7.0	102	1.7-7.93	60-280	2501	1135	69	1705 x 1111 x 1570
			8.0	116	1.7-7.5	60-265				
			9.5	138	1.7-6.14	60-217				
			12.5	181	1.7-5.3	60-187				
EG45 PM	45	60	7.0	102	1.7-8.78	60-310	2501	1135	69	1705 x 1111 x 1570
			8.0	116	1.7-8.21	60-290				
			9.5	138	1.7-7.48	60-264				
			12.5	181	1.7-6.29	60-222				
EG 55 PM	55	75	7.0	100	2.43-11.2	87-400	3395	1540	69	1959 X 1266 X 1754
			8.0	116	2.38-10.22	85-365				
			9.5	138	2.24-9.41	80-336				
			12.5	181	1.96-7.84	70-280				
EG 75	75	100	4.5	65	2.3-14.98	81-529	4497	2040	69	2065 x 1355 x 1970
			7.0	102	2.3-14.95	81-528				
			8.0	116	2.13-14.02	75-495				
			9.5	138	2.7-12.86	95-454				
EG 75SP	75	100	7.0	102	6.8-14.95	240-528	6371	2890	76	2516 x 1884 x 1925
			8.0	116	6.94-14.73	245-520				
			9.5	138	6.94-13.45	245-475				
			12.5	181	6.94-11.19	245-395				
EG 90	90	125	7.0	102	14.07-16.7	235-590	6096	2765	75	2830 x 1640 x 2125
			8.0	116	6.59-15.2	233-538				
			10.0	145	6.31-13.3	223-470				
EG 90P	90	125	7.0	102	6.68-17.05	236-602	7121	3230	76	2916 x 1884 x 1925
			8.0	116	6.65-15.66	235-553				
			10.0	138	6.46-13.45	228-475				
			12.5	181	5.64-11.86	199-419				
EG 90SP	90	125	7.0	102	7.5-17.84	265-630	7083	3213	76	2916 x 1884 x 1925
			8.0	116	8.13-17.13	287-605				
			10.0	145	7.87-14.87	278-525				
			12.5	181	6.94-11.78	245-416				

Note:

- Free Air Delivery (FAD) is tested as per ISO 1217 : 2009 Annexure 'C' Edition: 4 for Fixed Speed Machines and as per Annexure 'E' Edition: 4 for VFD machines.
- Sound level measured as per ISO 2151, Second Edition.
- All standard models are air-cooled, please reach out to our local sales representative for water cooled options.
- Due to continuous improvements, the specifications are subject to change without prior notice.
- *Comes with lower dimensions and weight in the 230/460V variant.
- **Only available in the non-Americas market.
- *Demand=Match feature not applicable

Technical Specifications - 50Hz Variable Speed

Model	Motor Power		Working Pressure		Free Air Delivery		Weight		Noise	Dimensions L x B x H
	50Hz	kW	hp	bar g	psi g	m ³ /min	cfm	lbs		
EG 110	110	150	7.0	102	7.87-19.9	278-701	6978	3165	75	2830 x 1640 x 2125
			8.0	116	7.75-18.4	274-649				
			10.0	145	7.75-16.4	274-580				
EG 110P	110	150	7.0	102	8.1-21.55	286-761	7496	3400	76	2916 x 1884 x 1925
			8.0	116	8.04-20.5	284-724				
			10.0	138	7.87-17.5	278-618				
			12.5	181	7.14-14.87	252-525				
EG 110SP	110	150	7.0	102	8.16-21.66	288-765	7696	3491	76	2916 x 1884 x 1925
			8.0	116	7.99-20.61	282-728				
			10.0	145	7.93-17.38	280-621				
			12.5	181	9.77-14.62	345-516				
EG 132	132	175	7.0	102	10.00-24.2	353-855	7639	3465	75	2830 x 1640 x 2125
			8.0	116	9.85-22.4	348-791				
			10.0	145	9.65-20.1	341-710				
EG 132P	132	175	7.0	102	10.48-26.51	370-936	9458	4290	76	2916 x 1884 x 1925
			8.0	116	10.34-24.35	365-860				
			10.0	138	10.45-21.52	369-760				
			12.5	181	7.59-17.53	268-619				
EG 132SP	132	175	7.0	102	10.42-27.27	368-963	11431	5185	76	2916 x 1884 x 2000
			8.0	116	10.19-25.2	360-890				
			10.0	138	9.91-22.37	350-790				
			12.5	181	9.91-17.53	350-619				
EG 160	160	200	7.0	102	11.60-29.1	411-1026	8422	3820	75	2830 x 1640 x 2125
			8.0	116	11.75-26.5	415-935				
			10.0	145	11.55-24.05	408-850				
EG 160P	160	200	7.0	102	12.71-30.81	449-1088	9568	4340	76	2916 x 1884 x 1925
			8.0	116	12.57-28.77	444-1016				
			10.0	138	12.49-25.71	441-908				
			12.5	181	9.85-21.44	348-757				
EG 160SP	160	200	7.0	102	12.8-32	452-1130	11541	5235	76	2916 x 1884 x 2000
			8.0	116	12.23-30.58	432-1080				
			10.0	138	11.33-27.41	400-968				
			12.5	181	11.33-21.44	400-757				
EG 200	200	250	4.5	65	15.4-38.51	544-1360	11949	5420	78	3195 x 2108 x 2240
			7.0	102	14.8-37.94	525-1340				
			8.0	116	14.7-34.48	520-1218				
			10.0	138	14.4-31.15	512-1100				
			12.5	181	12.57-25.77	444-910				
EG 200SP	200	250	7.0	102	13.54-38.09	478-1345	13560	6151	76	3195 x 2108 x 2240
			8.0	116	13.59-35.4	480-1250				
			9.5	138	11.61-31.72	410-1120				
EG 250	250	300	4.5	65	17.4-43.6	614-1540	12743	5780	78	3195 x 2108 x 2240
			7.0	102	18.2-43.18	642-1525				
			8.0	116	18.0-41.77	635-1475				
			10.0	138	17.7-37.38	625-1320				
			12.5	181	15.34-31.15	542-1100				
EG 250SP	250	300	7.0	102	13.51-43.18	477-1525	14341	6505	76	3195 x 2108 x 2240
			8.0	116	13.51-42.14	477-1488				
			9.5	138	13.51-38.23	477-1350				

Technical Specifications - 60Hz Fixed Speed

Model	Motor Power		Working Pressure		Free Air Delivery		Weight		Noise	Dimensions L x B x H
	60Hz	kW	hp	bar g	psi g	m ³ /min	cfm	lbs		
EG 11	11	15	6.9	100	2.01	71	1213	550	69	56 x 32 x 58
			8.7	125	1.76	62				
			10.4	150	1.56	55				
			12.1	175	1.39	49				

Technical Specifications - 60Hz Fixed Speed

Model	Motor Power		Working Pressure		Free Air Delivery		Weight		Noise dB(A)	Dimensions L x B x H in
	60Hz	kW	hp	bar g	psi g	m ³ /min	cfm	lbs		
EG 15	15	20	6.9	100	2.66	94	1257	570	69	56 x 32 x 58
			8.7	125	2.41	85				
			10.4	150	2.18	77				
			12.1	175	1.84	65				
EG 18	18	25	6.9	100	3.31	117	1411	640	69	56 x 32 x 58
			8.7	125	3.11	110				
			10.4	150	2.61	92				
			12.1	175	2.32	82				
EG 22	22	30	6.9	100	4.05	143	1433	650	69	56 x 32 x 58
			8.7	125	3.79	134				
			10.4	150	3.28	116				
			12.1	175	2.72	96				
EG 30*	30	40	6.9	100	5.75	203	2401*	1089*	69	67 x 44 x 62*
			8.0	115	5.18	183				
			8.7	125	5.04	191				
			10.4	150	4.33	153				
			12.1	175	3.85	136				
EG 37*	37	50	6.9	100	7.02	248	2447*	1110*	69	67 x 44 x 62*
			8.0	115	6.51	230				
			8.7	125	6.00	228				
			10.4	150	5.75	203				
			12.1	175	4.87	172				
EG 45*	45	60	6.9	100	8.55	302	2453*	1113*	69	67 x 44 x 62*
			8.0	115	7.82	276				
			8.7	125	7.56	275				
			10.4	150	6.51	230				
			12.1	175	5.89	208				
EG 55	55	75	6.9	100	10.62	375	3503	1588	69	77.1 x 49.7 x 69
			8.0	115	10.05	355				
			8.7	125	9.71	343				
			10.4	150	8.16	288				
			12.1	175	7.67	271				
EG 75	75	100	6.9	100	14.87	525	4674	2120	69	81.3 x 53.4 x 77.6
			8.0	115	13.73	485				
			8.7	125	12.97	458				
			10.4	150	12.03	425				
			12.1	175	11.04	390				
EG 75SP	75	100	6.9	100	16.28	575	6446	2924	76	99.1 x 74.2 x 75.8
			7.9	115	15.43	545				
			8.6	125	14.50	512				
			10.3	150	13.45	475				
			12.1	175	11.04	390				
EG 90	90	125	6.9	100	17.10	604	6197	2811	75	111 x 65 x 84
			8.0	115	15.57	550				
			8.7	125	15.18	536				
			10.4	150	13.54	478				
EG 90P	90	125	6.9	100	17.42	615	6197	2811	75	114.8 x 74.2 x 75.8
			7.9	115	15.60	551				
			8.6	125	15.57	550				
			10.3	150	13.39	473				
			12.1	175	12.06	426				
EG 90SP	90	125	6.9	100	17.56	620	6945	3150	76	114.8 X 74.2 X 75.8
			7.9	115	17.19	607				
			8.6	125	16.42	580				
			10.3	150	14.72	520				
			12.1	175	12.40	438				
EG 110	110	150	6.9	100	20.39	720	6393	2900	75	111 x 65 x 84
			8.0	115	18.41	650				
			8.7	125	17.84	630				
			10.4	150	16.14	570				

Technical Specifications - 60Hz Fixed Speed

Model	Motor Power		Working Pressure		Free Air Delivery		Weight		Noise	Dimensions L x B x H
	60Hz	kW	hp	bar g	psi g	m ³ /min	cfm	lbs		
EG 110P	110	150	6.9	100	21.55	761	6824	3095	76	114.8 x 74.2 x 75.8
			7.9	115	21.38	755				
			8.6	125	19.26	680				
			10.3	150	16.85	595				
			12.1	175	15.01	530				
EG 110SP	110	150	6.9	100	21.65	765	7210	3270	76	114.8 X 74.2 X 75.8
			7.9	115	21.52	760				
			8.6	125	19.37	684				
			10.3	150	17.61	622				
			12.1	175	15.77	557				
EG 132P**	132	175	6.9	100	26.17	924	8936	4053	76	114.8 x 74.2 x 75.8
			8.6	125	23.05	814				
			10.3	150	20.84	736				
			12.1	175	17.90	632				
EG 132SP**	132	175	6.9	100	26.90	950	11416	5178	76	114.8 x 74.2 x 78.7
			8.6	125	23.81	841				
			10.3	150	21.72	767				
			12.1	175	17.90	632				
EG 160	160	200	6.9	100	27.61	975	7840	3556	75	111 x 65 x 84
			8.0	115	25.12	887				
			8.7	125	24.07	850				
			10.4	150	22.03	778				
EG 160P	160	200	6.9	100	29.76	1051	8936	4053	76	114.8 x 74.2 x 75.8
			7.9	115	28.03	990				
			8.6	125	26.05	920				
			10.3	150	24.3	858				
			12.1	175	20.39	720				
EG 160SP	150	200	6.9	100	30.75	1086	11528	5229	76	114.8 x 74.2 x 78.7
			7.9	115	29.85	1054				
			8.6	125	26.62	940				
			10.3	150	25.49	900				
			12.1	175	20.39	720				
EG200	200	250	6.9	100	36.10	1275	12586	5709	78	125.8 x 83 x 88.2
			8.0	115	33.47	1182				
			8.7	125	33.27	1175				
			10.4	150	28.32	1000				
EG 200SP	200	250	6.9	100	36.1	1275	13992	6346	76	125.8 x 83 x 88.2
			8.7	125	33.27	1175				
			10.4	150	28.32	1000				
EG 250	250	300	6.9	100	42.90	1515	12632	5730	78	125.8 x 83 x 88.2
			8.0	115	38.37	1355				
			8.7	125	38.23	1350				
			10.4	150	33.13	1170				
EG 250SP	250	300	6.9	100	42.9	1515	14038	6367	76	125.8 X 83 X 88.2
			8.7	125	38.23	1350				
			10.4	150	33.13	1170				

Technical Specifications - 60Hz Variable Speed

Model	Motor Power		Working Pressure		Free Air Delivery		Weight		Noise	Dimensions L x B x H
	60Hz	kW	hp	bar g	psi g	m ³ /min	cfm	lbs		
EG 11PM	11	15	6.9	100	0.48-2.18	17-77	1283	582	69	53 x 28 x 54
			7.9	115	0.48-2.12	17-75				
			8.6	125	0.48-2.04	17-72				
			10.3	150	0.48-1.59	17-56				
			12.1	175	0.48-1.42	17-50				

Technical Specifications - 60Hz Variable Speed

Model	Motor Power		Working Pressure		Free Air Delivery		Weight		Noise dB(A)	Dimensions L x B x H in
	60Hz	kW	hp	bar g	psi g	m ³ /min	cfm	lbs		
EG15 PM	15	20	6.9	100	0.48~2.63	17~93	1283	582	69	53 x 28 x 54
			7.9	115	0.48~2.49	17~88				
			8.6	125	0.48~2.41	17~85				
			10.3	150	0.48~2.18	17~77				
			12.1	175	0.48~1.84	17~65				
EG18 PM	18	25	6.9	100	0.85~3.77	30~133	1477	670	69	59 x 32 x 54
			7.9	115	0.85~3.51	30~124				
			8.6	125	0.85~3.4	30~120				
			10.3	150	0.85~2.92	30~103				
			12.1	175	0.85~2.55	30~90				
EG22 PM	22	30	6.9	100	0.85~4.19	30~148	1477	670	69	59 x 32 x 54
			7.9	115	0.85~4.08	30~144				
			8.6	125	0.85~3.96	30~140				
			10.3	150	0.85~3.48	30~123				
			12.1	175	0.85~2.95	30~104				
EG30 PM	30	40	6.9	100	0.85~5.52	30~195	2401	1089	69	67 x 44 x 62
			7.9	115	0.85~5.1	30~180				
			8.6	125	0.85~4.81	30~170				
			10.3	150	0.85~4.64	30~164				
			12.1	175	0.85~3.79	30~134				
EG30x PM	30	40	6.9	100	1.7~6.03	60~213	2501	1135	69	67 x 44 x 62
			7.9	115	1.7~5.41	60~191				
			8.6	125	1.7~5.24	60~185				
			10.3	150	1.7~5.15	60~182				
			12.1	175	1.7~4.19	60~148				
EG37 PM	37	50	6.9	100	1.7~7.99	60~282	2501	1135	69	67 x 44 x 62
			7.9	115	1.7~7.87	60~278				
			8.6	125	1.7~7.36	60~260				
			10.3	150	1.7~6.2	60~219				
			12.1	175	1.7~5.32	60~188				
EG45 PM	45	60	6.9	100	1.7~8.75	60~309	2501	1135	69	67 x 44 x 62
			7.9	115	1.7~8.13	60~287				
			8.6	125	1.7~7.65	60~270				
			10.3	150	1.7~7.14	60~252				
			12.1	175	1.7~6.09	60~215				
EG 55 PM	55	75	6.9	100	2.35~11.04	83~390	3440	1560	69	80.2 X 49.7 X 69
			7.9	115	2.41~10.31	85~364				
			8.6	125	2.32~9.88	82~349				
			10.3	150	2.18~8.72	77~308				
EG 75	75	100	6.9	100	2.47~14.87	87~525	4829	2190	69	81.3 x 53.4 x 77.6
			8.0	115	2.44~13.73	86~485				
			8.7	125	2.44~12.97	86~458				
			10.4	150	2.7~12.03	95~425				
			12.1	175	4.22~11.04	149~390				
EG 75SP	75	100	6.9	100	6.8~16.28	240~575	6658	3020	76	99.1 x 74.2 x 75.8
			7.9	115	6.94~15.43	245~545				
			8.6	125	7.06~14.5	249~512				
			10.3	150	6.94~13.45	245~475				
			12.1	175	6.94~11.04	245~390				
EG 90	90	125	6.9	100	6.66~17.1	235~604	6197	2811	75	111 x 65 x 84
			8.0	115	6.69~15.46	236~546				
			8.7	125	6.55~15.18	231~536				
			10.4	150	6.35~13.54	224~478				
EG 90P	90	125	6.9	100	6.94~17.33	245~612	6197	2811	75	114.8 x 74.2 x 75.8
			7.9	115	6.6~15.6	233~551				
			8.6	125	6.18~15.57	218~550				
			10.3	150	6.12~13.39	216~473				
			12.1	175	5.67~12.06	200~426				

Technical Specifications - 60Hz Variable Speed

Model	Motor Power		Working Pressure		Free Air Delivery		Weight		Noise dB(A)	Dimensions L x B x H in
	60Hz	kW	hp	bar g	psi g	m ³ /min	cfm	lbs		
EG 90SP	90	125	6.9	100	7.96-17.56	281-620	7041	3194	76	114.8 X 74.2 X 75.8
			7.9	115	7.28-17.19	257-607				
			8.6	125	7.96-16.42	281-580				
			10.3	150	7.90-14.72	279-520				
EG 110	110	150	6.9	100	7.85-20.39	277-720	6393	2900	75	111 x 65 x 84
			8.0	115	7.93-18.41	280-650				
			8.7	125	7.76-17.84	274-630				
			10.4	150	7.42-16.14	262-570				
EG 110P	110	150	6.9	100	7.88-21.55	278-761	6824	3095	76	114.8 x 74.2 x 75.8
			7.9	115	8.44-21.38	298-755				
			8.6	125	7.65-19.26	270-680				
			10.3	150	7.82-16.85	276-595				
EG 110SP	110	150	6.9	100	7.87-21.65	278-765	7314	3318	76	114.8 X 74.2 X 75.8
			7.9	115	8.10-20.59	286-727				
			8.6	125	7.31-19.37	258-684				
			10.3	150	9.17-16.85	324-595				
EG 132P**	132	175	6.9	100	8.84-26.17	312-924	8936	4053	76	114.8 x 74.2 x 75.8
			8.6	125	7.28-23.05	257-814				
			10.3	150	6.94-20.84	245-736				
			12.1	175	5.92-17.9	209-632				
EG 132SP**	132	175	6.9	100	10.43-26.9	368-950	11703	5308	76	114.8 x 74.2 x 78.7
			8.6	125	10.34-23.81	365-841				
			10.3	150	9.94-21.72	351-767				
			12.1	175	9.94-17.9	351-632				
EG 160	160	200	6.9	100	10.91-27.61	385-975	7840	3556	75	111 x 65 x 84
			8.0	115	10.79-25.12	381-887				
			8.7	125	10.85-24.07	383-850				
			10.4	150	10.68-22.03	377-778				
EG 160P	160	200	6.9	100	11.59-29.76	409-1051	8936	4053	76	114.8 x 74.2 x 75.8
			7.9	115	11.67-28.03	412-990				
			8.6	125	2.89-26.05	102-920				
			10.3	150	10.57-24.3	373-858				
EG 160SP	160	200	6.9	100	11.76-30.75	415-1086	11704	5309	76	114.8 x 74.2 x 78.7
			7.9	115	11.81-29.85	417-1054				
			8.6	125	10.6-26.62	374-940				
			10.3	150	10.2-25.49	360-900				
EG 200	200	250	6.9	100	14.19-36.1	501-1275	12586	5709	78	125.8 x 83 x 88.2
			8.0	115	13.97-33.47	493-1182				
			8.7	125	14.33-33.27	506-1175				
			10.4	150	13.74-28.32	485-1000				
EG 200SP	200	250	6.9	100	13.36-36.1	471.83-1275	14296	6484	76	125.8 X 83 X 88.2
			8.7	125	12.38-33.27	437.03-1175				
			10.4	150	10.28-28.32	382-1000				
EG 250	250	300	6.9	100	17.39-42.9	614-1515	12632	5730	78	125.8 x 83 x 88.2
			8.0	115	15.98-38.37	564-1355				
			8.7	125	16.12-38.23	569-1350				
			10.4	150	15.86-33.13	560-1170				
EG 250SP	250	300	6.9	100	13.34-42.9	471-1515	14342	6505	76	125.8 X 83 X 88.2
			8.7	125	13.34-38.23	471-1350				
			10.4	150	13.34-33.13	471-1170				

Note:

- Free Air Delivery (FAD) is tested as per ISO 1217 : 2009 Annexure 'C' Edition: 4 for Fixed Speed Machines and as per Annexure 'E' Edition: 4 for VFD machines.
- Sound level measured as per ISO 2151, Second Edition.
- All standard models are air-cooled, please reach out to our local sales representative for water cooled options.
- Due to continuous improvements, the specifications are subject to change without prior notice.
- *Comes with lower dimensions and weight in the 230/460V variant.
- **Only available in the non-Americas market.

ELGi

Always Better.

Elgi Equipments Limited is a global air compressor manufacturer with a broad line of innovative and technologically superior compressed air systems.

ELGi has consistently worked towards ensuring that its customers achieve their productivity goals while keeping the cost of ownership low. ELGi offers a complete range of

compressed air solutions from oil lubricated and oil free rotary screw compressors, oil lubricated and oil free reciprocating compressors and centrifugal compressors, to dryers, filters, and downstream accessories.

The company's portfolio of over 400 products has found wide application across industries.

60+

Years of Customer-Centric Innovation

2 Mn+

Installations Worldwide

120+

Countries and Counting



DEMING PRIZE
2019

ELGi is the first globally established industrial air compressor manufacturer to be awarded the Deming Prize for Excellence in Total Quality Management.

ELGi[®]
Always Better.

