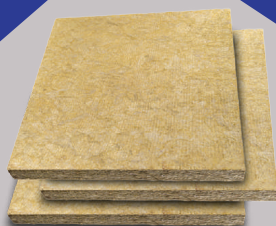
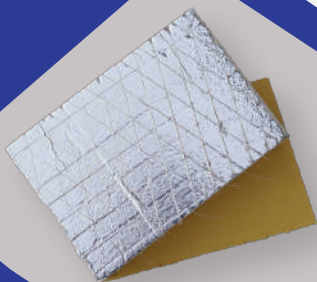


Shiv Sales Corporation®



About Us

Shiv Sales Corporation is a manufacturer, importer, and distributor of all types of Insulation items like Stone Wool Insulation, Glasswool Insulation, Phenolic Board, Ceramic Fiber Paper, Ceramic Fiber Board, Bubble Insulation, XLPE Insulation, XPS Board and all waterproofing items.



Our Vision

Our Vision is to provide quality that exceeds the expectations of our esteemed customers. innovation and advanced technology.

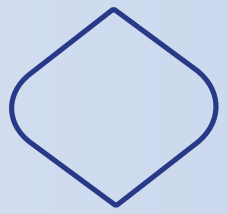


Our Mission

Our Mission is to build long term relationships with our customers by provide quality products by pursuing business through innovation and advanced technology.



OUR PRODUCTS

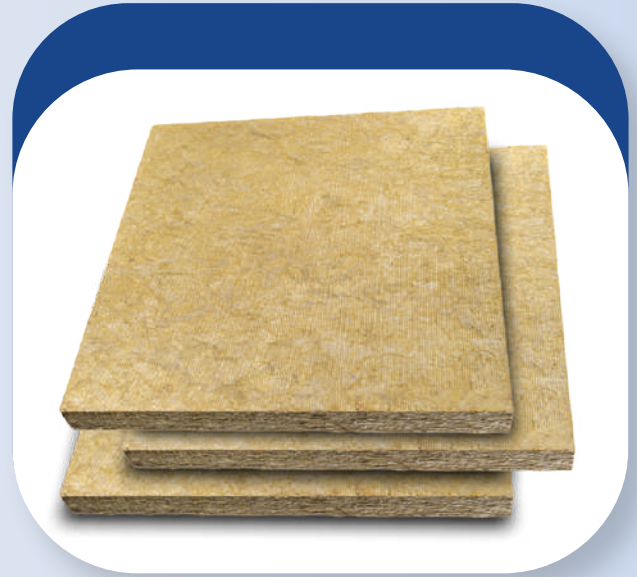


▶ RESIN BONDED SLAB(RB SLAB)

Description

Resin Bonded Slabs are known for their uniform fiber distribution, lay pattern, & bulk density which contribute to excellent load bearing characteristics. These slabs offer a versatile material solution for thermal insulation fire protection & sound absorption. RB Slabs can be faced on one side or both side Aluminium FSK, Black Glass Tissue Paper, White Glass Tissue Paper, Alu Glass Tissue Paper.

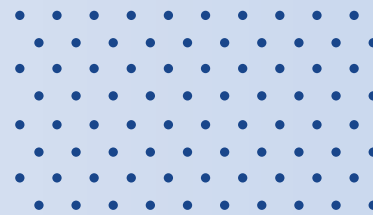
Resin Bonded Slabs confirming to IS 8183, ASTM C 612.



Thermal Services – Upto 750 Deg. C

Fire Safety – Non Combustible, IS – 3144: 1992

Acoustical Properties – Suitable for Acoustic Insulation



Advantages

- ☞ Provides a combination of thermal insulation, fire protection & sound absorption properties.
- ☞ Versatile material that is easy to transport, cut, fit & handle.
- ☞ Suitable for thermal & acoustic insulation for flat surfaces or slightly curved surfaces.
- ☞ Wide range of service temperatures & can be used for cold insulation down to -50° C.

Standard Availability

- ☞ Slab Size: 1 m x 0.5 m, 1.2 m x 0.6 m
- ☞ Density: 48 kg/m³ to 200 kg/m³
- ☞ Thickness: 25 mm to 100 mm
- ☞ Facing Options: Aluminium FSK, Black Glass Tissue Paper, White Glass Tissue Paper, Alum Glass Tissue Paper.
- ☞ Packaging: HDPE Bag & LD Plastic
- ☞ Water Repellent Products are available upon customer request.



▶ LIGHTLY RESIN BONDED MATTRESS

(LRB MATTRESS)

Description

Lightly Resin Bonded Mattress are characterized by the uniform distribution of fibers, fine diameter & flexibility. These mattress are carefully controlled to achieve predetermined density & thickness. Mattress can be faced on one side or both side metal facing G.I. or S.S. Wire Mesh.

Lightly Resin Bonded Mattress confirming to IS 8183, ASTM C 592.

Thermal Services – Upto 750 Deg.C

Fire Safety – Non Combustible, IS – 3144: 1992

Acoustical Properties – Suitable for Acoustic Insulation

Advantages

- “ Excellent stability & prevention of heat losses due to uniform thickness & density.
- “ Versatile & flexible multipurpose insulating media.
- “ Wide range of service temperatures.
- “ Long service life & free from CFC & HCFC's and other blowing gases.
- “ Easy to handle and install.
- “ Excellent thermal, acoustic and fire properties.

Standard Availability

- “ Mattress Size: 1.220 m x 1.640 m
- “ Roll Sizes: 0.8 m x 5 m, 1.220 m x 3.280 m, 1.220 m x 4.92 m
- “ Density: 80 kg/m³ to 160 kg/m³
- “ Thickness: 25 mm to 100 mm
- “ Metal Facing: G.I. or S.S. Wire Mesh
- “ Packaging: HDPE Bag & LD Plastic
- “ Water Repellent Products available upon customer request.



BUILDING ROLL

Description

Building Rolls are low density insulation material made of non combustible mineral wool fibers bonded with thermosetting resin binders. These rolls are machine made and factory laminated with reinforced aluminium foil and other materials on one side.

Building Roll confirming to IS 8183.

Thermal Services - Upto 550 Deg.C

Fire Safety - Non Combustible, IS - 3144: 1992

Acoustical Properties - Suitable for Acoustic Insulation

Advantages

- ☛ Provides a combination of thermal insulation, fire protection & sound absorption properties.
- ☛ Baked by Aluminium FSK, acting as a vapor barrier & preserving the integrity of mineral wool.
- ☛ Low density material for efficient insulation for flat or slightly curved surfaces.
- ☛ Versatile material that is easy to transport, cut, fit & handle.
- ☛ Excellent stability & prevention of heat losses due to uniform thickness & density.
- ☛ Long service life free from CFC & HCFC's and other blowing gases.

Standard Availability

- ☛ Available with and without Aluminium Foil
- ☛ Roll Size - 1.1 m X 7.0 m to 10 m (With Aluminium Foil)
- ☛ Roll Size - 1.1 m X 5 m (Without Aluminium Foil)
- ☛ Density - 48 kg/m³ to 96 kg/m³
- ☛ Thickness - 25 mm to 100 mm • Facing Options - Aluminium FSK,
- ☛ Packaging - LD Plastic
- ☛ Water Repellent - Production Available upon customer request.



▶ LOOSE MINERAL WOOL

Description

Superfine Loose Mineral Wool is a high quality insulation material made from fine fiber extracted from selected basalt stone/slag. It offers favorable handling & application characteristics, making it an ideal choice for various insulation applications. The Loose Mineral Wool is fire proof, dirt proof & moisture resistant, it is chemical inert, non corrosive, durable, odorless & easy to handle and store.

Superfine Loose Mineral Wool confirming to IS 3766:86.

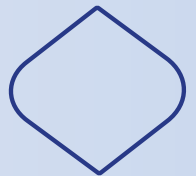
Thermal Services - Upto 750 Deg.C

Fire Safety - Non Combustible, IS-3144: 1992

Acoustical Properties - Suitable for Acoustic Insulation

Standard Availability

- ⌚ Net Weight: 40 kg per bag
- ⌚ Packing: HDPE bag



▶ PIPE INSULATION

Description

Pre formed sectional pipe insulation is a specialized product made of chemically coated mineral fibers in specific size. These pre fabricated pipe sections are design to provide thermal, acoustic & fire protection for pipe lines. Sectional Pipe Insulation (SPI) confirming to IS 9842:94, ASTM C 547.

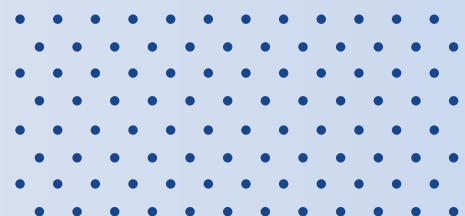
Thermal Services - Upto 750 Deg. C

Fire Safety - Non Combustible, IS - 3144: 1992

Acoustical Properties - Suitable for Acoustic Insulation

Standard Availability

- ⌚ Size of Pipe: 1.0 m Length (1 RMT)
- ⌚ Density: 128 kg/m³ to 160 kg/m³
- ⌚ Thickness: 25 mm to 110 mm
- ⌚ Diameter: 1 1/2" to 16"
- ⌚ Facing: Aluminum FSK (Foil-Scrim- Kraft)



FIBER GLASSWOOL

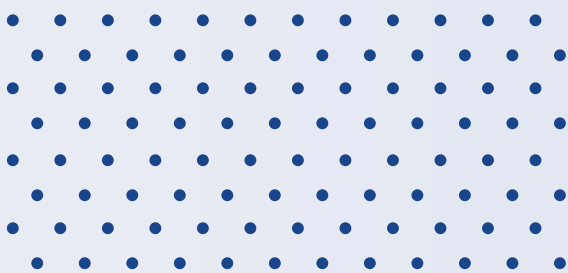
Description

Fiber Glasswool is a type of insulation material made from glass fibers. It is designed for thermal and acoustic insulation in various applications, including buildings, industrial facilities, and HVAC systems.



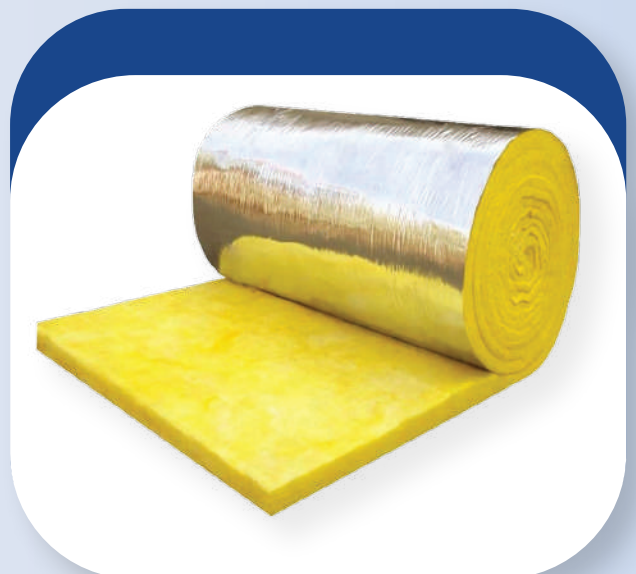
Applications of Fiber Glasswool

- ⌚ **Residential Buildings** - Used in walls, attics, and roofs to provide thermal insulation and soundproofing.
- ⌚ **Commercial Buildings** - Ideal for office spaces, retail environments, and hotels where both thermal comfort and acoustic performance are important.
- ⌚ **Industrial Facilities** - Often used for insulating pipes, ducts, and equipment to maintain temperature and prevent energy loss.
- ⌚ **HVAC Systems** - Fiber Glasswool is commonly used in duct insulation to improve energy efficiency and reduce noise from air handling systems.
- ⌚ **Acoustic Panels** - Fiber Glasswool can be used to create acoustic panels for theaters, auditoriums, and recording studios, enhancing sound quality.



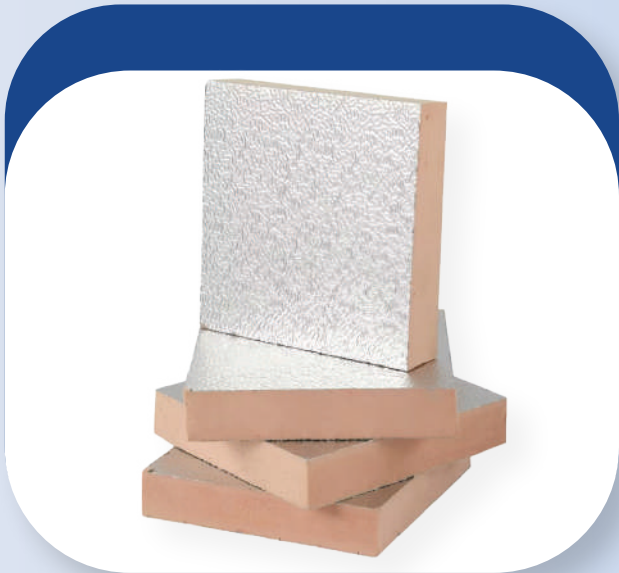
Standard Availability

- ⌚ Density : 12 to 48 kg/m³
- ⌚ Thickness : 25 to 100 mm
- ⌚ Width : 1.1 to 1.2 m
- ⌚ Length : 7.5 to 30 m
- ⌚ Available with or without facing



Description

APF Insulation Board will not burn in case of open fire, carbonize at high temperature, and will not melt, shrink or drip. It can be used for composite Mortar Meshcloth, Aluminium Foil etc on the board surface. Widely used for roof insulation and wall insulation.



Index	(UNIT)	(TECHNICAL INDEX)	(NOTES)
Smoke density Grade	%	6	—
Density	Kg/m³	50	—
Combustion Grade	—	B1	Fireproof / non-combustible
Calorific Value	MJ/kg	≤ 4.2	—
Heat Release	MJ/m²	≤ 16.8	—
Working Temperature	°C	-196 ~ +120	—
Panel Specifications	mm	1200 * 600	Other specifications need to be customized
Thickness	mm	50	—
Thermal Conductivity	W/m·k	0.020 – 0.024	Superior to National Standard
Compressive strength	Kpa	≥ 150	—
Bending Fracture Force	N	34	—
Water Absorption	%	< 7	—
R value (10cm Thickness)	—	Around 5	—

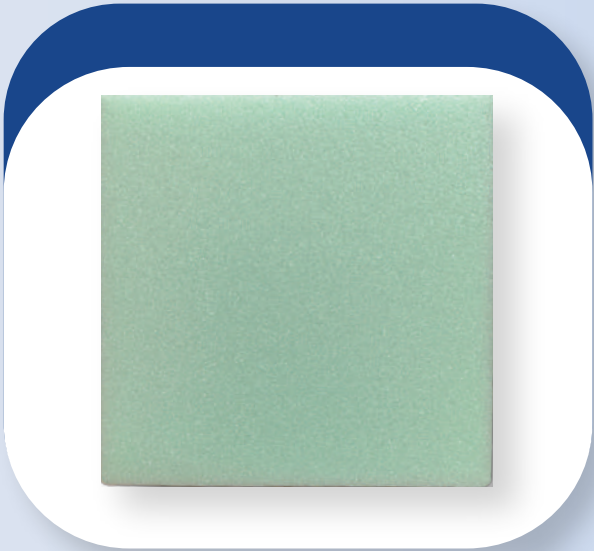
▶ Extruded Polystyrene Sheet (XPS BOARD)

XPS Extruded Board Theory

XPS board features a closed-cell structure for superior insulation, low thermal conductivity, and minimal water absorption. Its durable design enhances energy efficiency and ensures long-term performance. Ideal for basements, outdoor installations, and underground applications.

Main Characteristics of XPS

- ⌚ **High Strength:** XPS board is lightweight, durable, and insulative with strong load support.
- ⌚ **Waterproof:** XPS board offers a closed cell structure, low water absorption, and durable insulation.
- ⌚ **Flexible & Multi-Purpose:** XPS board is easy to cut and used for insulation, truck bodies, and doors.
- ⌚ **Lightweight:** With 30-40 kg/m³ density, XPS board is lightweight and handy.
- ⌚ **Excellent Heat Resistance:** XPS ensures top insulation & savings
- ⌚ **Recyclable & Eco-Friendly:** XPS foam is recyclable and sustainable despite being non biodegradable.
- ⌚ **Anti-Microbial & Corrosion Resistant:**XPS board resists microbes, ideal for basements and outdoors.
- ⌚ **Chemical Resistance:** XPS board resists chemicals and moisture.



Specifications & Size

Length (L) mm	Width (W) mm	Thickness (T) mm
1250 mm	600	25,50,75,100

Phyiscal and Mechanical Properties

Item	Unit	Performance Index									
		With Epidermis								Without Epidermis	
		x150	x200	x250	x300	x350	x400	x450	x500	W200	W300
Compressive Strength	KPa	>150	>200	>250	>300	>350	>400	>450	>500	>200	>300
Water Absorption	Volume Fraction	<1.5		<1.0						<2.0	<1.5
23°C+1°C Permeability Coefficient RH50%+5%	Ng(m.s.Pa)	<3.5			<3.0			<2.0		<3.5	<3.0
Heat Resistance Thickness (25mm) Average 10°C 25°C	(m².k)/W	>0.89 >0.83			>0.93 >0.86			>0.76 >0.71		>0.83 >0.78	
Heat Resistance Thickness (25mm) Average 10°C 25°C	W/(m.k)	<0.028 <0.030			<0.027 <0.029			<0.033 <0.035		<0.030 <0.032	
Dimensional Stability 70°C+2°C, 48h	%	<2.0		<1.5			<1.0		<2.0	<1.5	

► Ceramic Fiber Board

Product Description

Being a prominent ceramic fiber board manufacturer and exporter in India, we use refractory fibers and binders to prepare our ceramic fiber boards.

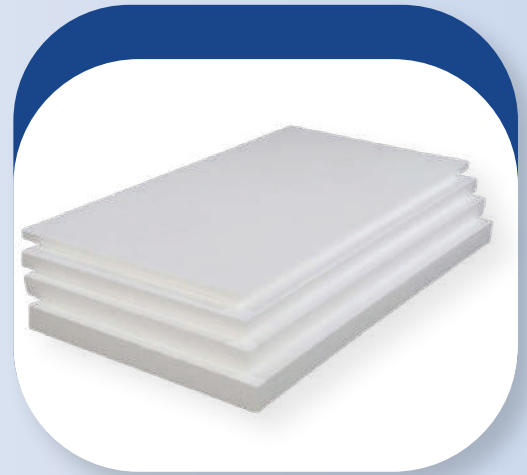
- “ The ceramic fiber we manufacture has excellent mechanical strength and low organic content.
- “ Our ceramic fiber bulk boards are durable and functional, making them suitable for your innovative designs.
- “ Our products have low thermal conductivity and the ability to work effectively under different temperature conditions.

High Temperature Stability, Excellent Thermal Shock resistance, Excellent Strength hardness.

Product Applications

XLPE FOAM-DIMENSIONS & SIZES THAT ARE MANUFACTURED IN ROLLS/SHEETS/TUBES

Grade in °C	Density (kg/m ³)	Al ₂ O ₃ (%)	SiO ₂ (%)	ZrO ₂ (%)	Loss Ignition (%)
1260 °C	320-380	45-48	52-55	-	4-7
1425 °C	320-380	35-37	47-49	14-18	4-7
Size			Thickness		
1000mm x 500mm			12mm to 75mm		



► Ceramic Fiber Paper

Product Description

The Ceramic Fiber Paper is manufactured using refractory fiber with high purity, making it ideal for high-temperature insulation applications. Advanced manufacturing technology ensures an even fiber distribution, while the paper's thickness and density are strictly controlled. It is made of refractory ceramic fiber with a small amount of binder, which is scientifically selected and carefully regulated. The binder will be completely burned off during use. The product does not contain asbestos, making it a perfect material for sealing and insulation.

Product Features

- “ Easy to cut, wrap and form
- “ Low Thermal conductivity and heat storage
- “ Excellent Thermal shock and flame resistance
- “ Light Weight & Resistant
- “ Excellent hydrophobic property
- “ Good Dielectric strength
- “ Free of asbestos

Product Applications

- “ Asbestos Paper replacement
- “ Investment cast mold wrap insulation
- “ One-time consumable insulating applications
- “ Back-up lining for metal linings
- “ Applications where low binder content is required
- “ Thermal and electrical insulation
- “ Upgrade for fiberglass paper and blanket products



Thickness	1mm To 10mm
-----------	-------------

NITRILE INSULATION

Product Description

This material has low thermal conductivity and high water vapour diffusion resistance. It is CFC/HCFC free, dust and fiber free. It ensures energy saving in eco-friendly manner. This product meets Insulation requirement in diverse fields.

Applications

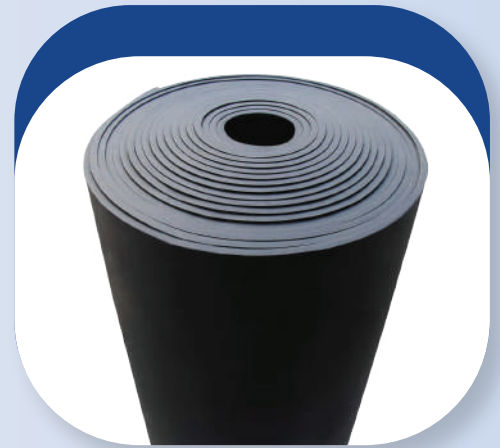
Insulation to prevent condensation, reduce energy losses and protection against mechanical damage on HVAC ducts/pipes, used in Airport, Hospitals, Factories, Offices, Malls, Duct, Chiller System.

Assembly

Insulation to prevent condensation, reduce energy losses and protection against mechanical damage on HVAC ducts/pipes, used in Airport, Hospitals, Factories, Offices, Malls, Duct, Chiller System.

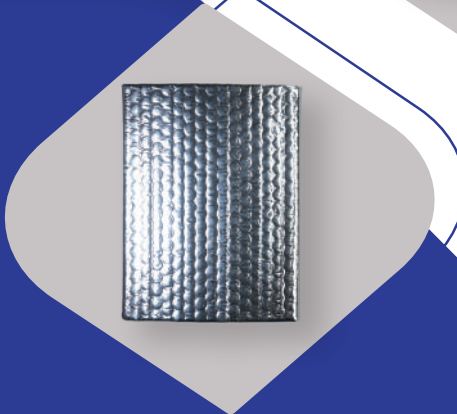
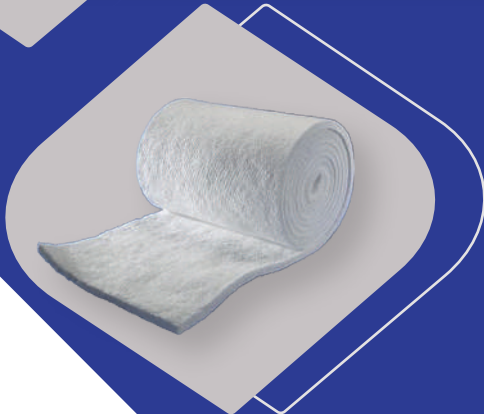
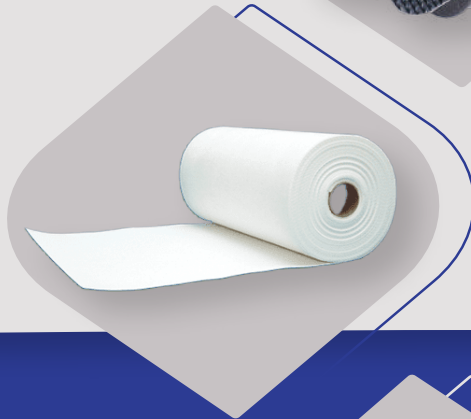
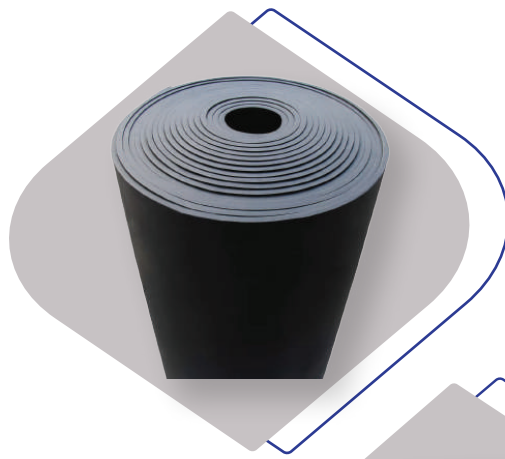
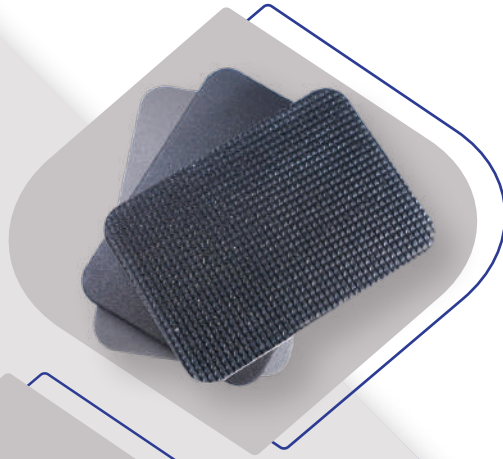
Size Availability

Insulation to prevent condensation, reduce energy losses and protection against mechanical damage on HVAC ducts/pipes, used in Airport, Hospitals, Factories, Offices, Malls, Duct, Chiller System.



We also Deal in Waterproofing items and Adhesives

- “ BITUMEN PRIMER
- “ BITUMEN & COLD EMULSION
- “ PLASTIC FELT
- “ TARPLASTIC
- “ KOTE
- “ URP
- “ FLOOR HARDNER
- “ SHUTTERING OIL
- “ ACRYLIC & PU WATERPROOFING COATING
- “ SHALITEX BITUMEN BOARD
- “ DURA HD-100 BOARD
- “ BACKUP ROD
- “ TAPECRETE
- “ APP MEMBRANE
- “ FIBER GLASS MESH
- “ GEO TEXTILE
- “ COLD TAR PITCH
- “ CONCRETE ADMIXTURES
- “ GROUTING COMPOUND
- “ PYPKOTE
- “ CICO NO. 1
- “ EPOXY FLOORING
- “ POLYURETHANE SEALANT(PU)
- “ CPRX COMPOUND
- “ SEALING COMPOUND
- “ FEVICOL SR 505
- “ FEVICOL SR 998
- “ STARBOND
- “ ALUMINIUM TAPE
- “ FLASH TAPE
- “ TARFELT



Shiv Sales Corporation[®]

Contact Us —

Phone No: +91 9810 534 841, +91 8383 029 491
+91 8800 609 024

Email : www.shyamssc@hotmail.com

Website : www.shivsalescorporation.in

Address : 5272 M.F. Shraddhanand Marg, Ajmeri
Gate, Delhi - 110006