

PROTON POWER SERVICE

The logo for Proton Power Service is a circular emblem. The left half features a green silhouette of a power plug with three prongs, positioned as if plugging into a green and orange sunburst. The right half of the circle is a blue globe with white grid lines. Below the emblem, the text "PROTON POWER SERVICE" is written in a bold, dark blue, serif font. The entire logo is centered on a white background, which is framed by a thin green border. The top of the frame has a light grey gradient, and the bottom has a white gradient. The entire graphic is set against a dark blue background with an orange vertical bar on the left and a horizontal orange bar on the right.

PROTON POWER SERVICE

❖ Who are we and what we do?

❖ We have three Divisions

❖ Solar Utility

❖ Installation, Commissioning and Testing of RMU

❖ Electrical Infrastructure Works

SOLAR UTILITY

- Solar Panel Distributionship
- Solar EPC Contracts
- Solar Residential Projects
- Solar INC Contracts
- Solar HT Connection Meter Dealership



SOLAR PANEL WE USED

- We use solar panels Like **Contendre Green Energy Pvt Ltd, Solex Energy Ltd, Goldi Solar, Waaree Energies Limited, and Adani Solar.** all of which play a significant role in supporting the growth of renewable energy through high-quality manufacturing, installation, and solar power solutions.



SOLAR MARKET ANALYSIS

Benefits of Solar Rooftops

- Reduced electricity bills
- Low maintenance cost
- Environment-friendly
- Long-term savings
- Government subsidies & tax benefits
- Energy independence
- Increases property value
- Suitable for remote/off-grid areas

Challenges and Barriers to Implementation

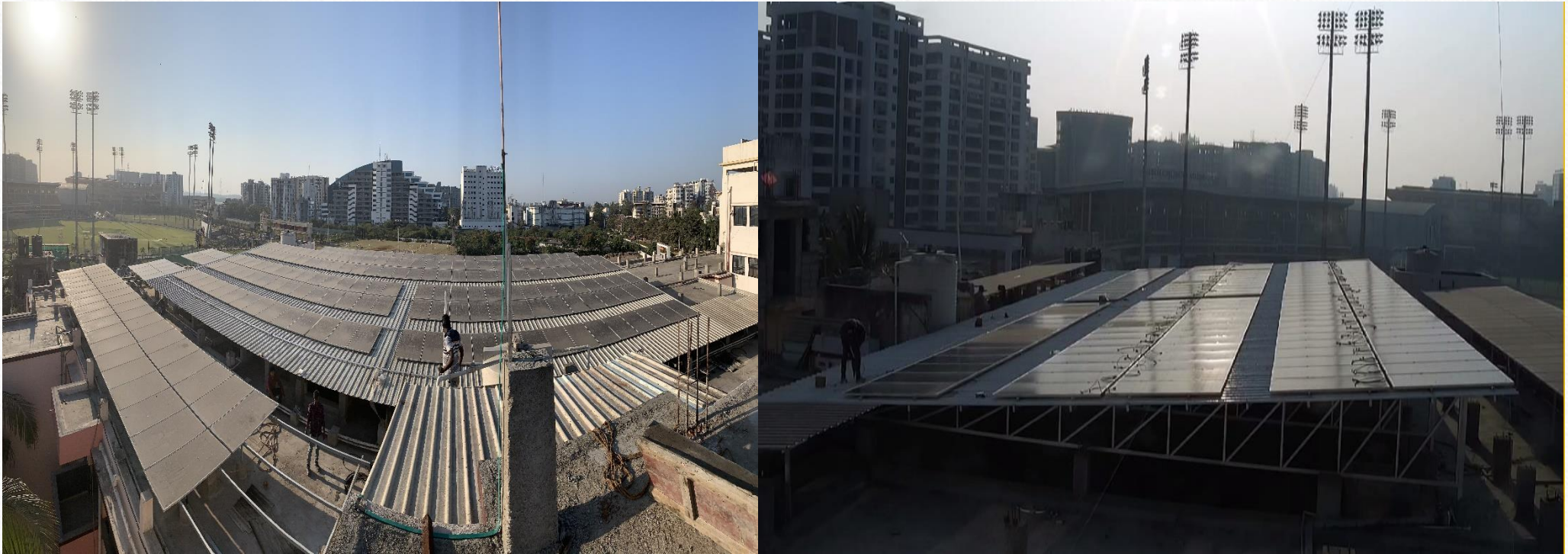
- High initial investment cost
- Lack of awareness and technical knowledge
- Land availability issues
- Intermittent energy generation (depends on sunlight)
- Grid integration challenges
- Limited battery storage options and high cost

SOLAR EPC CONTRACTOR



AMBIKANIKETAN TEMPLE 60KW SOLAR INSTALLATION

SOLAR INC PROJECTS



OLDAGE HOME 100KW PROJECT UMRA

M/S BHANUSHALI PACKING 100 KW



BALDA INDUSTRIAL PARK, SURVEY NO:305 Pardi - 396191

GAIL INDIA LIMITED(130KW)



vivo Y75

SOLAR HT CONNECTION METER DEALERSHIP

- Solar HT Connection

- HT Bidirectional Meter
- LT Solar Meter
- Ring Type CT
- TTB
- GPRS GSM Modem For Discom

- Make

- Secure
- L&t
- Ashmor
- Genus
- Genius
- Eppeltone

HTMC PANEL



HTMC PANEL



HTMC PANEL

- **HTMC (High Tension Metering Cubicle)** Panel is used for accurate energy measurement, protection, and control in 11kV power distribution systems. It houses CTs, PTs, metering equipment, and safety components to ensure reliable and safe high-voltage metering.
- We are approved vendor for Gujarat DISCOM for HT Metering unit.
- HTMC Panel ensures long-term performance, reduced maintenance, and enhanced operational safety for industrial, commercial, and utility power distribution applications.

RMU

- **The RMU (Ring Main Unit)** is used in 11kV medium-voltage distribution systems for safe switching, protection, and ensuring continuous power supply through ring network operations.
- Authorized Channel Partners for CGPISL of Ring Main Unit for 11kv, 22kv and 33kv SF6 Gas Insulated Suitable for indoor and outdoor installation.
- Compact size, Maintenance Free, and Safety Operation.
- Inbuilt Earthing Switch and off load Isolator.

RMU Testing Service

1) Insulation Resistance Test

- Verification of insulation health using Megger
- Ensures no leakage or breakdown

2) Earthing Value Measurement

- Measurement of earth resistance
- Ensures proper fault current dissipation

3) Contact Resistance Test

- Measurement of resistance across main contacts
- Ensures proper conductivity and minimal losses

4) Torque Value Measurement of Terminations

- Verification of tightening torque of all terminations
- Ensures safe and reliable electrical connections

Installation, Commissioning and Testing of RMU

Benefits

- Ensures reliable and uninterrupted power supply
- Enhances network safety and fault protection
- Improves system performance and load management
- Verifies correct operation of all RMU components
- Reduces risk of equipment failure and breakdown
- Ensures proper Earthing and safety compliance
- Minimizes downtime through accurate fault detection
- Ensures compliance with utility and regulatory standards
- Enhances overall efficiency of the distribution network

Challenges and Barriers to Implementation

- High project cost and budget constraints
- Technical complexity in installation and integration
- Limited availability of skilled manpower
- Delay in approvals and documentation
- Site constraints and space issues
- Supply chain delays for equipment
- Safety risks during installation and testing
- Maintenance and support limitations after installation

UNDERGROUND WORK

1. HDD & Cable Laying Work
2. Heat Shrink Terminations
3. Earthing Installation (As per DGVCL Guidelines)
4. Straight Through Jointing
5. Route Marker Installation
6. Double Pole Structure Erection
7. Liaisoning Services

ELECTRICAL RELATED ALL MATERIAL SUPPLY

- XLPE UV Coating UG Cables
- Electrical Measuring Instruments Supply
- Safety Helmets And Gloves
- TMS Related all Material
- SMC Meter Box

ROUTE TRACING FOR UNDERGROUND HT CABLE AND CABLE FAULT LOCATION

To Find Underground Cable With There
Exact Location

With Precise Length And Depth Of The
Cable

As Well As To Find The Fault In The
Underground Installed Cable



LIST OF SUCCESSFULLY COMPLETED PROJECTS

1. 36.72 Kw - Shell India Private Limited

(CSR Project)

2. 135 Kw - Gail India Limited

3. 100 Kw – Piplod Old Age Home

4. 100 Kw - Shri Ambikaniketan Temple

5. 55 Kw -Shri Ambikaniketan Trust, Surat

6. 80 Kw - Shri Gyan Bharti Trust Surat

7. 15.07 Kw - Pra Shri Sanjivani School

8. 700Kw – INC Work at Krishna Fashion ,Kim

9. 43.60 KW -Ramnath Ghela Smasanbhoomi

Trust

10. 9.70 Kw - B-building Crystal Avenue

11. 9.81 Kw - Sarpanch Shree Gram Panchayat Hazira

12. 14.82 Kw –Kala Mehtani Sheri,sagrampura

13. 5.02w - Sarpanch Gram Panchayat Vasva

14. 5.02 Kw – Suvali Primary School

15. 9.81 Kw – Karunasagar Mandir

16. 120 Kw - Ev Charger Installation At Pune Hinjwadi

OUR VALUABLE CUSTOMERS

1. Avenue Supermarts ltd
2. Solex Green Energy Private Limited
3. Rajesh Power Service Limited
4. Shell India Private Limited
5. Sunsnatch Solutions LLP
6. Climate Detox Renewable Private Limited
7. Solnce Green Energy LLP
8. Khanak Solar

CONTACT US



Website:- www.sprotonpower.com

Mail Id:- info@sprotonpower.com

Contact No:- 9033765370

Address:- 145, Orchid Harmony, Opp., Palanpore fire
Station, Pal Gaurav path Road, Surat-395009