

PROCESS CHILLER

Cooling Capacity : 7 Kw to 320 Kw



MATRIX

COOLING SYSTEM

NEXT GENERATION CHILLER TECHNOLOGY

Matrix Process Chiller

Matrix Process Chiller is designed to meet the needs of many applications that require stable working conditions with maximum quality and cleanliness of the cold process fluid. Matrix's brand-new compact, robust and reliable Water Chiller called "ProChill" is designed for industrial applications and manufactured with the highest quality and safety standards. ProChill is not only extremely compact and easy to use but also ensures an accurate control of water temperature.

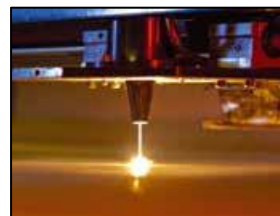
Highly Engineered and Compact Design

- Hydrophilic Fin Air Cooled Condenser
- Hermetic Scroll Compressor
- Thermostatic Expansion Valve
- R410A Refrigerant Gas
- High and Low-Pressure Gauge
- Primary Water Pressure Gauge
- Stainless Steel Evaporator
- Sight Glass
- PLC or Microprocessor Control

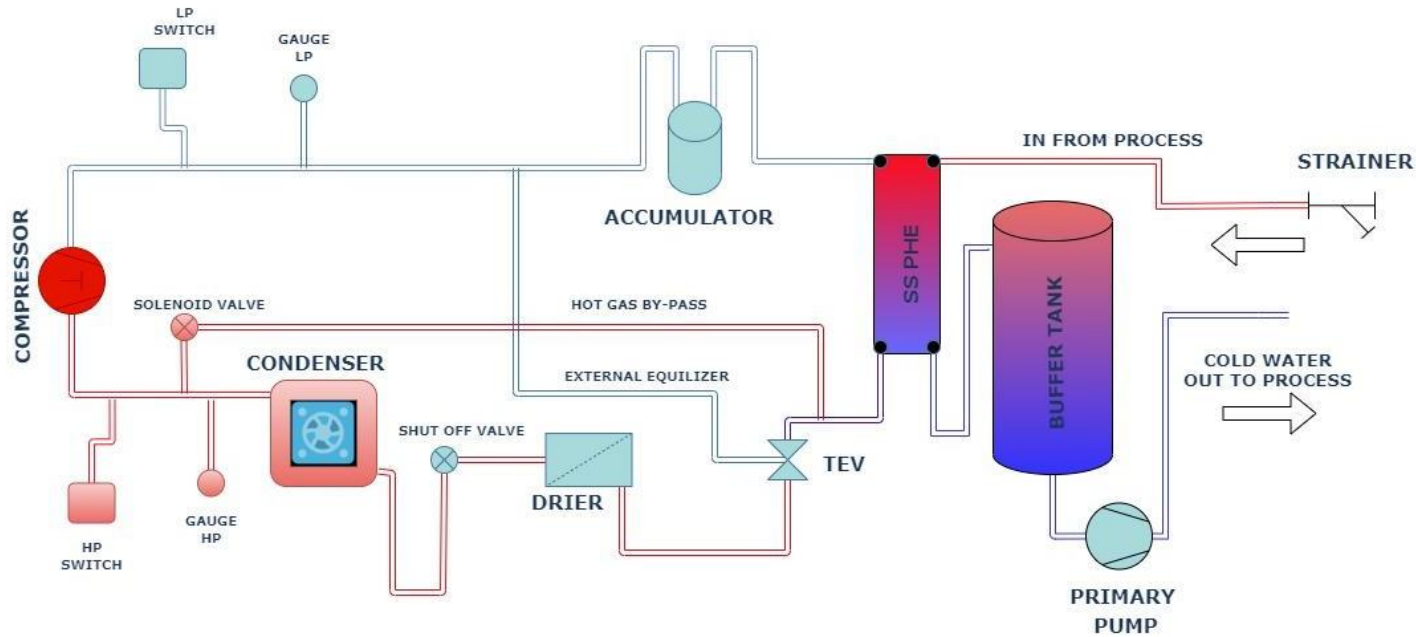


Application

- Food & Beverage Industries, Wineries, Dairies, Breweries, Bottling, Storage
- Plastic Industries-Injection, Extrusion, Blow Molding, thermoforming
- Laser Industry-Cutting, Welding, Profiling, Optics, Medical
- Chemical & Pharmaceutical Industry-Natural Gas, Jacketed vessels, polyurethane, laboratories, Healthcare, Petrochemical, Temperature Control
- Engineering Industry-Machine Tools, Welding Machine, Cutting, Profiling, Polishing, Rolling, Presses, Hydraulic Control-Oil Cooling, Heat Treatment



ProChill Working Principle



How it Works ?

As illustrated in the picture, the Thermal Liquid loop section operates as a closed circuit. The generated cold water is delivered to the application of the user's process by the water pump in ProChill. Once the cooling is completed, the cold water gets heated up and returns to ProChill in higher temperatures. Thereafter, the process water keeps on circulating through the close loop system in the same manner.

Refrigeration Circuit Main Component

Refrigerant Scroll Compressors

- Leading Refrigerant Compressors Brands
- Hermetic Scroll Compressor
- Durable and Long-Life
- Single or Multiple Compressor Operation



R410A Refrigerant



- Environment Friendly R410A Refrigerant Gas
- High Thermodynamic Properties
- Environmentally Considerate

Hydrophilic Condenser

- Enhance Durability
- Higher Heat Transfer
- Blue Saves from Corrosion
- Best Suitable for Coastal Area



Stainless Steel Evaporator

- Brazed Plate Stainless Steel
- Extremely Efficient
- High Heat Transfer Surface Area
- Compact Size



Integrated Fluid Pump

- Stainless Steel Body
- Special Seals for Process Fluids
- High Capacity Centrifugal Pump
- Maintenance free Operation



*“Customer satisfaction is
important to us”*



www.matrixcoolingsystem.in