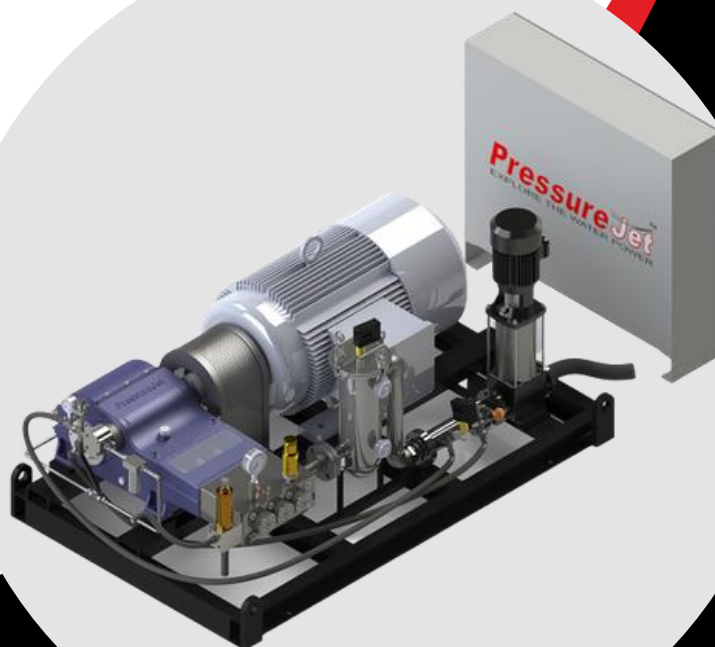


# HIGH PRESSURE HYDRO TEST SYSTEM



# ABOUT US

- PressureJet Systems Pvt. Ltd., founded in 1996 by Mr. Vishal Shah, has been offering best quality products to clients for more than 25 years.
- PressureJet systems Pvt. Ltd is the India's Largest manufacturer of high pressure triplex plunger pump.
- Our top priority is to provide high-quality products at affordable pricing.
- We are offering widest range of triplex plunger pumps from 60 bar to 1400 bar pressure for various Applications.



- We offer complete end to end solutions for Hydro jetting, Hydro Blasting, High pressure cleaning, Hydro-static pressure testing, Descaling, Sewer jetting, Fire-fighting, misting and fogging, paint and rust removal.
- We have stringent quality controls across all manufacturing, assembling, and testing processes.
- PressureJet has Global Presence in more than 50 Countries worldwide.

## RECOGNITIONS



Hawk Champion  
Distributor Since 2013



## IDEOLOGY



- At PressureJet, **transparency** is a fundamental principle that we follow. We feel proud to inform our customers about our products, fair pricing, and ethical business practices. In this digital era, there are no secrets in technology, and we rely on organized management and procedures. We assure complete openness and honesty about the quality of our services to help our customers compare and choose the best option.

## VISION



- "Our goal is to become a globally recognized brand for high pressure reciprocating plunger pumps and complete systems. As a professionally managed and governed Indian multinational, we aim to prioritize reliability, affordability, accessibility, and excellence in everything we do."
- "Our objective is to be the market leader in the USA, Germany, Japan & China."

## MISSION



- Be the **most technologically competent** Engineering Company by Designing, Developing, and manufacturing products which delivers **Highest** Value for Money and Reliability.
- Be the **most innovative** marketer to create an ecosystem where every buyer/consumer can evaluate PressureJet products and services to develop full confidence and buy with minimal efforts.
- We will **grow our personnel** through competency-based, systematic learning programs, as meritocracy is at the foundation of the business.



# BARE PUMP

## LIQUID END

### CRANK CASE

#### (FG 260 210-1993-GR)

- Crosshead bore, Single piece housing
- Ra value: 0.2  $\mu\text{m}$ , G.D. & T : 10  $\mu\text{m}$ .
- Testing: physical



### STUFFING BOX

#### (MARTENSITIC PH STAINLESS STEEL)

- RA VALUE : 0.4 MM
- G.D. & T : 10 micron accuracy
- TESTING : CHEMICAL AND UT TESTED



### PLUNGER SEAL

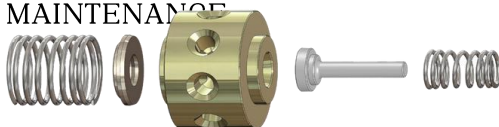
- Special Teflon base seal
- Moulded with low pressure seal for plunger cooling systems



### COMPLETE VALVE ASSEMBLY

#### (IMPORTED STAINLESS STEEL)

- VALVES MADE OF SPECIAL - HARDENED & ANTI CORROSION HARDSURFACE COATED FOR LONG LIFE.
- EASE OF ACCESS TO SUCTION-DISCHARGE VALVE ASSEMBLY FOR MAINTENANCE



### PLUNGER

#### (SOLID CERAMIC)

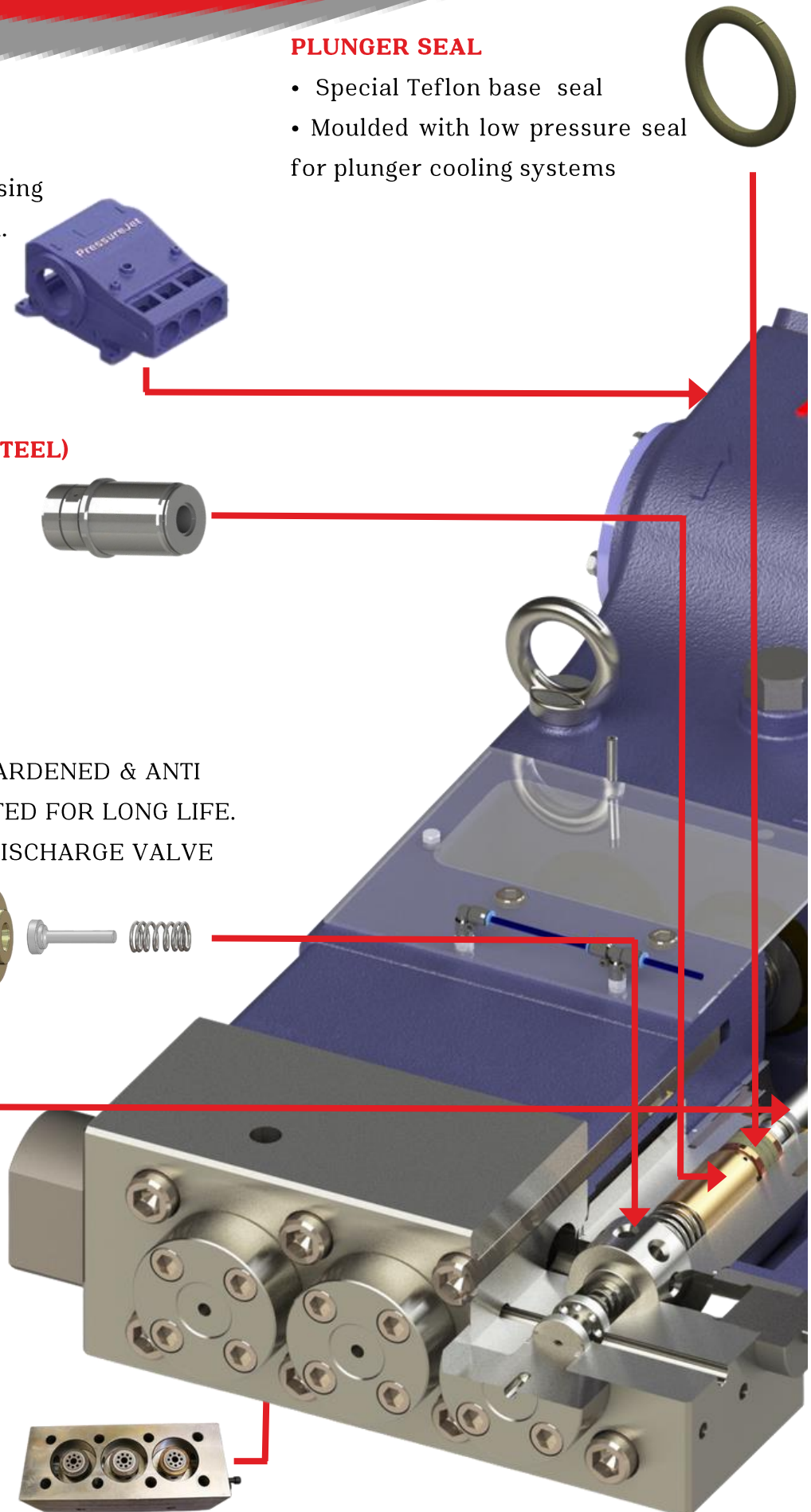
- RA VALUE : 0.05 MM
- G.D & T : 10 MM



### PUMP HEAD

#### (FORGED STAINLESS STEEL)

Testing: - chemical and UT test



# BARE PUMP POWER END

## CROSSHEAD ASSEMBLY (CAST DUCTILE IRON + STAINLESS STEEL)

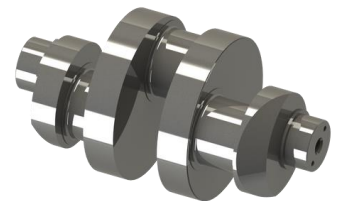
- Ra value: 0.2  $\mu\text{m}$
- G.D. & T : 10  $\mu\text{m}$
- Anti-corrosion treatment on a surface hardness of 50 HRC.

## WHITE METAL BEARING



## CONNECTING ROD (FORGED ALLOY STEEL)

- G.D. & T : 10  $\mu\text{m}$ .
- Heavy pin area construction, which added load strength.



## CRANKSHAFT (FORGED ALLOY STEEL)

- Ra value: 0.3  $\mu\text{m}$
- G.D. & T : 10  $\mu\text{m}$ .
- Raw material testing: physical test, chemical test, ultrasonic test, hardness test, and M.P.T. Test.

## BEARING

- Oversized for maximum life and load disbursement.
- Roller bearing enables it to handle 26% more load than other Pumps.



## PINION SHAFT

- ALLOY STEEL DOUBLE HELICAL, NITRIDE HARDENED AND PRECISION GROUND FOR EXTREMELY LONG LIFE WITH LOW NOISE AND DURABILITY. ACCURACY CLASS DIN-6.



# WHY PRESSUREJET?

## WELL EQUIPPED DESIGNING TEAM

- Passionate and innovative In house designing team
- Equipped with licenced 3-D SOLIDWORKS software.
- which Increases accuracy reduces costs overall
- 16+ dedicated staff for development of new products



## DUST-FREE ASSEMBLY - SAY NO TO BREAKDOWN

- Every pump is assembled under the monitored environment to ensuring the longer life of the pump. Dust free assembly will lead to minimal breakdown of pump in longer run.
- For ensuring proper working of pump we use, state-of-the-art computerized torque wrenches to tighten all bolts in your pump.

## ADVANCED IT

- PressureJet has Oracle EBS 12.1.3, to ensure best possible automation in accounting as well as procurement. 80% of pump spares have automatically generated purchase orders. Ultimately It reduces human intervention .
- PressureJet also has In house developed Datadoc software, which helps in smoothening business processes.



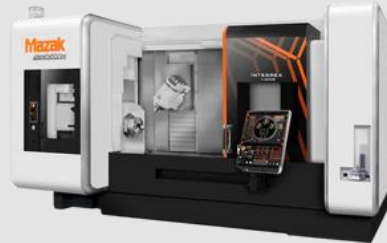


# WHY PRESSUREJET?

## QUALITY PRODUCTS MADE BY USING WORLD-CLASS MACHINERY



BMV60-TC24  
Chakra



Mazak INTEGERX -  
i200st 9 Axis Mill-Turn



KAFO BMC-3122  
Double Column

- Thanks to these machinery, we can offer unmatched 8-10 micron efficiency



Mazak HCN-  
6800 HMC



Doosan LYNX 220  
LSYC



CMM  
Machine

## WHY HIGH TECH MACHINE IMPORTANT FOR ACCURACY ?

- Designed for precision and consistency in their operations.
- They use advanced sensors, software, and precision components to measure, cut, drill, or perform other actions accurately.
- With smaller tolerances indicating higher accuracy.
- In High pressure pumps, even small deviations can cause product defects or safety issues.
- Essential for ensuring products meet required standards of quality and performance.



# WHY PRESSUREJET HYDRO TEST SYSTEMS



Photo of Diesel Engine Driven Skid Base System

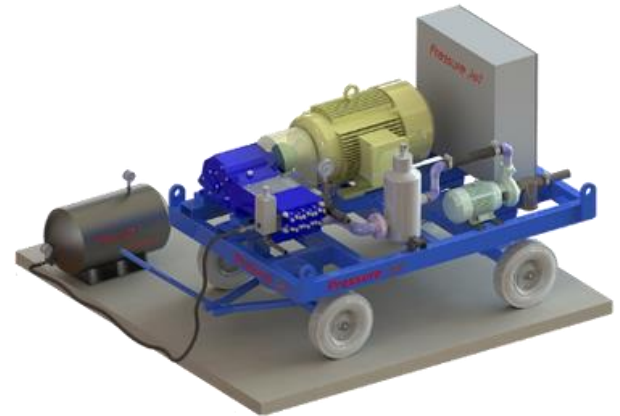
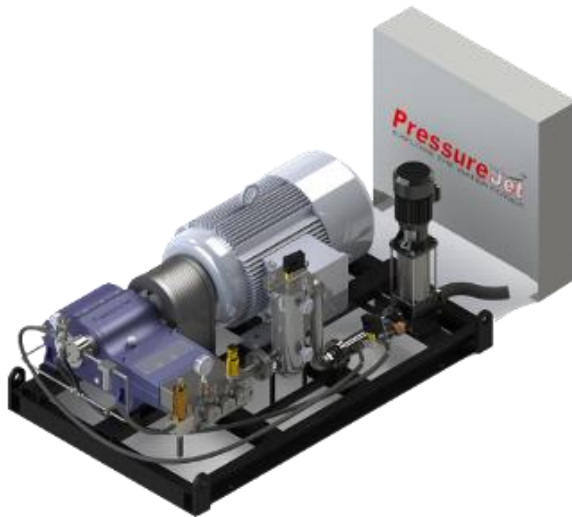
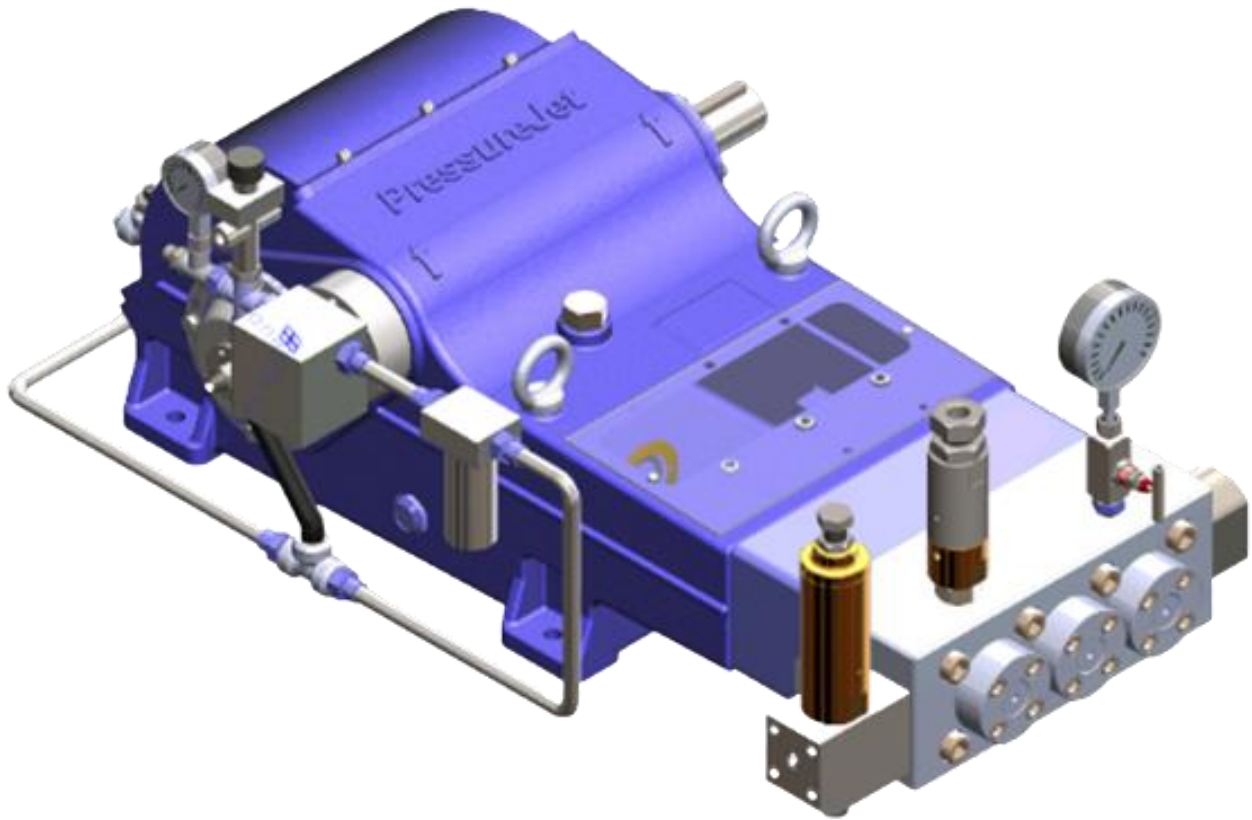


Photo of Electric Motor Driven Skid Base System

- All Systems are guaranteed for **low power consumption**, optimal connecting load, interchangeability of spares, minimum and easy maintenance and easy to operate by even a layman
- Proven Design to work at remote locations
- Reputed make **Diesel Engines (Kirloskar / Greaves)** with service availability worldwide.
- Reputed make **Electric Motors**(50/60 Hz, Standard, Flameproof, Explosion Proof) **Make BBL, Crompton, ABB, Siemens**
- Provision to install clutch/ Digital Stroke counter / Chart Recorder as per requirement.
- **Safety interlocks** to safeguard the pump in case of dry run and low oil.
- Filling pump available on request.
- **Consultation is available** for a selection of Specifications of the pump depending on the application
- Automations like **APC** (Auto pressure controller), **Computerised chart recorder, Controller to increase-hold-decrease** the pressure automatically as per requirement, digital pressure display



# KDD SERIES HYDRO TEST SYSTEMS



## SALIENT FEATURES

- Field proven design.
- Forged S.S. pump head construction with high strength with Incorporated gear box.
- Pressure packing design with integrated cooling systems for long life of seal.
- In line suction / delivery Valve.
- Splash lubrication and Forced feed lubrication system. (For more details, please [click here](#))
- Manufactured on state-of-the-art machinery.
- Available direct couple driven.

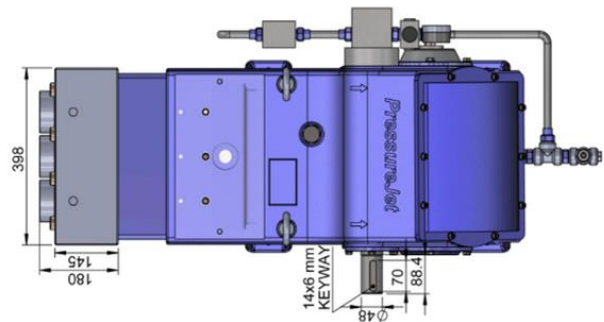
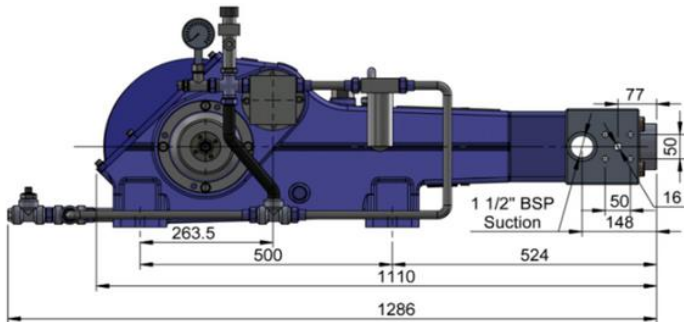
## TECHNICAL SPECIFICATIONS

- Stroke length: 95 mm & 75 mm
- Max. plunger speed: 1.58 m/sec. @ 500 SPM
- Plunger force: 43 KN (4396 kgf)
- Inlet pressure min.-max.: 5-7 Bar
- Oil type & capacity: Gear oil 220, 12 Litres.
- Max. permissible oil temp.: Room temp.+ 50 °C
- Max. inlet water temp.: 5 °C to 43 °C
- Inlet connection: 1 ½" BSPF
- Outlet connection: ½" BSPF

# KDD SERIES HYDRO TEST SYSTEMS

Model	SPM	Flow Rate in LPM (GPM)	Max. Rated Pressure in Bar (PSI)		
			100 HP	120 HP	150 HP
KDD-20-75	435	33 (8.72)	1400 (20305)	-	-
KDD-20-95	500	50 (13.21)	900 (13053)	1050 (15228)	1400 (20305)
KDD-22-75	435	40 (10.57)	1050 (15228)	-	-
KDD-22-95	500	60 (15.85)	750 (10877)	880 (12763)	1100 (15954)
KDD-24-95	500	70 (18.49)	650 (9427)	750 (10877)	950 (13778)
KDD-26-95	500	82 (21.66)	500 (7252)	650 (9427)	800 (11603)
KDD-28-95	500	95 (25.09)	450 (6527)	525 (7614)	660 (9572)
KDD-30-95	500	110 (29.06)	380 (5511)	460 (6672)	575 (8340)

Note: All flow is based on 100% volumetric efficiency. Actual flow will be  $\geq 95\%$ .

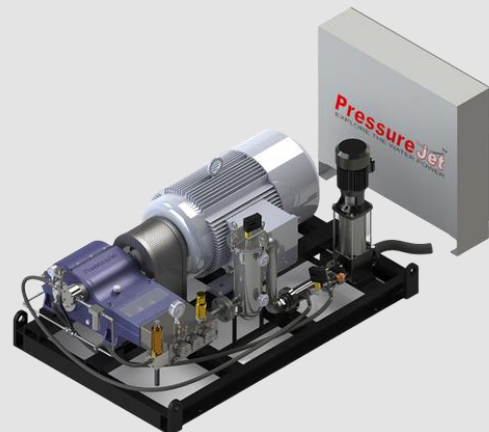


## DIMENSIONS OF KDD SERIES BARE PUMP (IN MM)

### PUMP SYSTEM

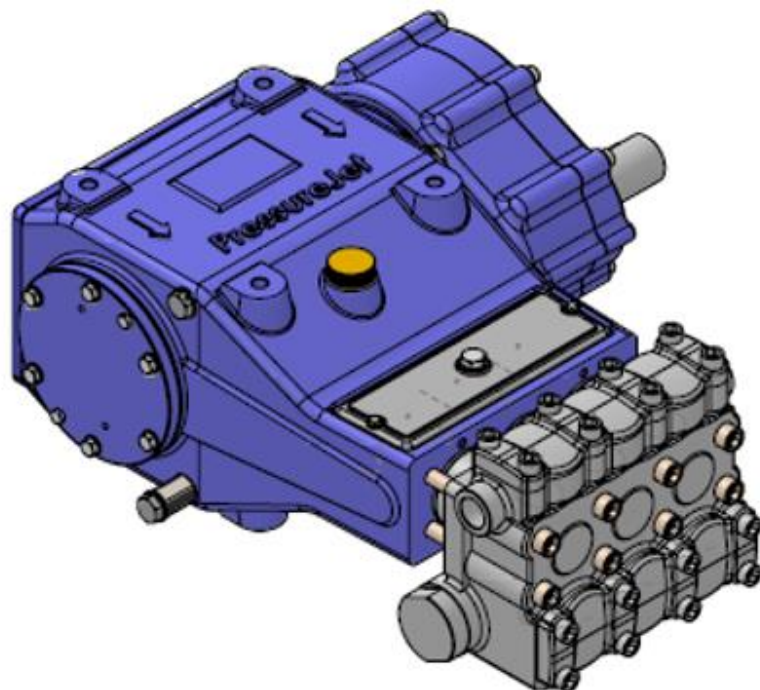


TROLLEY MOUNTED SYSTEM



FRAME MOUNTED SYSTEM

# VA SERIES HYDRO TEST SYSTEMS



## TECHNICAL SPECIFICATION

- Stroke length: 57 mm
- Max. plunger speed: 1.52 m/sec. @ 800 SPM
- Plunger force: 2072 kgf)
- Inlet pressure min.-max.: 2-3 Bar (Booster pump flow require minimum 1.5 times of rating flow)
- Oil type: Gear oil 220
- Oil capacity: 8 Ltrs.
- Max. permissible oil temp.: Room temp.+ 50 °C
- Max. inlet water temp.: 5 °C to 60 °C
- Inlet connection: 2" BSPF
- Outlet connection: 1" BSPF

## SALIENT FEATURES

- Field-proven design. Easy field maintenance.
- Casting stainless steel pump head construction with high strength.
- Rigorously subjected to full load testing.
- Manufactured on state-of-the-art machinery.
- Light in weight & heavy-duty construction with intermediate duty model.
- Splash lubrication.
- Both sides mounting available.
- The pump design is suitable for an inbuilt gearbox & hydraulic motor-driven system.



# VA SERIES HYDRO TEST SYSTEMS

## VA-57 MODELS WITH 1500 RPM MOTOR

Model	SPM	Flow Rate in LPM (GPM)	Max. Rated Pressure in Bar (PSI)		
			40 HP	50 HP	60 HP
VA-57-36	500	87 (22.9)	175 (2538)	205 (2973)	-
VA-57-36	600	104 (27.4)	140 (2030)	180 (2610)	205 (2973)
VA-57-40	500	107 (28.2)	140 (2030)	165 (2393)	-
VA-57-40	600	129 (34.7)	120 (1740)	145 (2103)	165 (2393)
VA-57-36	800	139 (36.7)	110 (1590)	130 (1885)	-
VA-57-45	600	163 (43.1)	95 (1377)	115 (1660)	130 (1885)
VA-57-50	500	168 (44.3)	90 (1300)	105 (1522)	-
VA-57-40	800	172 (45.4)	85 (1233)	105 (1522)	130 (1885)
VA-57-50	600	200 (52.8)	75 (1085)	90 (1300)	105 (1522)

## VA-57 MODELS WITH 1800 RPM MOTOR

Model	SPM	Flow Rate in LPM (GPM)	Max. Rated Pressure in Bar (PSI)		
			40 HP	50 HP	60 HP
VA-57-36	600	104 (27.4)	140 (2030)	180 (2610)	205 (2973)
VA-57-40	600	129 (34.7)	120 (1740)	145 (2103)	165 (2393)
VA-57-45	600	163 (43.1)	95 (1377)	115 (1660)	130 (1885)
VA-57-50	600	200 (52.8)	75 (1085)	90 (1300)	105 (1522)

## PUMP SYSTEM



TROLLEY MOUNTED SYSTEM



FRAME MOUNTED SYSTEM

# VC SERIES HYDRO TEST SYSTEMS



## TECHNICAL SPECIFICATION

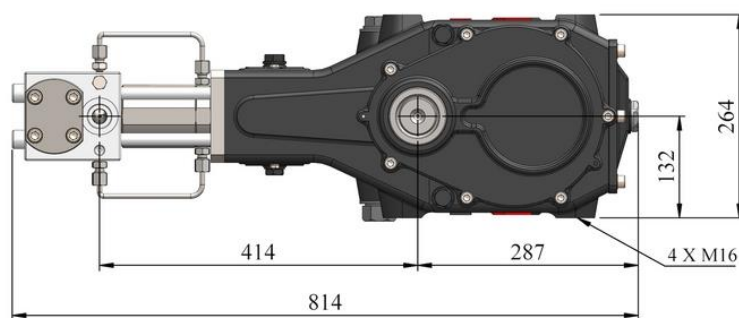
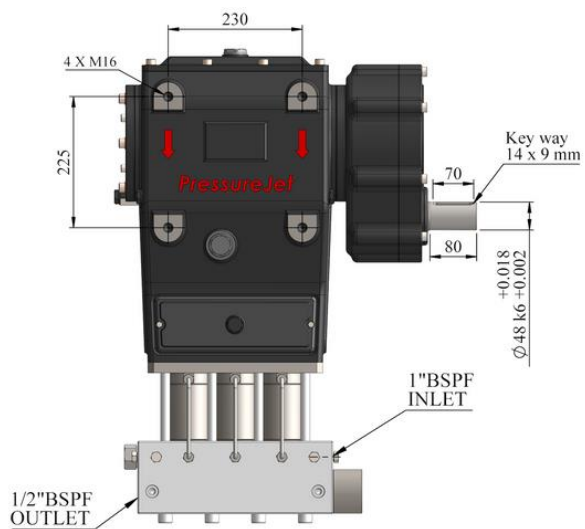
- Plunger Stroke : 57 mm
- Max. PlungerSpeed : 1.14 m/sec. @ 600 spm
- Plunger Force : 23.5 KN (2400 Kgf)
- Required Inlet Pressure : 2-3 bar
- Required Inlet Flowrate : BoosterPump flow requiremin. 2 times of ratedflow rate
- Lubrication Oil Type : SAE - 220
- Lubrication Oil Capacity : 12 liter
- Max. LiquidTemp. : 50 ° C (122 ° F)
- Discharge Connection : 3/4" BSPF
- Suction Connection : 1" BSPF
- Bare-Shaft Pump Weight : 235 Kg. Approx.
- Bare-Shaft Pump Overall Dim. (LxBxH) : 814 x 602 x 264 mm

## SALIENT FEATURES

- Field proven design.
- Rigorously Subjected to full load testing.
- Light in weight & Heavy duty construction with Heavy duty model.
- Splash lubrication 7 easy Maintenance.
- Both side mounting available.
- Pressure packing design with integrated cooling system for long life of seal.
- Forged Stainless steel Pump Head construction with high strength.
- In line Suction - Discharge Valve.

# VC SERIES HYDRO TEST SYSTEMS

MODEL	PLUNGER DIAMETER ( MM)	SPM	FLOW RATE IN LPM (GPM)	MAX. RATED PRESSURE IN BAR (PSI)	
				60 HP	50 HP
VC-57-600-14	14	600	15 (3.96)	1400	1300
VC-57-600-16	16	600	22 (5.81)	1050	850
VC-57-600-18	18	600	28 (7.4)	860	750
VC-57-600-20	20	600	35 (9.25)	740	600

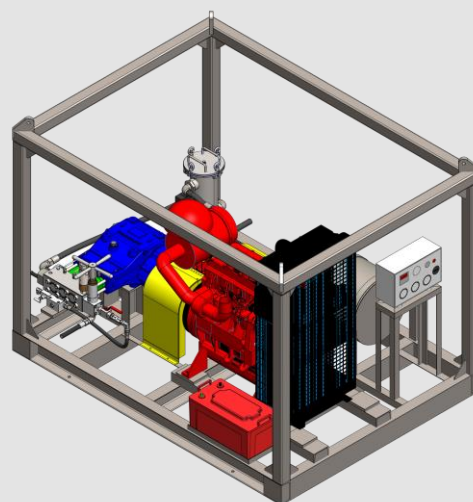


DIMENSIONS OF VC SERIES BARE PUMP (IN MM)

## PUMP SYSTEM



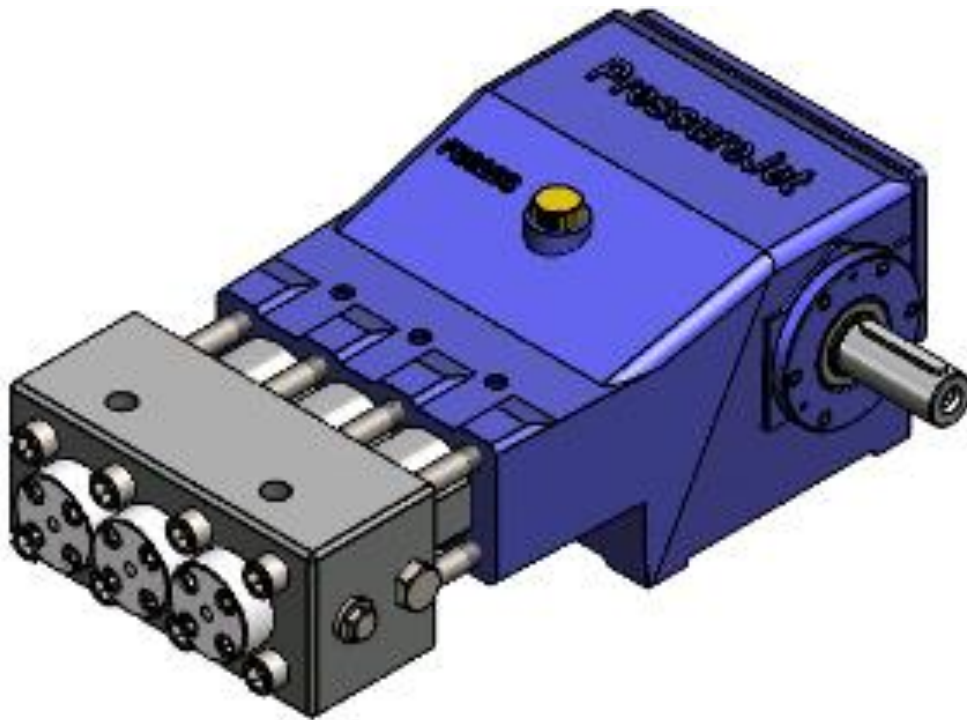
TROLLEY MOUNTED SYSTEM



FRAME MOUNTED SYSTEM



# PC SERIES HYDRO TEST SYSTEMS



## TECHNICAL SPECIFICATION

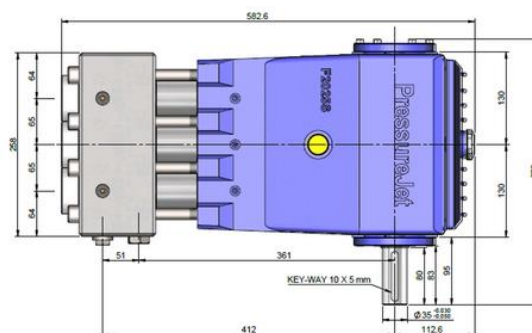
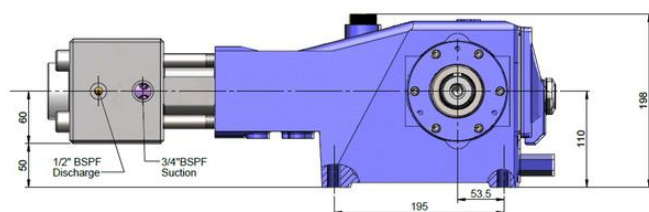
- Stroke length: 40 mm
- Max. plunger speed: 1.26 m/sec. @ 950 SPM
- Plunger force: 12.45 KN (1271 kgf)
- Inlet pressure min.-max.: 2-3 Bar (Booster pump flow require minimum 1.5 times of rating flow)
- Oil type: Gear oil 220
- Oil capacity: 4 Ltrs.
- Max. permissible oil temp.: Room temp.+ 50 °C
- Max. inlet water temp.: 5 °C to 60 °C
- Inlet connection:  $\frac{3}{4}$  " BSPF
- Outlet connection:  $\frac{1}{2}$  " BSPF
- Weight of bare pump is around 85 Kg approx.

## SALIENT FEATURES

- Field-proven design. Easy field maintenance.
- Pump Head is made of high corrosion-resistant Forged Stainless Steel.
- Rigorously subjected to full load testing.
- Manufactured on state-of-the-art machinery.
- Heavy-duty construction, light in weight.
- PC series triplex plunger pumps are available in three versions.
- Splash lubrication.
- Available with Gear drive arrangement.
- Available in trolley-mounted, skid/frame-mounted & road-going trolley configurations with electric motor or diesel engine.

## PC SERIES HYDRO TEST SYSTEMS

Model	SPM	Flow Rate in LPM (GPM)	Max. Rated Pressure in Bar (PSI)				
			15 HP	20 HP	25 HP	30 HP	40 HP
PC-12	420	5 (1.32)	1000 (14503)	1200 (17404)	-	-	-
PC-12	540	7 (1.84)	800 (11603)	1000 (14503)	1200 (17404)	-	-
PC-12	730	9 (2.37)	600 (8702)	800 (11603)	1000 (14503)	1200 (17404)	-
PC-14	730	13 (3.43)	-	-	600 (8702)	800 (11603)	1000 (14503)
PC-16	730	17 (4.49)	-	-	-	600 (8702)	750 (10877)



### DIMENSIONS OF PC SERIES BARE PUMP (IN MM)

## PUMP SYSTEM

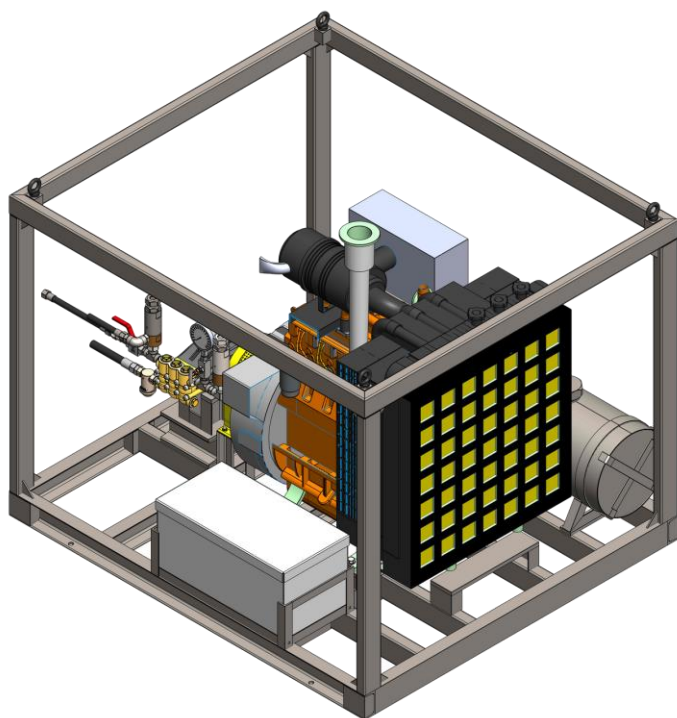


## TROLLEY MOUNTED SYSTEM



## FRAME MOUNTED SYSTEM

# HW SERIES HYDRO TEST SYSTEMS



## SALIENT FEATURES

- Field proven design.
- Forged Brass fluid-end construction with high strength.
- Rigorously subjected to full load testing.
- Manufactured on state-of-the-art machinery.
- Light in weight & heavy duty construction with continuous duty model.
- Splash lubrication.
- Available as direct couple driven.
- Easy Field Maintenance.

## PUMP MODELS WITH 50HZ ELECTRIC MOTOR (1450 RPM)

MODEL	SPM	FLOW RATE IN LPM (GPM)	MAX. RATED PRESSURE IN BAR (PSI)			
			10 HP	15 HP	30 HP	40 HP
NPM 1525 R		15 (4)	250	-	-	-
PX 1735 IR	-	17 (4.5)	-	350	-	-
PX 2150 IR	-	21 (5.5)	-	-	500	-
MPX 3050R	-	30 (8)	-	-	-	500

## PUMP MODELS WITH 60HZ ELECTRIC MOTOR (1750 RPM)

MODEL	SPM	FLOW RATE IN LPM	MAX. RATED PRESSURE IN BAR (PSI)			
			12.5 HP	20 HP	30 HP	46 HP
NPM 1525 R		18 (4.7)	250	-	-	-
PX 1735 IR	-	20 (5.4)	-	350	-	-
PX 2150 IR	-	25 (6.7)	-	-	500	-
MPX 3050R	-	36 (9.6)	-	-	-	500



# HYDRO TEST ACCESSORIES



## PRESSURE REGULATING VALVE

- Pressure Regulating Valve Regulates output pressure as required
- On the standby mode PRV Bypasses excess water
- Pressure range up to 1400 bar - 20,000 PSI.
- Flow rate range up to 450 LPM - 118.87 GPM.
- We have in house designed Pressure Regulating valve which built for ultra high pressure bare pump

## SAFETY VALVE

- It prevents major accidents from occurring in case of problem arising out of high pressure built up in line.
- Ensures safety for operator and Provides over-pressure protection
- Intentionally designed weak part to avoid major loss
- Pressure range up to 1400 bar - 20,000 PSI.
- Flow rate range up to 450 LPM - 118.87 GPM.



## PRESSURE GAUGE

- Available in various sizes as per requirement.
- Stainless steel case filled with glycerin to offer protection against harsh environments.
- Approx. 2 times pump operating pressure
- Easy-to-read dial
- With needle valve

# HYDRO TEST ACCESSORIES

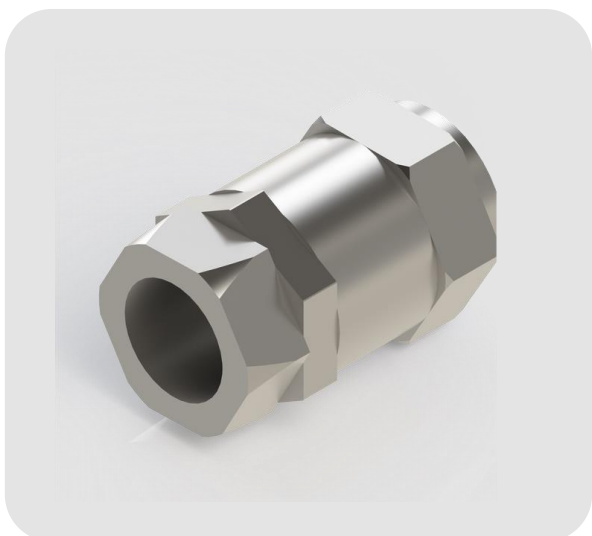
## BALL VALVE

- Ball Valve is attached to the outlet point of the liquid end of the pump.
- Its function is to control the flow of discharge from the pump.
- For the safety of man and machine, the ball valve should have a rated pressure of 1.5x the rated pressure of the pump.



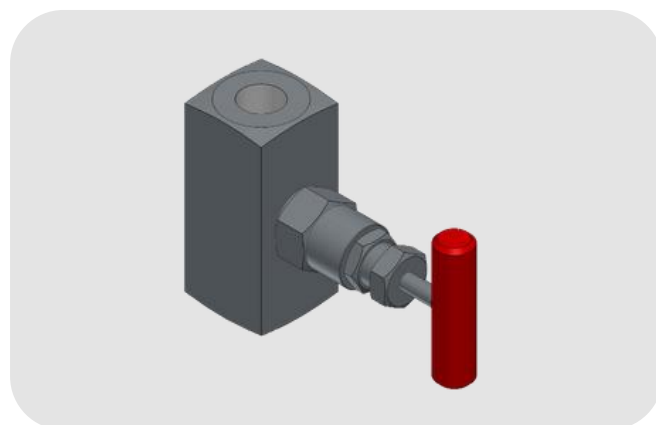
## NON RETURN VALVE

- A non-return valve allows the fluid to flow in one direction only.
- It is used to ensure that the fluid flows in the right direction in the pipe.
- Reverse flow can cause a problem in the operation of the high-pressure system. Therefore PressureJet uses the right non-return valve to ensure hassle free system operation.



## NEEDLE VALVE

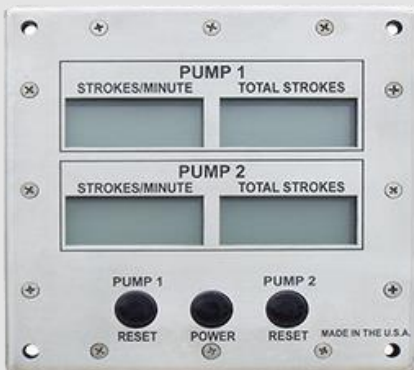
The needle valve is used for the safety of the Pressure gauge. It helps to isolate the pressure gauge once require pressure is set in system.



# HYDRO TEST ACCESSORIES

## CHART RECORDER

- Chart recorder is use to record increase in pressure of pump with respect to time. It is possible to output of pressure V/s Time chart in soft copy.



## STEP COUNTER

- The step counter is used to measure no. of strokes of pump by which it is possible to determine flow rate of pump while performing Hydro test.

## PRESSURE SWITCH

- The Pressure Switch displays the pressure of the booster pump or water pressure in the pump inlet line.
- If the pressure is not optimal, then the pressure switch will signal the control panel to stop the system in order to ensure safety.

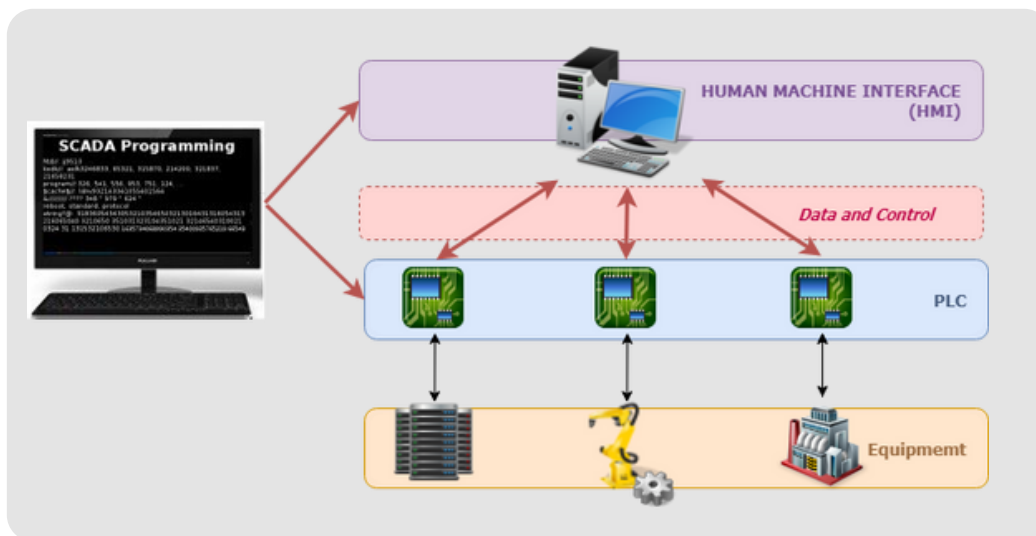




# HYDRO TEST ACCESSORIES

## PLC

- PLC is used to monitor working of Hydro test Pump. It is possible to control your Hydro test when PLC is used with VFD and SCADA. You can increase, Hold and decrease pressure of pump by programing in PLC.



## SCADA

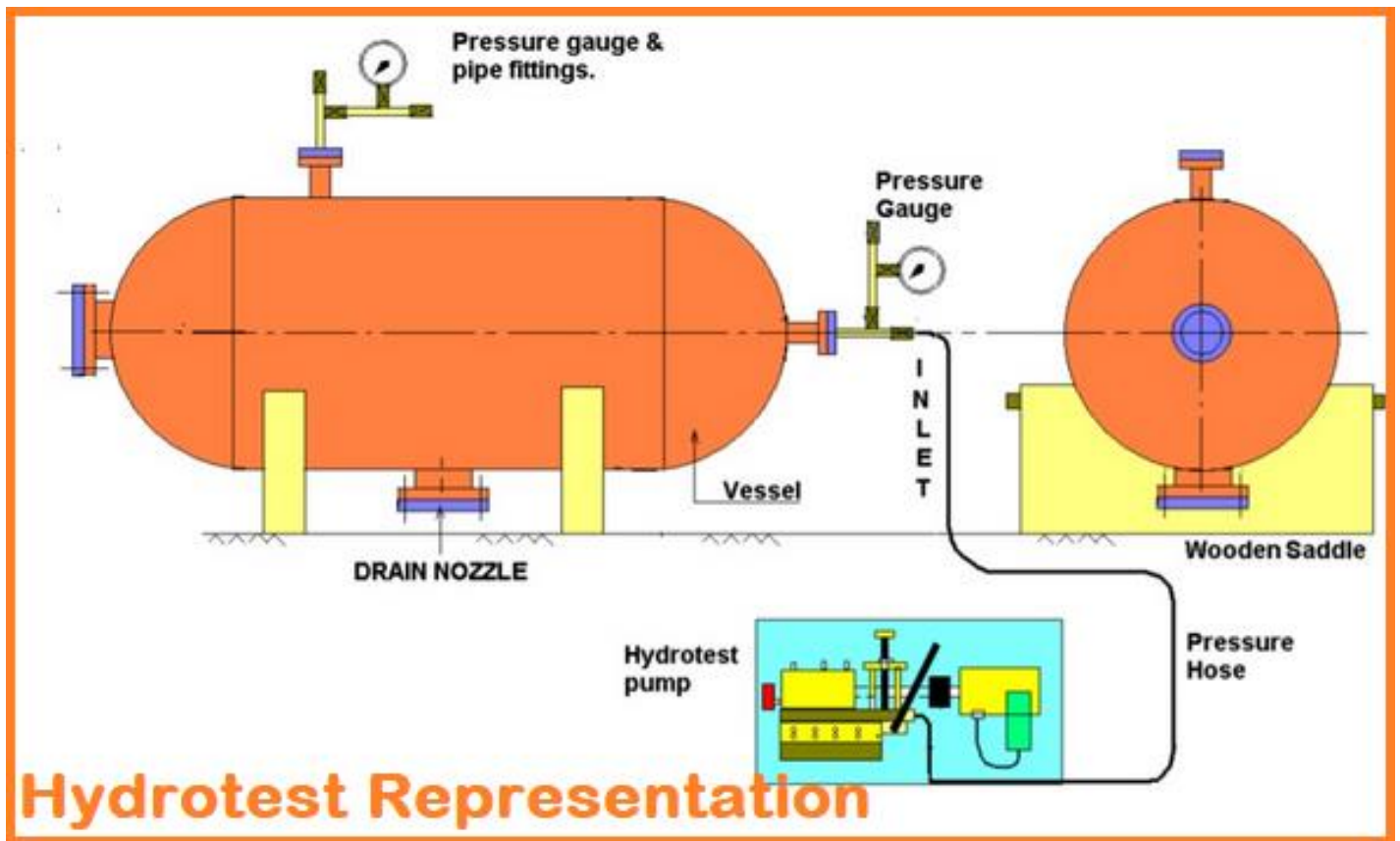
- SCADA is used to control, record, recover, and Analyse Hydro Test Data. You can operate the Hydro Test system remotely using SCADA.

## AUTO PRESSURE CONTROL

- APC (Automatic pressure controller) sets the pressure digitally and the system shuts off once desired pressure level is attained.



# HYDRO TEST ACCESSORIES



FOR MORE INFORMATION ABOUT HYDRO TEST AND ITS ACCESSORIES, PLEASE SCAN GIVEN QR CODE



# FOR MORE INFORMATION

## MORE ABOUT PRESSUREJET

We are the largest manufacturer of high pressure triplex plunger pump. For virtual factory tour scan the below mentioned QR code.



## COMMISSIONING

We provide on-site commissioning of your pump upon your request. Have a look at our commissioning policy for more information, scan the QR code.



## MAINTENANCE & TROUBLE SHOOTING

We ensure hassle-free troubleshooting of your pump with a lot of information available on our website. Don't want to read the information? Head out to our website for videos. Still facing problem? Contact us.



## WARRANTIES & GUARANTEES

Our standard warranty is 1-year from date of supply or 1000 working hours whichever is earlier. Find out all our warranty policies and conditions in detail. Scan the QR code!



# SATISFIED CLIENTS

5000+ HAPPY CLIENTS, GLOBAL PRESENCE IN 50+ COUNTRIES



TATA STEEL LIMITED



MASTEK ENGINEERING PVT LTD



POWER TRANSMISSION LIMITED



FOR PURCHASE ORDER REFERRAL PLEASE SCAN  
GIVEN QR CODE





## GLOBAL EXPORT PRESENCE IN 50+ COUNTRIES



**PressureJet**<sup>®</sup>  
EXPLORE THE WATER POWER

21-24, PanchRatna Industrial Estate Near  
Oad Village, Paldi Kankaj, Satpanth Mandir  
Pirana Rd, Ahmedabad, Gujarat 382427



[www.pressurejet.com](http://www.pressurejet.com) ✉ [sales@pressurejet.com](mailto:sales@pressurejet.com) ☎ +91 9376022358

**LOCATION**