



**CREST**  
ULTRASONICS  
THE INNOVATION CONSTANT™

AUTOMATED AQUEOUS & SEMI-AQUEOUS  
PRECISION CLEANING SYSTEMS  
The Power of Ultrasonics



# PRECISION CLEANING SYSTEMS (PCS) Tailor Made For Your Needs...

## Custom Automated Cleaning Systems

Crest Ultrasonics provides custom automated cleaning systems for a wide range of industrial precision cleaning applications including microelectronics, pharmaceutical and precision optics to name a few. Custom designed to meet your exact cleaning requirements.

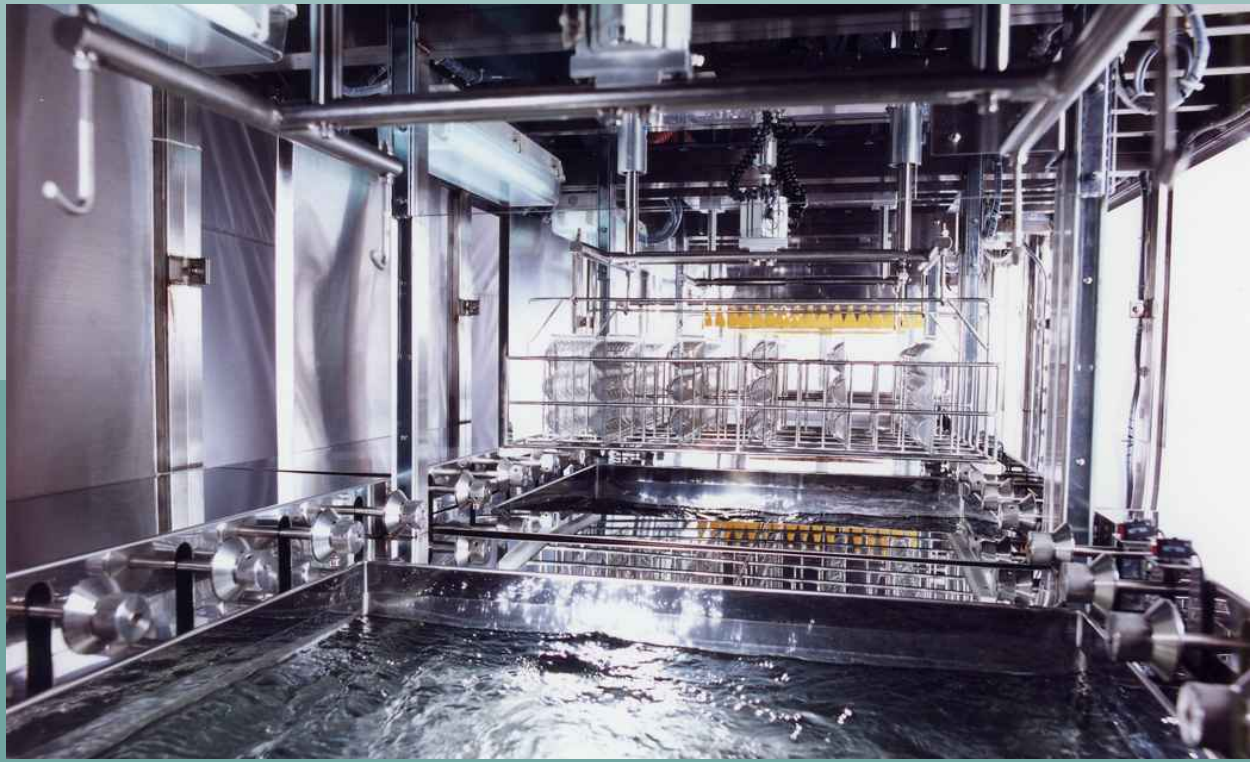


Making cleaning systems that work better, faster, safer, more efficiently and effectively is a challenge Crest has met over and over.

Crest is uniquely qualified to offer you a choice of customized automated precision cleaning systems to meet your exact cleaning requirements. The systems are unequalled in their capacity to handle high volume production and, if required, can meet Class 10 or 100 clean room standards (Class 10 or 100 cleanroom on site).

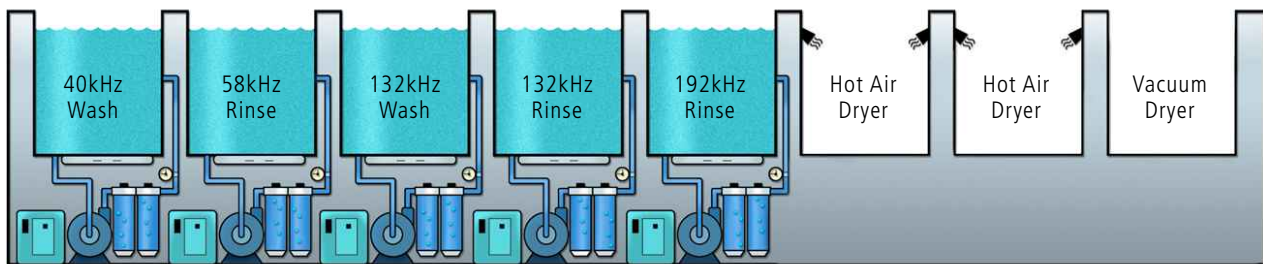
We also provide an outstanding level of service. A Crest engineer will examine your requirements, evaluate your cleaning needs, design the system, test it, supervise its installation, and ensure that the process that worked in the lab works in full scale production.

At Crest, we're not only dedicated to developing innovative cleaning systems, but also to creating safe environmentally sound ones as well. It's the kind of commitment that you expect and get from the leader in the custom automated precision cleaning systems.



Let us design your submicron cleaning system around our family of patented ceramically enhanced ultrasonics unmatched by any other cleaning technology.

Progressive high-frequency ultrasonic cleaning systems are proving extremely effective in submicron particle removal. Below is a sample of an eight-station cleaning system:



Drying stations, automation, and environmental enclosures can be added as needed.  
Class 10 or 100 cleanroom on site.

## RIGIBOT SYSTEMS

### Versatility, Ease of Operation, Consistency, Affordability

RIGIBOTS are Crest's line of proprietary robots designed to provide outstanding flexibility and versatility in multiprocess applications. Essentially, RIGIBOTS are a "pick and place" system that offers you the ability to use them for a wide variety of different processes with only simple programming changes. RIGIBOTS are available in three sizes to meet specific load capacity requirements. And, they are available with a variety of options for maximum efficiency to meet your special requirements.

#### The Rigibot CTS-250 & CTS-500

Rigibot™ Automation Systems can reduce or eliminate the need for operator handling, providing a safer work environment. Automation also improves process consistency and efficiency.

##### Features and Benefits

- Crash Protection
- Field Installable
- PLC Controlled
- Graphical Color Touch Screen Interface

PLC controlled two-axis Automation system with user-friendly graphical color touch screen operator interface can be field-mounted to existing cleaning benches or supplied with new systems. The PLC controls all process parameters and functions, tracks work through multiple process programs and can provide critical process data for offline analysis.

#### The Rigibot CTS-250

The CTS-250 has a 25lb. Lifting capacity and is clean room compatible.

Clean room compatible belt drive and precision bearings.

Counter-top mounted, small footprint.



#### The Rigibot CTS-500

Rigibots are Crest's line of proprietary robots designed to provide outstanding flexibility and versatility in multiprocess applications. Rigibots are "pick and place" systems that offer the ability to be used for a wide variety of different processes. If we don't have an automated cleaning system that meets your needs, we'll customize one that does.

##### Features and Benefits

- Crash Protection
- Field Installable
- PLC Controlled
- Graphical Color Touch Screen Interface



## The Rigibot CTS-1000 & CTS-1500

### Features and Benefits

- Designed for heavy capacities. The CTS-1000 handles loads up to 100lbs. and CTS-1500 handles loads up to 150lbs.
- Multiprocessor operator, easily programmed via keypad for multifunction processes.
- Systems run multiple programs simultaneously - resulting in high throughput and programming versatility.
- Accuracy in placement and high reliability.
- Non-contaminating rigid cantilever design.
- Clean room compatible.
- PC compatible.

## The Rigibot CTS-2000

### Features and Benefits

- Upgrades such as the highest load capacity in the industry.
- Increasing processing speed.
- Smaller footprint.
- Several new control options.
- Full protected control of process and system parameters.
- Field retrofitted to any existing system.

# THE OPTIMUM CONSOLE™

## Aqueous & Semi-Aqueous Precision Cleaning System



### The Optimum Console™

is a versatile ultrasonic precision cleaning system designed to clean a wide variety of industrial components. It is available in aqueous or semi-aqueous process models to solve today's high-tech cleaning challenges. Engineered with a compact, space-saving design and rugged, stainless steel tubular frame, the Optimum Console™ is a cost-effective solution to industrial cleaning applications. It offers the convenience of an all-in-one, wash-rinse-dry design with a single point facility connection for easy installation. It's a user-friendly, manually operated console available with automation upon purchase or to be added at a later date.

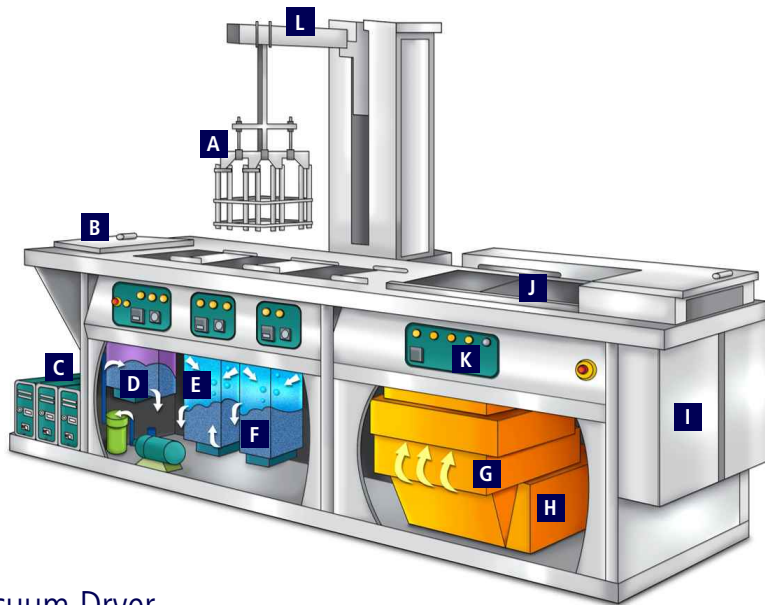
### SYSTEMS CONFIGURATIONS

Available in 3, 4 or 5 station designs. Standard tank sizes range from 10" (25.4 cm) W x 14" (35.6 cm) L x 10" (25.4 cm) D to 24" (61 cm) W x 36" (91 cm) L x 20" (50.8 cm) D. Custom tank sizes are available. The three station Optimum Console™ is a wash-rinse-dry system designed for most general cleaning applications. For precision cleaning applications, the four-station console is a wash-rinse-rinse-dry system ideal for cleaning at the microscopic level. The five-station wash-wash-rinse-rinse-dry system is configured for the Dual Process™ or semi-aqueous cleaning applications. Custom configurations are available.

## System Features

### Model 0C4 with optional CTS-1000 Rigibot Automated Cantilevered Transport

- A** CUSTOM FIXTURED BASKETS  
configured for ideal cleaning of intricate parts.
- B** LOAD STATION (OPTIONAL)  
with basket sensors to automatically activate transport and process.
- C** GENERATORS  
provide constant power and True-Sweep™ frequency cleaning action. Available in 25, 40, 58, 68, 132 and 192kHz, designed for specific cleaning applications.
- D** ULTRASONIC WASH  
provides high intensity heated ultrasonic wash. Filtered recirculation with overflow weir removes oil and particles.
- E** TANKS  
are constructed of 316L bright annealed stainless steel.
- F** HEATED ULTRASONIC RINSE  
provides a 2-stage reverse flow spray-over immersion conserving space and water usage. Maximizes rinses for spot-free drying.
- G** HIGH EFFICIENCY RECIRCULATING HOT AIR DRYER  
has a unique air flow design to dry parts quickly. Compressed air blow-off allows for speed and efficiency.
- H** DRYER FILTER CHAMBER  
optional HEPA-type with industrial prefilter.
- I** POWER BOX  
is conveniently located for easy access.
- J** SLIDE DRYER COVER  
with optional automatic activation.
- K** OPERATOR CONTROLS  
are designed for easy operator use. Includes electronically timed ultrasonics, PID temperature controllers, and illuminated indicator switches.
- L** RIGIBOT™ AUTOMATED CANTILEVER TRANSPORT SYSTEM (optional) Rugged and reliable. Provides consistent processing for industrial and cleanroom applications.



## Optional-Vacuum Dryer

### Features

- Simple design - for ease of use, low maintenance, safety
- Fast cycle times
- Automatic cycle - for consistently dry parts - time after time
- Complete spot-free drying, even for parts with complex geometries
- Stainless steel materials of construction for durability and cleanliness
- Power sliding cover
- Chamber has strip heater with thermostat to heat the chamber
- Quartz heat lamps used to warm parts and freezing

### Optional Features

- Custom size and configuration
- Oil coalescing and special filtration systems
- Rigibot™ cantilever transports
- RoTumbler™ rotational process baskets (standard and custom basket)
- Closed-loop rinse water systems

Model	Tank Dimensions L x W x D inches centimeters	Console Dimensions L x W x D inches centimetres	Ultrasonic Power Per Station	Heated Ultrasonic Wash	Heated Ultrasonic Rinse	Dryer Heat/CFM
OC3-1014-HE	10 x 14 x 10 25.4 x 35.6 x 25.4	66 x 34 x 38 167.6 x 86.4 x 96.5	500 W	1 kW	2 kW	5 kW / 800
OC4-1014-HE	10 x 14 x 10 25.4 x 35.6 x 25.4	80 x 34 x 38 203.2 x 86.4 x 96.5	500 W	1 kW	2 kW	5 kW / 800
OC5-1014-HE	10 x 14 x 10 25.4 x 35.6 x 25.4	95 x 34 x 38 241.3 x 86.4 x 96.5	500 W	1 kW	2 kW	5 kW / 800
OC3-1218-HE	12 x 18 x 12 30.5 x 45.7 x 30.5	72 x 38 x 39 182.9 x 96.5 x 99.1	1000 W	2 kW	3 kW	7.5 kW / 800
OC4-1218-HE	12 x 18 x 12 30.5 x 45.7 x 30.5	89 x 38 x 39 226.1 x 96.5 x 99.1	1000 W	2 kW	3 kW	7.5 kW / 800
OC5-1218-HE	12 x 18 x 12 30.5 x 45.7 x 30.5	106 x 38 x 39 269.2 x 96.5 x 99.1	1000 W	2 kW	3 kW	7.5 kW / 800
OC3-1622-HE	16 x 22 x 16 40.6 x 55.9 x 40.6	88 x 43 x 44 223.5 x 109.2 x 111.8	1000 W	4 kW	4 kW	10 kW / 1000
OC4-1622-HE	16 x 22 x 16 40.6 x 55.9 x 40.6	110 x 43 x 44 279.4 x 109.2 x 111.8	1000 W	4 kW	4 kW	10 kW / 1000
OC5-1622-HE	16 x 22 x 16 40.6 x 55.9 x 40.6	132 x 43 x 44 335.2 x 109.2 x 111.8	1000 W	4 kW	4 kW	10 kW / 1000
OC3-1826-HE	18 x 26 x 18 45.7 x 66 x 45.7	95 x 46 x 44 241.3 x 86.4 x 96.5	1500 W	4 kW	6 kW	12.5 kW / 1000
OC4-1826-HE	18 x 26 x 18 45.7 x 66 x 45.7	119 x 46 x 44 302.3 x 116.8 x 111.8	1500 W	4 kW	6 kW	12.5 kW / 1000
OC5-1826-HE	18 x 26 x 18 45.7 x 66 x 45.7	141 x 46 x 44 358.1 x 116.8 x 111.8	1500 W	4 kW	6 kW	12.5 kW / 1000
OC3-2436-HE	24 x 36 x 20 61 x 91.4 x 50.8	113 x 56 x 48 287 x 142.2 x 121.9	3500 W	8 kW	12 kW	20 kW / 1000
OC4-2436-HE	24 x 36 x 20 61 x 91.4 x 50.8	145 x 56 x 48 368.3 x 142.2 x 121.9	3500 W	8 kW	12 kW	20 kW / 1000
OC5-2436-HE	24 x 36 x 20 61 x 91.4 x 50.8	175 x 56 x 48 444.5 x 142.2 x 121.9	3500 W	8 kW	12 kW	20 kW / 1000

**Notes:**

- Standard power requirement:
  - 208/240/480 volts three-phase optional (transformer required for 480 v)
  - 380/415 volts three-phase optional (transformer required for 480 v)
- Dimensions do not include load/unload tables for automation or 15" (38 cm) external generator rack
- Ultrasonic frequency ranges from 25 kHz, 40 kHz, 58 kHz, 68 kHz, 132 kHz & 192 kHz
- For higher frequencies i.e. megasonics, send us your enquiries.

# THE OPTIMUM CONSOLE JUNIOR™

## Your Cost-effective Cleaning Solution

### Four-Station Wash-Rinse-Rinse-Dry System

**Crest Ultrasonics' Optimum Console Junior™** is a four-station ultrasonic cleaning system designed to clean many types of industrial components using a wide variety of aqueous cleaning chemistries. With the compact, cost-effective Junior, you can eliminate the use of CFCs and solvents without sacrificing cleaning performance. It is versatile for use in many applications and ideal for cleaning a wide variety of metal, plastic, and glass components as well as composites.

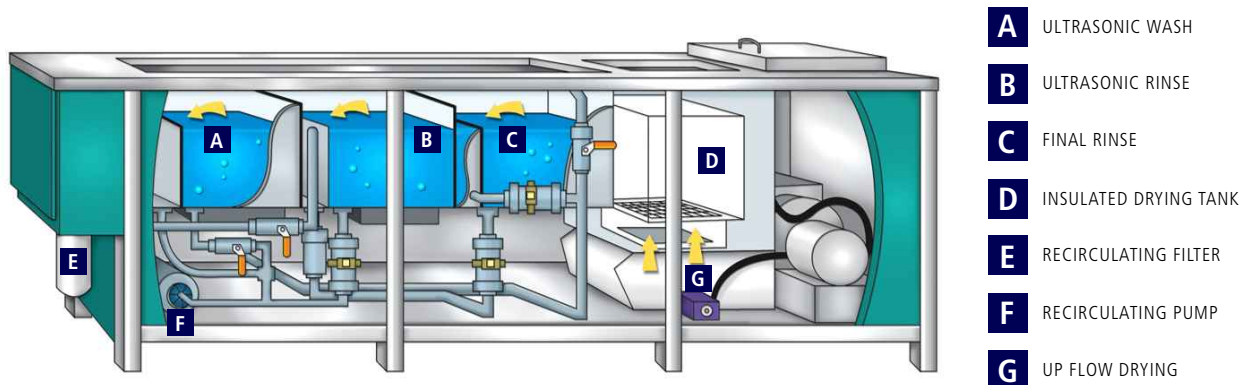


### POPULAR OPTIONS

**Oil Coalescers** - For cleaning applications that require ongoing removal of oil and other contaminants without interrupting the processing. Custom sized to fit system.

**Automated materials handling systems** - For loads up to 250 lbs (114 kgs), Crest's famous Rigibot™ materials handling systems are smooth, fast, efficient, and affordable. Custom sized to fit cleaning system.

**Other options include:** Timers on the ultrasonic stations, lift-off covers, and hand-held spray wand.



# THE OPTIMUM CONSOLE JUNIOR™

## You Can Ultrasonically Clean Your Parts Cost-effectively

### SYSTEM FEATURES AND BENEFITS

Stainless steel tanks	Corrosion resistance and extended life span.
Space-saving small footprint	Maximum utilization of space and easy replacement of vapor degreasers or optimization of your present cleaning method
Ultrasonic wash and rinse tanks are fitted with high quality Vibra-Bar™ transducers which produce 40 kHz Tru-Sweep™ ultrasonic frequency.	Ideal cleaning power for most applications. Provides consistent and effective cleaning and lifting of soils away from small recesses and grooves. 25 kHz, 40kHz, 58 kHz, 68 kHz, 132 kHz & 192 kHz frequencies are also available.
Full-length overflow weir for wash tank and cascade rinse tank configurations	Helps remove contaminants from the wash and rinse tanks to maintain a cleaner solution in all process tanks.
High flow recirculation / filtration system on wash tank	Particulate contaminants are filtered continuously improving cleaning consistently.
High efficiency recirculating hot air dryer	Quick and thorough drying.
Thermostatically-controlled heated tanks	Improves cleaning efficiency and speeds drying times.
Fully plumbed and valved for single point utility connections	Quick and easy installation.
Stainless steel frame with powder-coated epoxy liftoff panel cabinetry	Attractive and corrosion resistant. Easy front access for maintenance.

## Product Information

Applies to our standard four-station wash-rinse-rinse-dry model

Model	Internal Tank Dimensions L x W x D inches / centimeters	Console Dimensions L x W x D inches / centimeters	Ultrasonic Wash Power & Frequency*	Ultrasonic Rinse Power & Frequency*	Dryer Heat (Watts) & Recirc. (CFM)
Ocj-1014	10 x 14 x 16 10" liquid depth 25.4 x 35.6 40.6	82 x 28 x 41 208.3 x 71.1 104.1	500 Watts 40 kHz	500 Watts 40 kHz	3750 Watts / 800CFM
Ocj-1218	12 x 18 x 16 10" liquid depth 30.5 x 45.7 x 40.6	90 x 32 x 41 228.6 x 81.3 x 104.1	1000 Watts 40 kHz	1000 Watts 40 kHz	5000 Watts / 800 CFM
Ocj-1622	10 x 14 x 16 13.5" liquid depth 25.4 x 35.6 40.6	105 x 36 x 41 226.7 x 91.4 x 104.1	1000 Watts 40 kHz	1000 Watts 40 kHz	12500 Watts / 800 CFM
Ocj-1826	18 x 26 x 20 14" liquid depth 45.7 x 66 x 50.8	114 x 40 x 41 289.6 x 101.6 x 104.1	1500 Watts 40 kHz	500 Watts 40 kHz	12500 Watts / 1000 CFM
Ocj-2424	24 x 24 x 20 16" liquid depth 61 x 61 x 50.8	155 x 38 x 41 292.1 x 96.5 x 104.1	2000 Watts 40 kHz	2000 Watts 40 kHz	12500 Watts / 1000 CFM

### Notes:

- 25 kHz, 58 kHz, 68 kHz, 132 kHz & 192 kHz as optional
- Standard power requirement:
  - 208 / 240 / 408 volts three-phase optional (transformer required for 480 v)
  - 380 / 415 volts three-phase optional (transformer required for 480 v)

### Optional features:

- Automation System • Timer • Oil Coalescer Package • Lift-off Covers Hand
- Hand Spray Wand • Pump-out Station for Drainage • Closed-loop Water Treatment Systems

## CREST ULTRASONICS INDIA PVT. LTD

Plot No. 185, Ground Floor,  
Functional Industrial Estate, Patparganj, Delhi-110092, India

Phone: +91-98100 33631

E-mail: [info@crestultrasonicsindia.com](mailto:info@crestultrasonicsindia.com)

Website: [www.crestultrasonicsindia.com](http://www.crestultrasonicsindia.com)

### Crest Ultrasonics

Scotch Road,  
P.O. Box 7266, Trenton,  
NJ 08628 USA.

Tel: (609) 883 4000

Fax: (609) 883 6452

Toll Free: 1-800-992 7378

E-mail: [info@crest-ultrasonics.com](mailto:info@crest-ultrasonics.com)

Website: [www.crest-ultrasonics.com](http://www.crest-ultrasonics.com)



Crest Ultrasonics Manufacturing Centre in Penang, Malaysia. • Tel: +604-507 0018 • Fax: +604-507 0020 • [www.act.crestm.com](http://www.act.crestm.com)

CORPORATE HEADQUARTERS **USA** MANUFACTURING LOCATIONS **USA • MALAYSIA • CHINA • SWITZERLAND • GERMANY • UNITED KINGDOM • FRANCE**  
SALE & SERVICE OFFICES **THAILAND • JAPAN • KOREA • PHILIPPINES • SINGAPORE • FRANCE • CHINA • INDIA** AGENTS **USA • HONG KONG**  
• **AUSTRALIA • TAIWAN • KOREA**

**INTERNATIONAL LOCATIONS** **Uthe California** 252 Great Mall Parkway, Milpitas, CA 95035 USA. Tel: 408-945 8894 Fax: 408-945 1556  
**Advanced Ceramics Technology (ACT), Malaysia** Plot 121, Jalan Perusahaan, Bukit Tengah Industrial Park, 14000 Bukit Mertajam, Penang, Malaysia. Tel: 604-507 0018 Fax: 604-507 0020 **Crest Ultrasonics Thailand** SV City 916/270 Rama III Rd, Banpongpan, Yannawa, Bangkok, 10120 Thailand. Tel: 662-682 6506 Fax: 662-682 6507 **Crest Ultrasonics Singapore** 66 Tannery Lane #01-04D, Sindo Building, Singapore 347805. Tel: 65-741 8266 Fax: 65-741 1939  
**Crest Ultrasonics Philippines** Unit 703 Richville Corporate Center, Madrigal Business Park Muntinlupa, Philippines. Tel: 00632-710 4447, 00632-711 1277 Fax: 00632-771 1303 **Uthe Japan** 1-8-15 Nakagawa Kohoku-Ku Yokohama, 223 Japan. Tel: 81-45 912 7911 Fax: 81-45 912 7921 **CC Hydrosonics Ltd.** Italstyle Factory, Cambridge Road, Harlow, Essex CM20 2HE, U.K. Tel: 44-1279 418 942 Fax: 44-1279 453 926 **Martin Walter Ultraschalltechnik AG** Hardstraße 13, D-75334 Straubenhardt, Germany. Tel: 49-708 279 1501 Fax: 49-708 279 1515 **Rinco Ultrasonics AG** Industriestrasse 4 / P.O. Box CH - 8590 Romanshorn, Switzerland. Tel: 41-71 461 4100 Fax: 41-71 466 4101 **Crest Ultrasonics Shanghai** Ground Floor West, North Block, Wei Xin Tian Xian Building, No. 56 Zhong Xin Road, Suzhou Industrial Park, Jiangsu, China, Postcode: 215021. Tel: +86 512 8818 4907 Fax: +86 512 8818 4909 **Crest Ultrasonics India (P) Limited** First Floor, C-11, Functional Industrial Estate, Patparganj, Delhi 110092, India. Tel: +91-11-22164532, +91-9810033631 **Australia / Taiwan / Korea:** Please enquire for Crest Ultrasonic representative contact @ 604-507 0018