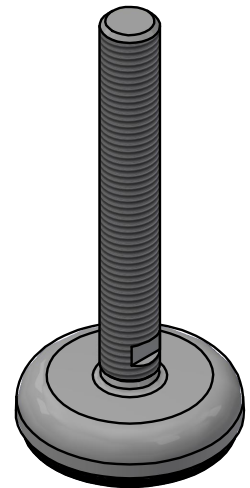
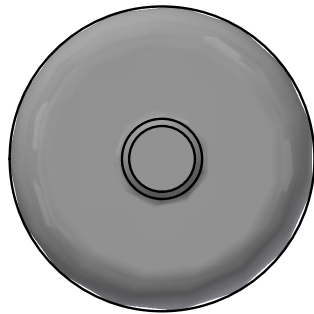


RUBBER UNDERLAY NITRILE RUBBER WITH 65-70 HARDNESS



MATERIAL : SS 304  
WEIGHT CAPACITY : 500 KG

REV. NO	DESCRIPTION			DATE	APPD. BY
TITLE:- BASE 60 X 16-100				MODEL:-	
UNSPECIFIED TOLERANCE AS PER IS 2102-1969				1) ALL SHARP EDGES & BURRS SHOULD BE REMOVED	
LINER TOLERANCE				2) ALL SHARP EDGES (UNSPECIFIED) 1X45°	
AGULAR TOLERANCE				3) ALL DIMENSIONS ARE IN MM UNLESS SPECIFIED	
BASIC DIM.				4) DIMENSION FURNISHED IN BRACKET [ ] ARE FOR REF. ONLY.	
TOL.				SURFACE TREATMENT:-	
0 TO 6mm		±0.1mm		MACHINING SYMBOL	
6 TO 30mm		±0.2mm		MATERIAL	
30 TO 120mm		±0.3mm		WEIGHT	
120 TO 315mm		±0.5mm		N/A	
315 TO 1000mm		±0.8mm		DRN.	
1000 TO 2000mm		±1.2mm		SIGN	
				DATE	
				SHEET:-	
				SCALE:-	
ASHWIN ELEMACH				PARTCODE:-	
SHED NO. 37, DINUBHAI ESTATE, TRIKAMPURA PATIA, PHASE-3,G.I.D.C. VATVA, AHMEDABAD - 382445, GUJRAT, INDIA				316016100	