



# Goldfinch

## Agrosurf Pvt. Ltd.

---

*Performance That Blends  
Science with Agriculture...*

# EMULSIFIERS FOR AGROCHEMICALS

Emulsifiers are essential formulation aids in agrochemical pesticide products, enabling the effective dispersion of active ingredients in water and ensuring stable, homogeneous spray solutions. They play a critical role in maintaining formulation integrity, improving dilution stability, and delivering consistent performance during application.

GOLDFINCH AGROSURF offers a range of high-performance emulsifiers that designed to meet the demanding requirements of modern pesticide formulations. Our emulsifiers offer excellent compatibility with a wide spectrum of active ingredients and solvents, enhance physical and storage stability.

Developed to support reliable efficacy and regulatory compliance, our emulsifiers help formulators to create robust, efficient, and high-quality pesticides for diverse agricultural needs.

GOLDFINCH AGROSURF's range of emulsifiers aimed at:



EC (Emulsifiable Concentrate)



SL (Soluble Liquid Concentrate)



WP (Wettable Powder)



WDG (Water Dispersible Granule)



SC (Suspension Concentrate)



EW (Emulsion in Water)



# Benefits of using Goldfinch's Emulsifiers

At GOLDFINCH AGROSURF PVT LTD, we specialize in high-performance agro-pesticide emulsifiers designed to enhance formulation stability, efficiency, and field performance. Our solutions support crop protection manufacturers in delivering consistent and reliable products.



## Superior Emulsification Performance

Our emulsifiers ensure stable and uniform emulsions, improving dispersion and preventing phase separation in agrochemical formulations.



## Enhanced Pesticide Effectiveness

Optimized emulsification leads to better active ingredient spread and absorption, resulting in improved pest control and higher crop protection efficiency.



## Wide Compatibility

Our products are compatible with a broad range of active ingredients, solvents, and formulations, making them suitable for insecticides, herbicides, and fungicides.



## Consistent Quality Standards

We follow stringent quality control processes to deliver reliable, batch-to-batch consistency that meets domestic and international agrochemical standards.



## Formulation Stability & Shelf Life

GOLDFINCH emulsifiers enhance formulation stability, reducing sedimentation and extending product shelf life under varied storage conditions.



## Cost-Effective Solutions

High efficiency at low dosage helps reduce formulation costs while maintaining superior performance.



## Technical Expertise & Support

Our experienced technical team provides formulation guidance and customized emulsifier solutions tailored to specific customer requirements.

## Our Emulsifier's USP

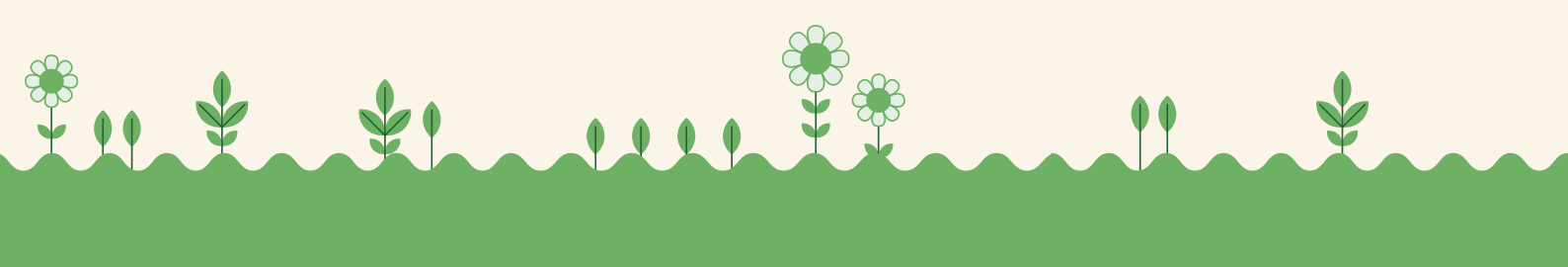


### Low Inclusion Rates

High-potency synergistic blends that allow for lower dosage rates, reducing your overall cost per litre of finished product.

### Optimized Viscosity Control

Ensures smooth flow and easy pouring, improving the end-user experience for farmers.



## AGRO EMULSIFIERS FOR EC Formulations

Active Toxicants	Product		Solvent	Recommended	
				Ratio	Dosage
Alphacypermethrin 10% EC	G-Crop GFE 15	G-Crop GFE 25	C9/Xylene	50:50	7%
Bifenthrin 10% EC	G-Crop GFE 15	G-Crop GFE 25	C9/Xylene	35:65	7%
Chlorpyrifos 20% EC	G-Crop GFE 15	G-Crop GFE 25	C9/Xylene	30:70	5%
Chlorpyrifos 48% EC	G-Crop GFE 15	G-Crop GFE 25	C9/Xylene	25:75	8%
Chlorpyrifos 50% + Cyper 5% EC	G-Crop GFE 15	G-Crop GFE 25	C9/Xylene	65:35	8%
Cypermethrin 10% EC	G-Crop GFE 15	G-Crop GFE 25	C9/Xylene	30:70	7%
Deltacypermethrin 5% EC	G-Crop GFE 15	G-Crop GFE 25	C9/Xylene	40:60	7%
Fenvelrate 20% EC	G-Crop GFE 15	G-Crop GFE 25	C9/Xylene	65:35	7%
Lambdacyhalothrin 2.5% EC	G-Crop GFE 15	G-Crop GFE 25	C9/Xylene	35:65	6%
Lambdacyhalothrin 5% EC	G-Crop GFE 15	G-Crop GFE 25	C9/Xylene	40:60	7%
Permethrin 25% EC	G-Crop GFE 15	G-Crop GFE 25	C9/Xylene	60:40	6%
Profenophos 40% + Cyper 5% EC	G-Crop GFE 15	G-Crop GFE 25	C9/Xylene	65:35	7%
Profenophos 50% EC	G-Crop GFE 15	G-Crop GFE 25	C9/Xylene	70:30	9%
Quinalphos 25% EC	G-Crop GFE 15	G-Crop GFE 25	C9/Xylene	25:75	8%
Alphacypermethrin 5% EC	G-Crop EC 45	G-Crop EC 60	C9/Xylene	60:40	8%
Chlorpyrifos 50% EC	G-Crop EC 45	G-Crop EC 60	C9/Xylene	25:75	8%
Cypermethrin 5% EC	G-Crop EC 45	G-Crop EC 60	C9/Xylene	65:35	8%
Cypermethrin 25% EC	G-Crop EC 45	G-Crop EC 60	C9/Xylene	40:60	8%
Deltacypermethrin 2.5% EC	G-Crop EC 45	G-Crop EC 60	C9/Xylene	30:70	8%
Oxadiazon 25% EC	G-Crop EC 45	G-Crop EC 60	C9/Xylene	60:40	6%
Permethrin 50% EC	G-Crop EC 45	G-Crop EC 60	C9/Xylene	35:65	8%
Pretilachlor 50% EC	G-Crop EC 45	G-Crop EC 60	C9/Xylene	40:60	10%
Propargite 57% EC	G-Crop EC 45	G-Crop EC 60	C9/Xylene	50:50	12%
Buprofezin 10% EC	G-Crop 25	G-Crop 50	C9/Xylene	35:65	7%
Butachlor 60% EC	G-Crop 25	G-Crop 50	C9/Xylene	80:20	8%
Methyl Parathion 50% EC	G-Crop 25	G-Crop 50	C9/Xylene	80:20	8%
Ethion 50% EC	G-Crop 40	G-Crop 45	C9/Xylene	50:50	6%
Butachlor 50% EC	G-Crop 400	G-Crop 500	C9/Xylene	50:50	8%
Abamectin 1.9% EC	G-Crop ANB	G-Crop AMB	C9/Xylene	50:50	8%
Emamectin Benzoate 1.9% EC	G-Crop ANB	G-Crop AMB	C9/Xylene	50:50	8%



## AGRO EMULSIFIERS FOR EC Formulations

Active Toxicants	Product		Solvent	Recommended	
				Ratio	Dosage
2,4 D Amine 48% EC	G-Crop DAN 30	G-Crop DAN 70	C9/Xylene	50:50	8%
2,4 D Amine 72% EC	G-Crop DAN 30	G-Crop DAN 70	C9/Xylene	60:40	10%
2,4 D Ethyl Ester 38% EC	G-Crop DAN 30	G-Crop DAN 70	C9/Xylene	40:60	8%
Hexaconazole 5% EC	G-Crop HX 15	G-Crop HX 30	C9/Xylene	50:50	8%
Hexythiazox 5.45% EC	G-Crop HX 15	G-Crop HX 30	C9/Xylene	40:60	8%
Propiconazole 25% EC	G-Crop HX 15	G-Crop HX 30	C9/Xylene	50:50	8%
Dimethoate 30% EC	G-Crop LD 10	G-Crop LD 20	C9/Xylene	80:20	10%
Dimethoate 40% EC	G-Crop LD 10	G-Crop LD 20	C9/Xylene	85:15	10%
Malathion 50% EC	G-Crop ML 50	G-Crop ML 60	C9/Xylene	60:40	6%
Malathion 57% EC	G-Crop ML 50	G-Crop ML 60	C9/Xylene	60:40	7%
Pendimethalin 30% EC	G-Crop PDM 35	G-Crop PDM 65	C9/Xylene	60:40	8%
Pendimethalin 40% EC	G-Crop PDM 35	G-Crop PDM 65	C9/Xylene	60:40	8%
Pendimethalin 50% EC	G-Crop PDM 35	G-Crop PDM 65	C9/Xylene	55:45	8%
Propanil 35% EC	G-Crop PL 50	G-Crop PL 100	C9/Xylene	70:30	12%
Propanil 36% EC	G-Crop PL 50	G-Crop PL 100	C9/Xylene	90:10	15%
Propanil 48% EC	G-Crop PL 50	G-Crop PL 100	C9/Xylene	90:10	15%
Propanil 27.5%+Butachlor 27.5% EC	G-Crop PL 50	G-Crop PL 100	C9/Xylene	90:10	20%
Propanil 35% + Butachlor 35% EC	G-Crop PL 50	G-Crop PL 100	C9/Xylene	90:10	20%
Propanil 36% + Trichlopyr 7.2% EC	G-Crop PL 50	G-Crop PL 100	C9/Xylene	90:10	20%
Quizalofop 5% EC	G-Crop QZP 350	G-Crop QZP 450	C9/Xylene	60:40	18%
Temephos 50% EC	G-Crop TP 50	G-Crop TP 60	C9/Xylene	50:50	8%
Nitrobenze 20% EC	G-Crop NBZ		C9/Xylene	100	25%
N neem Oil	G-Crop NM		C9/Xylene	100	10%

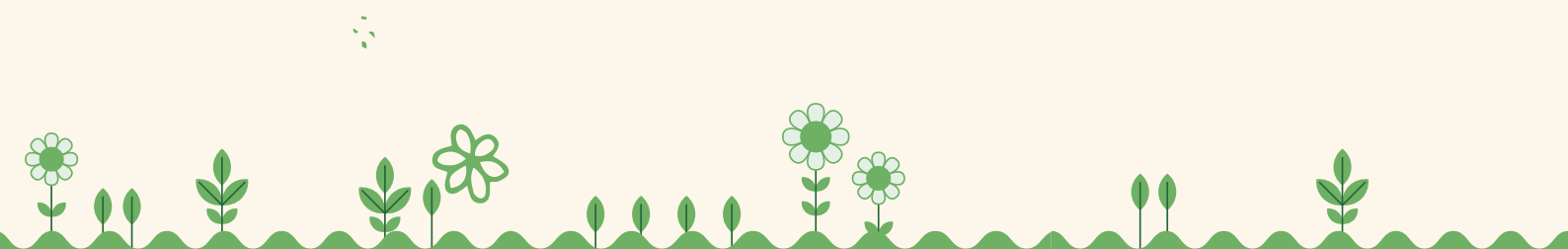
“  
**High-Performance  
 Emulsifiers for Stable  
 EC Formulations...**  
 ”

*Our range of anionic and non-ionic surfactant blends is specifically designed for Emulsifiable Concentrate (EC) formulations. Whether you are working with traditional aromatic solvents or modern green solvents, ensure a robust, fine-particle emulsion that translates to better field efficacy and shelf-life.*



## Agro Emulsifier for SC (Suspension Concentrate)

Active Toxicants	Product		Recommended	
			Ratio	Dosage
Alphacypermethrine 10% SC	G-Crop GFS	G-Crop GFC	40:60	5%
Alphacypermethrine 5% SC	G-Crop GFS	G-Crop GFC	40:60	8%
Ametryn 50% SC	G-Crop GFS		100	8%
Atrazine 50% SC	G-Crop GFS	G-Crop GFC	60:40	8%
Azoxystrobin 25% SC	G-Crop GFS	G-Crop GFC	60:40	5%
Buprofezin 25% SC	G-Crop GFS	G-Crop GFC	55:45	5%
Carbendazim 46.27% SC	G-Crop GFS	G-Crop GFC	55:45	6%
Carbendazim 50% SC	G-Crop GFS	G-Crop GFC	55:45	8%
Chlorothalonil 50% SC	G-Crop GFS	G-Crop GFC	40:60	8%
Cyazofamid 40% SC	G-Crop GFS	G-Crop GFC	40:60	5%
Deltamethrin 10% SC	G-Crop GFS	G-Crop GFC	45:55	8%
Deltamethrin 2.5% SC	G-Crop GFS	G-Crop GFC	40:60	6%
Demerol 48% SC	G-Crop GFS	G-Crop GFC	80:20	5%
Fipronil 20% SC	G-Crop GFS	G-Crop GFC	40:60	5%
Fipronil 4% + Thiamethoxam 4% SC	G-Crop GFS	G-Crop GFC	40:60	5%
Fipronil 5% SC	G-Crop GFS	G-Crop GFC	40:60	5%
Hexaconazole 5% SC	G-Crop GFS	G-Crop GFC	40:60	5%
Hexaconazole 10% SC	G-Crop GFS	G-Crop GFC	40:60	8%
Imidacloprid 20% SC	G-Crop GFS	G-Crop GFC	40:60	5%
Imidacloprid 35% SC	G-Crop GFS	G-Crop GFC	60:40	5%
Imidacloprid 48% SC	G-Crop GFS	G-Crop GFC	60:40	8%
Methoxefenozide 24% SC	G-Crop GFS	G-Crop GFC	70:30	5%
Permethrin 25% SC	G-Crop GFS	G-Crop GFC	40:60	8%
Tebuconazole 60% SC	G-Crop GFS	G-Crop GFC	40:60	8%
Thiacloprid 26% SC	G-Crop GFS	G-Crop GFC	40:60	7%
Thiram 50% SC	G-Crop GFS		100	6%
Zirum 27% SC	G-Crop GFS	G-Crop GFC	40:60	6%
Corogen 18.5% SC	G-Crop GFS	G-Crop GNP	50:50	10%
Zinc 39.5% SC	G-Crop SC ZO		100	12%



## Agro Emulsifier for SL (Soluble Liquid)

Active Toxicants	Product	Dosage
Di Chloride Paraquat 24% SL	G-Crop PQ 200	8%
Glufosinate Ammonium 13.5% SL	G-Crop GA 135	10%
Glufosinate Ammonium 15% SL	G-Crop GA 135	12%
Glufosinate Ammonium 20% SL	G-Crop GA 135	12%
Glyphosate 41% SL (Tallow based)	G-Crop GP 041	5%
Glyphosate 41% SL (Non Tallow based)	G-Crop GPN	10%
Glyphosate 48% SL	G-Crop GP 480	10%
Imazethapyr 10% SL	G-Crop IMZP	10%
Imidacloprid 17.8% SL	G-Crop IMDC 178	6%
Validamycin 3% SL	G-Crop VLD 300	5%
2,4 D Amine 60% SL	G-Crop SL D-24	5%



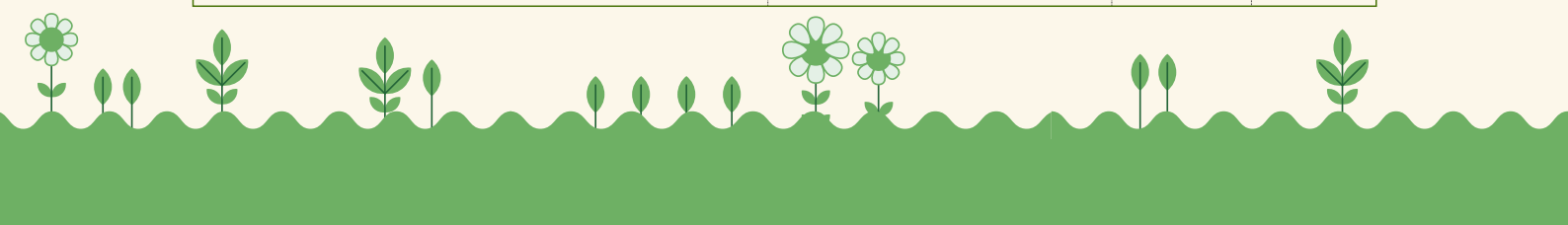
## Agro Emulsifier for EW (Emulsion in Water)

Active Toxicants	Product	Dosage
Abamectin 10% EW	G-Crop ABE	10%
Butachlor 50% EW	G-Crop BTE	8%
Chlorpyriphos 30% EW	G-Crop CPE	8%
Cypermethrin 10% EW	G-Crop CME	8%
Cypermethrin 25% EW	G-Crop CME	10%
Imidacloprid 60% EW	G-Crop IME	10%
Lambda Cyhalothrin 25% EW	G-Crop LCE	8%
Pretilachlor 37% EW	G-Crop PTE	10%
Propiconazole 25% EW	G-Crop PCE	8%
Tebuconazole 20% EW	G-Crop TBE	8%
Triacantanol 0.1% EW	G-Crop TCE	8%
Zeta Cypermethrin 10% EW	G-Crop ZCE	10%



## Agro Emulsifier for WP & WDG

Active Toxicants	Product		Recommended	
			Ratio	Dosage
Copper Oxychloride+Metalaxyl 50% WP	G-Surf NPS	G-Surf BFS	50:50	10%
Cymoxanil + Mancozeb 72% WP	G-Surf NPS	G-Surf BFS	50:50	10%
Alphacypermethrin 5% WP	G-Surf NPS	G-Surf BFS	50:50	6%
Alphacypermethrin 10% WP	G-Surf NPS	G-Surf BFS	50:50	5%
Carbendazim 50% WP	G-Surf NPS	G-Surf BFS	50:50	7%
Chlorothalonil 75% WP	G-Surf NPS	G-Surf BFS	50:50	5%
Dodine 65% WP	G-Surf NPS	G-Surf BFS	50:50	5%
Lambda 10% WP	G-Surf NPS	G-Surf BFS	50:50	6%
Lenacil 80% WP	G-Surf NPS	G-Surf BFS	50:50	6%
Metamitron 70% WP	G-Surf NPS	G-Surf BFS	50:50	8%
Myclobutanil 10% WP	G-Surf NPS	G-Surf BFS	70:30	8%
Metsulfuron 20% WP	G-Surf NPS	G-Surf BFS	50:50	6%
Tricyclazole 75% WP	G-Surf NPS	G-Surf BFS	60:40	8%
Atrazine 50% WP	G-Surf NPS	G-Surf NDS	50:50	5%
Ametryn 80% WP	G-Surf NPS	G-Surf SDC-23	50:50	6%
Benomyl 50% WP	G-Surf NPS	G-Surf SDC-23	50:50	5%
Deltamethrin 2.5% WP	G-Surf NPS	G-Surf SDC-23	50:50	6%
Diuron 80% WP	G-Surf NPS	G-Surf SDC-23	50:50	5%
Metribuzin 70% WP	G-Surf NPS	G-Surf SDC-23	50:50	10%
Sulphur 80% WP	G-Surf NPS	G-Surf SDC-23	50:50	12%
Cartap Hydrochloride 4% G	G-Crop PAP	G-Crop PAP	50:50	5%
Mancozeb 63%+Carbendazim 12% WP	G-Surf MCZ		100	4%
Mancozeb 80% WP	G-Surf MCZ		100	3%
Matalaxyl 25% WP	G-Surf MCZ		100	4%
Metalaxyl 8% + Mancozeb 64% WP	G-Surf MCZ		100	4%
Propineb 70% WP	G-Surf MCZ		100	4%
Imidacloprid 75% WP	G-Surf IMC		100	8%
Clodinofof 15% WP	G-Crop 542		100	35%
Emamectin Benzoate 5% SG	G-Surf EBZ		100	5%
Glyphosate 71% SG	G-Crop SGS		100	6%
Imidacloprid 70% WDG	G-Surf IDP		100	8%
Pymetrozine 50% WDG	G-Surf ZMP		100	12%
Sulfosulfuron 75% WDG	G-Crop SFS		100	8%
Thiamethoxam 25% WDG	G-Surf TMX		100	6%



# Agro Emulsifier for Biopesticides

Active Toxicants	Product	Dosage
Gibberelic Acid 0.001% SL	G-Crop 542	3%
Gibberelic Acid 0.186% SP	G-Surf EBZ	5%
Gibberelic Acid 40% WDG	G-Crop GA 40	1.5%
Mineral Oil	G-Crop MIO	15%
Neem Oil	G-Crop NEO	10%
Paraffin Oil	G-Crop PRO	10%
Pine Oil	G-Crop PNO	8%
Silicon Oil	G-Crop SIO	10%



## Generics (Nonionic):

- ✔ Nonyl Phenol Ethoxylates (NPE-9.5, 10, 11, 13, 20...)
- ✔ Styrenated Phenol Ethoxylates (SPE-15, 20, 30...)
- ✔ Octyl Phenol Ethoxylates
- ✔ Castor Oil Ethoxylates
- ✔ Fatty Alcohol Ethoxylates
- ✔ Other Products - Tri Ethanol Amine-85%. Diethanol Amine, Polysorbates - 20, 60 & 80

## Anionic:

- ✔ CABS (CABS-50%, 60%, 70%) in Isobutanol, N-Butanol
- ✔ Other Products - SLS, SLES, OT - 50/70

## Adjuvants:

- ✔ Amine Ethoxylates (Tallow Amine Ethoxylates, Coco Amine Ethoxylates etc.)

## Stabilisers:

- ✔ Epoxydised Soya Bean Oil
- ✔ Emulsifier for Pine Oil
- ✔ Emulsifier for Paraffin Wax
- ✔ Emulsifier for Polyethylene Wax



## About **GOLDFINCH AGROSURF PVT. LTD.**

GOLDFINCH AGROSURF PVT LTD is a specialized manufacturer and supplier of high-quality agro pesticide emulsifiers, serving the formulation needs of the crop protection industry. With a strong focus on performance, consistency, and reliability, we support agrochemical manufacturers in developing effective and stable pesticide formulations.



Our emulsifiers are engineered to deliver superior dispersion, compatibility, and shelf-life stability across a wide range. Backed by technical expertise and strict quality control systems, we ensure batch-to-batch consistency that meets industry and regulatory standards.



At GOLDFINCH AGROSURF, innovation and customer collaboration are at the core of our operations. We work closely with our clients to understand their formulation challenges and provide customized emulsifier solutions that enhance product performance while optimizing cost efficiency.



Committed to responsible and sustainable agriculture, we continuously strive to develop formulation technologies that enable efficient use of agrochemicals and contribute to improved crop protection outcomes aiming for quality, innovation, and dependable service.

### **Mission** ””

*To develop and deliver high-quality agro pesticide emulsifiers that enhance formulation performance, ensure consistency, and support effective crop protection, while partnering with our customers through innovation, technical expertise, and a commitment to sustainable agricultural practices.*

””



# GOLDFINCH SPECIALITY CHEMICALS PVT. LTD.

Goldfinch Speciality Chemicals is a sister company of Goldfinch Group of companies. It is a renowned chemical manufacturing company established by highly experienced professionals with a combined experience of over 25 years in the diverse field of specialty chemicals supply and manufacturing.

Manufacturer, Supplier & Exporter dedicated to providing our customers with personalized solutions for their unique chemical needs with goal to provide a comprehensive range of speciality chemicals specifically tailored to meet the needs of various industries.

## Future Growth



*To be a trusted global leader in agro pesticide emulsifier solutions, recognized for innovation, consistent quality, and our contribution to efficient and sustainable crop protection worldwide.*



### Our Goal

*To consistently deliver high-performance agro pesticide emulsifiers that enhance formulation stability and effectiveness, while building longterm partnerships with agrochemical manufacturers through quality, innovation, and reliable technical support.*






## Goldfinch AgroSurf Pvt. Ltd.

 +91 90161 82538

 [www.goldfinchagrosurf.com](http://www.goldfinchagrosurf.com)

 [info@goldfinchchemicals.com](mailto:info@goldfinchchemicals.com)

FOF 16, S9 Square, Near Lilleria Party Plot, Vemali, Vadodara - Gujarat - 391740