



Office :

No.22, 6th Cross, Siva Nagar,

Ramanuja Nagar Near,

Singanallur, Coimbatore - 641015



98430 49099, 98651 89009, 82200 18848



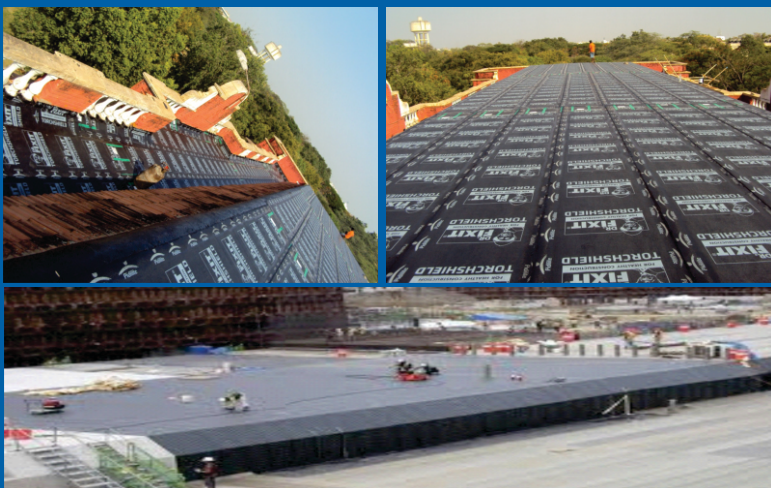
lakshmisalescbe@gmail.com

About us

Lakshmi Construction Chemicals established in 2002, is one of the leading suppliers & service of waterproofing chemicals such as specialty epoxy flooring adhesives, construction joint sealants, bitumen waterproofing, crystalline waterproofing, membrane based waterproofing, injection grout and strengthening grouts, epoxy flooring, expansion joint sealants, chemical based waterproofing coating, heat reflecting coatings, protective coatings, industrial floor coatings, concrete repair works and pest control services in South India.

APP Membrane Waterproofing

App Waterproofing Membrane are available with different reinforcement of polyester, glass fiber or compound reinforcement, our range is highly elastic as it obtained by modifying distilled bitumen. Our range of APP waterproofing membrane use PE film, fine sands, or mineral slates as finishing surfaces which can be applied by hot - melting method.



AREA OF APPLICATION

- Flat and sloped roofs of Large Terraces
- Basements, Foundation & Retaining Walls
- Roof Gardens, Bridges
- Sunken slabs
- Tunnels

SL Floor Coating

Self-Leveling System is a three component pigmented floor topping which is laid at a thickness of 0.5 mm to 4 mm. Self-leveling System is joint less, monolithic, smooth, nonporous, hygienic and chemically resistant and is easy to clean and maintain. It is available in a number of colors and has sufficient strength to withstand industrial traffic with nylon/rubber wheels. Self-leveling System is Ideal for Industrial floor, clean room, laboratories & electronic assembly area, hospitals, switch gear plant room, pharma industries, food processing industries & showrooms.



AREA OF APPLICATION

- Chemical plants
- Pharmaceutical Industries
- Food Processing Areas
- Bottling Plants
- Electric/Electronics Industries
- Computer Rooms
- Hospital Operation Theaters & Corridors
- Nuclear Power Plants
- Dairies & Beverages
- Aerospace Industry
- Airport Hangers
- Picture Tube Manufacturing Plants
- Automobile Workshops
- Textile Mills
- Fermentation Floors in Tea Gardens
- Industrial Floors
- Car Parking
- Laboratories

Crystallization & Chemical Based Waterproofing

- Crystallization is a unique, surface applied penetrative capillary water proofing system that provides total and permanent water proofing solution to water leakage, ingress or seepage in concrete structure or any cementitious substrates. Crystallization is a blend of selected cement, high-grade silica aggregates and moisture activated chemicals. In the presence of water, the active the chemicals present in Crystallization will penetrate in to the water bearing capillaries of concrete and react with lime to produce insoluble crystals. This crystalline growth will seal the pores and hair line cracks in the concrete and thus effectively block further passage of water.



AREA OF APPLICATION

- Basements Concrete Structures
- Water Tanks / Towers
- Swimming pools ● Water treatment Plants
- Harbors and dams ● Bridge decks and foundations
- Tunnels and underground car parks

Epoxy Water Proofing is a two component epoxy resin based waterproofing compound. one part is consisting of epoxy resin and the other part with curing agent. After mixing both the parts it can be thinned down with water. It possesses all the attributes of normal solvent based epoxy compositions such as excellent water and chemical resistance, adhesion, hardness, toughness and mechanical strength. One of the major advantage of Epoxy over solvent based epoxy is that it can be applied on damp surface also. Being free from solvents, it does not pose any health hazards or fire hazards to the Consumers. Epoxy is completely safe, convenient & economical to apply.

Epoxy / Protective Coating



AREA OF APPLICATION

- Brick, Concrete water storage tanks
- Damp walls, as a primer before painting
- Coating on walls of Breweries & Food processing industries.

Acrylic Elastomeric Waterproofing

- Acrylic Elastomeric Waterproofing is a high performance Elastomeric acrylic based water proofing coating with anti fungal & crack bridging ability. Recommend for protection of exterior cementitious surfaces.

AREA OF APPLICATION

- Brick, Concrete water storage tanks
- Damp walls, as a primer before painting
- Coating on walls of Breweries & Food processing industries.



Expansion Joint Sealant Filling

Polysulphide / Polyurethane Sealant is based on gun grade, liquid polymers which adhere to most of basic civil engineering materials like cementitious substrates, glass, wood, mild steel etc. The products is used for sealing expansion joints, door-window surrounding joints & floor concrete to wall masonry separation joints etc... After mixing the base component & curing agent in give proportion rubber like material in pourable consistency is formed.

Water Repellant / Anti-Fungal Coating

Water replant is water based liquid compound, which penetrates the pores of, treated materials and provides a durable, invisible, and highly effective water repellant film. Water repellant generally dries touch-free in two to four hours. It protects masonry surfaces from moisture absorption, dirt and dust. It waterproofs the plaster and resists the growth of fungus on it.

PU- Epoxy / Injection Grouting



Injection Grouting is the injection of specially formulated PU-EPOXY the ground to improve its strength or reduce permeability. PU-EPOXY grouting is most commonly performed by drilling holes into the foundation to intercept open cracks, joints, fissures or cavities, then pumping under pressure balanced and stabilized grout mixes using a combination of cement, water and additives.

AREA OF APPLICATION

- Applied to cracks in concrete, masonry, Roof topping, pre-fabricated concrete parts
- Injection grouting is used either for sealing the leakages or for attending cracks in the structural members.
- In order to fill the pores, honey combs Inside the structures injection grouting is adopted before waterproofing and repairing.



AREA OF APPLICATION

- Expansion joints Vertical & Horizontal £ Commercial or residential buildings
- Joints in concrete roads bridges,
- Subway, flyovers & airport runway



AREA OF APPLICATION

- For Exterior / Interior use, treating the joints of tile surfaces subject to contact with water, such as school corridors or washrooms.
- To treat above ground masonry surfaces such as brick, concrete, stone wall etc.
- On stone surfaces, cladding on exteriors of buildings, concrete panels and all calcareous building materials
- To treat cement painted or sand textured, Granite, Stone surface painted plaster on outside walls.

Our Other Applications

- Basement Water Proofing
- Membrane Water Proofing (1mm, 1.5mm, 2mm)
- Bituminous Water Proof Coating
- Polyurthene Coating
- Weather and Waterproof Coating (Cool Coating)
- Tiles Joint Filling (Cement and Epoxy based)
- Silicone Sealant
- Foam Sealant
- Anchor Grouting
- Crack filling Treatment,
- Industrial Floor Coating & Grouts
- Micro Concrete
- Anti – Corrosive Coating
- Civil Special Repairs & Rahabilitation
- Pest Control Service (New and Old)