

AEROTECH TEMPORARY FASTENER

SHEET METAL FASTENER PLIERS

HAND OPERATED PLIERS USE FOR MINI , STANDARD & HEAVY TYPE TEMPORARY FASTENER



• ATS Series Selection Table

PART NO.	APPLICABLE TO THICKNESS	LENGTH (MM)	PLASTIC GRIP
AT-001	ATA , ATB, & ATC	180	YES
AT-002	ATA , ATB, & ATC	180	NO

*Customizable non-standard sizes and longer clamping range

Safety Precaution: Read and follow all safety and operating instructions.

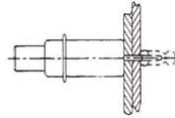
WARNING: Face and eye protections must be worn while operating power tools, per ANSI B18 Products and

specifications subject to change without prior notice.

- More Details: <https://www.aerotechtools.in/we-offer/category/>
- E-mail: info@aerotechtools.in

AEROTECH TEMPORARY FASTENER

MINI TYPE SHEET METAL FASTENERS & PROTECTIVE CAP



• ATC Series Selection Table IMPERIAL SIZE.

PART NO.	HOLE SIZE (ITCHES)	GRIPE RANGE (ITCHES)	TYPE	OVERALL LENGTH	COLOUR CODE
ATC-3/32"	3/32"	0~1/4	MINI	1-3/4"	ZINC
ATC-1/8"	1/8"	0~1/4	MINI	1-3/4"	COPPER
ATC-5/32"	5/32"	0~1/4	MINI	1-3/4"	BLACK
ATC-3/16"	3/16"	0~1/4	MINI	1-3/4"	BRASS
ATC-7/32"	7/32"	0~1/4	MINI	1-3/4"	ZINC
ATC-1/4"	1/4"	0~1/4	MINI	1-3/4"	COPPER

• ATC Series Selection Table - Metric Sizes

PART NO.	HOLE SIZE (MM)	GRIPE RANGE (MM)	TYPE	COLOUR CODE
ATA-2.5	2.5	0-6.5	MINI	BLACK
ATA-3.0	3	0-6.5	MINI	BLACK
ATA-3.5	3.5	0-6.5	MINI	BLACK
ATA-4.0	4	0-6.5	MINI	BLACK
ATA-4.5	4.5	0-6.5	MINI	BLACK
ATA-5.0	5	0-6.5	MINI	BLACK
ATA-5.5	5.5	0-6.5	MINI	BLACK
ATA-6.0	6	0-6.5	MINI	BLACK
ATA-6.5	6.5	0-6.5	MINI	BLACK

*Customizable non-standard sizes and longer clamping range

Safety Precaution: Read and follow all safety and operating instructions.

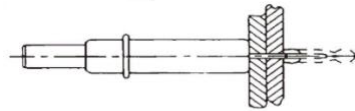
WARNING: Face and eye protections must be worn while operating power tools, per ANSI B18 Products and

specifications subject to change without prior notice.

- More Details: <https://www.aerotechtools.in/we-offer/category/>
- E-mail: info@aerotechtools.in

AEROTECH TEMPORARY FASTENER

STANDARD TYPE SHEET METAL FASTENERS WITH PROTECTIVE CAP



• ATA Series Selection Table IMPERIAL SIZE.

PART NO.	HOLE SIZE (ITCHES)	GRIPE RANGE (ITCHES)	TYPE	OVERALL LENGTH	COLOUR CODE
ATA-3/32"	3/32"	0~1/4	STANDARD	2-1/4"	ZINC
ATA-1/8"	1/8"	0~1/4	STANDARD	2-1/4"	COPPER
ATA-5/32"	5/32"	0~1/4	STANDARD	2-1/4"	BLACK
ATA-3/16"	3/16"	0~1/4	STANDARD	2-1/4"	BRASS
ATA-7/32"	7/32"	0~1/4	STANDARD	2-1/4"	ZINC
ATA-1/4"	1/4"	0~1/4	STANDARD	2-1/4"	COPPER

• ATA Series Selection Table - Metric Sizes

PART NO.	HOLE SIZE (MM)	GRIPE RANGE (MM)	TYPE	COLOUR CODE
ATA-2.5	2.5	0-6.5	STANDARD	BLACK
ATA-3.0	3	0-6.5	STANDARD	BLACK
ATA-3.5	3.5	0-6.5	STANDARD	BLACK
ATA-4.0	4	0-6.5	STANDARD	BLACK
ATA-4.5	4.5	0-6.5	STANDARD	BLACK
ATA-5.0	5	0-6.5	STANDARD	BLACK
ATA-5.5	5.5	0-6.5	STANDARD	BLACK
ATA-6.0	6	0-6.5	STANDARD	BLACK
ATA-6.5	6.5	0-6.5	STANDARD	BLACK

*Customizable non-standard sizes and longer clamping range

Safety Precaution: Read and follow all safety and operating instructions.

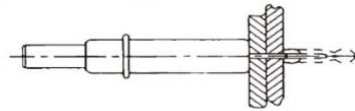
WARNING: Face and eye protections must be worn while operating power tools, per ANSI B18 Products and

specifications subject to change without prior notice.

- More Details: <https://www.aerotechtools.in/we-offer/category/>
- E-mail: info@aerotechtools.in

AEROTECH TEMPORARY FASTENER

STANDARD TYPE SHEET METAL FASTENERS WITH PROTECTIVE CAP



• ATB Series Selection Table IMPERIAL SIZE.

PART NO.	HOLE SIZE (ITCHES)	GRIPE RANGE (ITCHES)	TYPE	OVERALL LENGTH	COLOUR CODE
ATB-3/32"	3/32"	0~1/2	HEAVY	2-1/4"	ZINC
ATB-1/8"	1/8"	0~1/2	HEAVY	2-1/4"	COPPER
ATB-5/32"	5/32"	0~1/2	HEAVY	2-1/4"	BLACK
ATB-3/16"	3/16"	0~1/2	HEAVY	2-1/4"	BRASS
ATB-7/32"	7/32"	0~1/2	HEAVY	2-1/4"	ZINC
ATB-1/4"	1/4"	0~1/2	HEAVY	2-1/4"	COPPER

• ATB Series Selection Table - Metric Sizes

PART NO.	HOLE SIZE (MM)	GRIPE RANGE (MM)	TYPE	COLOUR CODE
ATB-2.5	2.5	0-13	HEAVY	BLACK
ATB-3.0	3	0-13	HEAVY	BLACK
ATB-3.5	3.5	0-13	HEAVY	BLACK
ATB-4.0	4	0-13	HEAVY	BLACK
ATB-4.5	4.5	0-13	HEAVY	BLACK
ATB-5.0	5	0-13	HEAVY	BLACK
ATB-5.5	5.5	0-13	HEAVY	BLACK
ATB-6.0	6	0-13	HEAVY	BLACK
ATB-6.5	6.5	0-13	HEAVY	BLACK

*Customizable non-standard sizes and longer clamping range

Safety Precaution: Read and follow all safety and operating instructions.

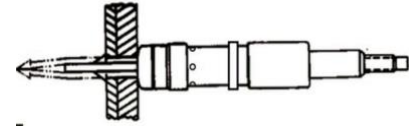
WARNING: Face and eye protections must be worn while operating power tools, per ANSI B18 Products and

specifications subject to change without prior notice.

- More Details: <https://www.aerotechtools.in/we-offer/category/>
- E-mail: info@aerotechtools.in

AEROTECH TEMPORARY FASTENER

SPRING LOADED CYLINDRICAL BODY TEMPORARY FASTENER & PROTECTIVE CAP



PART NO.	HOLE SIZE (ITCHES)	GRIP RANGE (ITCHES)	OVERALL LENGTH (INCHES)	COLOUR CODE
ATD-1-3/32"	3/32"	0~1/2"	3-27/32"	ZINC
ATD-2-3/32"	3/32"	1/2"~1"	3-27/32"	ZINC
ATD-3-3/32"	3/32"	1"~ 1 1/2"	3-27/32"	ZINC
ATD-1-1/8"	1/8"	0~1/2"	3-27/32"	COPPER
ATD-2-1/8"	1/8"	1/2"~1"	3-27/32"	COPPER
ATD-3-1/8"	1/8"	1"~ 1 1/2"	3-27/32"	COPPER
ATD-4-1/8"	1/8"	2" ~ 2-1/2"	3-27/32"	COPPER
ATD-1-5/32"	5/32"	0~1/2"	3-27/32"	BLACK
ATD-2-5/32"	5/32"	1/2"~1"	3-27/32"	BLACK
ATD-3-5/32"	5/32"	1"~ 1 1/2"	3-27/32"	BLACK
ATD-4-5/32"	5/32"	2" ~ 2- 1/2"	3-27/32"	BLACK
ATD-1-3/16"	3/16"	0~1/2"	3-27/32"	BRASS
ATD-2-3/16"	3/16"	1/2"~1"	3-27/32"	BRASS
ATD-3-3/16"	3/16"	1"~ 1 1/2"	3-27/32"	BRASS
ATD-4-3/16"	3/16"	2" ~ 2-1/2"	3-27/32"	BRASS
ATD-1-7/32"	7/32"	0~1/2"	3-27/32"	ZINC
ATD-2-7/32"	7/32"	1/2"~1"	3-27/32"	ZINC
ATD-3-7/32"	7/32"	1"~ 1 1/2"	3-27/32"	ZINC
ATD-4-7/32"	7/32"	2" ~ 2-1/2"	3-27/32"	ZINC
ATD-1-1/4"	1/4"	0~1/2"	3-27/32"	COPPER
ATD-2-1/4"	1/4"	1/2"~1"	3-27/32"	COPPER
ATD-3-1/4"	1/4"	1"~ 1 1/2"	3-27/32"	COPPER
ATD-4-1/4"	1/4"	2" ~ 2-1/2"	3-27/32"	COPPER
ATD-1-5/16"	5/16"	0~1/2"	3-27/32"	BLACK
ATD-2-5/16"	5/16"	1/2"~1"	3-27/32"	BLACK
ATD-3-5/16"	5/16"	1"~ 1 1/2"	3-27/32"	BLACK
ATD-4-5/16"	5/16"	2" ~ 2-1/2"	3-27/32"	BLACK
ATD-4-3/8"	3/8"	0~1/2"	3-7/8"	BLACK WITH BRASS CAP
ATD-4-3/8"	3/8"	1/2"~1"	3-7/8"	BLACK WITH BRASS CAP
ATD-4-3/8"	3/8"	1"~ 1 1/2"	3-7/8"	BLACK WITH BRASS CAP
ATD-4-3/8"	3/8"	2" ~ 2-1/2"	3-7/8"	BLACK WITH BRASS CAP

*Customizable non-standard sizes and longer clamping range

Safety Precaution: Read and follow all safety and operating instructions.

WARNING: Face and eye protections must be worn while operating power tools, per ANSI B18 Products and

specifications subject to change without prior notice.

- More Details: <https://www.aerotechtools.in/we-offer/category/>
- E-mail: info@aerotechtools.in

AEROTECH TEMPORARY FASTENER

SIDE GRIP TYPE SHEET METAL FASTENERS.



• ATS Series Selection Table

PART NO.	MATERIAL THICKNESS	JAW DEPTH	COLOUR CODE
ATS-1/2 x 1/2	0-1/2"	1/2"	COPPER
ATS-1/2 x 1	0-1/2"	1	COPPER
ATS-3/4 x 1/2	0-3/4"	1/2"	BRASS
ATS-3/4 x 1	0-3/4"	1	BRASS

*Customizable non-standard sizes and longer clamping range

Safety Precaution: Read and follow all safety and operating instructions.

WARNING: Face and eye protections must be worn while operating power tools, per ANSI B18 Products and

specifications subject to change without prior notice.

- More Details: <https://www.aerotechtools.in/we-offer/category/>
- E-mail: info@aerotechtools.in