



LALITHA ENGINEERING & TRADERS

About Us

Established in the year 1989, LALITHA ENGINEERING & TRADERS is the largest provider of Fabrication and Large Scale Customization of Structures such as Fabrication Service, Engineering Service, Mild Steel Fabrication, Industrial Shed, etc. Our professionals stay current on industry advances, allowing them to provide a high-quality range of galvanizing services for steel tubing and angles. Furthermore, we have formed separate teams for each task, and they collaborate closely to provide a comprehensive range of services. Our professionals are extremely driven and work tirelessly around the clock to suit the client's individual needs. As the leading name in the Industry, we take pride in our ability to deliver quality results within the given time. Our team is equipped with the finest Technology to ensure maximum efficiency. We are committed to delivering a fine range of Structural fabrication Services.

Our Team

Chairman

Mr. D. Govind

CEO

D.S. Manikanta

Technical Head

Adhinarayana

Project Handling

Ram Murthy



Chairman



CEO

Projects

Madhav Edible Brains Oil Pvt Ltd

Nico Agro Oil Products Pvt Ltd

Viswa Saravana Agro Products - VSAP

Arjuna solvents & extractions pvt ltd



MADHAVI EDIBLE BRAIN OIL PVT LTD

NICO AGRO OIL PRODUCTS

VISWA SARAVANA AGRO PRODUCTS

ARJUNA SOLVENTS & EXTRACTIONS

Avyaktt Oils Private Limited

SARADA AGRO OILS LIMITED

Bommiddala Sreeram Agro-Traders Private Limited



NAGA HANUMAN SOLVENTS & PVT LTD

SYNTHITE INDUSTRIES PRIVATE LIMITED

AVYAKTT OILS PRIVATE LIMITED

SARADA AGRO OILS LIMITED

BOMMIDDALA SREERAM AGRO TRADERS

PATTABHI AGRO FOODS PVT LTD



3F OIL PALM PRIVATE LIMITED

Our Services

- ❖ Fabrication Services
- ❖ Solvent Extraction Plants Constructions
- ❖ Chinese Structural Feed Plant Constructions
- ❖ Oil Refinery Structures
- ❖ Upcoming Battery Line Structures

Fabrication Services

Lalitha Engineerings provides comprehensive **Fabrication Services**, specializing in the design, cutting, shaping, and assembly of metal components for various industrial applications. With advanced machinery and skilled professionals, we ensure precision, strength, and durability in every structure. Our expertise covers custom metal fabrication, heavy structural components, and industrial frameworks, adhering to international quality standards for optimal performance.



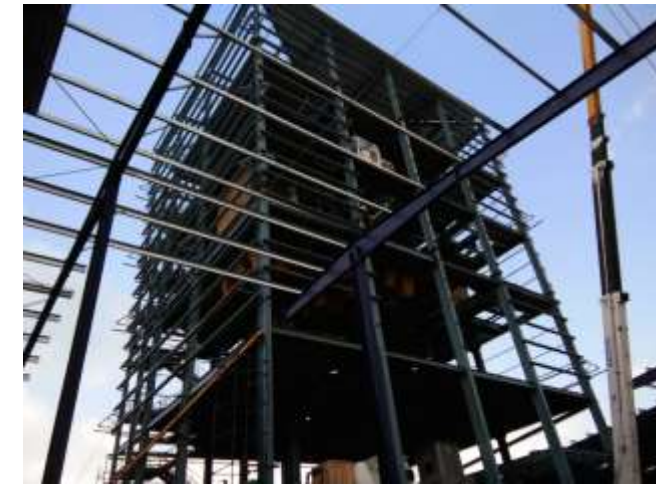
Solvent Extraction Plants Constructions

We design and construct state-of-the-art **Solvent Extraction Plants** that optimize the extraction of oils and chemicals from raw materials. Our projects are built with cutting-edge technology to enhance efficiency, reduce energy consumption, and maximize yield. With a focus on safety and environmental sustainability, our plants are engineered for smooth operation and long-lasting reliability, meeting both local and international regulatory standards.



Chinese Structural Feed Plant Constructions

Our expertise includes **Chinese Structural Feed Plant Constructions**, where we implement advanced design methodologies and robust construction techniques inspired by modern Chinese engineering. These plants are optimized for large-scale feed production, ensuring high efficiency and seamless operations. We prioritize quality, precision, and cost-effectiveness, delivering projects that meet global standards while supporting sustainable agricultural growth.



Oil Refinery Structures

Lalitha Engineering's excels in building **Oil Refinery Structures** that are designed to withstand extreme conditions while ensuring optimal processing efficiency. Our refinery solutions focus on maximizing productivity, enhancing safety, and minimizing environmental impact. Through rigorous quality control and modern construction techniques, we deliver robust and compliant structures that support complex refining operations with reliability and efficiency.



Upcoming Battery Line Structures

Upcoming **Battery Line Structures** project. At **Lalitha Engineering's**, we specialize in designing and fabricating robust, efficient, and scalable battery line infrastructures that align with modern industrial standards.

Our expertise includes:

- High-precision fabrication tailored to energy storage needs.
- Seamless integration with automation and production lines.
- Compliance with global safety and quality standards.

We are confident that our experience and commitment to excellence will add significant value to your project. I would love the opportunity to discuss this further and explore how we can support your goals.

Looking forward to your positive response.

Some Strong Hooks to Motivate and Compel People to Follow your Page

1. "Unlock Your Potential": "Ready to take your business to the next level? Follow us for exclusive tips, strategies, and insights to help you achieve your goals!"
2. "Get Ahead of the Curve": "Stay ahead of the competition with our expert advice, trends, and industry insights. Follow us for the latest updates!"
3. "Transform Your Business": "Want to transform your business? Follow us for inspiring stories, practical tips, and expert guidance to help you achieve your dreams!"
4. "Join the Movement": "Join our community of like-minded individuals passionate about topic. Follow us for exclusive content, updates, and opportunities to connect!"
5. "Learn from the Experts": "Get insider knowledge from industry experts and thought leaders. Follow us for valuable insights, tips, and advice to help you succeed!"

Get In Touch

Address: Tanuku Industrial Area, Y Junction, Andhra Pradesh.
District: West Godavari, PIN : 534211

Head Office: Somajiguda ,Hyderabad ,Telangana.

Email: info@lalithaengineerings.com, lalithatraderstnk99@gmail.com

Website: www.lalithaengineerings.com

Contact No.: +919573792939