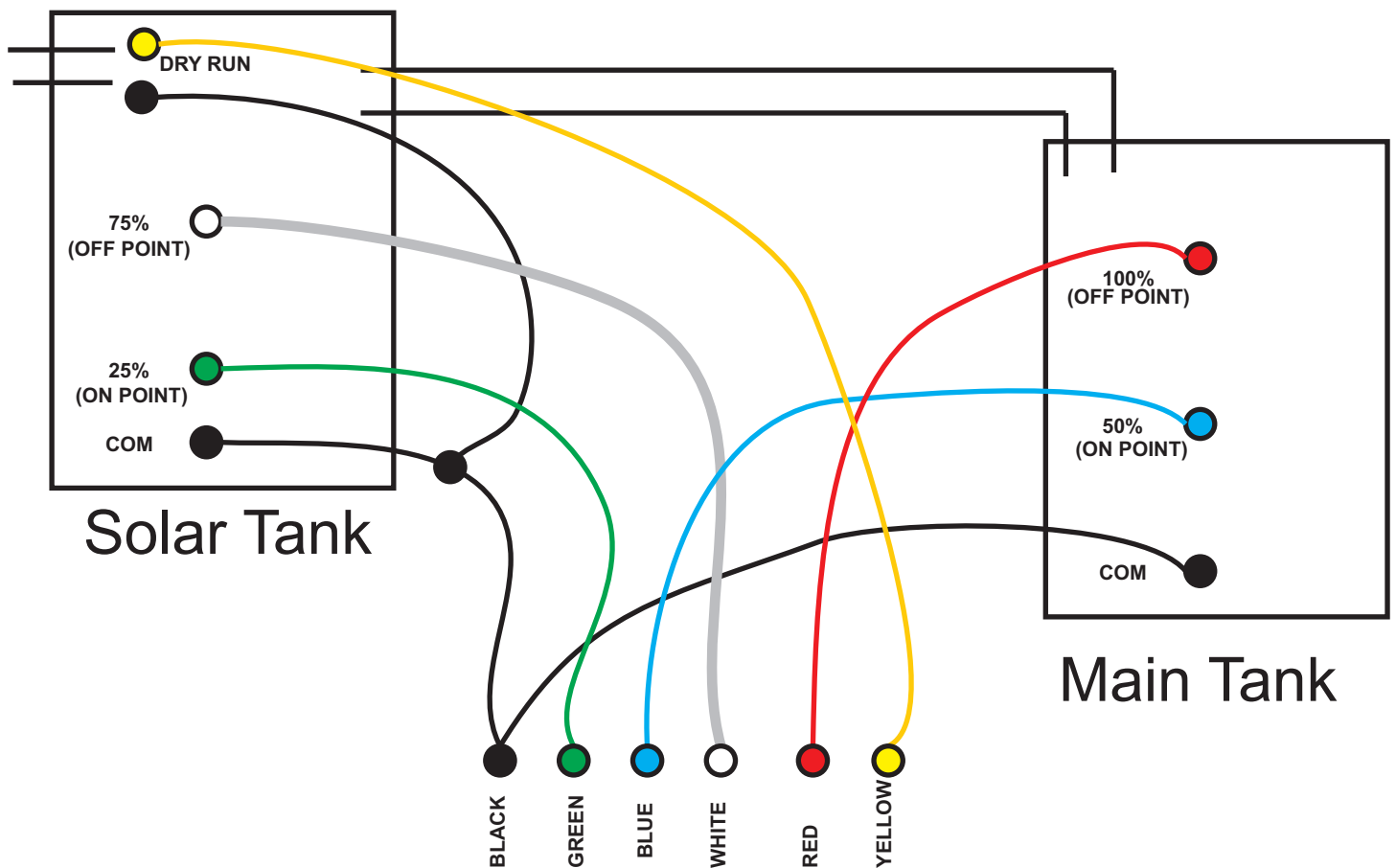


# NPA

## 6 Core 1 Tank

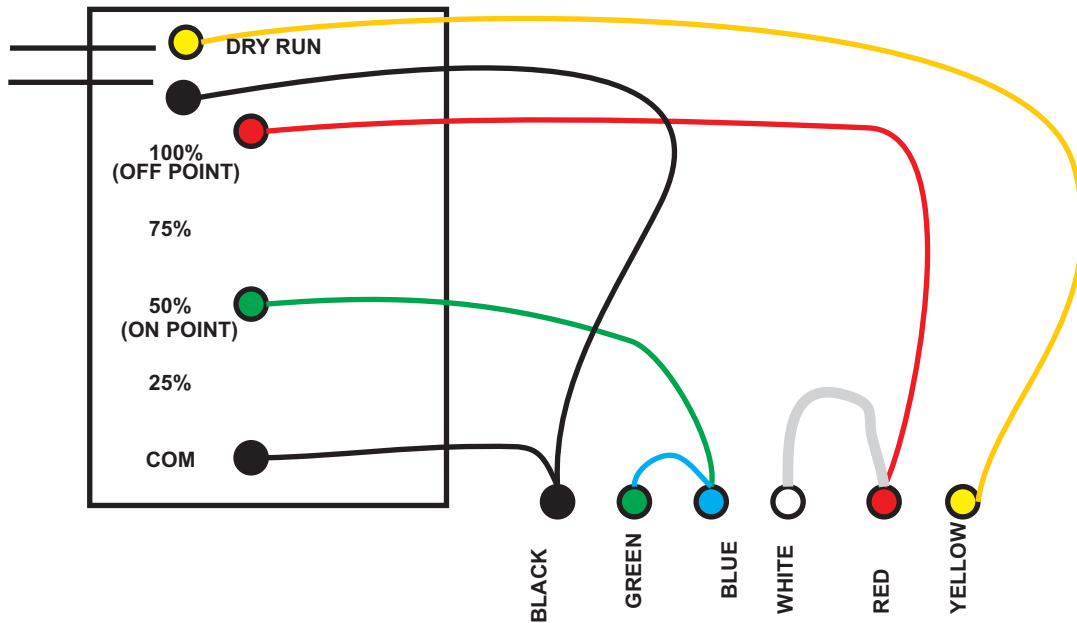


## 6 Core 2 Tank

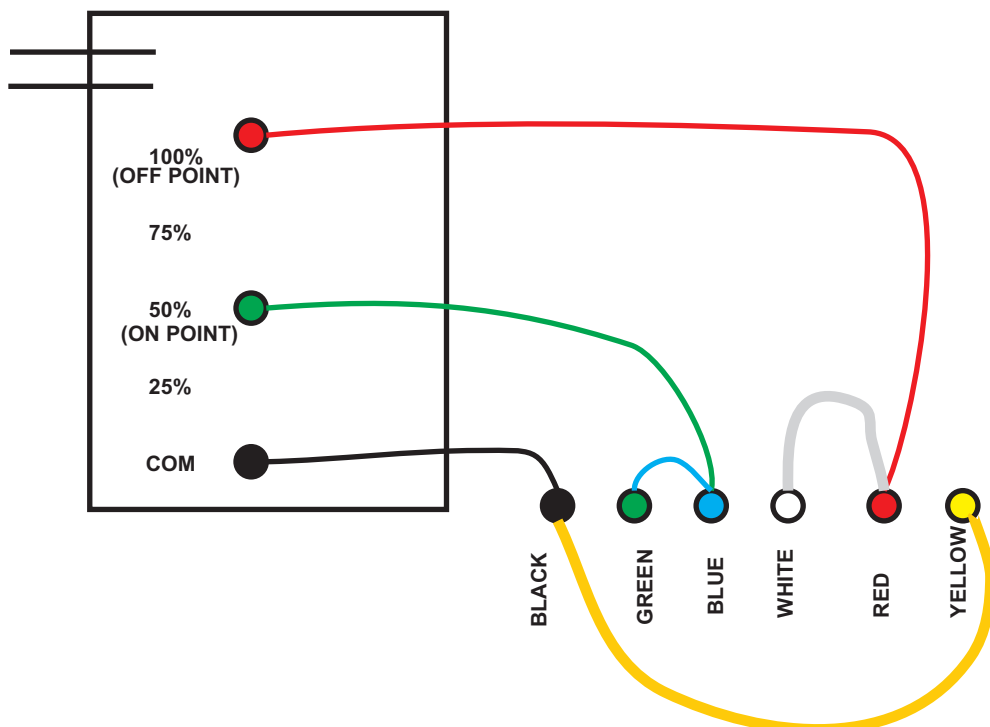


# NPA

## 4 Core 1 Tank With Dry Run

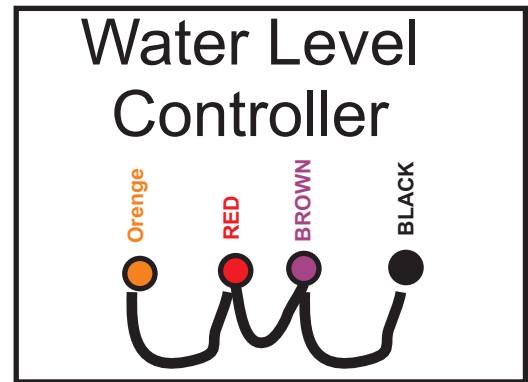


## 4 Core 1 Tank NO Dry Run

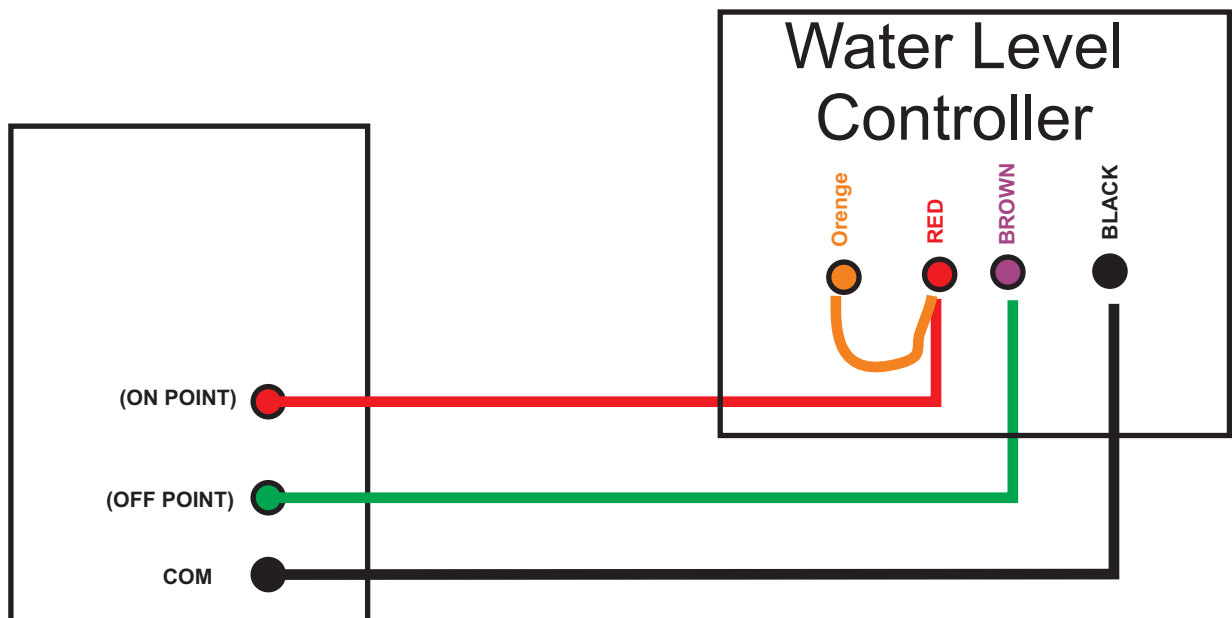


# NPA

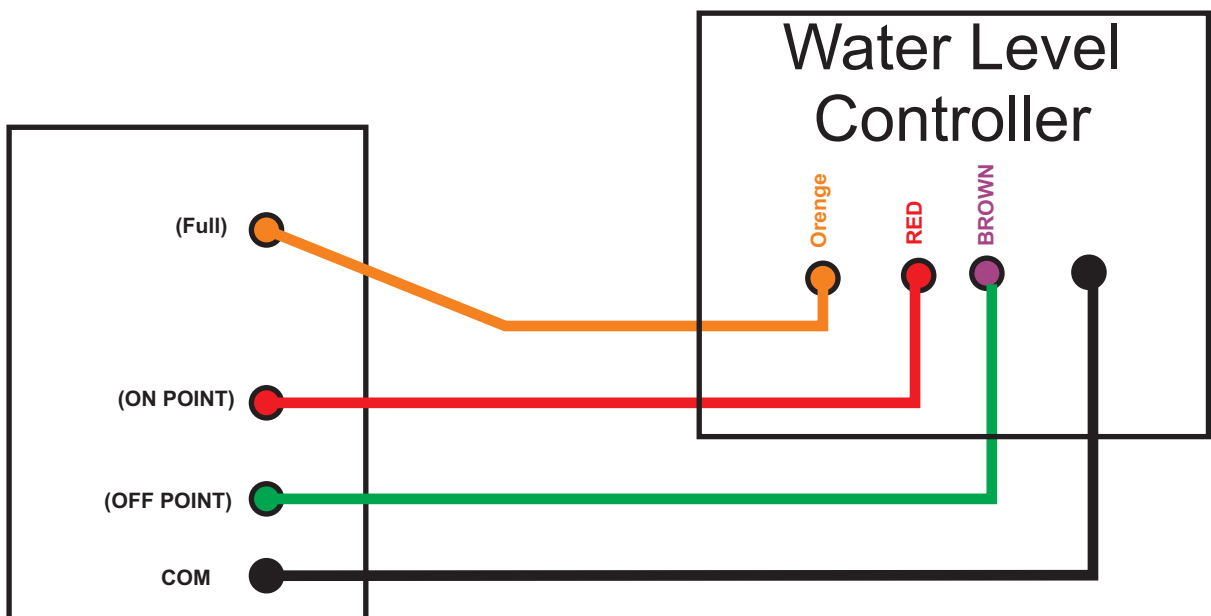
If Sensors are Not  
installed in sump  
Just inter connect all  
the wires as shown



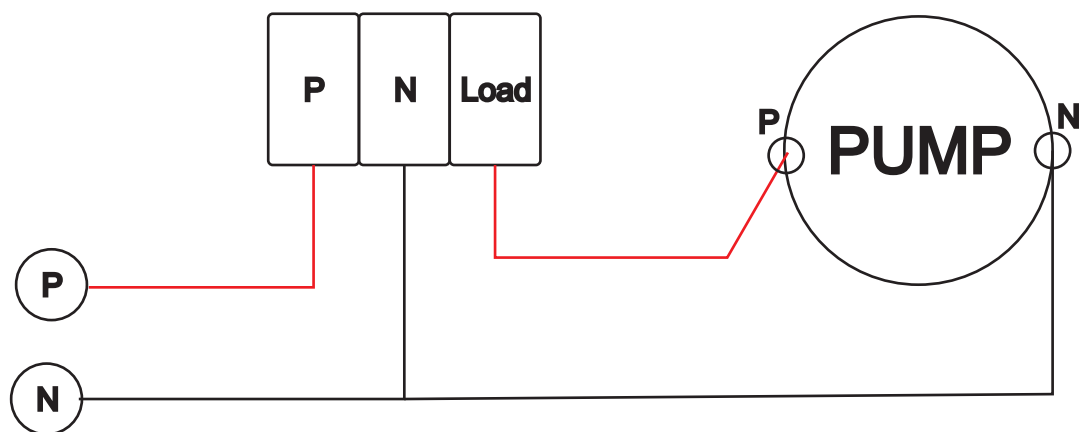
## 4 Core Sump Tank 3 Sensors



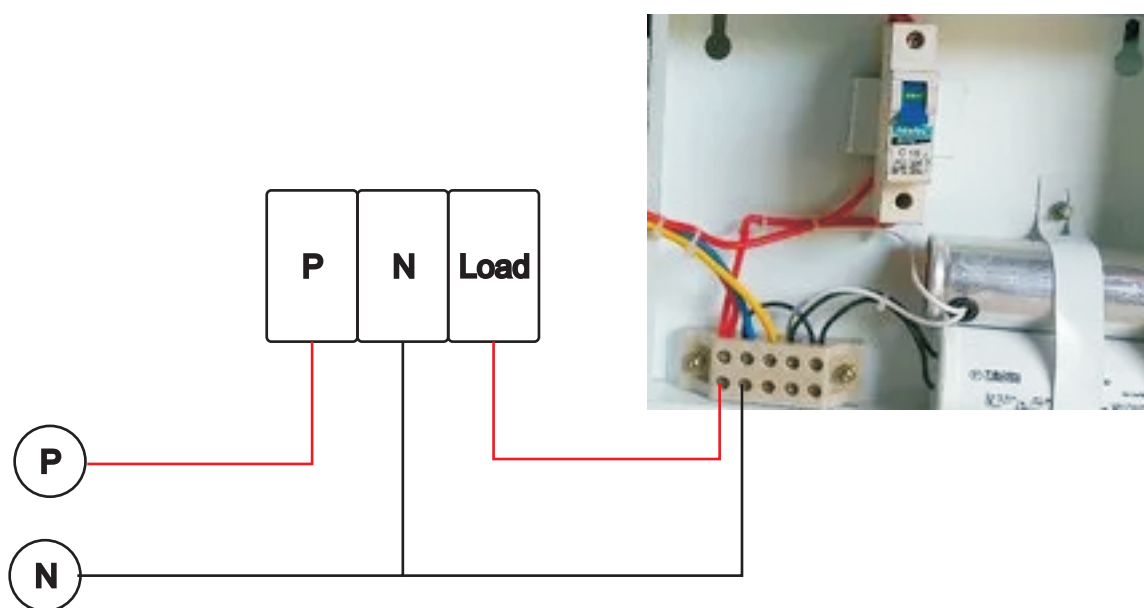
## 4 Core Sump Tank 4 Sensors



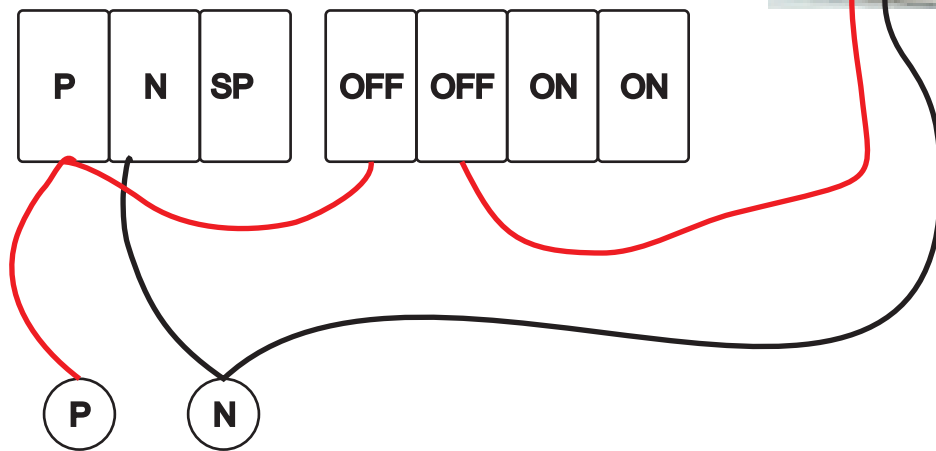
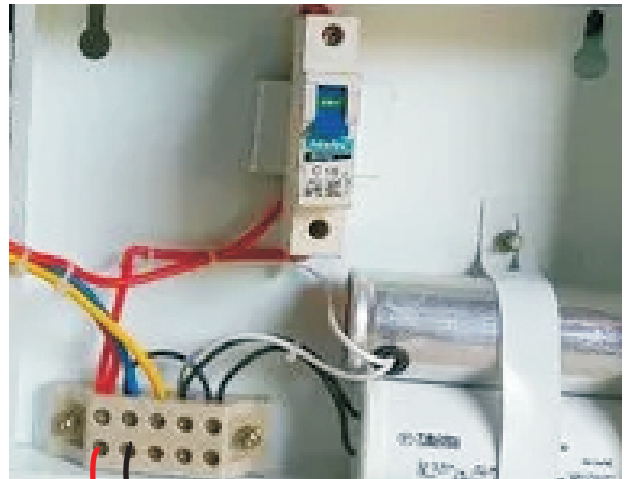
## For Monoblock Pump



## For Starter



# Bore Unit For MCB type Starter



# NPA

## 5 Core 1 Tank

