



# HYDRAULIC HOSES FITTINGS & VALVES

[www.tajenterprises.co](http://www.tajenterprises.co)



## TAJ ENTERPRISES

"Founded in 2018, TAJ Enterprises supply all industrial materials including pneumatics, hydraulic fittings, industrial chemicals, chemical powders, lifting items, safety items power tools, etc. Our competitive pricing coupled with knowledge proves the best service to our clientele. We believe doing things the right way- meaning operating by the standards set by the respective organizations. TAJ prioritize safety, quality, and responsibility for the people and the environment.

"Thus we always strive to Imagine | Innovate | Inspire."

## TAJ ENTERPRISES

*Committed to service!!*

# CLAMPS

A clamp is a fastening device used to hold or secure objects tightly together to prevent movement or separation through the application of inward pressure. There are many types of clamps available for many different purposes.



SS CLIPS



TERRY CLIPS



WIRE CLAMPS



ABA HOSES CLIPS



HEAVY DUTY  
SINGLE BOLT CLAMP



DOUBLE BOLT  
CLAMPS



HYDRAULIC  
CLAMP

## PVC HOSES

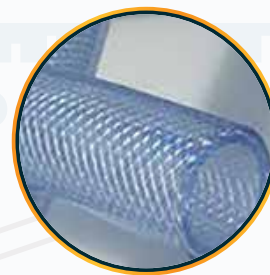
Plastic pipe is a tubular section, or hollow cylinder, made of plastic. It is usually, not necessarily, of circular cross-section, used mainly to convey substances which can flow-liquids and gases (fluids), slurries, powders and masses of small solids.



PVC CLEAR  
HOSES



PVC CLEAR HOSES  
WITH WIRE



PVC CLEAR HOSES  
WITH COTTON BRAIDED



PVC CLEAR  
HOSES PVC WIRE



PVC GREY HOSES



PVC DUCT HOSES



# HOSES

A hose is a flexible hollow tube designed to carry fluids from one location to another. Hoses are also sometimes called pipes (the word pipe usually refers to a rigid tube, whereas a hose is usually a flexible one), or more generally tubing. The shape of a hose is usually cylindrical (having a circular cross section).



**AIR AND  
WATER HOSES**



**FUEL HOSES**



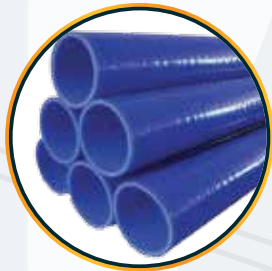
**GAS HOSES**



**HYDRAULIC  
HOSES**



**BRAIDED BELLOW  
HOSES**



**SILICON HOSES**



**PVC LAY FLAT  
DISCHARGE HOSE**



**PU TUBE**



**DIESEL  
HOSES**



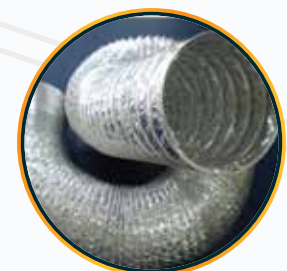
**POLYURETHANE  
HOSES**



**SILICON HOSE WITH  
COPPER WIRE**



**THUNDER HOSE**



**ALUMINIUM  
HOSES**

# INDUSTRIAL FITTINGS

Stainless steel is a common plumbing material for water mains and fittings because it has an exceptionally long lifespan and is resistant to corrosion.



**BRASS FITTING**



**HYDRAULIC FITTING**



**PVC & UPVC FITTING**



**STAINLESS TUBING FITTING**

## COUPLINGS

A coupling is a device used to connect two shafts together at their ends for the purpose of transmitting power. The primary purpose of couplings is to join two pieces of rotating equipment.



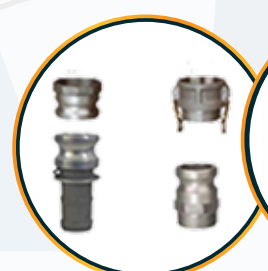
**HOLUMBURY  
FLAT FACE QRC**



**SHAFT  
COUPLING**



**INS  
COUPLING**



**CAMLOCK & LOVE JOY  
COUPLING**

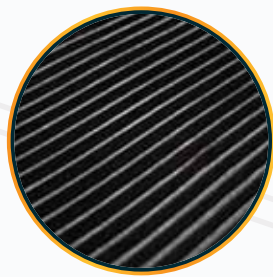


## SHEET AND GASKET

Gaskets are normally made from a flat material, a sheet such as paper, rubber, silicone, metal, cork, felt, neoprene, nitrile rubber, fiberglass, polytetrafluoroethylene (otherwise known as PTFE or Teflon) or a plastic polymer (such as polychlorotrifluoroethylene).



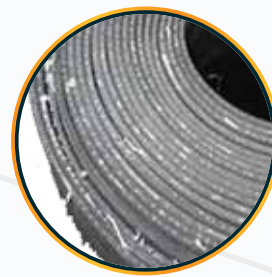
**CNAF GREEN  
GASKET SHEET**



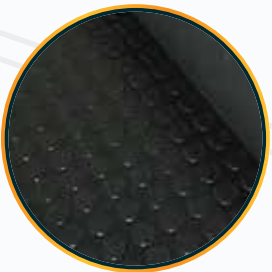
**CORRUGATED  
RUBBER SHEET**



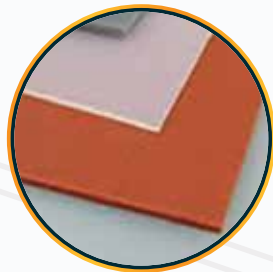
**GASKET FLANGE**



**INSERTION  
RUBBER SHEET**



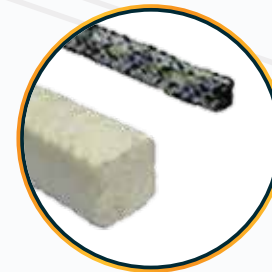
**DOTTED RUBBER  
SHEET**



**SILICON SHEET**



**RUBBER CORD**



**GLAND PACKING**



**OIL SEAL**

## VALVE

A valve is a device or natural object that regulates, directs or controls the flow of a fluid (gases, liquids, fluidized solids, or slurries) by opening, closing, or partially obstructing various passageways.



**Y STRAINER  
VALVE**



**GATE VALVE**



**CHECK VALVE**



**SOLENIOD VALVE**



**BALL VALVE**



**BUTTERFLY  
VALVE**





**BUTTERFLY VALVE**



**BALL VALVE**



**3PC BALL VALVE**



**WATER METER**

## FLANGE

A flange is an external or internal ridge, or rim (lip), for strength, as the flange of an iron beam such as an I-beam or a T-beam; or for attachment to another object, as the flange on the end of a pipe, steam cylinder, etc.,



**BLIND FLANGE**



**SLIPON FLANGE**



**WELD NECK FLANGE**



**GASKET FLANGE**

## INDUSTRIAL PIPELINES

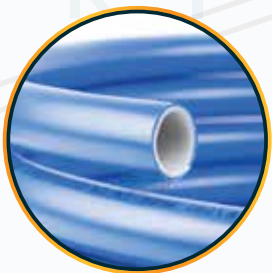
Within industry, piping is a system of pipes used to convey fluids (liquids and gases) from one location to another. Plumbing is a piping system with which most people are familiar, as it constitutes the form of fluid transportation that is used to provide potable water and fuels to their homes and businesses.



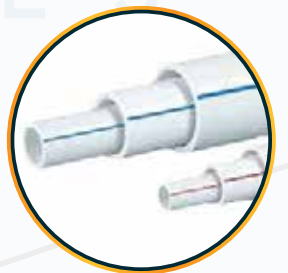
**PVC PIPES**



**CPVC PIPES**



**COMPRESSOR HOSE PIPING**



**UPVC PIPES**



**SOLAR PIPING**

# INDUSTRIAL LIFTING AND SAFETY EQUIPMENTS

Lifting equipment is any work equipment for lifting and lowering loads, and includes any accessories used in doing so (such as attachments to support, fix or anchor the equipment). Examples of lifting equipment include: overhead cranes and their supporting runways. vehicle tail lifts and cranes fitted to vehicles.



**HOOKS & SLINGS**



**BOW-SHACKLE  
& D-SHACKLE**



**CHAIN PULLEY BLOCK  
WITH GEAR TROLLEY**



**THUNDER HOSE**



**VERTICAL  
PLATE LIFTING**



**PULLING AND  
LIFTING MACHINE**



**HORIZONTAL  
PLATE LIFTING**



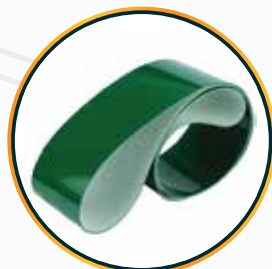
**SAFETY  
EQUIPMENT**

## INDUSTRIAL TIMING & V-BELTS

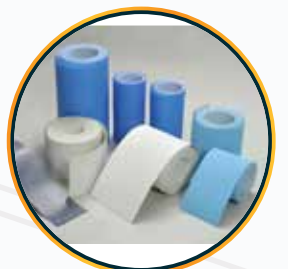
A timing belt, timing chain, or cambelt is a part of an internal combustion engine that synchronizes the rotation of the crankshaft and the camshaft, so that the engine's valves open and close at the proper times during each cylinder's intake and exhaust strokes.



**TIMING & V - BELTS**



**GREEN PVC  
CONVEYOR BELT**



**NITTO  
CONVEYOR BELTS**

**TAJ**

ENTERPRISES

[www.tajenterprises.co](http://www.tajenterprises.co)



# INDUSTRIAL BEARINGS

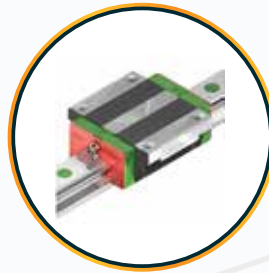
A bearing is a machine element that constrains relative motion to only the desired motion, and reduces friction between moving parts. The simplest form of bearing, the plain bearing, consists of a shaft rotating in a hole. Lubrication is used to reduce friction.



THRUST BEARING



LINEAR BEARINGS



HIWIN BEARINGS



PEDESTAL BEARING



BALL BEARINGS

# PNEUMATIC & HYDRAULICS VALVES AND FITTINGS

Both pneumatics and hydraulics are applications of fluid power. Pneumatics uses an easily compressible gas such as air or a suitable pure gas - while hydraulics uses relatively incompressible liquid media such as oil.



SOLENOID VALVES



FRL UNIT



PNEUMATIC FITTINGS



HYDRAULIC VALVES



HYDRAULIC POWERPACK

## OIL & GREASE FITTING

A grease fitting, grease nipple, Zerk fitting, or Alemite fitting is a metal fitting used in mechanical systems to feed lubricants, usually lubricating grease, into a bearing under moderate to high pressure using a grease gun.



OIL GUN



GREASE PUMP



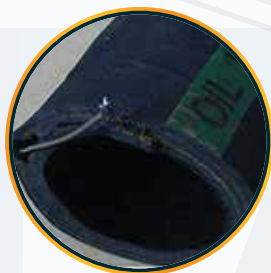
GREASE NIPPLE



GREASE FITTING



GREASE HOSES



OIL HOSES



ROTARY PUMP

## MANUFACTURING MACHINE & EQUIPMENT

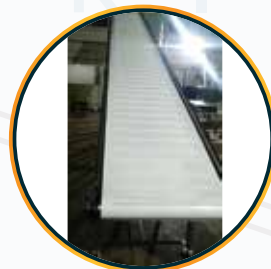
Manufacturing is the making of goods by hand or by machine that upon completion the business sells to a customer. Items used in manufacture may be raw materials or component parts of a larger product. The manufacturing usually happens on a large-scale production line of machinery and skilled labor.



BLOWER



DUST COLLECTOR



HEAVY DUTY CONVEYOR MACHINE



RUBBER CONVEYOR MACHINE

# GAS AND WELDING EQUIPMENTS

Gas welding is a welding process that melts and joins metals by heating them with a flame caused by a reaction of fuel gas and oxygen. The most commonly used method is Oxyacetylene welding, due to its high flame temperature. The flux melts, solidifies and forms a slag skin on the resultant weld metal.



**WELDING  
ROD**



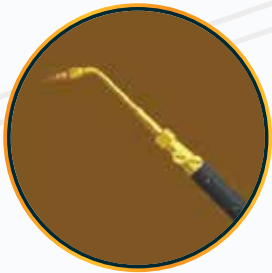
**TUNGSTEN  
ROD**



**BRASS  
BRAZING ROD**



**WELDING  
MACHINE**



**WELDING  
TORCH**

ENTERPRISES



 **Moiz Tajpurwala**

 **+91-7974785031**

 **+91-9669520053**



# **TAJ ENTERPRISES**

## **INDUSTRIAL SOLUTION**

SHOP NO. 2, Shree Chambers, Gurudwara Road,  
416, Ganesh Peth, Pune - 411002

Web: [www.tajenterprises.co](http://www.tajenterprises.co) E-mail: [tajenterprises51@gmail.com](mailto:tajenterprises51@gmail.com)