



SHIVANGANA STEELS

ISO 9001:2015 Certified Company



SHIVANGANA STEELS are leading and well recognized names in the field of providing complete range of Hot Dip Perforated Cable tray, G.I Perforated Cable tray, Ladder tray, Raceway Hot Dip Flat, GI Flat, Powder Coating cable tray, Hot Dip Horizontal Bend, Vertical Bend, Internal Cable tray, Vertical Support, Angle Ladder, Chemical earthing , G.I Rod, Powder Coating Slotted Angle, Shelve, Gratings, Panel C Channel G.I Slotted Angle, Heavy Duty Rack, Structure Rack and all type of Fabrication item as per required.

As market leaders in Cable Tray and Ladder Tray field in India, we "SHIVANGANA STEELS" well utilize our facilities so as to manufacture and market complete range of products including Slotted Angle Racks and Accessories, Rack Storage Systems and Industrial Storage Systems. Established in the year 2005, we have been successfully catering to diverse storage system demands of industries including Semi-Govt.Telecom and Government Agencies, Corporate organizations and different Industrial sectors.

Further, the fully equipped and latest fabrication machinery and sound process back-up also helps us to bring substantial reduction in terms of production lead-as well as assist us in meeting the competitive product pricing requisites among competitors. With our endeavor towards delivering best value for client's money, the team of technical design engineers also ensure tailor made solutions are offered as per the estimates of our client's requirements.





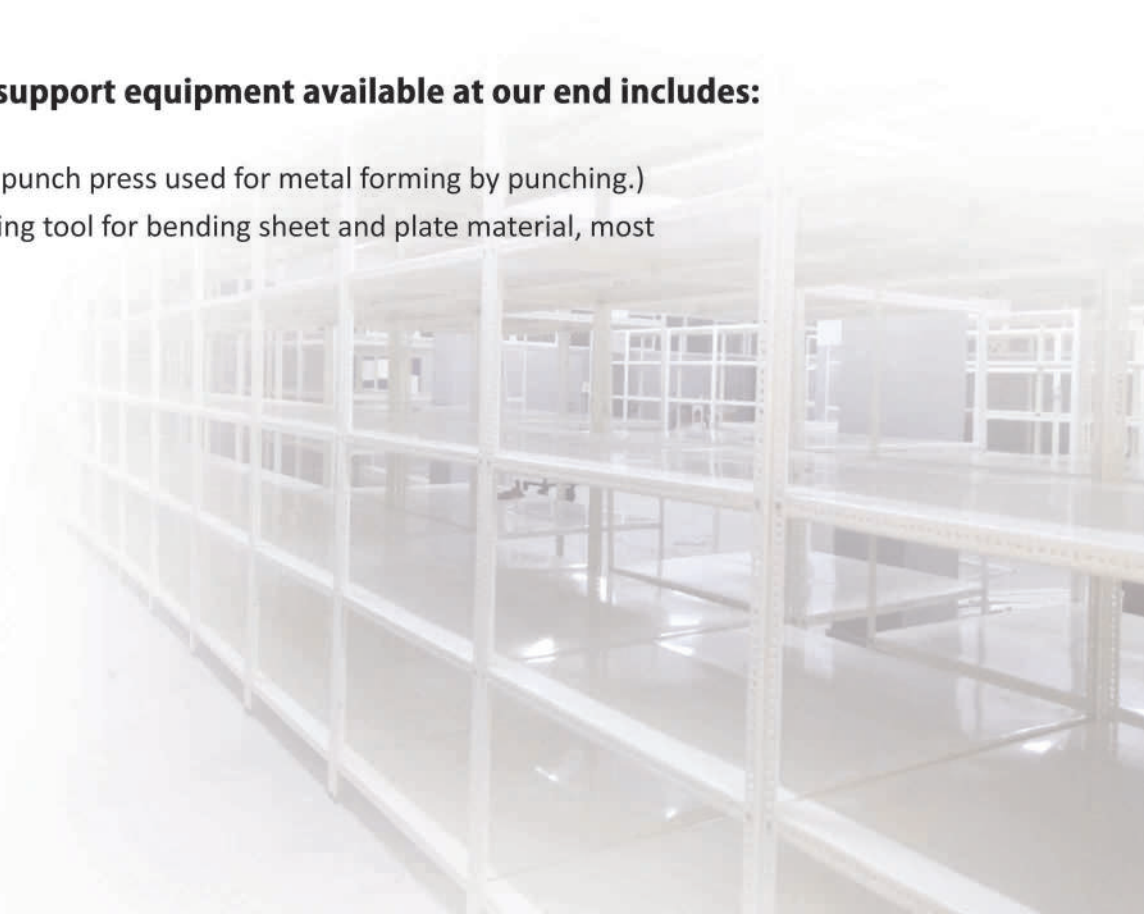
Infrastructure Support

We have with us excellent infrastructural support that is backed by team of well qualified engineers. The team allows us to well handle the production processes divided under separate divisions including –

- Product design
- Manufacturing
- Fabrication
- Quality control
- Post Production processes
- Some of the strengths of our infrastructure include
- Stage wise inspections during production process with calibrated instruments
- Manufacturing items using latest technology based CNC machinery to achieve high accuracy in outputs
- Final finished products provided is superior grade epoxy powder coated finish using manual equipment

Some of the production support equipment available at our end includes:

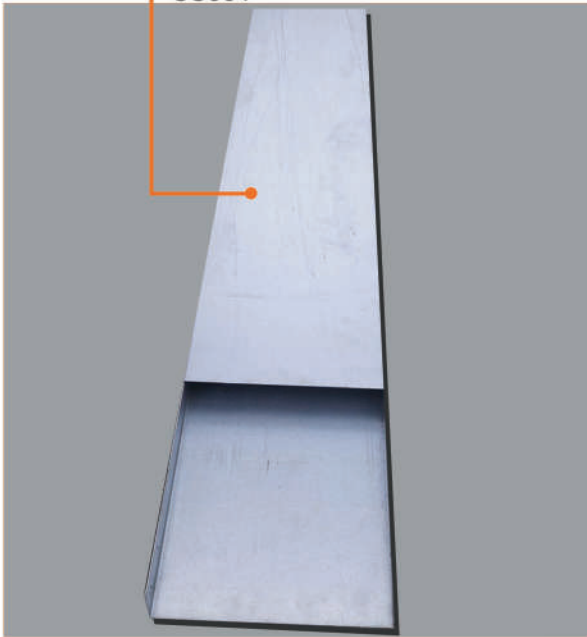
- Turret Punch Press (A type of punch press used for metal forming by punching.)
- Press Break (A machine pressing tool for bending sheet and plate material, most commonly sheet metal.)
- Shearing Machine
- Power presses
- Spot Welding Machine
- Mig Welding Machine
- Surface Grinder
- Quality Control equipment
- Perforation Machine



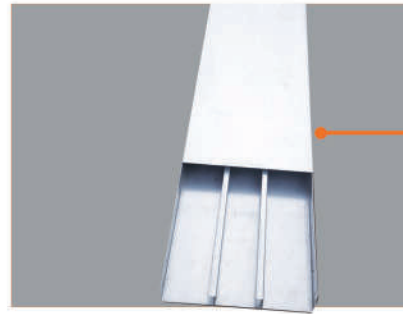
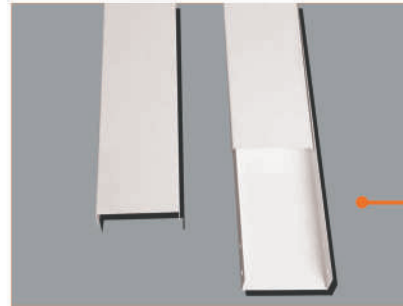


RACEWAY WITH COVER

GI RACEWAY
SS001



POWDER COATED
SS002



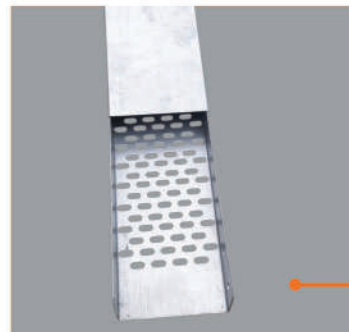
COMPART RACEWAY
SS003

Product Range

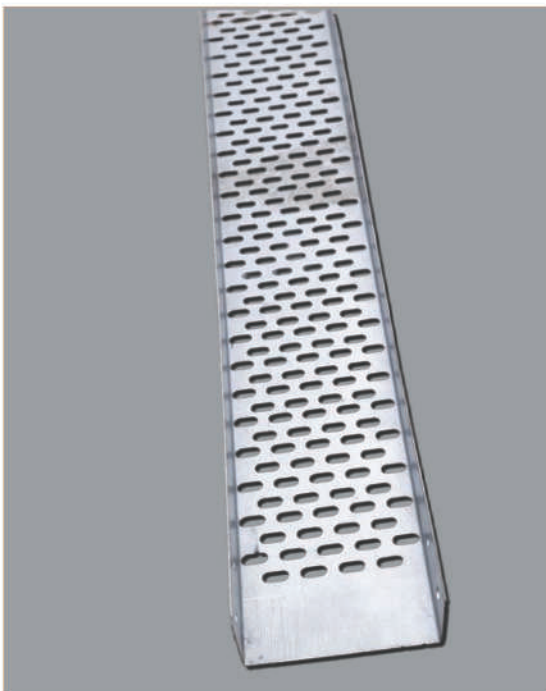
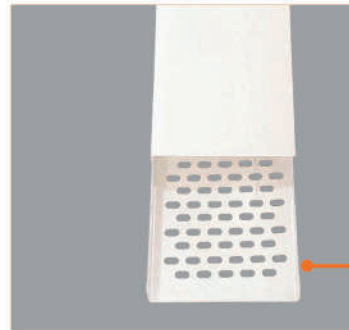
Type	POWDER COATED / HOT DIP / GALVANIZED
Size	WIDTH 50mm-900mm / LENGTH 2.5METER

PERFORATED TYPE CABLE TRAY

GI PERFORATED
TRAY
SS004



POWDER COATED
SS005



SS006

Product Range

Type	POWDER COATED/HOT DIP/GALVANIZED
Size	WIDTH 50 MM TO 900MM/LENGTH 2.5METER



LADDER TYPE CABLE TRAY

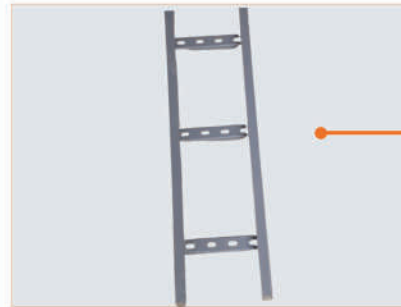


SS007



GI LADDER TRAY

SS008



POWDER COATED

SS009

Product Range

Type	POWDER COATED/HOT DIP/GALVANIZED
Size	WIDTH 50 MM TO 900MM/LENGTH 2.5METER

TRAY ACCESSORIES



C CHANNEL
SS010



INSIDE BEND
SS011



THREADED ROD
SS012



JOINTER
SS013



ANCHOR FASTNER
SS014



DROPING ANCHOR
SS015

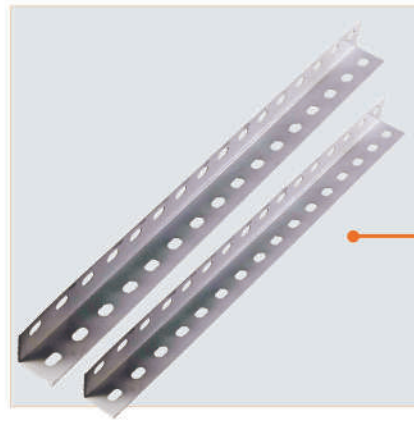


RACKS

RACK
SS017



SHELVES
SS016



ANGLE
SS018



DISPLAY RACK
SS009



MEZZANINE FLOOR
SS020



STORAGE RACK
SS021



TABLE
SS022



HEAVY DUTY RACK
SS023



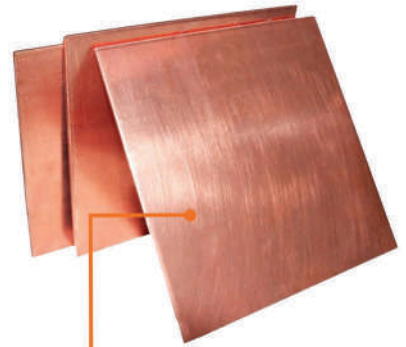
EARTHING MATERIALS



CONDUIT PIPE
SS030



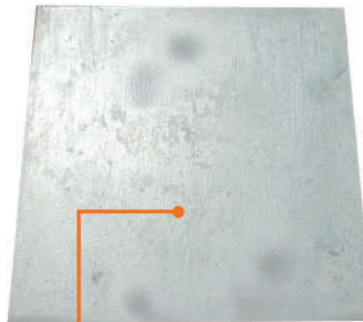
COPPER STRIP
SS031



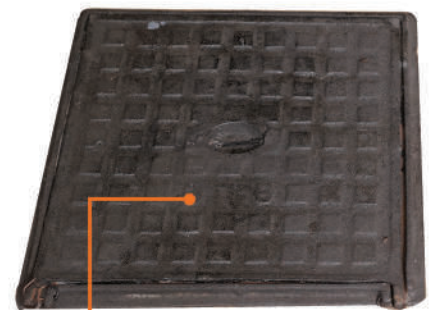
COPPER PLATE
SS032



GI EARTHING STRIP
SS033



GI PLATE
SS034



PIT COVER CAST IRON
SS035



CHEMICAL BAG
SS036



PVC PIT COVER
SS037



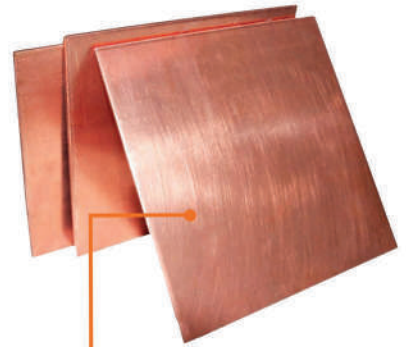
EARTHING MATERIALS



CONDUIT PIPE
SS030



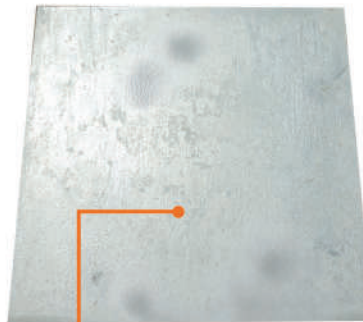
COPPER STRIP
SS031



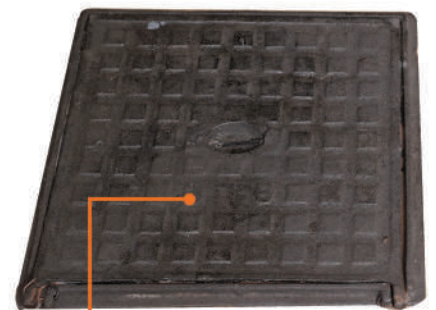
COPPER PLATE
SS032



GI EARTHING STRIP
SS033



GI PLATE
SS034



PIT COVER CAST IRON
SS035



CHEMICAL BAG
SS036



PVC PIT COVER
SS037



EARTHING MATERIALS



GI FLAT
SS038



GI ANGLE
SS039



M/S PIPE
SS040



GI PIPE
SS041



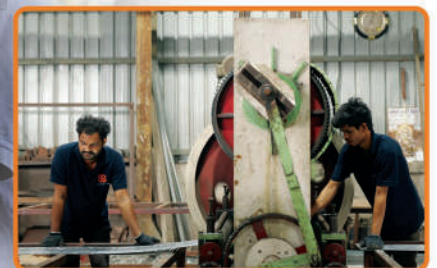
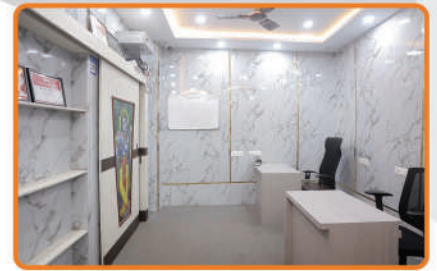
WIRE & CABLE
SS042



PVC CONDUIT
SS043



SHIVANGANA




Reliance
Industries Limited


Reliance
Digital
Retail Limited

VOLTAS
A TATA Enterprise


SABYASACHI
CALCUTTA

 **baazar**

 **UNIVERSAL** MEP PROJECTS
& ENGINEERING
SERVICES LIMITED
A 100% wholly owned subsidiary of Voltas Limited
A TATA Enterprise

 **PACE**
DIGITEK


Shyam Ferro


LINEAGE POWER

 **RNS**
INFRASTRUCTURE

D2 INTERNATIONAL


YAMAI
GROUP

and many more

**Office Address :**

3, RAJA GOPI MOHAN
STREET, MANICKTALA,
KOLKATA-700006. INDIA

Factory : [1]

237A/1B SATIN SEN SARANI,
BAGMARI,
KOLKATA-54

Factory : [2]

NH-6, JALAN INDUSTRIAL
COMPLEX GATE NO. 1,
VILL: BANIARA, PO: BEGRI,
PS: DOMJUR,
HOWRAH – 711411.

NISHANT : +91 9230625234
SAMIR : +91 9230625236

DIBYENDU : +91 9230625230

SUBHOJIT : +91 9230625237

SHOP :

27 NO EZRA STREET
KOLKATA - 700001

RITESH : +91 9875410726
RISHI : +91 9804343468

E-mail :

shivanganasteels@gmail.com

Web :

www.shivanganasteels.com