



# Coimbatore Aeration Accessories

Everything in Oil Hydraulics Since 1987

*We are a One-stop shop for all your Hydraulic requirements.*

*We are in this field since the past 30 odd years and have a very strong, satisfied clientele of leading Corporate & Business houses in the field of Hydraulics.*



Authorised Dealer

**polyhydron**  
Pumps & Valves

**DYNAMATIC**  
TECHNOLOGIES LIMITED  
Gear Pumps

**walvoil**  
HYDRAULIC CONTROL SYSTEMS  
Mobile Valves

**Huade**  
Pumps & Valves

**HYLDC**  
Hydraulic Fittings & Valves

**hydroline**  
PRODUCTS  
Filters & Accessories

**A+S HYDRAULIC**  
Hydro Motors & Steering Units

**WIKAI**  
Measuring Instruments

**DEMCON**  
Gear coupling & Gauge Isolators

**OLAER**  
FARWELL CHRISTIE  
Accumulators & Oil Coolers

**MPFILTRI**  
Filters & Power Pack  
Accessories

**atos**  
Pumps & Valves

218, Rangakonar Street, Kattoor, Coimbatore - 641 00 9.

Ph: 0422 - 2235297, 2232867, 4397215

Mob: 81482 67660, 93631 03789

Email: caacbe@gmail.com

web: [www.coimbatoreaeration.com](http://www.coimbatoreaeration.com)





## RADIAL PISTON DOUBLE PUMPS Model : 2RC\*\*\*\*

Ref. No. D 09046

Release 10 / 2021

ENGINEERING - 1 of 4

A Polyhydron Group Company

### Description

Model **2RC\*\*\*\*** are rugged Radial Piston Double Pumps with 3, 5 or 7 pumping elements in each section of the pump. These pumps are valve controlled and there is no restriction on direction of rotation of the pump.

These pumps can be submerged in oil or externally mounted above oil level.

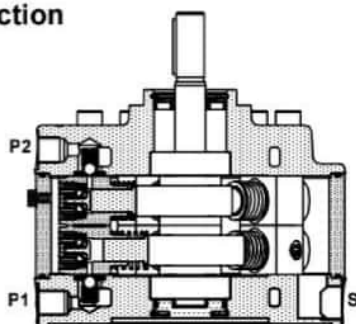
Pumps with model code **2RCE\*\*\*** have extension shaft for through drive and are available with extension bracket assembly for coupling a pump having standard flange as per ISO 3019/1.

They are available with 21 flow combination and 7 pressure ratings.

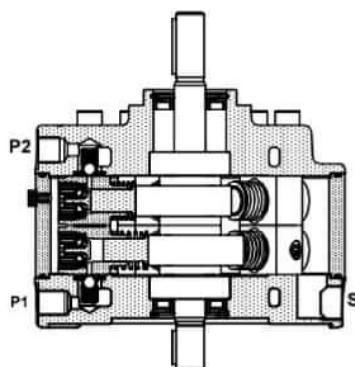
These pumps give fixed output per revolution of the shaft.



### Section

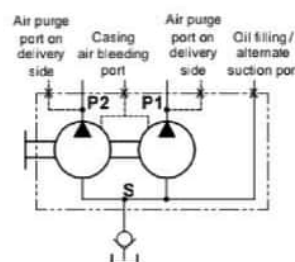


Model : 2RC\*\*\*

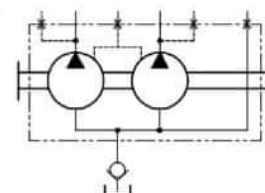


Model : 2RCE\*\*\*

### Hydraulic symbol



Model : 2RC\*\*\*



Model : 2RCE\*\*\*

### Technical specifications

Designation	:	2RC is a basic Radial piston double pump with casing. 2RCE is a Radial piston double pump with casing and extension shaft.					
Design	:	Radial piston, valve controlled.					
No. of elements	:	3, 5 or 7, each at P1 and P2 port depending upon flow requirement.					
Mounting	:	Face mounting with Air purge port at highest level.					
Interface	:	Factory standard.					
Direction of rotation	:	2RC - No restriction on direction of rotation. 2RCE - Depends upon the direction rotation of pump attached.					
Connection	:	Suction port - G1/2 female. Delivery (port P1 and P2) - G3/8 female.					
Speed range	:	300 to 2000 r/min.					
Max. Suction Head	:	At no time allow the oil level in the tank to fall 500 mm below the axis of the pump, when the pump is mounted horizontally, or 500 mm below the mounting face of the pump, when the pump is mounted vertically.					
Flow and Pressure	:	Refer Table no. 1					
Torque limitations	:	Input drive shaft - 75 Nm Extension shaft - 53 Nm					
Hydraulic medium	:	Mineral oil.					
Temperature range	:	-20°C to +80°C.					
Viscosity range	:	10 cSt to 100 cSt.					
Fluid cleanliness required	:	ISO 4406 20/18/15 or better.					
Mass	:	Model :	2RC3	2RCE3	2RC5	2RCE5	2RC7 2RCE7
		Kg :	11.2	11.9	16.2	17	17.71 18.41





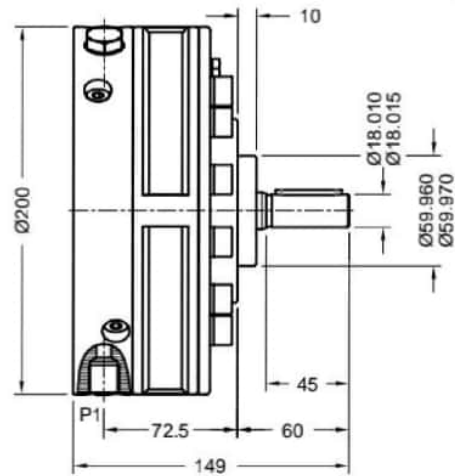
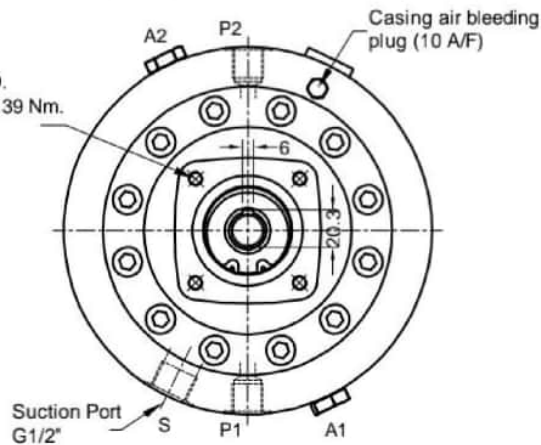


## Unit dimensions

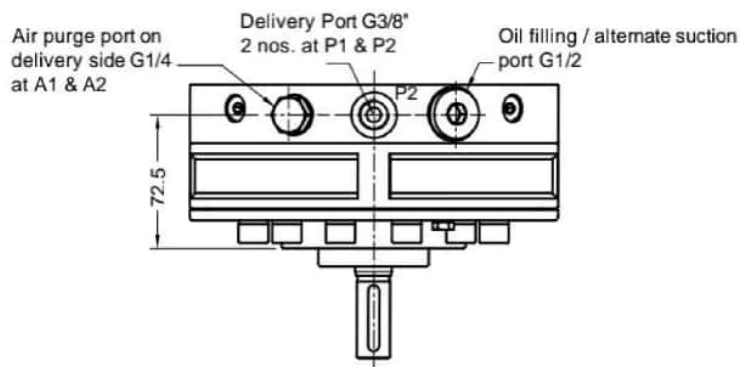
### Pump without extension shaft

#### Model - 2RC3

M8 x 12 deep,  
4 nos on 80 P.C.D.  
Tightening torque 39 Nm.



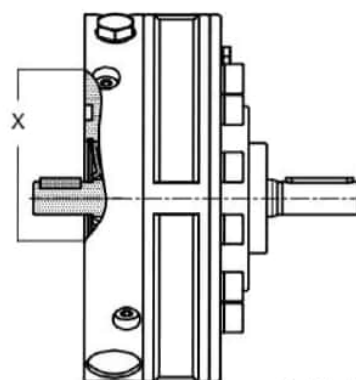
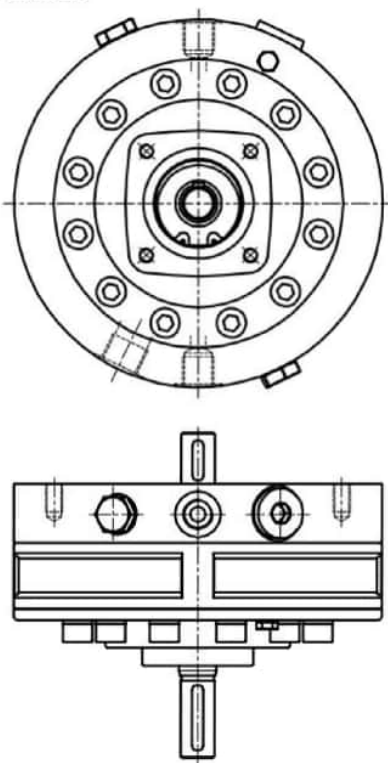
Dimensions in mm.



### Pump with extension shaft

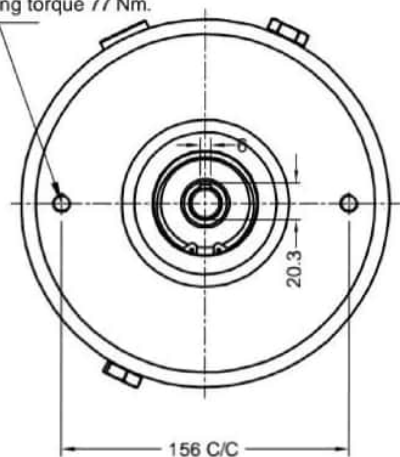
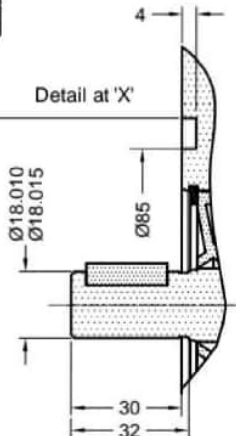
#### Model - 2RCE3

Extension bracket mounting  
M10 x 17 deep, 2 nos.  
Tightening torque 77 Nm.



Detail at 'X'

Extension bracket Ø101.600  
location diameter Ø101.654

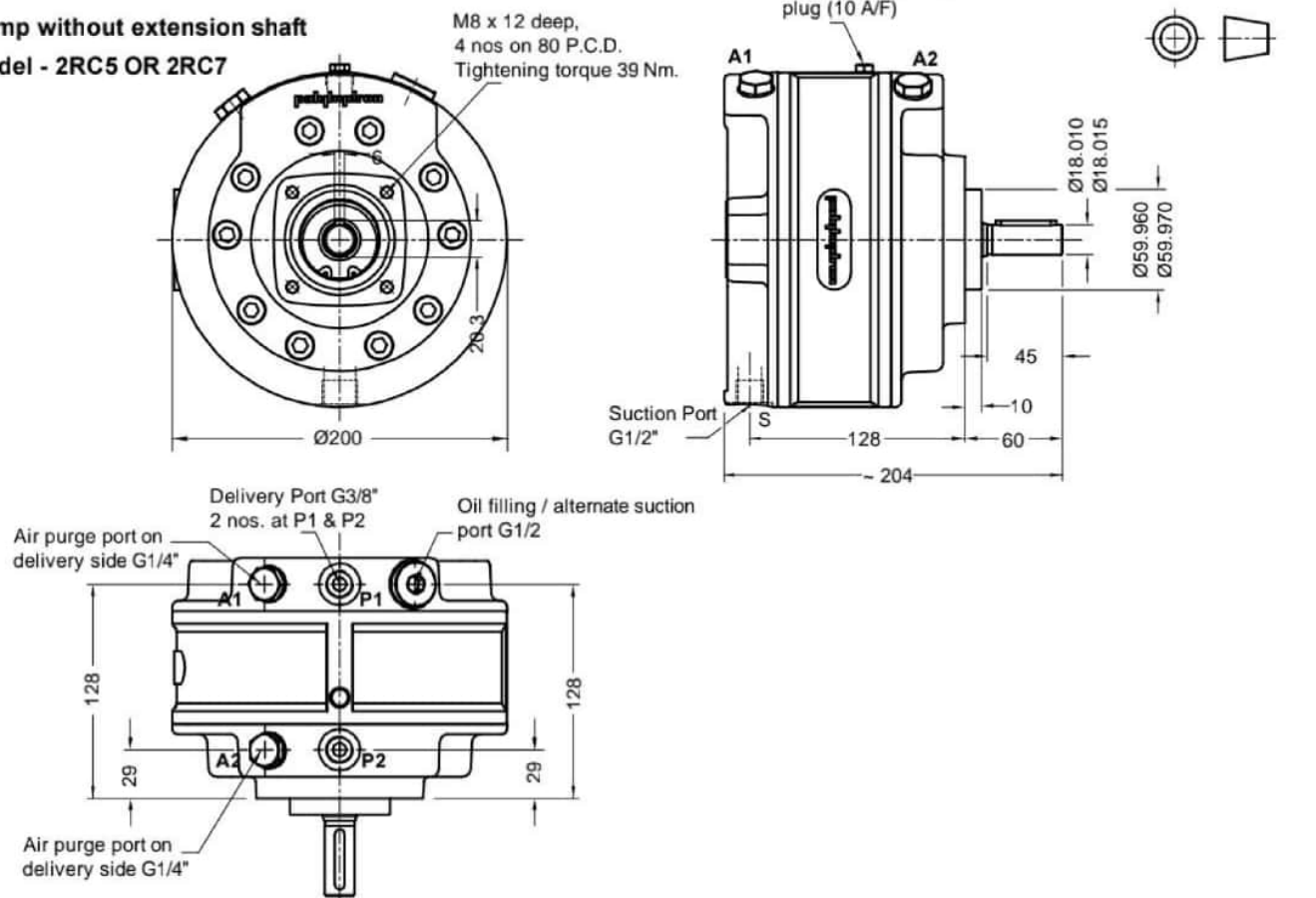




### Unit dimensions

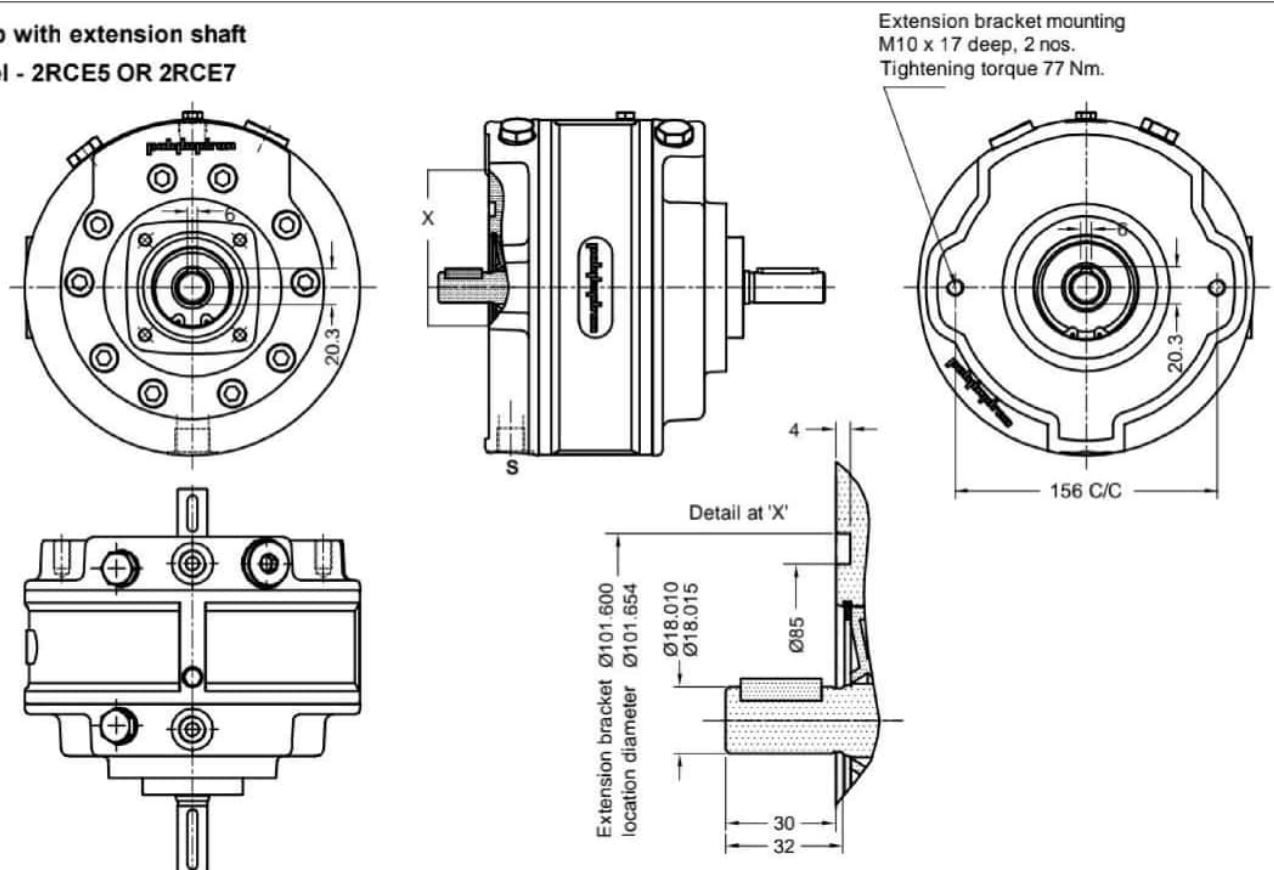
#### Pump without extension shaft

Model - 2RC5 OR 2RC7



#### Pump with extension shaft

Model - 2RCE5 OR 2RCE7



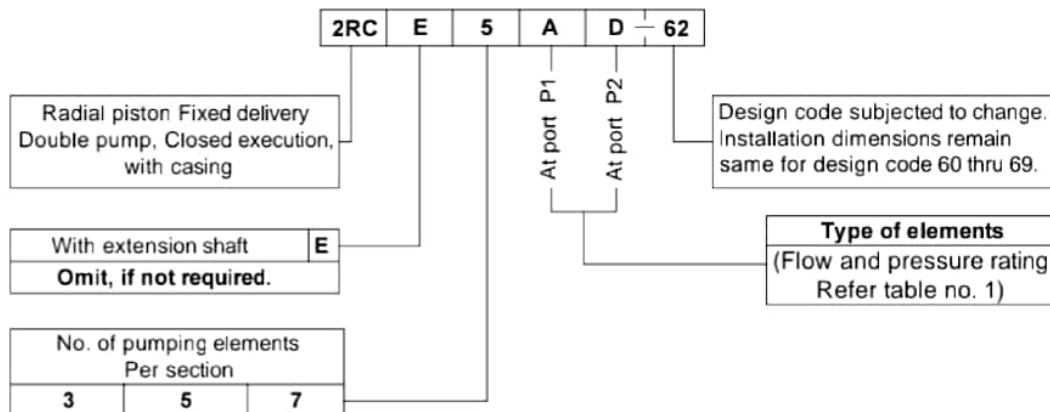


Performance Table no. 1

No. of pumping elements per section	Element type	Geometrical displacement in cm <sup>3</sup> /r	Pump output in l/min At 1450 r/min	Maximum Operating pressure in bar	Pressure in bar													
					50	100	150	200	250	300	350	400	450	500	550	600	650	700
					Power required per section to drive the pump in kW													
3	Z	0.69	0.9	700	0.10	0.19	0.29	0.39	0.48	0.58	0.68	0.77	0.87	0.96	1.06	1.16	1.25	1.35
5		1.15	1.5		0.16	0.32	0.48	0.64	0.80	0.96	1.13	1.29	1.45	1.61	1.77	1.93	2.09	2.25
7		1.61	2.2		0.23	0.45	0.68	0.90	1.13	1.35	1.58	1.80	2.03	2.25	2.48	2.70	2.93	3.15
3	A	1.20	1.6	550	0.17	0.34	0.51	0.69	0.86	1.03	1.20	1.37	1.54	1.71	1.89			
5		2.00	2.7		0.29	0.57	0.86	1.14	1.43	1.71	2.00	2.29	2.57	2.86	3.14			
7		2.80	3.8		0.40	0.80	1.20	1.60	2.00	2.40	2.80	3.20	3.60	4.00	4.40			
3	B	1.89	2.6	450	0.27	0.54	0.80	1.07	1.34	1.61	1.88	2.14	2.41					
5		3.15	4.3		0.45	0.89	1.34	1.79	2.23	2.68	3.13	3.57	4.02					
7		4.41	6.0		0.63	1.25	1.88	2.50	3.13	3.75	4.38	5.00	5.63					
3	C	2.70	3.7	350	0.39	0.77	1.16	1.54	1.93	2.32	2.70							
5		4.50	6.2		0.64	1.29	1.93	2.57	3.22	3.86	4.50							
7		6.30	8.6		0.90	1.80	2.70	3.60	4.50	5.40	6.30							
3	D	3.18	4.3	300	0.45	0.91	1.36	1.81	2.26	2.72								
5		5.30	7.2		0.75	1.51	2.26	3.02	3.77	4.53								
7		7.42	10.1		1.06	2.11	3.17	4.23	5.28	6.34								
3	E	3.69	5.0	250	0.53	1.05	1.58	2.10	2.63									
5		6.15	8.4		0.88	1.75	2.63	3.50	4.38									
7		8.61	11.7		1.23	2.45	3.68	4.90	6.13									
3	F	4.23	5.8	200	0.60	1.21	1.81	2.41										
5		7.05	9.6		1.00	2.01	3.01	4.02										
7		9.87	13.5		1.41	2.81	4.22	5.63										

1kW = 1.34 hp

## Ordering code



Note : For Bell housing refer Data sheet no. D 09035 and For extension bracket refer Data sheet no. D 09090.  
For commissioning of pump refer datasheet no. D 11200 P.

All rights reserved.  
Subject to change without notice.  
Due to continuous improvements in the design of the product, the actual product supplied may look different than shown above, but will have same mounting dimensions.  
For critical applications, please ask for certified installation drawing.

All rights reserved.  
Subject to revision

