



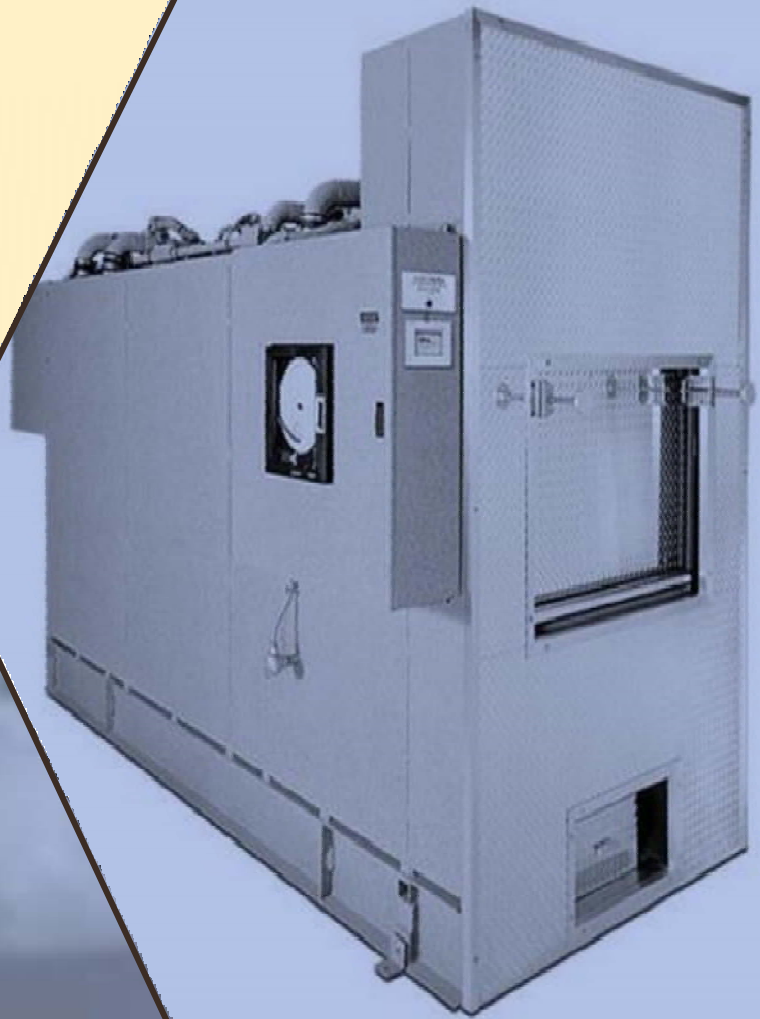
MSME

MICRO, SMALL & MEDIUM ENTERPRISES

सूक्ष्म, लघु एवं मध्यम उद्यम

OUR STRENGTH • हमारी शक्ति

Ministry of MSME, Govt. of India



OSSPL[®]

OM SAI SWARAHANTRA PVT. LTD

"SAVE ENERGY SAVE ENVIRONMENT"



Table Of Content

<u>COMPANY PROFILR</u>	3
<u>HUMAN CREMATION SYSTEM</u>	4-9
OSSPL-HG	4
OSSPL-HE	5
OSSPL-HHD-01	6
OSSPL-HMF-01	7
OSSPL-IW	8
OSSPL-PYRE	9
<u>PET CREMATION SYSTEM</u>	10-14
OSSPL-AG	10
OSSPL-AE	11
OSSPL-PET-HD-01	12
OSSPL-SAG	13
OSSPL-SAE	14
POLLUTION CONTROL SYSTEM	15
FURNACE EQUIPMENTS	16
CONTROL EQUIPMENTS	17



Contact Information

Corporate Headquarters
D2-453 A SHIV DURGA VIHAR,
LAKKARPUR, SURAJKUND,
FARIDABAD, HARYANA (121009) -
INDIA

Phone
(+91) 7607602764
(+91) 9315585499

Visit us online at
www.ossplgroup.in
www.cremationfurnace.in

We Accept



V.P MAURYA
CEO/ DIRECTOR
swarahantra@gmail.com

Supplies
salesossplgroup@gmail.com



"Like" Us on Facebook:

<https://www.facebook.com/swarahantra>



/Follow us on

Instagram

<https://www.instagram.com/ossplgroup/>



YouTube

}Search OM SAI SWARAHANTRA PVT.LTD

<https://www.youtube.com/channel/UCPEFjIUcGFQF7YJrdds9g>



The OSSPL Advantage

OSSPL Established in 2015, Om Sai Swarahantra Pvt Ltd is engaged in manufacturing of Human Cremation Furnace and Animal Cremation Furnace etc. We have achieved expertise in manufacturing to the requirements of our clients exactly as per their specifications. We emphasize on stringent quality standards in order to ensure that the products provided to our clients is always optimum to its level.

As one of the fastest-growing manufacturing industry OSSPL in technology and research area. Our manufacturing team consist of expert and technocrats with experience of 8 years. **OSSPL** provides technologically advanced human crematory equipment and animal cremators for low and high volume operation as Improved Wood Based 'OSSPL' Cremation Furnace, CNG/LPG and Electrical Cremation Furnace. We also manufactured Composter, Sheds, Solar Street LED Light, Grass Cutter, Wheat/ Paddy Cutter, Air Blower, Solar Air Heater, Air/Gas Filter (cyclone, scrubber etc.).

OSSPL provides custom technical solutions in crematory system and composter to solve our clients most demanding requirements. We pride ourselves in our customer service and sterling credibility in the market of PAN India. We implement best practices in our processes in order to offer best quality products and on time. All our processes are aligned to save time and this helps us to deliver wider variety of products, much faster.

Purpose: To be a leader in the manufacturing industry by providing enhanced services, relationship and profitability.

Vision: To provide a solution to save the environment and earth , and reduce the pollution for better our future.

Mission statement: To build long term relationships with our customers and clients and provide exceptional customer services by pursuing business through innovation and advanced technology.

Core values: We believe in treating our customers with respect and faith. We grow through creativity, invention and innovation. We integrate honesty, integrity and business ethics into all aspects of our business functioning.

Goals: Regional expansion in the field off manufacturing & production management, and develop a strong base of key customers. Increase the assets and investments of the company to support the development of services. To build good reputation in the field of and property management and become a key player in the industry.

In closing, doing business with Om Sai Swarahantra Pvt Ltd Company assures you the highest quality of manufacturing, workmanship, technology, and customer service in the industry. Please feel free to call us at any time with any questions you may have. We look forward to working with you and providing you with the Service.

We wish to thank all of our continued clients for their loyalty and placing their trust in our team.

Sincerely Appreciated,

OM SAI SWARAHANTRA PVT LTD



राष्ट्रीय स्वच्छ गंगा मिशन
National Mission for Clean Ganga





Human Cremation System



This is a eco-friendly way to cremate a dead body with the heat evolved from the burning of LPG/CNG/Diesel, which can fulfill the need of recent problem associated with the disposal of dead bodies.

OSSPL-HG Gas Based Cremation System

The OSSPL-HG is our Super Duty Cremation system. It features a super large primary chamber and a uniquely designed multi-faceted secondary chamber. The OSSPL-HG has a chamber capacity of 150-250 kg. The average cremation time is approx. 40-50 minutes or less and can perform back to back cremations with no cool down between cremations. This is our most advanced, manual and automated model manufactured. The heat evolve from the burning of LPG/CNG/Diesel is reflected back and store in the combustion area so that inside temperature reaches high.



Models & Specifications:-

Model	Dimension (mm)	Door Type	Weight	Temp.	Chimney	Panel	Warranty
OSSPL-HG01	L=3370/ W=1900/ H=1800	Hinge Type	15 ton	700-1100	20ft	2-6 kw	1 year "Best in Class"
OSSPL-HG02	L=3370/ W=1900/ H=2800	Rise & Fall Manually Operated	21 ton	700-1100	100ft	14 kw	2 year "Best in Class"
OSSPL-HG03	L=3370/ W=1900/ H=3070	Rise & Fall Automatic / Manual	22 ton	700-1100	100ft	15kw	2 year "Best in Class"
OSSPL-HG04 (SS Clading)	L=3370/ W=1900/ H=3370	Rise & Fall Automatic	24 ton	700-1100	100ft	15 kw	2 year "Best in Class"



OSSPL-HE Human Cremation System

Electric Based Cremation System

The OSSPL-H-002 is our Super Duty Cremation system. It features a super large primary chamber and a uniquely designed multi-faceted secondary chamber. The OSSPL-HE has a chamber capacity of 150-250 kg. The average cremation time is approx. 40-50 minutes or less and can perform back to back cremations with no cool down between cremations. This is our most advanced, manual and automated model manufactured.

The coils heat up when electricity pass through the coils due to resistance. That heat is utilized to increase the temperature inside the furnace which is responsible for the disposal of dead body.

The pollutants are collected in wet scrubber and filter gases are leave to environment through a chimney.

Heating Element

Power Metallurgy wire, Kanthal, AL/NI chrome wire in spiral form designed to work at low watt density. Heating Element is fixed in closed Groove Refractory thus avoiding Direct contact with the emission for better life of the elements.

Quantity: 12 Nos.

Materials: Al/Nicrome wire.

Form: Coil Formation.

Distribution: Inserted within side within heat Chamber through coil Bricks.



Models & Specifications

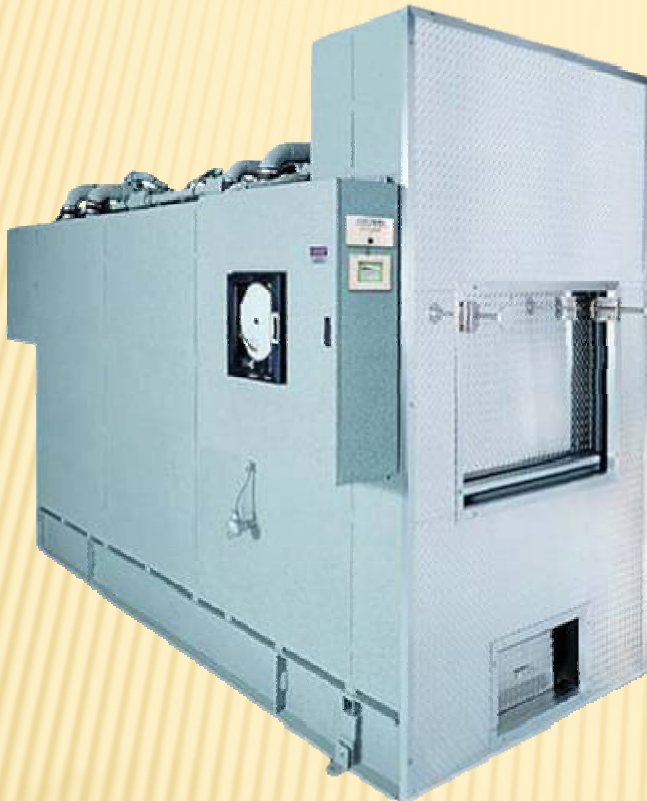
Model	Dimension (mm)	Door Type	Weight	Temp	Chimney	Panel	Warranty
OSSPL-HE01	L=3370/ W=1900/ H=1800	Hinge Type	15 ton	700-1100	20ft	50 kw	1 year "Best in Class"
OSSPL-HE02	L=3370/ W=1900/ H=2800	Rise & Fall Manually operated	21 ton	700-1100	100ft	70 kw	2 year "Best in Class"
OSSPL-HE03	L=3370/ W=1900/ H=3070	Rise & Fall Automatic / Manual	22 ton	700-1100	100ft	70 kw	2 year "Best in Class"
OSSPL-HE04 (SS Clading)	L=3370/ W=1900/ H=3370	Rise & Fall Automatic	24 ton	700-1100	100ft	70 kw	2 year "Best in Class"



Human Cremation System

OSSPL-HHD-01

Hybrid Based Cremation System



This is a eco-friendly way to cremate a dead body with the heat evolved by electrical coils or GAS. Which can fulfill the need of recent problem associated with the disposal of dead bodies.

The OSSPL-HHD has a chamber capacity of 150-250 kg. The average cremation time is approx. 40-50 minutes or less and can perform back to back cremations with no cool down between cremations.

It is designed in such a way so that maximum heat evolve from the electrical coils or gas burning is utilized for cremation of dead body (i.e. Maximum Combustion Efficiency) and air input is as per requirement for complete combustion & controlled so that less suspended particles in flue gas.

The coils heat up when electricity pass through the coils due to resistance. That heat is utilized to increase the temperature inside the furnace which is responsible for the disposal of dead body.

Along with If Combustible Gas like LPG or CNG is burned, it evolve heat which is utilizes for cremation The pollutants are collected in wet scrubber and filter gases are leave to environment through a chimney.



Models & Specifications

Model	Dimension (mm)	Door Type	Weight	Temp	Chimney	Panel	Warranty
OSSPL-HHD-01	L=3370/ W=1900/ H=3370	Rise & Fall Automatic / Manual	23 ton	700- 1100	100ft	70 Kw	2 year "Best in Class



Human Cremation System

OSSPL-HMF-01

Mobile Cremation System

This is a eco-friendly way to cremate a dead body with the heat evolved by diesel or GAS. Which can fulfill the need of recent problem associated with the disposal of dead bodies. The OSSPL-HMF has a chamber capacity of 150-250 kg. The average cremation time is approx. 40-50 minutes or less and can perform back to back cremations with no cool down between cremations.

It is designed in such a way so that maximum heat evolve from the Diesel or gas burning is utilized for cremation of the dead body (i.e. Maximum Combustion Efficiency) and air input is as per requirement for complete combustion & controlled so that less suspended particles in flue gas.

That heat is utilized to increase the temperature inside the furnace which is responsible for the disposal of dead body. Along with If Combustible Gas like LPG or CNG is burned, it evolve heat which is utilizes for cremation The pollutants are collected in wet scrubber and filter gases are leave to environment through a chimney.



Models & Specifications

Model	Dimension	Door Type	Weight	Temp.	Chimney	Panel	Warranty
OSSPL-HMF-01	L=3370/ W=1900/ H=3370	Hinge Type	14 ton	700-1100	10 ft	4 Kw	1 year "Best in Class"



Human Cremation System

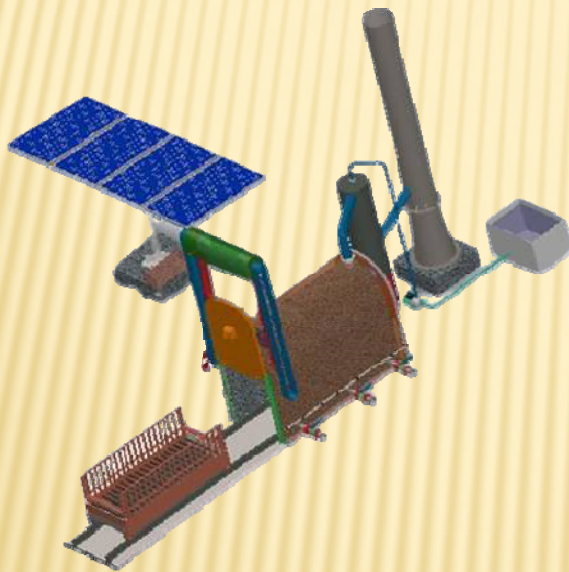
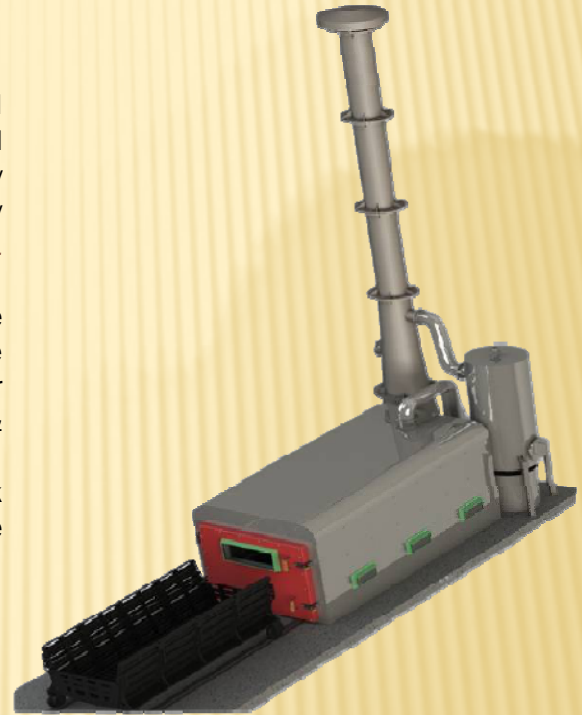
OSSPL-IW

Improved Wood Based Cremation System

This is a eco-friendly way to cremate a dead body with wood Consumption approximately 25% (110 Kg), which can fulfill the need of recent problem associated with the dead body cremation in INDIA. In this all the rituals followed by Hinduism, Sikhism, Jainism etc. can be fulfilled. *KAPAL KRIYA CAN ALSO BE PERFORM.*

It is designed in such a way so that maximum heat evolve from the burning of wood is utilized for cremation of the dead body (i.e. Maximum Combustion Efficiency) and air input is as per requirement for complete combustion & controlled so that less suspended particles in Flue gas.

The heat evolve from the burning of wood is reflected back and Concentrated in the combustion area so that inside temperature reaches high.



The conservation of heat (Energy) is main reason for less consumption of wood along with controlled air also play a role in saving of wood and less suspended particles. The pollutants are collected in wet scrubber and filter gases are leave to environment through a chimney

Models & Specifications

Model	Door Type	Weight	Temp.	Chimney	Panel	Warranty
OSSPL-IW01	Rise & Fall Manual	14 ton	700-1100	20ft	5 kw	2 year "Best in Class"
OSSPL-IW02	Rise & Fall Automatic	15 ton	700-1100	100ft	5 kw	2 year "Best in Class"



Human Cremation System

OSSPL-Pyre

Pyre Based Cremation System



This is a Eco-friendly way to Cremate a Dead Body with less wood Consumption. Which can fulfill the Need of Recent Problem associated with the Dead Body cremation in INDIA. In this all the rituals followed by Hinduism, Sikhism, Jainism etc. can be fulfilled.

suitable to meet 05-06 cremation in a single day which comprise of Pyre arrangement (made of heat corrosion and thermal shock resistance alloy steel with temperature resistance up to 900 degree centigrade, which can resist oxidation and high temperature deterioration of metal),



OSSPL Hood : stainless steel of grade SS-304 of size 2.20 meter long, 1.25 meter wide and 1.00 meter high in taper.

OSSPL Chimney : 7 meters chimney to leave flue gases made up of SS-304.

OSSPL Pyre : Cast Iron

OSSPL Ash Tray : SS-304, supported on MS angles and bars.

Models & Specifications

Model	Weight	Temp.	Chimney	Warranty
OSSPL-Pyre01	5 ton	500-900	20ft	2 year "Best in Class"
OSSPL-Pyre02	300-750 kg	500-900	---	2 year "Best in Class"



OSSPL-AG — Pet Cremation System Gas/Diesel Pet Cremation System

Based upon our many years of experience within the Pet Cremation industry, we understood the necessity to create a machine that encompassed the day-to-day operations of a Pet Cremation facility. The OSSPL-AG is a purpose built, top loading pet cremation incinerators, best suited for the disposal of individual carcasses.

It is designed in such a way so that maximum heat evolve from the burning of LPG/CNG is utilized for cremation of the pet body (i.e. **Maximum Combustion Efficiency**) and air input is as per requirement for complete combustion & controlled so that less suspended particles in fuel gas.



500-750kg Capacity

The heat evolve from the burning of LPG/CNG is reflected back and store in the combustion area so that inside temperature reaches high.

Concentrate flame and heat area is responsible for the disposal of pets body. The pollutants are collected in wet scrubber and filter gases are leave to environment through a chimney.

❑ Models & Specifications

Model	Dimension (mm)	Door Type	Weight	Temp.	Chimney	Panel	Warranty
OSSPL-AG01	L=4200, B=1850, H=2050	Top loading Automatic	25 ton	800-1200 degree	20ft	5 kw	1 year "Best in Class"
OSSPL-AG02	L=4200, B=1850, H=2050	Top loading Automatic	24.5 ton	800-1200 degree	100ft	15 kw	2 year "Best in Class"



Pet Cremation System

OSSPL-AE

Electrical Pet Cremation System

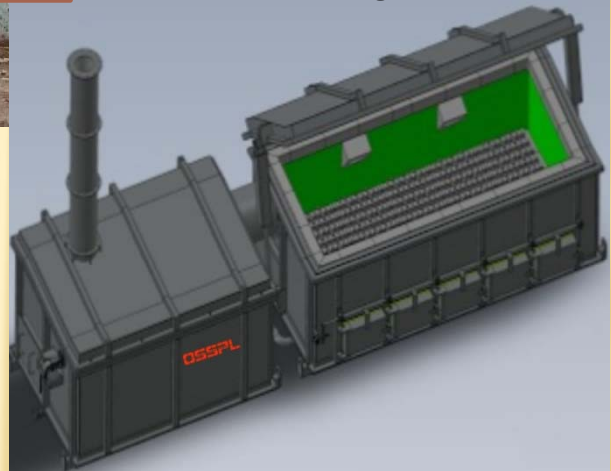


500-750kg Capacity

The coils heat up when electricity pass through the coils due to resistance. That heat is utilized to increase the temperature inside the furnace which is responsible for the disposal of PET's dead body. The pollutants are collected in wet scrubber and filter gases are leave to environment through a chimney.

Based upon our many years of experience within the Pet Cremation industry, we understood the necessity to create a machine that encompassed the day-to-day operations of a Pet Cremation facility. The OSSPL-AE is a purpose built, top loading pet cremation incinerators, best suited for the disposal of individual carcasses.

It is designed in such a way so that maximum heat evolve from Electric Coils is utilized for cremation of the pet body (i.e. Maximum Combustion Efficiency) and air input is as per requirement for complete combustion & controlled so that less suspended particles in fuel gas.



Models & Specifications

Model	Dimension (mm)	Door Type	Weight	Temp.	Chimney	Panel	Warranty
OSSPL-AE01	L=4200, B=1850, H=2050	Top loading Automatic	23 ton	800- 1200 degree	20ft	50 KW	1 year "Best in Class
OSSPL-AE02	L=4200, B=1850, H=2050	Top loading Automatic	25 ton	800- 1200 degree	100ft	70K W	2 year "Best in Class



Pet Cremation System

OSSPL-PET-HD-01

Hybrid Pet Cremation System

Based upon our many years of experience within the Pet Cremation industry, we understood the necessity to create a machine that encompassed the day-to-day operations of a Pet Cremation facility. The OSSPL-AE is a purpose built, top loading pet cremation incinerators, best suited for the disposal of individual carcasses.

The OSSPL-PET-HD-01 has a chamber capacity of 500-700 kg. The average cremation time is approx. 90 minutes or less and can perform back to back cremations with no cool down between cremations.



500-750kg
Capacity



It is designed in such a way so that maximum heat evolve from the electrical coils or gas burning is utilized for cremation of the dead pet body (i.e. Maximum Combustion Efficiency) and air input is as per requirement for complete combustion & controlled so that less suspended particles in flue gas.

The coils heat up when electricity pass through the coils due to resistance. That heat is utilized to increase the temperature inside the furnace which is responsible for the disposal of dead body.

Along with If Combustible Gas like LPG or CNG is burned, it evolve heat which is utilizes for cremation. The pollutants are collected in wet scrubber and filter gases are leave to environment through a chimney.

Models & Specifications

Model	Dimension	Door Type	Weight	Temp.	Chimney	Panel	Warranty
OSSPL-PET-HD-01	L=4200, B=1850, H=2050	Top loading Automatic	25 ton	800- 1200 degree	100ft	70 kw	2 year "Best in Class



Small Pet Cremation System



OSSPL-S-AG

Gas/Diesel Small Pet Cremation System

The heat evolve from the burning of LDO/HSD/CNG/PNG/Diesel is reflected back and store in the combustion area so that inside temperature reaches high. Concentrate flame and heat area is responsible for the disposal of dead body. The pollutants are collected in Venturi scrubber and cyclonic mist eliminator and filter gases are leave to environment through a chimney.

Furnace chamber is divided into two chamber

i) Primary Chamber ii) Secondary Chamber

75-100kg Capacity



Cremation should be carried out completely and quickly without creating smoke nuisance. Cremation shall take place automatically without intervention of human being. Cremation furnace shall be simple, fast and safe in operation. Having features to ensure full compliance to the environment protection obligation.

Models & Specifications

Model	Dimension (mm)	Door Type	Weight	Temp.	Chimney	Panel	Warranty
OSSPL-S-AG-01	L=3000, B=1800, H=1800	Top loading Automatic	25 ton	800-1100 degree	20ft	4-6 kw	1 year "Best in Class"
OSSPL-S-AG-02	L=3000, B=1800, H=1800	Top loading Automatic	24.5 ton	800-1100 degree	100ft	15 kw	2 year "Best in Class"



Small Pet Cremation System

OSSPL-S-AE

Electrical Small Pet Cremation System

The coils heat up when electricity pass through the coils due to resistance. That heat is utilized to increase the temperature inside the furnace which is responsible for the disposal of PET's dead body.

The pollutants are collected in wet scrubber and filter gases are leave to environment through a chimney.



75-100kg Capacity



Power Metallurgy wire, Kanthal, AL/NI chrome wire in spiral form designed to work at low watt density. Heating Element is fixed in closed Groove Refractory thus avoiding Direct contact with the emission for better life of the elements.

Quantity: 16 Nos.

Materials: Al/Nicrome wire.

Form: Coil Formation.

Distribution: Inserted within side within heat Chamber through coil Bricks.

Models & Specifications

Model	Dimension (mm)	Door Type	Weight	Temp.	Chimney	Panel	Warranty
OSSPL-S-AE-01	L=3000, B=1800, H=1800	Top loading Automatic	25 ton	800-1100 degree	20ft	50 kw	1 year "Best in Class"
OSSPL-S-AE-02	L=3000, B=1800, H=1800	Top loading Automatic	24.5 ton	800-1100 degree	100ft	70 kw	2 year "Best in Class"



POLLUTION CONTROL SYSTEM (PCS)

Chimney

1. Height of Chimney is 30 meter.
2. Base dia. of Chimney is 1200 mm.
3. Bottom dia. of Chimney is 300 mm.
4. 22mm Dia. Half Thread High Tension Nut/Bolts with one spring washer and two plain washers.
5. Foundation Bolts/Nuts 35mm Dia. X 1500mm Long
6. Steel Core Wire Rope 10mm Dia.
7. Type:- self supported type with suitable earthing, strip, aviation light, lightening arrestor, ladder with platform, plates
8. Material use M.S sheet



Wet Scrubber

There are three steps of wet scrubber as given below:

1. Condenses the smoke through high-pressure cold air so the heavy ash particles get settle down in the chamber and gases pass through second stage.
2. Washes the smoke through high pressure water sprinkled over it and goes to third stage.
3. Excess carbon particles mix with water and hot gases released through chimney.

Specification:

Material of construction : S.S. AISI – 304

Position of water spray : from top of system

Water circuit : closed.

Efficiency : 93-95%

Nozzle : specially designed Brass made nozzle.

Concentration of particles: 150 mg/Ng (nominal cu. meter.) in exhaust air.

Velocity of exhaust air : 1M/ sec.

Fume discharge : 3000 cu.m. per hour.

Rating of re-circulation : 3.0 H.P. pump





Furnace Equipments

Burners (OSSPL Make)

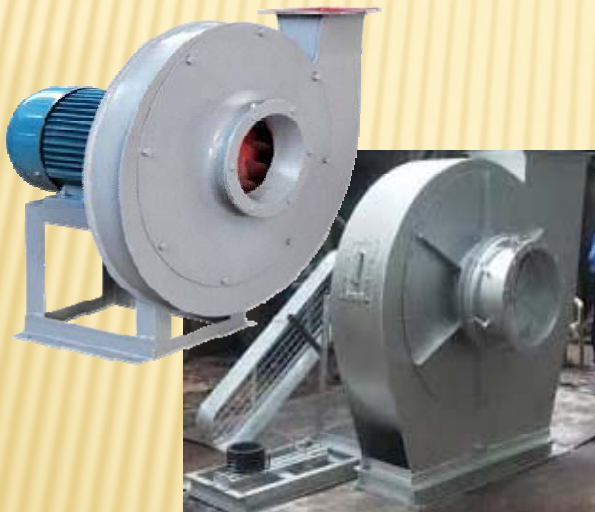
Specifications

Burner Type	Power Gas Burner
Burner Capacity	50 - 25 kw/hr 43000 - 215000 Kcal/hr
Gas Flow	4.0 - 19.0 KG./HR
Combustion Air Blower	200W, 2800 rpm, 50Hz
Electrical Connection	230V, 1Ph
Flame Monitoring	Ionization



Id Fan

An induced draught fan (ID fan) is provided to maintain a negative pressure in the furnace by sucking the products of combustion from it with a slight positive pressure at the discharge end vis-à-vis the bottom of the chimney/stack



Type : Centrifugal
Capacity : 2800 rpm
Pressure : 600 mm WG
Motor rating : 10.0 H.P.

Cremation Trolley

Trolley and stretcher is provide for easy loading of Dead body. Stretcher type, manually operated, moving on Rails with lowering & lifting mechanism.





OSSPL Controls & Equipment

Our Panel Division supplies a wide variety of custom control panel solutions to meet the demands of our customers and various other industries. We are built on providing high quality workmanship, on-time delivery and competitive pricing.

A Floor mounted 2 control panel sturdy M.S. Structure & Plate with Indicating Lamps, Contractor, relays/Timers with Safety & Power saving devices with power meter, HRC Fuses, Controller The control panel will be neatly wired & Ferruled as per standard. So that it can be service by local electricians.



All panels are full functioning and tested prior to shipment

We subject our products to rigid inspection procedures offering.

Whether your requirement is for the assembly and wiring of a control panel or designing a complete system, OSSPL can provide a cost effective, efficient solution that is both accurate and delivered on time.

Customer service is our number one priority!



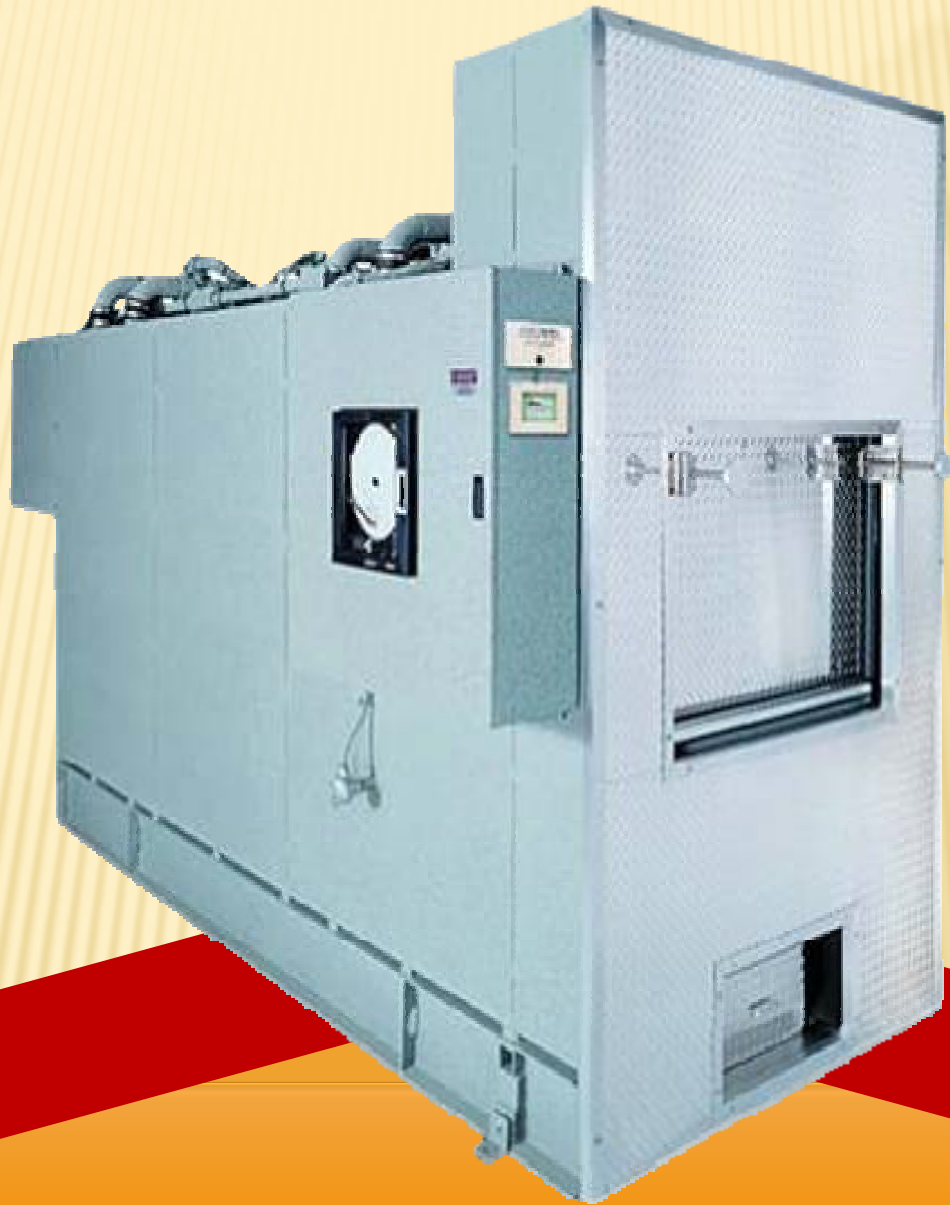








OM SAI SWARAHANTRA PVT. LTD



www.ossplgroup.in



+91- 7607602764

+91- 9315585499



swarahantra@gmail.com

salesossplgroup@gmail.com

Reg. Add- D2-453 A SHIV DURGA VIHAR, LAKKARPUR, SURAJKUND, FARIDABAD, HARYANA (121009) – INDIA
Off. Add- I-120 GURUKUL INDUSTRIAL AREA, SHIV DURGA VIHAR, FARIDABAD, HARYANA