

MECON LVT10 CONTROLLER



MEDEval,
Drive
programming
software.

BRUSHLESS DC MOTOR CONTROLLER

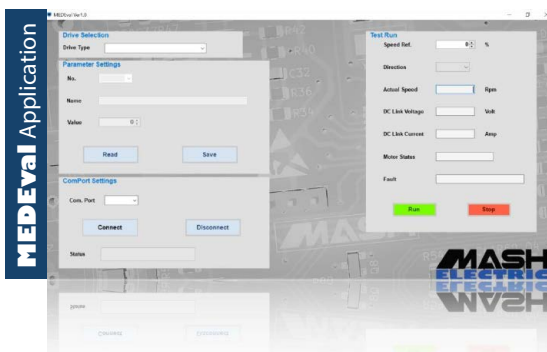
The MECON LVT10 series of controller is a three phase motor controller specially designed for electronic commutation of sensored brushless motors. It is equipped with advance motor control algorithms and in-house designed gate drivers for robust performance.

Simple speed control is achieved by hall sensors in open loop as well as closed loop control modes. Accurate fault detection makes the controller well protected in overlimit conditions.

High efficiency and cost effectiveness makes it possible to integrate it in OEM applications. LVT10 controllers can be used in general industrial applications as well as applications where high torque demand is required.

APPLICATIONS

- Conveyers
- Printing
- Packaging
- Textiles
- Flap barriers, Boom barriers
- Robotics



TECHNICAL SPECIFICATION

LVT10

Operating mode	Open loop, Closed loop
Feedback	HALL sensors (U, V, W)
Power	50W (LVT10A) 100W (LVT10B) 200W (LVT10C)
Voltage	18 - 28V
Current (cont.)	2A (LVT10A) 4.2A (LVT10B) 8.5A (LVT10C)
RPM range	20000 RPM
Speed input	0 - 5V / 1 - 10KHz
Hall voltage	5V (25mA max.)
Acceleration	0 - 20 s
Deceleration	0 - 20 s
Over voltage	30V
Under voltage	18V
Overload	150% (60 s)
Stall protection	6 s
Operating temp.	-5 - 40 C (ambient)
Max. temp.	80°C (heatsink)
Communication	RS485
Weight (L x W x H)	250grams approx. (121mm x 76mm x 30mm)

Additional digital keypad interface capability

