



Lexpure<sup>®</sup>

*Drink Pure,  
Be Sure*

**Lexpure<sup>®</sup>**  
**INDEX**

**03-06**

BOOSTER  
PUMP

**30-31**

HOUSING  
& ACCESSORIES

**07-11**

RO  
MEMBRANE

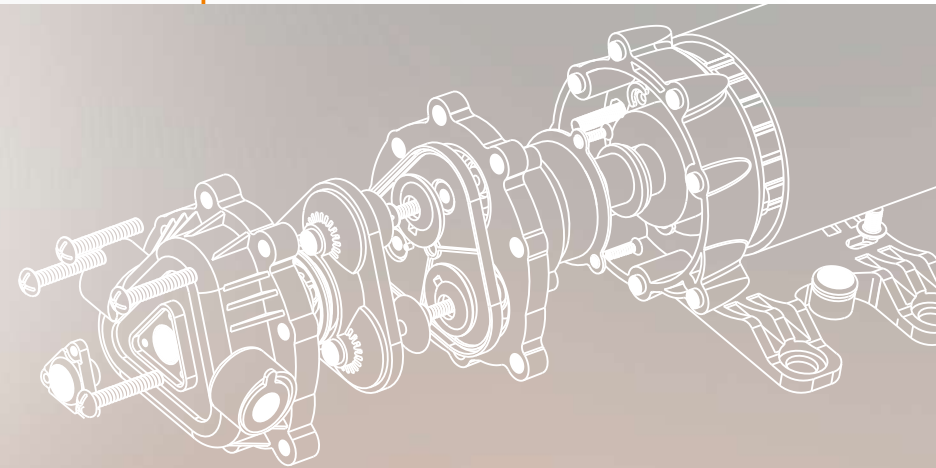
**24-29**

RO  
SYSTEMS

**12-23**

ALL FILTERS

## BOOSTER PUMP



A Product From the house of  
**India's**   
 Largest Pump Manufacturer

Certified by :



THE  
**BEST WATER PUMP**  
 AWARDED BY  
**WATER DIGEST**  
 IN ASSOCIATION WITH  
**UNESCO & ASSOCHAM**



2015 - 2016



2016 - 2017

**3/8 Thread  
Fitting**

**Bypass  
Available**

- ➡ Can run dry with out damage
- ➡ Solid Diaphragm & bypass Design
- ➡ Quiet Operation
- ➡ Flow rates from 75 to 150 GPD



MODEL	VOLTAGE (V)	AMP(A)	OUTPUT FLOW (LPM)	WORKING PRESSURE (PSI)	MAXIMUM PRESSURE (PSI)	SUCTION HEIGHT (M)
SILVER - 75	24	0.80±0.05	1.3	60-80	135 ± 10	1.0
SILVER - 100	24	1±0.1	1.8	70-90	140 ± 10	1.5
SILVER -150	24	1.5±0.1	2.5	70-90	145 ± 10	2.0



3/8 Thread  
Fitting

Bypass  
Available

MODEL	VOLTAGE (V)	AMP.(A)	OUTPUT FLOW (LPM)	WORKING PRESSURE (PSI)	MAXIMUM PRESSURE (PSI)	SUCTION HEIGHT (M)
ECO - 75	24	0.80±0.05	1.3	60-80	135 ± 10	1.0
ECO - 100	24	1±0.1	1.8	70-90	140 ± 10	1.5

- ➡ Solid Diaphragm & bypass Design
- ➡ Quiet Operation
- ➡ Flow rates from 75 to 100 GPD





# BOOSTER PUMP DURABLE



3/8 Thread  
Fitting

Bypass  
Available

- ➡ Can run dry with out damage
- ➡ Solid Diaphragm
- ➡ Quiet Operation
- ➡ Flow rates from 75 to 300 GPD

MODEL	VOLTAGE (V)	AMP.(A)	OUTPUT FLOW (LPM)	WORKING PRESSURE (PSI)	MAXIMUM PRESSURE (PSI)	SUCTION HEIGHT (M)
DURABLE -75	24	0.85±0.05	1.7	65-85	135 ± 10	1.5
DURABLE -100	24	1±0.1	2.0	75-95	150 ± 10	2.0
DURABLE -150	24	1.5±0.1	2.8	75-105	150 ± 10	3.0
DURABLE -300	24	2±0.2	4.0	90-120	150 ± 10	4.0



## INLINE FILTERS

A Product From the house of  
**India's**   
Largest Filter Manufacturer

Quick &  
Thread type





# FUSION INLINE KIT

3 INLINE + 1 SPUN FILTER  
(160 GMS)

Push Fitting

Mould Thickness  
3.5mm



Max. Working  
Press.  
150 PSI /  
10.3 BAR

Max. Bursting  
Press.  
300 PSI /  
20.6 BAR





## BLOCK CARBON

**Iodine Value - 1100**

Carbon Quality - **Coconut Shell**

Removal - Chlorine, Organic Impurities, Unpleasant taste

Life - 7500 ltr  
( depending on water source )

## SPUN CARTRIDGE

**Polypropylene Made**

**Pore Size - 5 Micron**

Removal - micron impurities,  
unwanted debris

## PRECARBON BLOCK FILTER

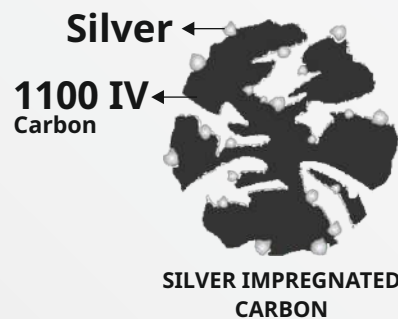
## SEDIMENT FILTER

## POST CARBON FILTER

SILVER  
IMPREGNATED  
CARBON

MINERAL  
ADDITIVES

1100IV  
COCONUT SHELL  
CARBON



## USES

Silver Removes Microbes,  
Pesticides Also Neutralize  
Chlorine.

Mineral Balls Adds Calcium  
Magnesium & Other Minerals  
Also Energizes Water.





# INLINE SILVER



**Max. Working  
Press.  
125 PSI /  
8.62 BAR**

**Max. Bursting  
Press.  
225 PSI /  
15.51 BAR**

- Pre Carbon Filter - 600iv Activated Coconut Carbon
- Sediment Filter - 5 Micron Cloth Filter
- Post Carbon Filter - 600iv Coconut Carbon



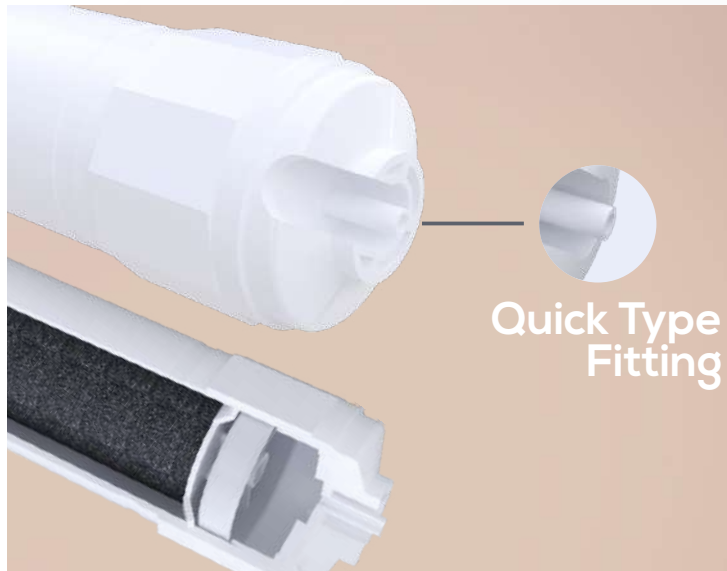


Quick Type Fitting

- Pre Carbon Filter - 600iv Activated Carbon
- Sediment Filter - 5 Micron Cloth Filter
- Post Carbon Filter - 600iv Carbon

**Max. Working  
Press.  
125 PSI /  
8.62 BAR**

**Max. Bursting  
Press.  
225 PSI /  
15.51 BAR**



Max. Working  
Press.  
125 PSI /  
8.62 BAR

Max. Bursting  
Press.  
225 PSI /  
15.51 BAR

- Pre Carbon Filter - 900iv Activated Carbon - Block
- Sediment Filter - 5 Micron Spun Filter
- Post Carbon Filter - 4" spun + 900iv Coconut Carbon





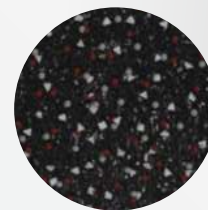
ALKALINE **FILTER**



B12 **FILTER**

8" & 10"  
Available

Quick or  
Thread  
Fitting



pH Alkaline ↑  
Re-mineralized ↑  
Hydrogen ↑  
Orp ↓

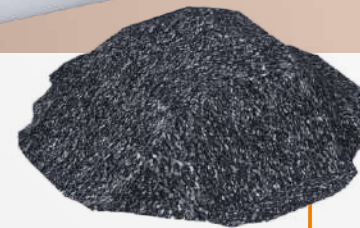




- ➔ Mineral Additives
- ➔ Remove Bacteria.
- ➔ PH Enhancer.
- ➔ Improves Taste of Water.



100 %  
**COCONUT**  
CARBON



8"  
Mini Post

Quick  
Fitting

- Get rids of unpleasant smell
- Enhance Water Flavour
- Granular Post Filter - 900 iv Coconut Carbon



**ANTISCALANT  
CARTRIDGE**

**MINERAL  
CARTRIDGE**

**UF  
MEMBARNE**

**ANTIOXIDANT  
ALKALINE WATER**



# Lexpure®



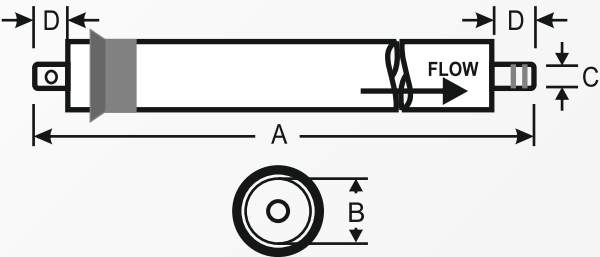
## RO MEMBRANE

A Product From the house of  
**India's**   
Largest Membrane Manufacturer



# REVERSE OSMOSIS MEMBRANE

LX TFC



MODEL	A MM	B MM	C MM	D MM
CZM-1812-75	298	44	17	22
CZM-2012-100	298	47	17	22
CZM-3012-300	298	72	17	22

## Properties and Testing Conditions

MODEL	Average Permeate (GPD)	Stable Rejection (%)	Min. Rejection (%)	Max. TDS
LXM-1812-75	75 (12 Ltr/hr)	96	95	1500
LXM-2012-100	100 (17 Ltr/hr)	96	95	1500
LXM-3012-300	300 (47 Ltr/hr)	96	95	1500

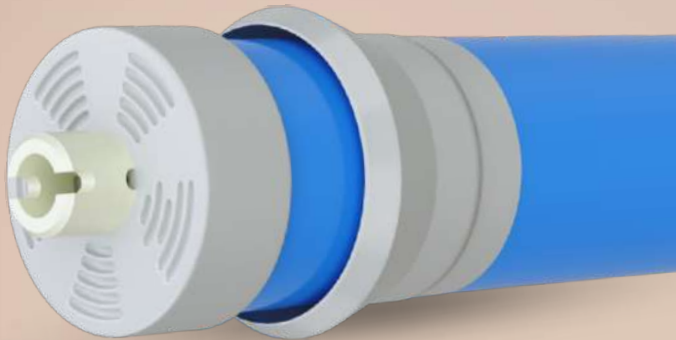
Notes: Permeate of single element may vary within [-20%] ~ [+20%]

## Testing Conditions :

Testing Pressure	100 psi (0.69MPa)	pH of Testing Solution	6.5~8.5
Temperature of Testing Solution	25° C	Recovery of Single Element	15 %
Concentration of Testing Solution (Nacl)	500ppm		



S SERIES



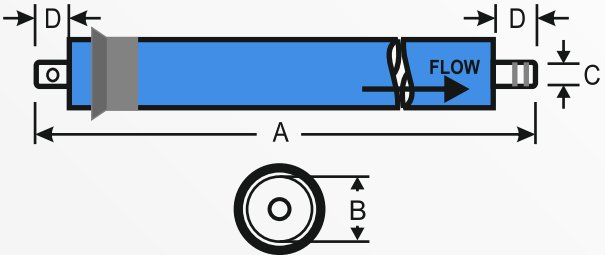
Properties and Testing Conditions

MODEL	Average Permeate (GPD)	Stable Rejection (%)	Min. Rejection (%)	Max. TDS
LXM-1812-75	75 (12 Ltr/hr)	96.5	95	2000
LXM-1812-80	80 (13 Ltr/hr)	96.5	95	2000
LXM-2012-100	100 (17 Ltr/hr)	96.5	95	2000
LXM-2012-150	150 (24 Ltr/hr)	96.5	95	2000

Notes: Permeate of single element may vary within [-20%] ~ [+20%]

Testing Conditions :

Testing Pressure	100 psi (0.69MPa)	pH of Testing Solution	6.5~8.5
Temperature of Testing Solution	25° C	Recovery of Single Element	15 %
Concentration of Testing Solution (NaCl)	500ppm		

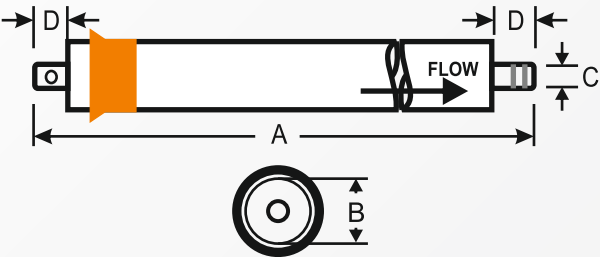


MODEL	A MM	B MM	C MM	D MM
CZM-1812-75	298	44	17	22
CZM-1812-80	298	46	17	22
CZM-2012-100	298	47	17	22
CZM-2012-150	298	48	17	22



# REVERSE OSMOSIS MEMBRANE

SILVER +



MODEL	A MM	B MM	C MM	D MM
LXM-1812-75	298	44	17	22
LXM-2012-100	298	47	17	22
LXM-3012-300	298	72	17	22

## Properties and Testing Conditions

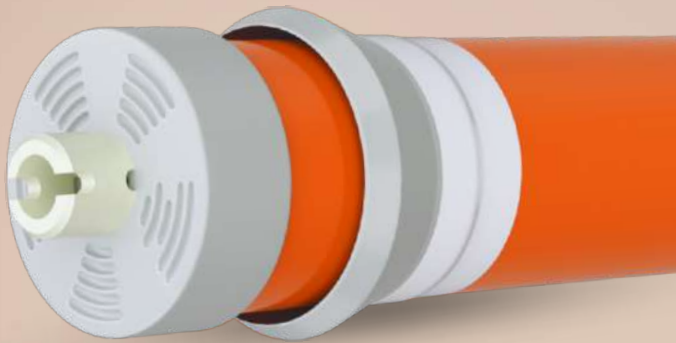
MODEL	Average Permeate (GPD)	Stable Rejection (%)	Min. Rejection (%)	Max. TDS
LXM-1812-75	75-90 (12-14 Ltr/hr)	98.5	97	4000
LXM-1812-80	80-100 ( 13-16 Ltr/hr)	98.5	97	4000
LXM-2012-100	100-125 (17-21 Ltr/hr)	98.5	97	4000

Notes: Permeate of single element may vary within [-20%] ~ [+20%]

## Testing Conditions :

Testing Pressure	100 psi (0.69MPa)	pH of Testing Solution	6.5~8.5
Temperature of Testing Solution	25° C	Recovery of Single Element	15 %
Concentration of Testing Solution (NaCl)	500ppm		

DURABLE



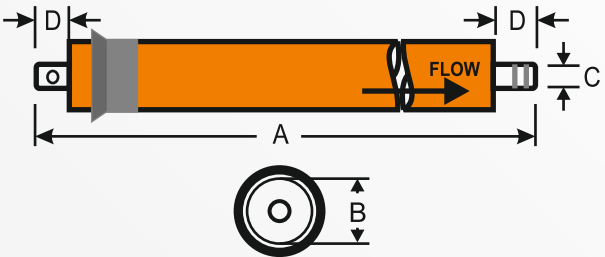
Properties and Testing Conditions

MODEL	Average Permeate (GPD)	Stable Rejection (%)	Min. Rejection (%)	Max. TDS	Effective Sheet Area
LXM-1812-75	75-90 (12-14 Ltr/hr)	98.5	97	4000	0.68 m <sup>2</sup>
LXM-1812-80	80-100 ( 13-16 Ltr/hr)	98.5	97	4000	0.84 m <sup>2</sup>
LXM-2012-100	100-125 (17-21 Ltr/hr)	98.5	97	4000	0.98 m <sup>2</sup>

Notes: Permeate of single element may vary within [-20%] ~ [+20%]

Testing Conditions :

Testing Pressure	100 psi (0.69MPa)	pH of Testing Solution	6.5~8.5
Temperature of Testing Solution	25° C	Recovery of Single Element	15 %
Concentration of Testing Solution (NaCl)	500ppm		



MODEL	A MM	B MM	C MM	D MM
CZM-1812-75	298	46	17	22
CZM-1812-80	298	47	17	22
CZM-2012-100	298	48	17	22

# Lexpure®



## RO SYSTEMS





# REVERSE OSMOSIS SYSTEM

**CLASSIC PRO**

**ALKALINE RO**



**6**  
STAGE

**10** Ltr.  
STORAGE



**CUSTOMIZATION AVAILABLE**





# REVERSE OSMOSIS SYSTEM

## TAPURO PLUS ALKALINE RO

**ph**  
Balancer  
TECHNOLOGY



5  
STAGE

08 Ltr.  
STORAGE

CUSTOMIZATION AVAILABLE

Lexpure®

REVERSE OSMOSIS  
SYSTEM

5  
STAGE

08 Ltr.  
STORAGE



TAPURO  
PRO

ALKALINE RO

CUSTOMIZATION AVAILABLE

ph  
Balancer  
TECHNOLOGY



# REVERSE OSMOSIS SYSTEM

COMMERCIAL  
RO - 5 STAGE

25-40  
LPH

**ENHANCES  
THE TASTE OF  
WATER**



50-80  
LPH

**CUSTOMIZATION AVAILABLE**

## 7 STAGE RO SYSTEM

Stage 1 : Sediment Filter

Stage 2 : Gac

Stage 3 : Carbon Block

Stage 4 : Ro Membrane

Stage 5 : Post Carbon

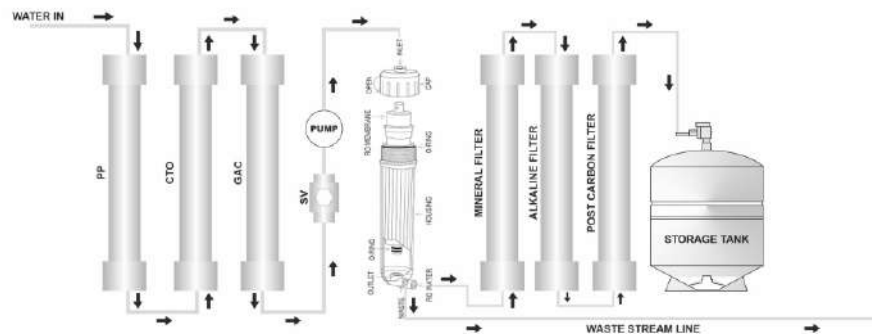
Stage 6 : Anti Oxidant Alkaline

Stage 7 : Mineral Cartridge



50-100  
GPD  
RO SYSTEM

MADE  
IN  
INDIA



WATER FLOW DIAGRAM

OPTIMIZE THE WATER QUALITY SO THAT THE DRINKING WATER IS SWEETER  
100% FACTORY TESTED AND READY FOR INSTALLATION

**CUSTOMIZATION AVAILABLE**

## PRODUCT SPECIFICATIONS

Micron Rating	1, 5, 10, 20 $\mu$
Length	10", 20", 30", 40"
Diameter	2 Ø to 4.5 Ø
Max operating temperature	80° C
Max Differential Pressure	3-4 bar (50 psi) @ 21°C

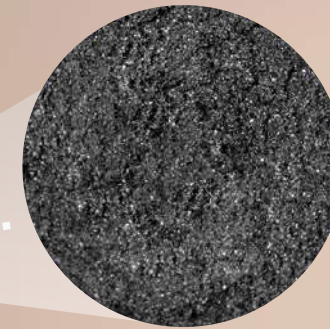


A Product From the house of  
**India's**   
 Largest Filter Manufacturer

## FEATURES & BENEFITS :

- High flow rates and low pressure drops
- Wide chemical compatibility
- Particles removed through the entire depth of filter cartridge.
- Graded density structure for maximum dirt holding capacity
- Supported core for overall strength
- Thermal bonding process stops media migration
- Contains no resin binders, solvent, wetting or antistatic agents





An efficient high capacity GAC & CTO filters improves the purity and taste of your water and gives you the best value from your filters

- 💧 Chlorine,
- 💧 Pesticides
- 💧 Cloudiness
- 💧 Unnatural Tastes
- 💧 Odors and
- 💧 Organic Chemicals

## FILTER HOUSINGS



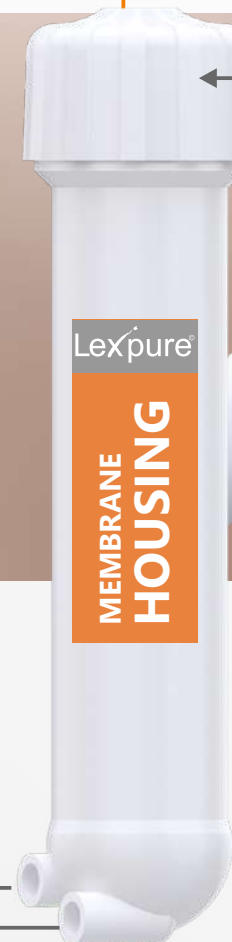
**DIAMOND**



**CRYSTAL**

### FILTER HOUSINGS

100% Virgin Poly-Propylene  
Gross Weight-600 Gms  
Can Hold Pressure Up to 300 PSI  
Double o'ring



Double O ring

1/4 Thread Fitting

## MEMBRANE HOUSINGS

### MEMBRANE HOUSINGS

100% Virgin Poly-Propylene  
Gross Weight-250 Gms  
Can Hold Pressure Up to 300 PSI  
Double o'ring

1/8 Thread Fitting



UV BARREL



RO TUBING



## **LEXCRU WATER TECH PVT. LTD.**

D- 601/602, Six Floor, Saral Icon, Near. Hotel Flora,

Opp. Reliance Petrol Pump, S. P. Ring Road, Vastral - 302418, Ahmedabad, Gujarat, INDIA.

+91 9624007888 | email : [sales@lexcru.com](mailto:sales@lexcru.com) | web : [www.lexcru.com](http://www.lexcru.com)