

**ND YAG : PULSED YAG
LASER SPOT WELDING MACHINE**



FEATURES

- Highly efficient welding than traditional TIG & MIG welding.
 - Localized heating effect & very less distortion.
 - It can achieve clean & smooth surface welding.
 - It can weld non porous metals.
-
- These machines are suitable for high production & as well as R & D used.
 - These machines are pollution free with low noise.
 - Laser welding head can move in all directions manually in order to weld parts of different shapes & different sizes.
 - Parameter setting is very user friendly, upto 50 set of parameter can be store for different application.
 - Red beam pointer for fast positioning.

APPLICATION

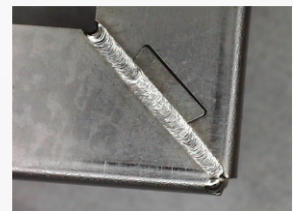
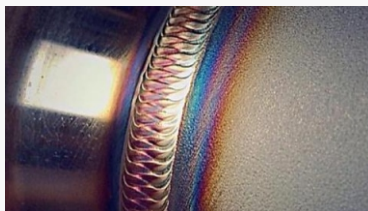
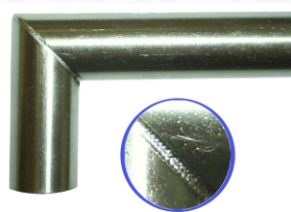
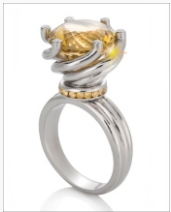
Non ferrous metal welding such like Gold, Silver, Aluminum, Copper, Brass etc. & Ferrous metal welding. Specially used for Die welding, precision engineering, Medical Engineering, Tool & Molding Construction.



TECHNICAL SPECIFICATION

MODEL NO.	DML-W200	DML-W300	DML-W400	DML-W500	DML-W600
Machine Power Consumption	6 KW	9 KW	12 KW	15 KW	18 KW
Laser Power	200 watt	300 watt	400 watt	500 watt	600 watt
Laser Source	Pulsed ND: YAG Laser				
Laser Wave Length	1064 nm				
Supply Voltage	230VAC 50Hz	415VAC 50Hz 60A			
Beam Diameter	0.1 ~ 3.0mm				
Pulse Frequency	1 ~ 100Hz				
Pulse Width	0.1 ~ 20ms				
Focal Length	100 mm/150 mm				
Spot Lighting Cavity	Ceramic				
Cooling System	Water Cooled				
Observing System	Red Beam Pointer				
Laser Point	0.3 ~ 2 mm				

SAMPLES



📍 Sr.30, H. No. 1+2, Opp Silver Star Hall, Yewalewadi Road, Khadi Machine Chowk,
Kondhwa Bk. Dist : Pune - 411 048, State : Maharashtra, India

www.dmarklaser.com,

info@dmarklaser.com / sales@dmarklaser.com

