



**WELCOME TO
KULDEVI INDUSTRIES**

About Our Company

Welcome to Kuldevi Industries, a trusted name in the field of Rotomoulding (Rotational Moulding) Machinery and Mould Manufacturing. Based in Ahmedabad, Gujarat – a UNESCO World Heritage City – we take pride in delivering high-quality engineering solutions backed by experience, innovation, and customer commitment.

With over 15 years of industry expertise, we specialize in the manufacturing and export of Rotomoulding machines, along with a wide range of sheet metal fabricated water storage tank moulds and customized article moulds made from SS 304 and MS materials.

Kuldevi Industries is a technology-driven and customer-focused company, dedicated to the design, development, and continuous improvement of rotational moulding machinery and moulds. Our strength lies in our team of experienced engineers and skilled technicians who work in a productive and stress-free environment to ensure superior product quality.

We are committed to innovation and constantly adopt advanced technologies to meet evolving market demands. Our services include:

- Design & Development of Rotomoulding Machines & Moulds
- Manufacturing of High-Quality Machinery & Moulds
- Installation & Commissioning Support
- Customer Training & Technical Guidance

Through consistent quality, innovation, and professional service, we have built a strong presence in both domestic and international markets, exporting to regions such as Asia, Africa, the Middle East, South Pacific Islands, and North & South America.

Our machines and moulds are widely recognized for:

- Robust Design
- High Productivity
- Fuel Efficiency
- Environment-Friendly Operation
- Superior Finish & Durability

At Kuldevi Industries, we believe in building long-term relationships by delivering reliable solutions and unmatched service excellence.

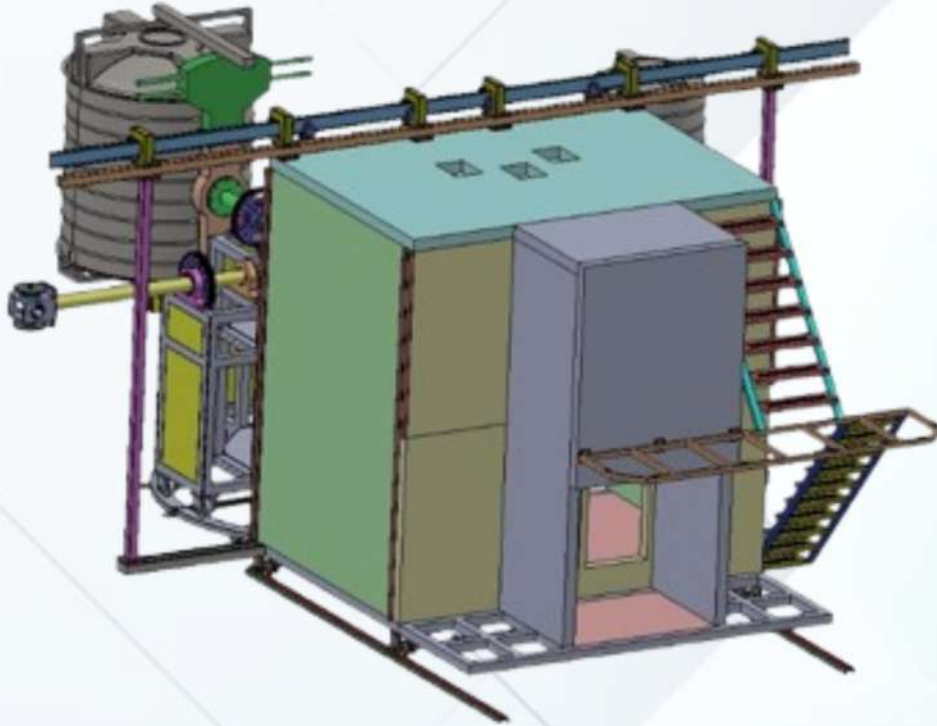
Our Mission

At Kuldevi Industries, our mission is to play a key role in the rotomoulding industry by delivering advanced and latest technology machinery that drives innovation and enhances overall production efficiency.

Our Vision

Our vision is to become a globally recognized leader in the rotomoulding industry by setting new standards in technology, quality, and innovation.

4 Arm BI Axial Machine



Advanced Technology Machine designed for high performance and reliability

High Production Output with optimized and low fuel consumption

90 mm Oven Wall Insulation using high-quality ceramic wool for maximum heat retention

Heavy-Duty Oven Construction made from MS sheet for enhanced strength and longer service life

Optional Hydraulic Lift System for easy material loading on top of the oven, enabling efficient multi-layer charging and faster processing

Specially Designed Oven Structure to minimize heat loss and reduce cycle time

High CFM Blower System ensures uniform thickness and consistent product quality

Multiple Article Capacity – accommodates multiple moulds on each straight arm for increased productivity

Pneumatic Cylinder Door Locking System ensures tight sealing to prevent heat loss

User-Friendly Electrical Control Panel with optional PLC automation system

Automatic Turret Locking System during operation for enhanced safety

Heavy-Duty Arms capable of handling weight in tons for large-scale production

Auto Mould Positioning System for accurate identification and operation

Imported Double-Stage Energy-Efficient Burner ensures faster heating with reduced fuel consumption

Close Oven Rock n Roll Machine



Octagonal Oven Design ensures better heat distribution and enhanced performance

Optimized Oven Structure results in significantly lower gas consumption

Double Door Oven System enhances safety and prevents accidents

Auto Ignition Burner System specially developed for safety and time-saving operation

Hydraulic System Integration for oven rocking and smooth door opening/closing

5 No. Reduction Gearbox positioned at the center backside for efficient mould rotation

125 Liter Oil Tank provided for reliable hydraulic power pack operation

Low Gas Consumption – only approx. **3 kg per cycle**

High Production Capacity – up to **36,000 liters in 10 working hours** with low fuel usage

Maintenance-Free Machine designed for long-term, hassle-free operation

Dual Door Windows (3 on each side) for easy material feeding directly from outside

User-Friendly & Easy Operation suitable for all levels of operators

Optional PLC Automation System for fully automatic control

Heavy Screw Mechanism provided at the front center for stability and strength

Cost-Effective Solution – ideal medium production machine with low investment

Multi-Article Production Capability for higher efficiency

Multi-Layer Tank Manufacturing made simple and efficient

Wide Model Range Available from 2000 Liters to 20000 Liters

Open Flame Rock n roll Machine



Low Production & Budget-Friendly Machine – ideal for startups and small-scale manufacturers

Medium Cost with Lowest Maintenance ensuring long-term cost efficiency

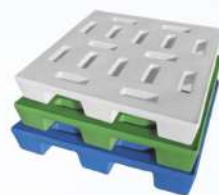
Open Fire Heating System with **mechanical rocking system** for simple and reliable operation

Suitable for Manufacturing water tanks as well as **large hollow products**

Specially Designed for Big Products such as:

- Underground Tanks
- Septic Tanks
- Cooler Bodies
- Horizontal Tanks
- Road Barriers
- Slides & Mobile Toilets

Wide Model Range Available from **5000 Liters to 30000 Liters**



Single Arm Single Station Bi-Axial Rotational Moulding Machine

EN 1000x2 is a Single Arm Single Station Bi-Axial Rotational Moulding Machine, designed for efficient and economical production. It is ideal for manufacturing a complete range of water tanks from 300 Ltr to 1000 Ltr capacity, delivering consistent quality with low operational cost.

Features :-

Heavy-Duty Straight Arm

Ensures high durability and reliable performance.

High Production Capacity

Produces up to **36 tanks of 1000 Ltr** or **72 tanks of 500 Ltr** within 24 hours.

Multi-Layer Capability

Suitable for manufacturing **multi-layer and foam tanks** with superior quality.

Versatile Application

Can be used for **all types of rotational moulding products**, not limited to water tanks.

Compact Design

Requires minimal space due to its **small footprint**.

Low Manpower Requirement

Operated efficiently with just **two semi-skilled workers**.

Energy Efficient

Designed for **low electricity consumption** and fuel efficiency.

Easy Installation

Can be installed on **plain and level ground** without complex setup.

Optional PLC Control

Advanced automation option available for better control and precision.

Mold Vertical Stop System

Ensures improved safety and operational accuracy.

1 Year Warranty

Covers all **mechanical components** for peace of mind.



SPECIFICATION	
Machine	
Machine Size	Length: 6.0 mtr
	Width: 3.5 mtr
	Height: 4.0 mtr
Minimum Shed Dimensions	Height: 5 mtr
	Area: 1000 Sq. Ft.
Cycle time	Double layer: 70 mins
	Triple Layer: 80 mins
Production per Cycle	1000 Ltr x 2 or
	750 Ltr x 2 or
	500 Ltr x 4 or
	300 Ltr x 4
Production per Day	36,000 Ltr (24 hrs.)*
Fuel Consumption:	Diesel: 5.5 Ltr/cycle*
	Gas: 4.2 kg/cycle*
Max. Temperature	250 °c
Total Connected Load	6.5 HP, 3 Phase, 50 Hz

TECHNICAL SPECIFICATIONS	
Straight-Arm	
Spindle	1
Maximum weight on arm	500 Kg
Spider Diameter	1250 mm
Major Axis Speed Range	0-6 RPM
Minor Axis Speed Range	0-8 RPM
Furnace	
Maximum Usage	1,89,167 Kcal/hr
Usage Normal	49,420 Kcal/cycle
Maximum Temperature	250 °c
Circulating blower CFM	7000 CFM
Electrical	
Supply Voltage	440V, 50 Hz, 3 Phase & Neutral
Circulating blower HP	3 HP
Major Axis Drive AC Motor HP	2 HP
Minor Axis Drive AC Motor HP	1 HP
Burner HP	0.5 HP



Product Description

Single Station Bi-Axial Rotational Moulding Machine.

One straight-arm.

Capacity two tanks of 1000 litres or four tanks of 500 litres maximum.

Typical cycle time 70 min (25 min heating, 25 min cooling, 20 min loading & unloading).

Fully automatic Italian burner, diesel or LPG or natural gas.

Fuel consumption cycle 5 litre diesel or 4.2 kg of LPG.

Electric load 6.5 H.P.

Process temperature 210oC.

Production in 24 hours 36 tanks of 1000 litres.

(L) 6 mtr x (W) 3.5 mtr x (H) 4 mtr.

VERTICAL WATER TANK MOULD



HORIZONTAL WATER TANK MOULD



DUSTBIN MOULD



FLOWER POT MOULD



ICE BOX MOULD



ROAD BARRIER MOULD





KULDEVI
INDUSTRIES



1 Icon Industrial Park Nr Abhisri Estate ,odhav Ring Road
Singarva, Vepari Mahamandal, Ahmedabad-382415.
Gujarat, India.



+91 944096 24370, +91 99984 47726.



sales.kuldeviindustries@gmail.com



www.kuldeviindustriess.com