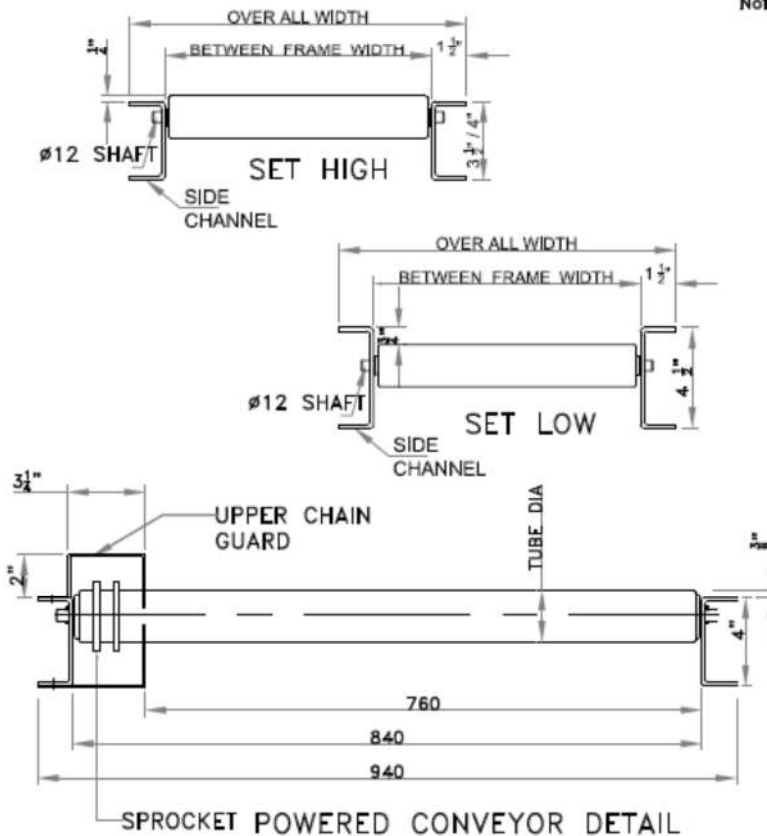


Note: All standard widths offered in 1 ft.



Over all Width	Between frame width	Roller Center	Model no.
22"	19"	2 1/4"	9GA-13-21/4
		3"	9GA-13-3
		4"	9GA-13-4
		4 1/2"	9GA-13-4 1/2
		6"	9GA-13-6
		9"	9GA-13-9
27"	24"	2 1/4"	9GA-13-21/4
		3"	9GA-13-3
		4"	9GA-13-4
		4 1/2"	9GA-13-4 1/2
		6"	9GA-13-6
		9"	9GA-13-9
29"	26"	2 1/4"	9GA-13-21/4
		3"	9GA-13-3
		4"	9GA-13-4
		4 1/2"	9GA-13-4 1/2
		6"	9GA-13-6
		9"	9GA-13-9
33"	30"	2 1/4"	9GA-13-21/4
		3"	9GA-13-3
		4"	9GA-13-4
		4 1/2"	9GA-13-4 1/2
		6"	9GA-13-6
		9"	9GA-13-9
42"	39"	2 1/4"	9GA-13-21/4
		3"	9GA-13-3
		4"	9GA-13-4
		4 1/2"	9GA-13-4 1/2
		5"	9GA-13-5
		9"	9GA-13-9

Standard Specifications.

Width - Between frame width = 840, conveying surface = 760

Frame :- 3 1/2" or 4 1/2" deep x 1 1/2" flange x 3 mm thick Powder coated 'C' shaped formed steel channel with welded / bolted cross members.

Section connections:- Standard bolt & hole fitting couplings provided (optional) on ends for assembly of sections at site / work place

Lengths:- Conveyor supplied in standard length of 6'7" and widths as above.

Rollers:- 19" dia x 9GA un-plated or Zinc plated steel tubing. Bearings are sealed with grease packed.

Axles:- 12mm dia round shafts support the rollers inside channels. Shaft is spring loaded.

Colour:- Apple Green - Texture shade. For other shade, please provide sample.

PLOT NO. A 380, ROAD NO. 28, CROSS ROAD R/2, WAGLE INDUSTRIAL ESTATE, THANE (W), MAHARASHTRA 400604 INDIA.

TEL: +91-22-25820202, FAX: +91-22-25402954

WEB: www.advanceconveyor.com, www.advanceequipments.com

Please visit www.advanceconveyor.in