

HITACHI
Inspire the Next

Ink Jet Printer
UX Series

P i m e n t d i n k

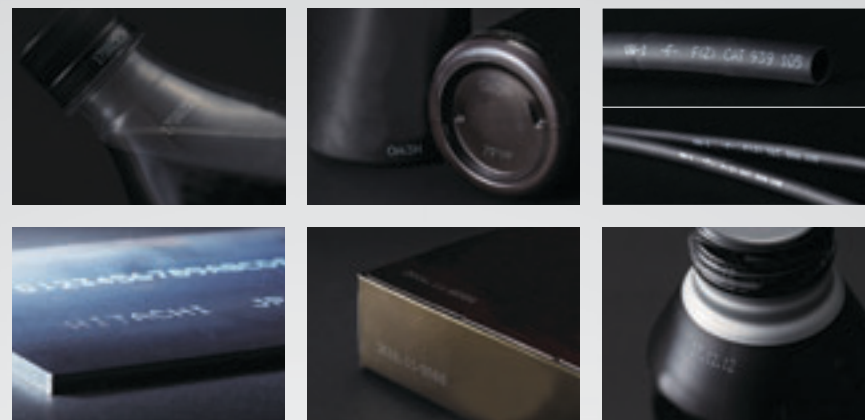
THE WORLD WIDE





Realized crisp printing with high contrast

The UX Series for Pigmented ink has debuted with further improved visibility of printing for a variety of printing needs. It realizes a high contrast even on a dark-colored material surface.



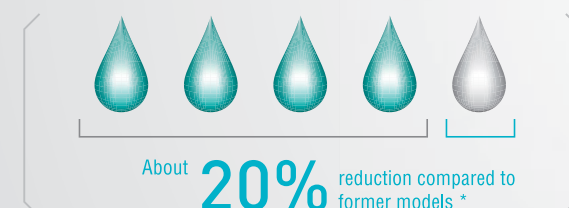
Hitachi original "Makeup fluid consumption reduction system" has Significantly-reduced running cost.

The ink recovery control and device temperature control provided by the new technology of "Makeup fluid consumption reduction system" suppress the amount of makeup vaporized and achieve industry-leading levels of makeup consumption.

Reduction of makeup fluid consumption

* With JP-W89 ink at 20°C.

UX-P



"Pigmented-ink stirring system" executes the optimal stirring control and improves the ink dispersion stability

The electric stirrer prevents the agglomeration and the settling which are specific to the pigmented ink so that it prevents the nozzle and the filter clogging. In addition, the Pigment model of UX Series is equipped with "Ink circulation control" which allows the ink to circulate even in a standby mode to prevent the ink fixing and realizes smooth operation on the production lines.

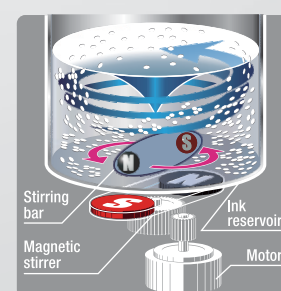
Smooth supply for ink and makeup fluid

Ink and makeup fluid can be supplied at any time with no interruption.

Electric stirrer



The image of stirring pigmented ink by electric stirrer



Pigments which are going to settle at the bottom of ink reservoir will be stirred from top to bottom by the stirrer.

Pigmented-ink Supporting High-performance Model

Realized a high contrast on dark-colored materials.

Maintainability and environmental performance have dramatically improved.

A human-friendly and environment-friendly IJ printer has debuted.

Specification

Item		Model
		UX-P160 W / S
Nozzle size		65µm
Maximum number of print lines		Up to 6 lines
Maximum number of print characters		Up to 1,000 characters
Font (Horizontal x Vertical)	4 x 5	✓
	5 x 5	✓
	5 x 7(8),9 x 7(8)	✓
	7 x 10	✓
	11 x 11	✓ (Chinese only)
	10 x 12	✓
	12 x 16	✓
	18 x 24	✓
	24 x 32	✓
	30 x 40	✓
	36 x 48	✓
Character height		2 - 10 mm
Display & input device		WYSIWYG design Display: TFT LCD (10.4" color), backlight provided Input device: Touch panel, input sound provided
Screen language (2 languages selectable)		English, Chinese, Korean, Thai, Vietnamese, German, French, Dutch, Italian, Spanish, Portuguese, Swedish, Danish, Greek, Russian, Czech, Polish, Arabic, Serbian, Turkish, Hungarian, Bulgarian, Catalan, Romanian, Finnish, Norwegian, Slovenian
Maximum print rate (Characters per second) (Font 5x5, space 1, 1 line)		Up to 2,083 ((JP-W89 Ink)
Standard characters		Alphanumeric (A-Z, a-z, 0-9 (, symbols (27) and space: Total 90
User patterns		200 patterns each for dot matrix
Print functions		Calendar, Count, Font mixture
Barcode printing		code39, ITF, NW-7, EAN-13, EAN-8, UPC-A, UPC-E, code128/EAN-128, GS-1 DataBar
2D code printing		Data Matrix (Alphabet: 49 characters/Numerals: 98 characters), QR, Micro QR code
Message storage capacity		Up to 2,000 Messages (Depends on data content)
Input signal		Print target detection, Printing stop, Rotary encoder pulse, Reciprocative printing, Remote control (Run, Stop, High-voltage ON/OFF, Reset), (NPN/PNP Selectable)
Output signal		Print in progress or Print complete, Online (NPN/PNP Selectable), Print ready, Fault, Warning (NPN Only)
Data interface		RS-232C at baud rates selectable up to 115,200bps
Ethernet		IEEE802.3, 100BASE-T
External memory		USB for user data storage
Printhead cable length / angle		4m (in-line/90 degrees)
Operating temperature range		0-40 ((JP-W89 Ink)
Operating humidity range		30-90% RH (no condensation)
Power supply (Automatic voltage selection)		AC100-120/220-240V±10% 50/60Hz 120VA
Approval		CE, UL, cUL, RCM, FCC, ICES
Dimensions (Width x Depth X Height)		400 x 320 x 527 mm
International protection		IP65
Approximate weight		27kg

- Hitachi Industrial Equipment Systems Co., Ltd. (Hitachi) shall not be liable for any manufacturing loss, or any product damage due to trouble or malfunction of the ink jet printer.
- Hitachi continually improves products. The right, therefore, is reserved to alter the designs and/or specifications without giving prior notice.
- Information in this brochure is subject to change without notice.

Information in this brochure is subject to change without notice.

 **Hitachi Industrial Equipment Systems Co., Ltd.**
For further information, please contact your nearest sales representative.



Premium Coding Solutions

Premium Coding Solutions

UG-02,Classic Diamond ,WB-94, Sch.No.94,
Viajay Nagar,Indore (M.P)-452010.
Email Id - sales@premiumcodingsolutions.in | Website -www.premiumcodingsolutions.com
Tel: 0731-4978060 | Mob No.9109958391



Registration number: JQA-QMA12087
Registration date: April 1, 2005

The Marking Systems and Hoist Systems Division
(Taga Division) of Hitachi Industrial Equipment
Systems Co., Ltd. obtained international standard
ISO 9001 certification for the quality assurance of
the Ink Jet Printer contained in this brochure.