

**HITACHI**  
Inspire the Next

*Ink Jet Printer*

# *UX Series*

**UX-D150W / UX-D110W / UX-D140W**

THE WIDE WORLD



# The world leader in coding

Hitachi, which manufactured the first Japanese industrial inkjet printer in 1975, has boasted of a high achievement worldwide ever since, not to mention the Japanese market, as a reliable and leading brand of coding.

Hitachi industrial IJ printer UX Series is a global model with highly evolved “Reliability”, “Simplicity”, and even “Eco-friendly” performance.

We will change the coding scene of the world.

**Higher functionality and easier installation  
for a variety of printing needs.**

**Its evolution has also realized ease of  
use and maintainability.**

Hitachi industrial IJ printers are high-speed printers adopting a non-contact type of printing method, in which the drops of ink fly in the air. It can print on a variety of products manufactured on production lines, which are made of metals, plastics, films, papers, etc. Its speed, flexibility, reliability, and durability are really impressive. Durability in harsh environment and ease of use have also been greatly improved. We are bringing excitement to the coding and marking industry.

Feature [1]

# ECOLOGY

Environmentally friendly  
while realizing  
a low running cost

# 環



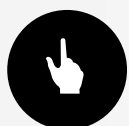
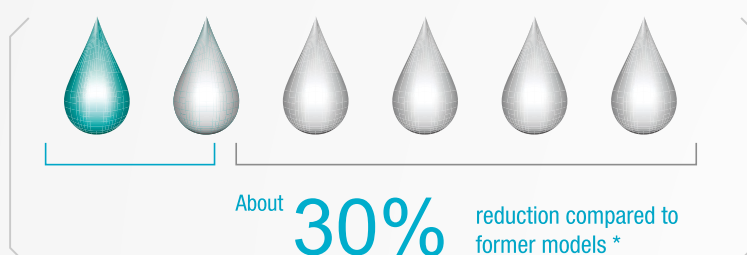
## Hitachi original Makeup fluid consumption reduction system has Significantly-reduced running cost.

The ink recovery control and device temperature control provided by the new technology of Makeup fluid consumption reduction system suppress the amount of makeup vaporized and achieve industry-leading levels of makeup consumption.

### Reduction of makeup fluid consumption

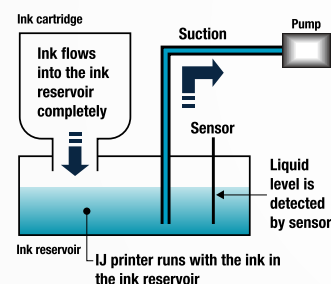
#### UX-B, UX-D

\* With 1067K ink at 20°C.



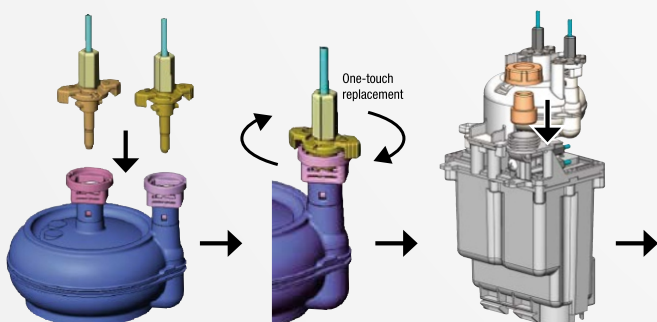
## Eco-friendly because the ink and the makeup fluid in the cartridge can be consumed right up to the last drop.

It is not necessary to stop the production line to replace the cartridges. An eco-system of a simple cartridge-type bottle can be replaced after the ink or makeup fluid is completely consumed and is also easily disposed of.



## Each part can be replaced separately, and filter replacement is also easy.

The IJ printer is so designed that the minimal part or module can be replaced rather than replacing the whole unit. The ink filter can also be removed and replaced easily without any tools just by rotating the joint. It's a one-touch operation.



## Feature [2]

# RELIABILITY

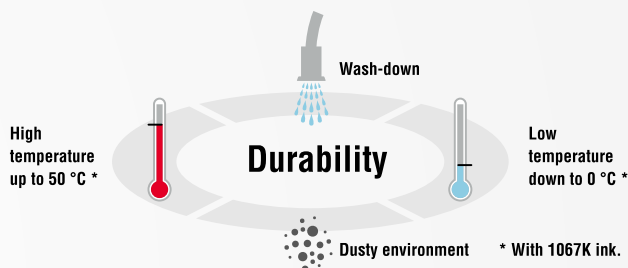
High reliability, and  
reassured maintenance  
and service networks

信



## Designed for harsh environments

The stainless steel cabinet offers IP65 and allows a wash-down with pressured water and industrial detergent, to meet any environment and hygiene requests. The UX Series with IP65 protection is the ideal choice for applications in the meat and dairy sectors.



## Automatic nozzle cleaning / Nozzle backwash

Automatic cleaning starts by one press of a button and there is no need to wait for its completion since the power turns off automatically when it is finished. Even if the nozzle gets clogged, it can be easily recovered by the nozzle backwash function that is opposite of the normal ink ejection, in which the fluid is sucked through the nozzle.

### ■ Automatic nozzle cleaning

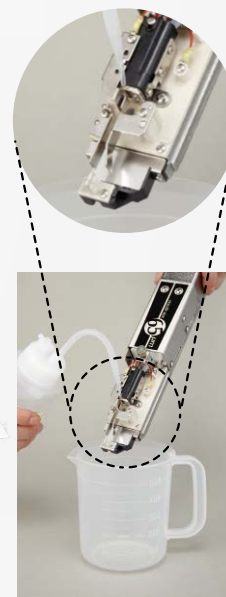
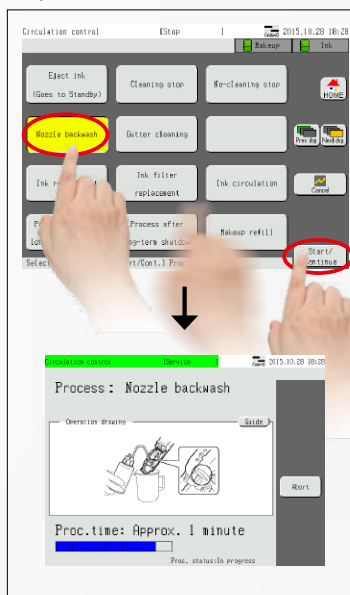


Press [STOP]



Automatic cleaning starts and then the power turns off automatically when cleaning completes.

### ■ Operation screen of nozzle backwash



## Made in Japan

Hitachi industrial IJ printers are manufactured with the know-how and technology that have been accumulated since 1975 in Hitachi City where Hitachi was first founded.

After production, all printers have to pass Hitachi's strict quality management before shipment. We provide quality products to our customers worldwide.





# USABILITY

Simple touch panel  
operation and  
maintainability

# 操



## Totally-new user interface!

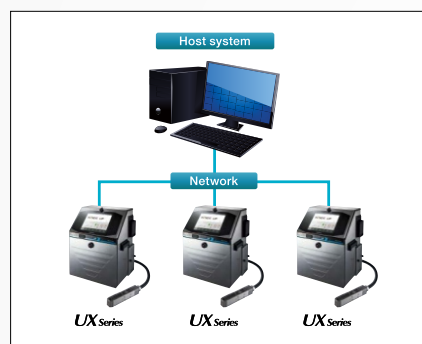
Intuitive operations with a new readily-understandable screen design is now adopted. Most of the operations can be completed on one screen with a simplified and well-arranged design. Complicated operations are not required to obtain the necessary information thereby improving usability.



## Enhanced network functionality by improving compatibility with the host system

Configuration of an IoT\* system can be smoothly realized using simple wiring because of the standard Ethernet feature and open network compatibility. By collectively managing multiple devices from the host system, the information gathering and operations become more efficient.

\* Internet of Things

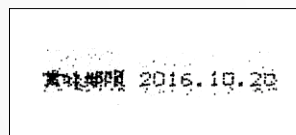


Note: UX-B is excluded.

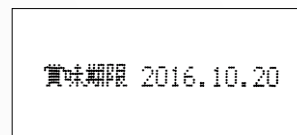


## Ink conditioning management to maintain print quality

By monitoring both the ink viscosity and the ink consumption, the ink viscosity is always kept in the best condition.



Print sample without ink conditioning



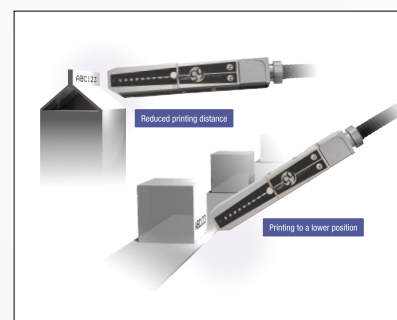
Print sample with ink conditioning



## Excellent printhead shape

Tapered shape at the tip of the printhead reduces the distance between the work and the printhead. Printing to the lower position is now made possible. The printhead with anti-corrosion plating keeps working in severe environment.

\* Corresponding models: For small characters and high-speed printing



## New printing technology, 6-line print compatible for a wider variety of needs

6-line print from one printhead is made possible.

Even with multiple print lines, Hitachi original interlaced-print-control system makes each printed character appear clearly.

For single-line high-speed printing, its print quality is improved with the new print control system.

\* Corresponding models: For small characters



High-speed printing (55μm)

Font (Horizontal × Vertical)		UX-D150W	
5 × 7	1LINE	0123456789ABCDEFGHIJKLMN	
	2LINE	0123456789ABCDEFGHIJKLMN ABCDEFGHIJKLMNOPQRSTUVWXYZ	
	3LINE	0123456789ABCDEFGHIJKLMN ABCDEFGHIJKLMNOPQRSTUVWXYZ 0123456789ABCDEFGHIJKLMN	
	4LINE	0123456789ABCDEFGHIJKLMN ABCDEFGHIJKLMNOPQRSTUVWXYZ 0123456789ABCDEFGHIJKLMN ABCDEFGHIJKLMNOPQRSTUVWXYZ	

Print samples



Larger Small-size characters (100μm)

Font (Horizontal × Vertical)		UX-D110W	
		Standard	Bold
18 × 24		01A	01A
		01A	01A
24 × 32		01A	01A
		01A	01A

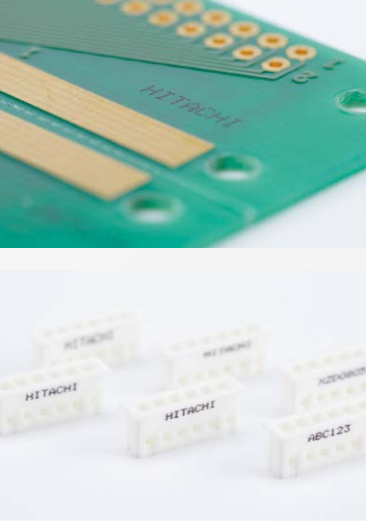
Print samples



Micro characters (40μm)

Font (Horizontal × Vertical)		UX-D140W						
5×5	1LINE	0123456789	2LINE	0123456789 KLMNOPQRST	3LINE	0123456789 IJKLMNOPQR 0123456789	4LINE	0123456789 IJKLMNOPQR 0123456789 IJKLMNOPQR
	2LINE					4LINE		
12×16	1LINE	01234ABCDEアイウエオ				2LINE	01234 ABCDE	
	2LINE					4LINE		

Print samples

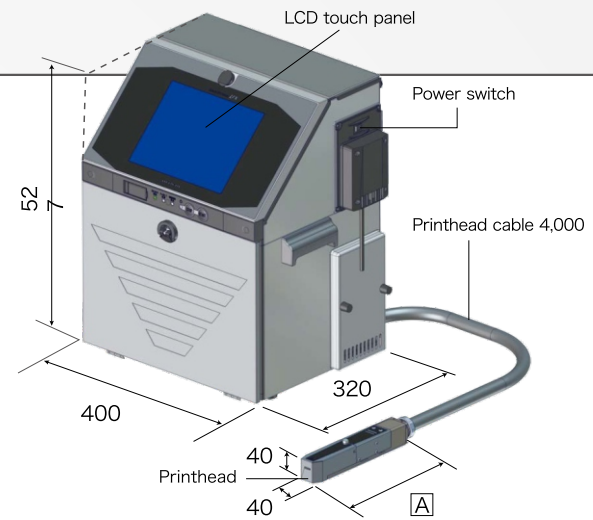


## Dimensions of main unit (Unit: mm)

### Main unit

p-t---

	t-IJ
v--	ghk
v-b-	ghk
v--b-	gih
v--	gfn



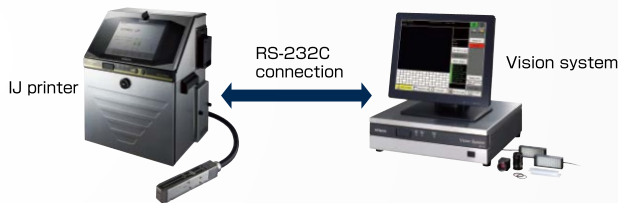
Note : Main unit dimensions do not include any projections.

## Software options

Z●-----C

### Linking with Vision system

- 
- Z●-C
- printed
- 
- n
- a-----C--



### Barcode reader connection function

--

Barcode content read by the barcode reader is transmitted as Character strings and set as print content.

S---

Barcode content read by the barcode reader is treated as Call up code and the print data corresponding to the Call up code will be called up.

### Special communication functions and External signal functions

Function	Detail
<b>Print content output</b>	Outputs Print content to an external device via serial communication when the printer receives an Inquiry about print content from an external device or right after completion of printing.
<b>Print completion code output</b>	Outputs Print completion code to an external device right after completion of printing.
<b>Status output</b>	Outputs IJ printer status to an external device when operation status changes or an Inquiry about status from an external device is received.
<b>External signal count</b>	Update count according to the external signal. 

Function	Detail
<b>Print content switching</b>	Print content, which is sent via communication and stored temporarily, will be printed at the time of external signal input.
<b>Output on calendar update</b>	Outputs signal when the print content is updated by the calendar.
<b>External signal reset</b>	Print content of the count digit is set to a reset value at the input of an external signal. 
<b>Calling up print data</b>	Calls up registered print data by external signal.
<b>Output notifying completion of signal input</b>	When an external signal of the count, reset, print content switching or print data call up is input, signal will be output.

## Related products

### Vision system

#### Good partner to improve printing reliability

Instantly checks for print errors of date, serial number, etc. Hitachi original cross-check inspection method (Adjustable matching method) is adopted so that the recognition close to the human eyes is made possible.



Item		High-speed printing	Larger Small-size Characters	Micro Characters
		UX-D150W	UX-D110W	UX-D140W
Nozzle size		55µm	100µm	40µm
Max. print line number		Up to 4 lines		
Maximum number of print characters		Up to 1,000 characters		
Font (Horizontal×Vertical)	4 × 5	✓		
	5 × 5	✓		
	5 × 7(8), 9 × 7(8)	✓		
	7 × 10	✓		
	11 × 11	—		✓ (Chinese only)
	12 × 16	✓		
	18 × 24	✓ *2	✓	
	24 × 32	—	✓	
Character height		2-8mm	3-15mm	1-5mm
Display & input device		WYSIWYG design Display: TFT LCD (10.4 color), backlight provided Input device: Touch panel, input sound provided		
Screen language ( 2 languages selectable )		English, Chinese, Korean, Thai, Vietnamese, German, French, Dutch, Italian, Spanish, Portuguese, Swedish, Danish, Greek, Russian, Czech, Polish, Arabic, Serbian, Turkish, Hungarian, Bulgarian, Catalan, Romanian, Finnish, Norwegian, Slovenian		
Maximum print rate (Characters per second) (Font 5x5, space 1, 1 line)		Up to 3,173	Up to 468	Up to 3,030
Standard characters		Alphanumeric (A-Z, a-z, 0-9), symbols (27) and space: Total 90		
User pattern		200 patterns each for dot matrix		
Print functions		Calendar, Count, Font mixture, Password		
Barcode printing		code39, ITF, NW-7, EAN-13, EAN-8, UPC-A, UPC-E, code128/EAN-128, GS-1 DataBar		
2D code printing		Data Matrix (Alphabet: 49 characters/Numerals: 98 characters), QR code*2, Micro QR code		
Message storage capacity		300 messages [Option : Up to 2,000 messages ( Depends on data content)]		
Input signal		Print target detection, Printing stop, Rotary encoder pulse, Reciprocatve printing, Remote control (Run, Stop, High-voltage ON/OFF, Reset), (NPN/PNP Selectable)		
Output signal		Print in progress or Print complete, Online (NPN/PNP Selectable), Print ready, Fault, Warning (NPN Only)		
Data interface		RS-232C at baud rates selectable up to 115,200bps		
Ethernet (Modbus communication)		IEEE802.3 , 100BASE-T		
External memory		USB for user data storage		
Printhead cable length / angle		4m (in-line/90 degrees)		
Operating temperature range		0-40°C (1067K Ink)	0-35°C (1067K Ink)	
Operating humidity range		30-90% RH (no condensation)		
Power supply (Automatic voltage selection)		AC100-120/220-240V±10% 50/60Hz 120VA		
Approval		CE, UL, cUL, C-Tick, FCC, ICES		
Dimensions (Width x Depth x Height)		400 x 320 x 527 mm		
International protection		IP65		
Approximate weight		27Kg		

\*2 Please consult your nearest sales representative when "18×24 font" or "QR code" is required with UX-D for High-speed printing.



Information in this brochure is subject to change without notice.

**Hitachi Industrial Equipment Systems Co., Ltd.**

For further information, please contact your nearest sales representative.



Premium Coding Solutions

**Premium Coding Solutions**

UG-02, Classic Diamond , WB-94, Sch.No.94,  
Viajay Nagar, Indore (M.P)-452010.

Email Id - sales@premiumcodingsolutions.in | Website - www.premiumcodingsolutions.com  
Mob No.9109958391



Registration number: JQA-QMA12087

Registration date: April 1, 2005

The Marking Systems and Hoist Systems Division (Taga Division) of Hitachi Industrial Equipment Systems Co., Ltd. obtained international standard ISO 9001 certification for the quality assurance of the Ink Jet Printer contained in this brochure.