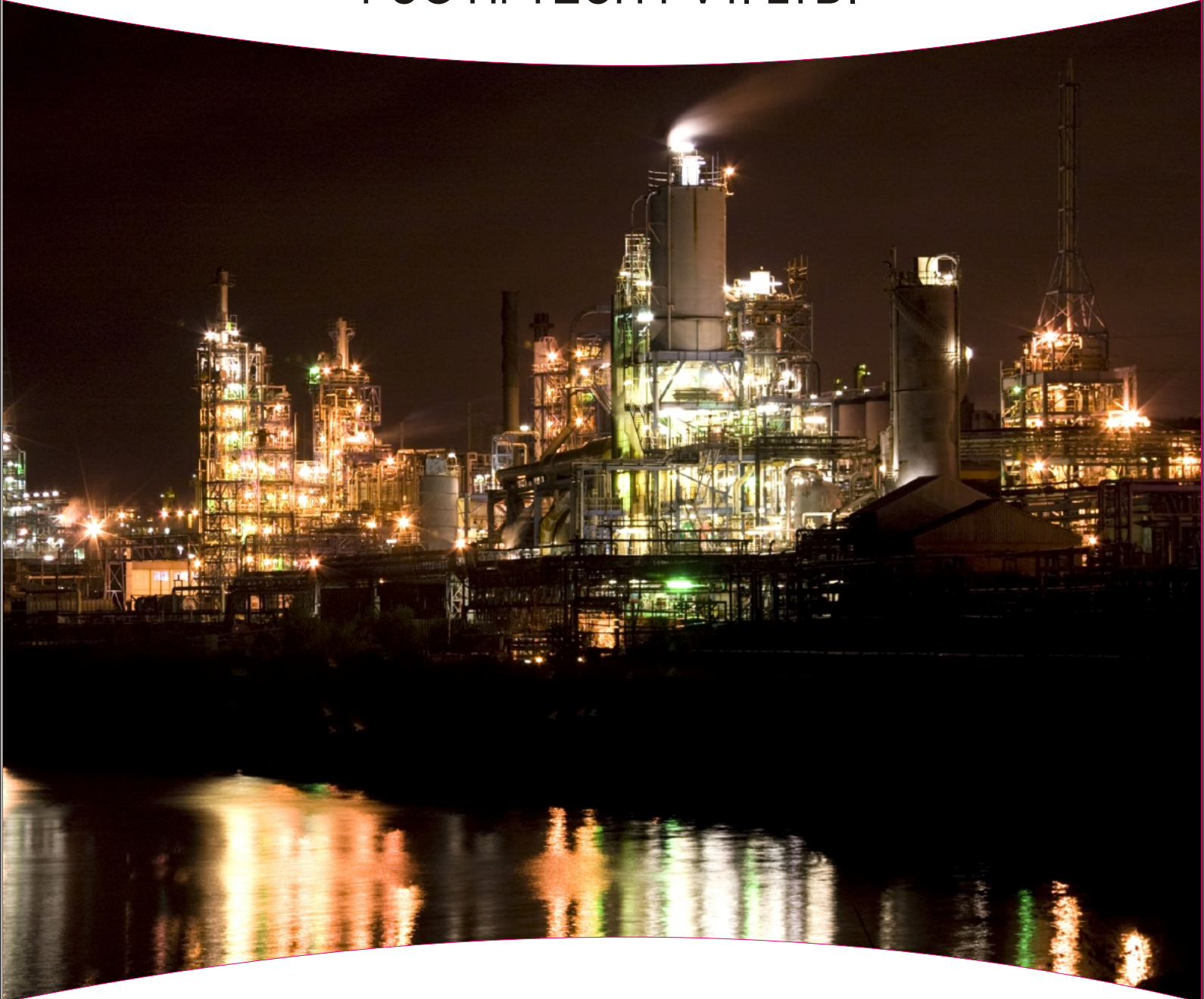




FCG HI-TECH PVT. LTD.



Experts in Explosionproof

www.fcghitech.com





FCG Hi-Tech PROFILE

We at FCG Hi- tech are leaders in design, development & manufacture of high technology quality products of various types of electrical equipments , which are meant for sale application in hazardous locations.

Explosion protected equipments are meant for installation and use in these hazardous locations to ensure safety of plant, equipment and personnel and to ensure safety and reliability of operation in explosible as well as explosive atmospheres. Our products are already recognized in various industries such as Petrochemical, Refinery, Oil and Gas, Oil Mines, Pesticides, Chemicals, Fertilizers, Bulk Drugs, Pharmaceuticals and Ordnance Factories.

FCG Hi- Tech offers a comprehensive & technologically innovative range of explosion protected equipments complying with all common international standards.

We at FCG Hi-Tech attentively develop & manufacture electrical equipments of high standards and explosive safety applications. These applications comply with established international directives, laws, standards and regulations.

FCG Hi-Tech's manufacturing unit is equipped with state of art machine shop, paint shop, assembly layout with CAD and design facilities makes it one of the best source in India.

Our aim is to assist our esteemed customers in selection of appropriate equipment. If you desire to know more about our products.

OUR VISION

Providing state of art cost effective Ex- proof Solutions to the clients by persistent innovation in Technology, Quality & Services.

Our Commitment :

Our Focus on supporting "Go Green – Energy Management" i.e. designing & fostering products which Protect & Control & Comprehensively manage Mankind's' greatest asset by serving a Class, Wide Variety of Flame proof product ranges across the world.

CERTIFICATIONS

- 1.ISO 9001- 2008
2. ATEX Certified
3. Indian Standard Organization Certified with CMRI (Central Institute of Mining & Fuel Research)
4. ERTL : Electronics Regional Test Laboratory
5. PESO : Petroleum and Safety Organization
6. BIS : Bureau of Indian Standards
7. DGMS : Director General Mining Safety



OUR VALUED PATRONS



Abbott Laboratories

AKER KJÆRNER



asianpaints

BASF
The Chemical Company

BAYER
Bayer



Burckhardt Compression



CHAMBAL FERTILISERS AND CHEMICALS LIMITED

Cipla



DRESSER-RAND

دبي للبترول
Dubai Petroleum



Emcure



ESSAR
ENERGY

EXXON

FOSTER WHEELER

FLOWSERVE

GAIL (India) Limited

GE
Oil & Gas

GNFC



IFFCO

JINDAL
STEEL & POWER

JOTUN



KRIBHCO



LUPIN

Lurgi

Maire
Tecnimont

MICRO INKS



NOVARTIS

NUMALIGARH
REFINERY
LIMITED



Oiltanking

Orchid Chemicals
Pharmaceuticals Ltd.
Shaping A Dream



PCC
ROKITA

PEPPERL+FUCHS

PETROBRAS

Petrofac

Petronet



Pfizer

Punj Lloyd RANBAXY

Reliance
Growth is Life



SAAB ROSEMOUNT

SAMSUNG

SANDOZ

SCCL

Schlumberger

SAUDI CEMENT COMPANY

Technip

TECNIMONT

THERMAX



torrent

TOYO
ENGINEERING
INDIA LTD.



UHDE

WOCKHARDT
Healthcare is in our genes

WorleyParsons
resources & energy





PRODUCTS SHOWCASE



Flameproof Lighting



Type No. :
MCL-2.5LMP

Description :
INTRINSIC SAFETY (Ex-ia)
SUITABLE FOR USE IN GAS
GROUP I, IIA, IIB, IIC
AREAS PER IS/IEC 60079-
11:2006



Type No. :
FCG 7300

Description :
Ex IA 2C T6 / IP66
Rechargeable LED Based
Hand Torch with Li-ion Battery.



Type No. :
LW 31200

Description :
Ex-d IIA/B, Non- Integral
Wellglass suitable for 2x26W
CFL, 160W MLL, 200W GLS,
70W MH/HPSV and 80/125W
HPMV.



Type No. :
LW 51200

Description :
Ex-d IIA/B/C, Non-Integral
Wellglass suitable for 160W
MLL, 200W GLS, 70W
MH/HPSV and 80/125W
HPMV



Type No. :
LC 51125

Description :
Ex-d IIA/B Controlgear Box
suitable for lamp upto 125W
HPMV and 70W MH/HPSV



Type No. :
LW 31400/LW 61400

Description :
Ex-d IIA/B/C, Non Integral
Wellglass suitable lamp for
400W HPMV and 250W
HPSV/MH



Type No. :
LC 31400/LC 61400

Description :
Ex-d IIA/B/C Control gear Box
suitable for lamp 250/400W
HPMV and 250W MH/HPSV



Type No. :
LW 51125

Description :
Ex-d IIA/B/C, Integral
Wellglass suitable for 70W
MH/HPSV and 80/125W
HPMV



Type No. :
LW 31250/LW 61250

Description :
Ex-d IIA/B/C, Integral
Wellglass Fitting suitable for
lamp upto 250W HPMV, 150W
MH/HPSV



Type No. :
LB 31201/LB 61201

Description :
Ex-d IIA/B/C Bulkhead Fitting
suitable for lamp 160W MLL,
2x26W CFL, 70W MH/HPSV
and 125W HPMV



Type No. :
LB 31201

Description :
Ex-d IIC Bulkhead Fitting
suitable for 160W MLL,
2x26W CFL, 70W MH/HPSV
and 125W HPMV Lamp



Type No. :
LB 31...Series

Description :
Ex-d IIA/B Bulkhead fitting
suitable for



PRODUCTS SHOWCASE



Flameproof Lighting



Type No. :
LB 31 series

Description :
Ex-d IIA/B Bulkhead suitable for 160W MLL, 2x26W CFL, 70W MH/HPSV and 125W HPMV Lamp



Type No. :
LH 31060/LH 61060

Description :
Ex-d IIA/B/C, Hand Lamp fitting suitable for lamp upto 100W GLS



Type No. :
FCG/RV/103-1/RV 61100

Description :
Ex-d IIA/B/C, Reaction Vessel Lamp Fitting suitable for Lamp upto 100W GLS, 23W CFL



Type No. :
LF 31400/LF 61400

Description :
Ex-d IIA/B/C, Flood Light Fitting suitable for upto 400W HPMV, 250W MH/HPSV, 500W GLS



Type No. :
LW 51200

Description :
Ex-d IIA/B/C, Twin Aviation Light Fitting Red LED lamp



Type No. :
LC 21.. Series

Description :
Ex-e Control Gear Box suitable upto 400W HPMV



Type No. :
LT 31240

Description :
Ex-d IIA/B, Tubelight Fitting suitable for 2x36/40W Tube rod



Type No. :
LT 31140

Description :
Ex-d IIA/B, Tube Light Fitting suitable for 1x36/40W Tube rod



Type No. :
40031

Description :
Ex 'nR' Non Integral Wellglass Fitting suitable for lamp 125W HPMV, 70W MH/HPSV and 160W MLL, 200W GLS



Type No. :
FCG/W/403-4

Description :
Ex-e Non Integral wellglass Fitting suitable for 250W HPMV, 150W MH/HPSV and 250W MLL, 300W GLS



Type No. :
FCG/W/403-3

Description :
Ex-e Non Integral wellglass Fitting suitable for 400W HPMV, 250W MH/HPSV and 500W GLS



Type No. :
NLLK 96 .series

Description :
Ex-e 2x20W and 2x40W Tube Light Fitting



PRODUCTS SHOWCASE



LED Lighting>>>Ex-d LED Fixtures



Type No. :
LW 51200

Description :
Ex-d GAS Gr. IIA & IIB & IIC 30W LED,
WELL GLASS FIXTURE
REPLACES 160 W MLL, 2X26W PL &
2X20 / 23 W CFL LAMP

**ENERGY EFFICIENT AS IT
CONSUMES ONLY 30 W**



Type No. :
LW 51125

Description :
Ex-d GAS Gr. IIA & IIB & IIC 45W LED,
WELL GLASS FIXTURE
REPLACES 125W HPMV, 80W HPMV
& 70W MH LAMP

**ENERGY EFFICIENT AS IT
CONSUMES ONLY 45 W**



Type No. :
LW 61250

Description :
Ex-d GAS Gr. IIA & IIB & IIC 60W LED
WELL GLASS FIXTURE
REPLACES 250W HPMV & 150W MH,
LAMP

**ENERGY EFFICIENT AS IT
CONSUMES ONLY 60 W**



Type No. :
RV 61100

Description :
Ex-d GAS Gr. IIA & IIB & IIC 7W LED
REACTION VESSEL LAMP
REPLACES WITH 100W GLS,60W
GLS & 20/23 W CFL LAMP

**ENERGY EFFICIENT AS IT
CONSUMES ONLY 7W**



Type No. :
LF 61200

Description :
Ex-d GAS Gr. IIA & IIB & IIC 60W
LED,LED FLOOD LIGHT FIXTURE
REPLACES 250W HPMV & 150W MH,
LAMP

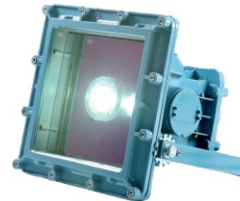
**ENERGY EFFICIENT AS IT
CONSUMES ONLY 60W**



Type No. :
LF 61400

Description :
Ex-d GAS Gr. IIA & IIB & IIC 90W LED,
LED FLOOD LIGHT FIXTURE
REPLACES 400W HPMV & 250W MH,
LAMP

**ENERGY EFFICIENT AS IT
CONSUMES ONLY 90W**



Type No. :
ALF 31400

Description :
Ex-d GAS Gr. IIA & IIB 90W LED
FLOOD LIGHT FIXTURE
REPLACES 400W HPMV & 250W MH,
LAMP

**ENERGY EFFICIENT AS IT
CONSUMES ONLY 90W**



Type No. :
LB 31...series

Description :
Ex-d GAS Gr. IIA & IIB 20W LED, 30W
LED,LED BULKHEAD FIXTURE
30W LED REPLACES WITH 160W
MLL, 2X26W PL,2X20/23W CFL LAMP

**ENERGY EFFICIENT AS IT
CONSUMES ONLY 30W**



Type No. :
LT 31140

Description :
Ex-d GAS Gr. IIA & IIB 1X20W LED
TUBE LIGHT FIXTURE
REPLACES 1X36/40W FTL



Type No. :
LB 31240

Description :
Ex-d GAS Gr. IIA & IIB 2X20W
LED,LED TUBE LIGHT FIXTURE
REPLACES 2X36/40W FTL

**ENERGY EFFICIENT AS IT
CONSUMES ONLY 2X20W**



PRODUCTS SHOWCASE



LED Lighting>>>Ex 'ia' LED Portable Lights



Type No. :
FCG 7300

Description :
INTRINSIC SAFETY(Ex-ia)SUITABLE FOR USE IN GAS GROUP I,IIA, IIB, IIC AREA AS PER IS/IEC 60079-11:2006



Type No. :
MCL-2.5LMP

Description :
INTRINSIC SAFETY(Ex-ia)SUITABLE FOR USE IN GAS GROUP I,IIA, IIB, IIC AREA AS PER IS/IEC 60079-11:2006

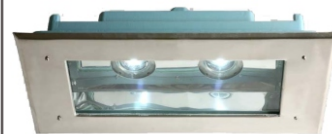
LED Lighting>>>Ex-d Cleanroom Fixtures



Type No. :
LB 31..series

Description :
Ex-d GAS Gr. IIA & IIB 20W/30W LED CLEAN ROOM LED BULKHEAD FIXTURE
30W LED REPLACES WITH 160W MLL, 2X26W PL, 2X20/23W CFL LAMP

ENERGY EFFICIENT AS IT CONSUMES ONLY 30 W



Type No. :
LT 51236

Description :
Ex-d GAS Gr. IIA & IIB 2X20W LED, 2X30W LED, CLEAN ROOM LED FIXTURE
2X20W LED REPLACES 2X36W PL, 125/80W HPMV & 70W MH LAMP:ENERGY EFFICIENT AS IT CONSUMES ONLY 40W.
2X30W LED REPLACES 3X36W PL, 250W HPMV & 150W MH LAMP:ENERGY EFFICIENT AS IT CONSUMES ONLY 60W.

LED Lighting>>>Ex 'nR' LED Fixtures



Type No. :
40031-'nR' LW-30

Description :
Ex 'nR' RESTRICTED BREATHING AS PER 30W LED, EX 'nR' LED GLASS FIXTURE
REPLACES 160W MLL, 2X26W PL & 2X20/23W LAMP

ENERGY EFFICIENT AS IT CONSUMES ONLY 30W



Type No. :
40031'nR' LW-45

Description :
Ex 'nR' RESTRICTED BREATHING AS PER 45W LED EX 'nR' LED WELL GLASS FIXTURE
REPLACES 125W HPMV, 80W HPMV & 70W MH LAMP

ENERGY EFFICIENT AS IT CONSUMES ONLY 45W



Type No. :
40031-'nR' LW-60

Description :
Ex 'nR' RESTRICTED BREATHING AS PER 60W LED EX 'nR' LED WELL GLASS FIXTURE
REPLACES 150W MH, 250W HPMV LAMP

ENERGY EFFICIENT AS IT CONSUMES ONLY 60W



Type No. :
40031-'nR' LW-90

Description :
Ex 'nR' RESTRICTED BREATHING AS PER 90W LED EX 'nR' LED WELL GLASS FIXTURE
REPLACES 400W HPMV, 250W MH

ENERGY EFFICIENT AS IT CONSUMES ONLY 90W



Type No. :
40031 - 'nR' BF-30

Description :
Ex 'nR' RESTRICTED BREATHING AS PER 30W LED EX 'nR' LED BAY FIXTURE
REPLACES 160W MLL, 2X26W PL, 2X20/23W LAMP

ENERGY EFFICIENT AS IT CONSUMES ONLY 30W



Type No. :
40031 - 'nR' BF-45

Description :
Ex 'nR' RESTRICTED BREATHING AS PER 45W LED EX 'nR' LED BAY FIXTURE
REPLACES 125W HPMV, 80W HPMV & 70W MH, LAMP

ENERGY EFFICIENT AS IT CONSUMES ONLY 45W



Type No. :
40031 - 'nR' BF-60

Description :
Ex 'nR' RESTRICTED BREATHING AS PER 60W LED EX 'nR' LED BAY FIXTURE
REPLACES 250W HPMV, 150W MH, LAMP

ENERGY EFFICIENT AS IT CONSUMES ONLY 60W



Type No. :
40031 - 'nR' BF-90

Description :
Ex 'nR' RESTRICTED BREATHING AS PER 90W LED EX 'nR' LED BAY FIXTURE
REPLACES 400W HPMV, 250W MH, LAMP

ENERGY EFFICIENT AS IT CONSUMES ONLY 90W



PRODUCTS SHOWCASE



LED Lighting>>>Ex 'nR' LED Fixtures



Type No. :
40031 - 'nR' LF-45

Description :
Ex 'nR' RESTRICTED BREATHING AS
PER 45W LED EX 'nR' LED FLOOD
LIGHT FIXTURE
REPLACES 125W HPMV,80W HPMV
& 70 MH,LAMP

**ENERGY EFFICIENT AS IT
CONSUMES ONLY 45W**



Type No. :
40031 - 'nR' LF-60

Description :
Ex 'nR' RESTRICTED BREATHING AS
PER 60W LED EX 'nR' LED FLOOD
LIGHT FIXTURE
REPLACES 150W MH,250W HPMV
LAMP

**ENERGY EFFICIENT AS IT
CONSUMES ONLY 60W**



Type No. :
40031 - 'nR' LF-90

Description :
Ex 'nR' RESTRICTED BREATHING AS
PER 90W LED EX 'nR' LED FLOOD
LIGHT FIXTURE
REPLACES 400W HPMV,250W MH

**ENERGY EFFICIENT AS IT
CONSUMES ONLY 90W**

LED Lighting>>>Industrial Weatherproof LED Fixt.



Type No. :
40031 - WP LW-30

Description :
30W LED INDUSTRIAL
WEATHERPROOF LED WELL GLASS
FIXTURE
REPLACES 160W MLL,2X26W PL &
2X20/23W LAMP

**ENERGY EFFICIENT AS IT
CONSUMES ONLY 30W**



Type No. :
40031 - WP LW-45

Description :
45W LED INDUSTRIAL
WEATHERPROOF LED WELL GLASS
FIXTURE
REPLACES 125W HPMV,80W HPMV
& 70W MH LAMP

**ENERGY EFFICIENT AS IT
CONSUMES ONLY 45W**



Type No. :
40031 - WP LW-60

Description :
60W LED INDUSTRIAL
WEATHERPROOF LED WELL GLASS
FIXTURE
REPLACES 150W MH,250W HPMV
LAMP

**ENERGY EFFICIENT AS IT
CONSUMES ONLY 60W**



Type No. :
40031 - WP LW-90

Description :
90W LED INDUSTRIAL
WEATHERPROOF LED WELL GLASS
FIXTURE
REPLACES 400W HPMV,250W MH

**ENERGY EFFICIENT AS IT
CONSUMES ONLY 90W**



Type No. :
40031 - WP LW-30

Description :
30W LED INDUSTRIAL
WEATHERPROOF LED BAY FIXTURE
REPLACES 160W MLL,2X26W PL &
2X20/23W LAMP

**ENERGY EFFICIENT AS IT
CONSUMES ONLY 30W**



Type No. :
40031 - WP LW-45

Description :
45W LED INDUSTRIAL
WEATHERPROOF LED BAY FIXTURE
REPLACES 125W HPMV,80W
HPMV,& 70W MH, LAMP

**ENERGY EFFICIENT AS IT
CONSUMES ONLY 45W**



Type No. :
40031 - WP LW-60

Description :
60W LED INDUSTRIAL
WEATHERPROOF LED BAY FIXTURE
REPLACES 250W HPMV,150W
MH,LAMP

**ENERGY EFFICIENT AS IT
CONSUMES ONLY 60W**



Type No. :
40031 - WP LW-90

Description :
90W LED INDUSTRIAL
WEATHERPROOF LED BAY FIXTURE
REPLACES 400W HPMV,250W
MH,LAMP

**ENERGY EFFICIENT AS IT
CONSUMES ONLY 90W**



PRODUCTS SHOWCASE



LED Lighting>>>Industrial Weatherproof LED Fixt.



Type No. :
40031 - WP LW-45

Description :
45W LED INDUSTRIAL
WEATHERPROOF FLOOD
LIGHT LED FIXTURE
REPLACES 125W
HPMV,80W HPMV & 70W MH
LAMP



Type No. :
40031 - WP LW-60

Description :
60W LED INDUSTRIAL
WEATHERPROOF FLOOD
LIGHT LED FIXTURE
REPLACES 150W MH,250W
HPMV LAMP



Type No. :
40031 - WP LW-90

Description :
90W LED INDUSTRIAL
WEATHERPROOF FLOOD
LIGHT LED FIXTURE
REPLACES 400W
HPMV,250W MH,LAMP



Type No. :
LT 74240

Description :
90W LED INDUSTRIAL
WEATHERPROOF LED
TUBE LIGHT FIXTURE
REPLACES 2X36/40W FTL
ENERGY EFFICIENT AS IT

Flameproof Switchgears



Type No. :
PB 31202

Description :
Ex-d IIA/B, Push Button
Station



Type No. :
PB 31207

Description :
Ex-d IIA/B, Rotary Switch upto
25A, 415V



Type No. :
PB 31254

Description :
Ex-d IIA/B, Switch Socket
upto32A, 415V



Type No. :
PB 31209

Description :
Ex-d IIA/B, Fire Alarm Station



Type No. :
PA 31000

Description :
Ex-d IIA/B, Local Control
Station



Type No. :
IJ 31010

Description :
Ex-d IIA/B, Limit Switch with
Top Push Roller



Type No. :
IJ 31110

Description :
Ex-d IIA/B, Limit Switch with
adjustable Roller



Type No. :
RS 31635

Description :
Ex-d IIA/B, 63A 5 pin Switch
Socket Combined



PRODUCTS SHOWCASE



Flameproof Panels



Type No. :
DB 31340

Description :
Ex-d 18W Distribution Board



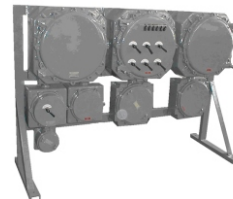
Type No. :
SC 61500+SC 61265

Description :
Ex-d, IIC SOOT BLOWER



Type No. :
SC 316550

Description :
Ex-d, IIA/IIB PLC BASED
CONTROL PANEL



Type No. :
SC 61500

Description :
Ex-d, IIC CONTROL PANEL

Flameproof Clean Room Fittings



Type No. :
PB 31202

Description :
Ex-d Clean Room Push
Button Station



Type No. :
PB 31207

Description :
Ex-d Clean Room Rotary
Switch upto 25A, 415V



Type No. :
PB 31254

Description :
Ex-d Clean Room Switch
Socket upto 32A/5pin



Type No. :
CLT 22..series

Description :
Ex-e Clean Room Light
Fittings (Bottom Opening)



Type No. :
LB 61125

Description :
Ex-d Clean Room Bulkhead
Fitting suitable for 125W
HPMV and 70W MH/HPSV



Type No. :
LB 31223

Description :
Ex-d Clean Room Bulkhead
Fitting suitable for 2x23W CFL
and 2x26W PL (Bottom
Opening)



Type No. :
LB 31226

Description :
Ex-d Clean Room Bulkhead
Fitting suitable for 2x26W CFL
(Top Opening)



Type No. :
LT 51236

Description :
Ex-d Clean Room Bottom
Opening Fitting suitable for
2x36W CFL (Bottom Opening)



PRODUCTS SHOWCASE



Flameproof Clean Room Fittings



Type No. :
LT 51236

Description :
Ex-d Clean Room Top
Opening Fitting suitable for
2x36WCFL (Top Opening)



Type No. :
LB 31...series

Description :
Ex-d Clean Room Bottom
opening Fitting suitable for
2x26W PL (Bottom Opening)

Flameproof Junction Boxes



Type No. :
IJ 61100

Description :
Ex-d IIC, IP 65, 100 mm dia 4
way Junction Box



Type No. :
IJ 61170

Description :
Ex-d IIC, IP 66, 170 mm dia
Multiway Junction Box



Type No. :
SC 313260

Description :
Ex-d IIC, IP 65, 260 mm dia
Multiway Junction Box



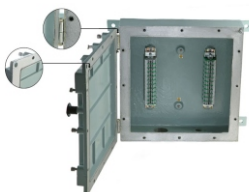
Type No. :
IJ 31340

Description :
Ex-d IIC, IP 66, 340 mm dia
Multiway Junction Box



Type No. :

Description :
Different sizes of Junction
Boxes



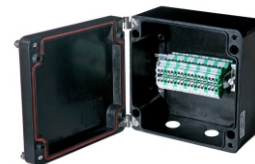
Type No. :
DB 31340

Description :
Ex-d IIA/B, IP 65, Junction
Box with hinge



Type No. :
DB 31340

Description :
Ex-d IIA/B, IP 65, Junction
Box upt 800x400mm



Type No. :
DB 31340

Description :
Ex-d IIA/B, IP 65, Junction
Box upt 800x400mm



PRODUCTS SHOWCASE



Flameproof Junction Boxes



Type No. :
PGRC series

Description :
Ex-e IIC Junction Boxes of different sizes (MOC:- GRP)



Type No. :
IJ series

Description :
Ex-e IIC Junction Boxes of different sizes (MOC:- AI)



Type No. :
JB series

Description :
Ex-e IIC Junction Boxes of different sizes (MOC:- AI)



Type No. :
JBE SS series

Description :
Ex-e IIC Junction Boxes (MOC:- SS) Internal layout

Flameproof Jun. Boxes



Type No. :
JBE SS series

Description :
Ex-e IP65 Junction Box (MOC:- SS)



Type No. :
MCH 3001 / MCH 6001

Description :
Ex d, IIA/B/C Hooter



Type No. :
EF 1002

Description :
Ex d, IIC Air Circulating Fan



Type No. :
EF 1002

Description :
Ex d, IIC Exhaust Fan

Flameproof Telephones



Type No. :
TW 91201 / TW 61001

Description :
Ex d, IIA/B/C Telephone



PRODUCTS SHOWCASE



Flameproof Emergency Lights



Type No. :
LE 31011

Description :
FLP/WP Emergency Light Fitting

Flameproof Accessories



Type No. :
Accessories

Description :
Different accessories like Cable Gland, Stopping Plug, reducers, nipple and Union

Non Metallic Flameproof LCS



Type No. :
P GR C 12 12 09

Description :
Ex-ed IIC Push Button Station



Type No. :
P GR C 25 25 12

Description :
Ex-ed IIC Ammeter with Indicating Lamps



Type No. :
P GR C 12 22 09

Description :
Ex-ed IIC Rotary Switch

Weatherproof Range



Type No. :
PGRG series

Description :
Internal Layout of FRP Junction Boxes



Type No. :
PGRG series

Description :
Different Sizes of FRP Junction Boxes



Type No. :
JBSS series

Description :
Internal Layout of Stainless Steel Junction Boxes



Type No. :
JBSS series

Description :
Different Sizes of Stainless Steel Boxes



PRODUCTS SHOWCASE



Weatherproof Range



Type No. :
IJ 21 series

Description :
Internal Layout of WP Al.
Junction Box



Type No. :
IJ 21 series

Description :
Different sizes of Al. Junction
Boxes



Type No. :
WLC series

Description :
IP-65 Local Control Station



Type No. :
40031

Description :
IP-65 Non-Wellglass Fitting



Type No. :
LW 21202

Description :
IP-65, Integral Wellglass
Fitting



Type No. :
Smart-L

Description :
IP-65, 2X20W and 2X40W
Tube Light Fitting

Industrial Automations

PLC BASED CONTROL PANEL

Our company manufactures and supplies international standard PLC control panels which are made up using the high quality raw material as per customer specification and advance technology. These industrial PLC panels cater the various requirements of different industries for safe area as well as Hazardous area application. Our custom PLC panels are developed on various application basis according to clients preferred specifications and exact needs. Our Electrical PLC panels find applications in the following areas and verity:

- NON REDUNDANT TYPE PLC PANEL
- REDUNDANT TYPE PLC PANEL
- SIL-2 TYPE PLC PANEL
- SIL-3 TYPE PLC PANEL
- ALL KIND OF HMI & SCADA SOFTWARE DEVELOPMENT

Factory Acceptance Test for PLC Logic

- Analog Inputs : 2 wire : 4 – 20 mA, 12 nos.
- Analog Inputs : 4 wire : 4 – 20 mA, 4nos.
- RTD Pt 100 Inputs, 8 nos.
- Thermocouple Inputs
- Digital inputs and Outputs
- mV Source, 1 no.
- Duly Calibrated Instruments at Regular Intervals





Industrial Automations

MCMS Control Panel

AS PER REQUIREMENT MACHINE MONITORING CONTROL PANEL BASED ON BENTLY 1900 / BENTLY 3500 AND SHINKAWA SYSTEM INSTALATION IN CONTROL ROOM OR PURGE PANEL.

MAINLY FOR COMPRESSOR CONTROL AND MAIN LINE PUMP APPLICATION.



RELAY BASED INSTRUMENTATION PANEL

Which includes

- RELAY BASED LOGIC
- ALARM ANNUNCIATOR
- PROCESS INDICATOR
- CONTROLLER
- FLOW COMPUTER
- OTHER KIND OF DISPLAY.



PURGE PANEL

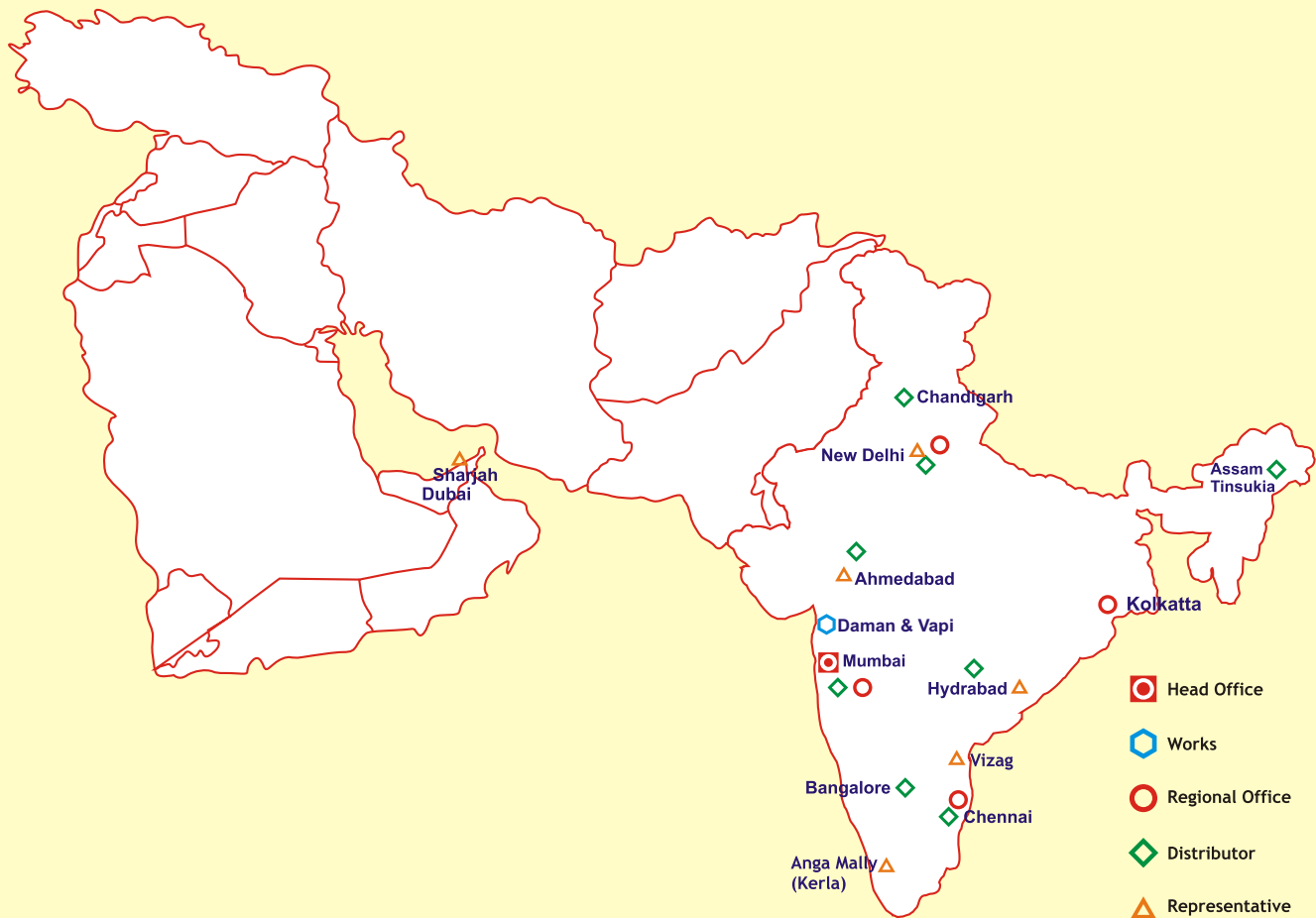
We are renowned manufacturers and exporters of a wide range of purge panels such as X purge panels, Y purge panels, Z purge panels for oil and gas industry as well as pharmaceutical reactions purge panels, purge panel for formulation and purge panel for field reaction. These purge panels are manufactured as per various industrial standards keeping in mind the client's requirements.

- TYPE - X PRUGE PANEL.
- TYPE - Y PRUGE PANEL.
- TYPE - Z PRUGE PANEL.



POWER PANEL

- STATOR PANEL FOR LOW HP MOTOR
- VFD BASED MOTOR STATOR PANEL
- LT / MCC PANEL FOR HEAVY MOTOR
- UTILITY POWER SUPPLY PANEL



FCG Hi-TECH PVT. LTD.

FCG Hi-TECH PVT. LTD.

Shree Pant Bhuwan, Mamasahab
Warerkar Bridge, Mumbai - 400 007
Tel. : 91-022-2363 1141, 2363 5878,
2362 1161, 6362 1162
Fax. : 91-022-2369 1141
E-mail : fcghitech@fcghitech.com

WORKS - 2 :

Plot No. 202, 2nd Phase, GIDC.
Vapi - 396 195 Gujarat
Tel. : 91-260-2400255 / 77
Fax. : 91-260-2400266
E-mail : fcghitech@fcghitech.com