



Coimbatore Aeration Accessories

Everything in Oil Hydraulics Since 1987

We are a One-stop shop for all your Hydraulic requirements.

We are in this field since the past 30 odd years and have a very strong, satisfied clientele of leading Corporate & Business houses in the field of Hydraulics.



Authorised Dealer

polyhydron
Pumps & Valves

DYNAMATIC
TECHNOLOGIES LIMITED
Gear Pumps

walvoil
HYDRAULIC CONTROL SYSTEMS
Mobile Valves

Huade
Pumps & Valves

HYLDC
Hydraulic Fittings & Valves

hydroline
PRODUCTS
Filters & Accessories

A+S HYDRAULIC
Hydro Motors & Steering Units

WIKAI
Measuring Instruments

DEMCON
Gear coupling & Gauge Isolators

OLAER
FARWELL CHRISTIE
Accumulators & Oil Coolers

MPFILTRI
Filters & Power Pack
Accessories

atos
Pumps & Valves

218, Rangakonar Street, Kattoor, Coimbatore - 641 00 9.

Ph: 0422 - 2235297, 2232867, 4397215

Mob: 81482 67660, 93631 03789

Email: caacbe@gmail.com

web: www.coimbatoreaeration.com





A Polyhydon Group Company

DOUBLE PILOT OPERATED CHECK VALVE Model : 2CI10T

Ref. No. D 52200 B
Release 11 / 2020

ENGINEERING - 1 of 1

Description

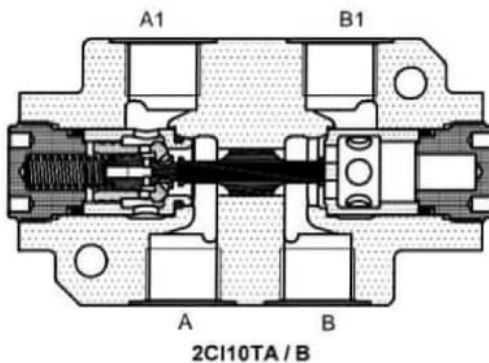
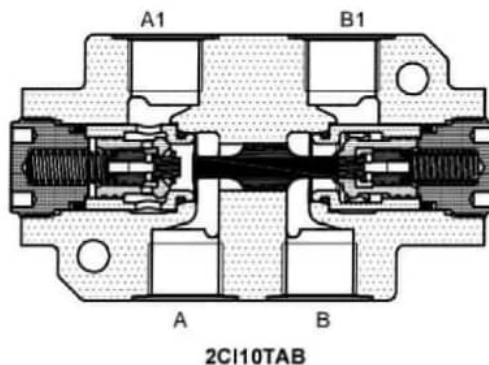
Double pilot operated check valves series 2CI10T** provide pressure holding facility on service ports A1 and B1.

The valve opens and allows free return flow, when the other working port is pressurized.

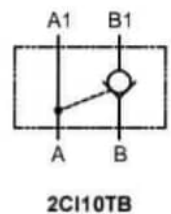
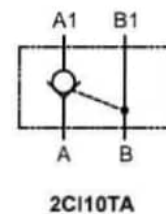
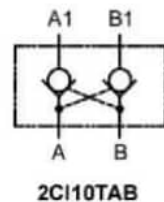
The valve is not suitable for holding pressure on rod end side of Double acting cylinders, where ratio (Bore area : Annulus area) is equal to or greater than 3.5.



Section



Hydraulic symbol



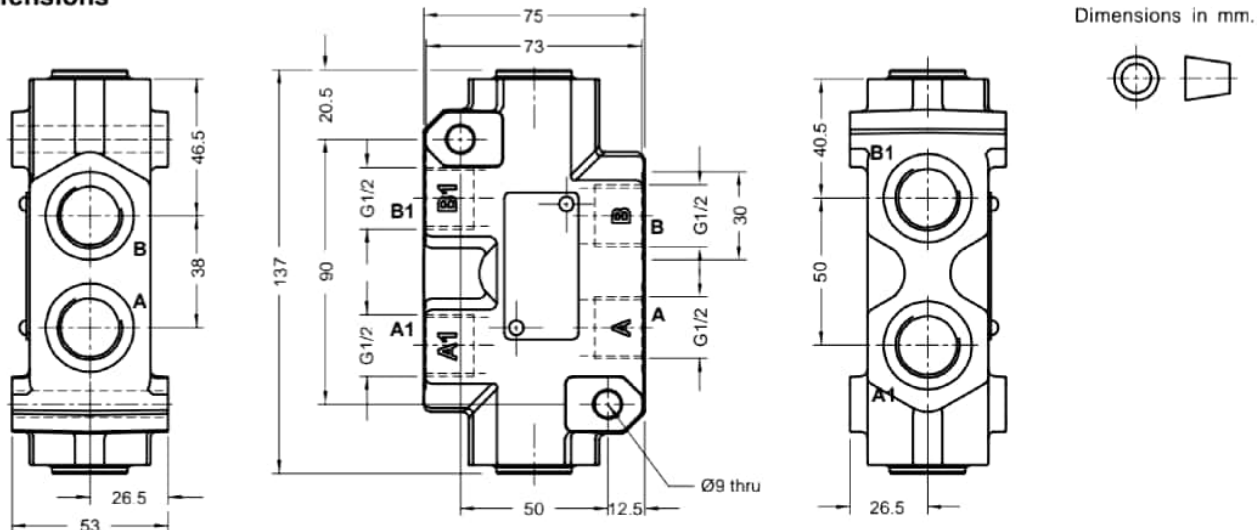
Technical specifications

Construction	:	Threaded, Seat type, Internally pilot operated.		
Mounting style	:	Factory standard.		
Mounting position	:	Optional.		
Flow direction	:	Free flow from A to A1 and / or from B to B1.		
	:	Piloted flow in opposite direction.		
Cracking pressure	:	1, 3 or 5 bar.		
Working pressure	:	315 bar for all Ports.		
Area ratios	:	Pilot piston : Decom. poppet = 3.5 : 1		
Hydraulic medium	:	Mineral oil.		
Temperature range	:	-20°C to + 80°C.		
Viscosity range	:	10 cSt to 380 cSt.		
Fluid cleanliness required	:	ISO 4406 20/18/15 or better.		
Max. flow handling capacity	:	80 l/min.		
Mass approx.	:	Model	2CI10TAB	2CI10TA/B
		in Kg.	2.1	2



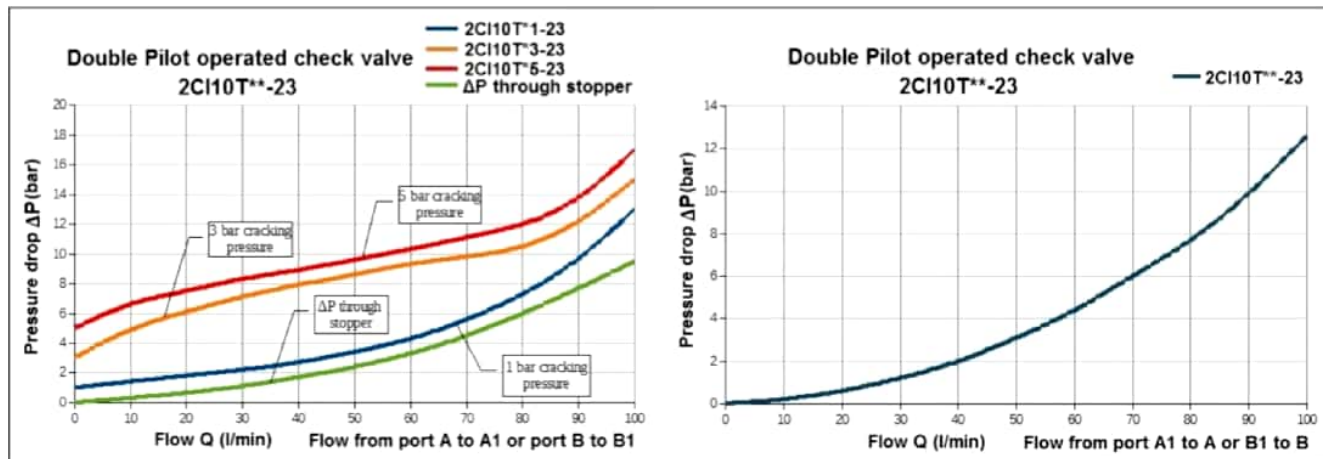


Unit dimensions

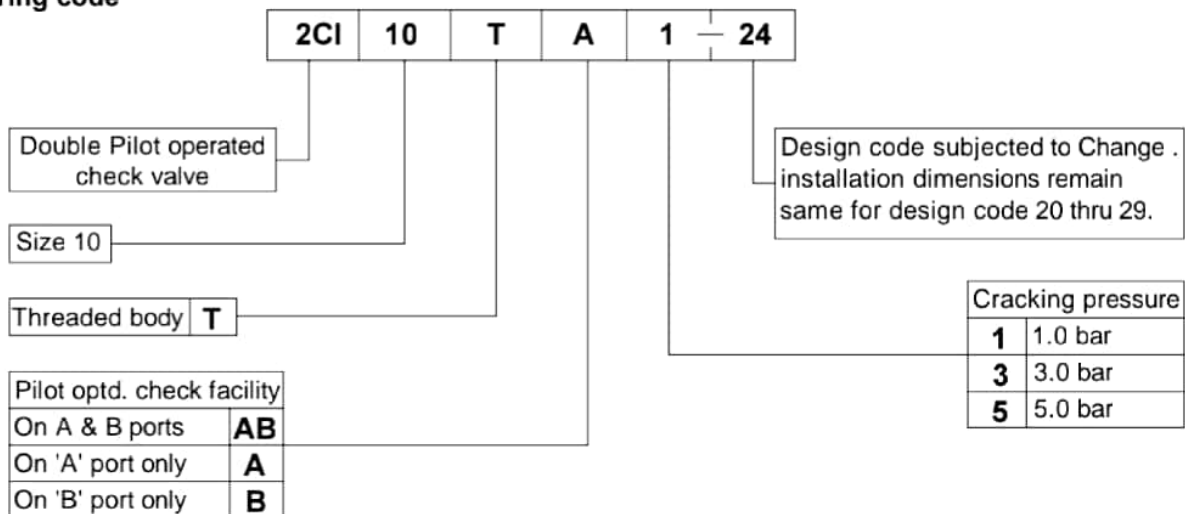


Note: Valve fixing S.H.C Screws are not in scope of supply.
Tightening torque for M8x1.25 S.H.C Screws is 39 Nm.

Performance graph



Ordering code



All rights reserved.
Subject to change without prior notice.
Due to continuous improvement in the design of the product, the actual product supplied may look different than shown above.
For critical applications, please ask for certified installation drawing.

All rights reserved.
Subject to revision

