



**AMEEN
ENTERPRISES**

Since 1985

**STURDY STRAPS
THAT DON'T SNAP**



Our Credentials



विदेश व्यापार महानिदेशालय
DIRECTORATE GENERAL OF
FOREIGN TRADE



MSME
MICRO, SMALL & MEDIUM ENTERPRISES
सूक्ष्म, लघु एवं मध्यम उद्यम



Content

About Us	03
Mission & Vision	04
Cord Strap	05
Wire Buckle	06
Tensioner	07
Edge Corner Protector	07
Case Study	08
Overseas	09

CORD STRAP

The packaging industry has travelled a long distance from the days of steel banding. Throughout these years, we made leaps in rayon, polyester, PP strap, and PET strap. But now, we have a solution that beats them all. The Composite Cord Strap is the finest cargo packaging solution of the 21st century.

In order to combine strength, shock absorption, abrasion resistance, and high joint efficiency into a single user-friendly product, uses cutting-edge co-extrusion technologies.

It is made of high-tenacity polyester filament yarn which has been extruded with Photo thermal polymer, and thanks to our superior production line, we are capable of producing soft, flexible straps with significant strength. maintains a firm grip on weights and is capable of absorbing shocks and load shifting that would typically shatter steel banding or harm priceless goods. It is simple to handle and discard because it is light, flexible, and avoid of sharp edges. A high joint a straightforward, and affordable tool are used to fasten. Especially made for project-related and one-way shipment. Implementing various Webbing, Buckle, and Hook combinations.

PRODUCT CODE	WIDTH [mm]	COIL LENGTH [m]	LINEAR STRENGTH		SYSTEM STRENGTH		METER / BOX
			Kg.	Lbs.	Kg.	Lbs.	
AZR-13	13	1000	320	705	506	1115	2000
AZR-16	16	850	425	936	672	1481	1700
AZR-19	19	600	475	1047	751	1655	1200
AZR-25	25	500	720	1587	1203	2652	1000
AZH-25	25	500	860	1896	1375	3030	1000
AZE-32	32	300	1025	2259	1712	3775	600
AZR-32	32	300	1230	2712	2054	4528	600

NOTE :

- ❖ The length and strength of Composite Straps can be customized. ❖ In one box there are 2 coils.
- ❖ Maximum strength variation is (+/-) 5%. ❖ Box dimension (in mm): 380 x 380 x 400

Cord strap Features:

High tensile strength, High system strength, Rust Proof, Shock-resistant
Non-abrasive, No sharp edges, Chemical resistant, Highly flexible and elastic
Cost effective, UV resistant and weather Resistant.

Cord Strap Application:

Steel tube and Pipe Packaging, Machinery Packaging, Lumbar Packaging
Chemical Packaging, Pallet Packing, Stone Packaging, Bundling
Scaffolding Packaging, Tyre Packaging, Glass Packaging Automobile
Industries, Steels and Metals.



Cord Strap

WIRE BUCKLE

Straps and lashes are secured in place with wire buckles. They help in locking the composite strap's ends and in tightening the pressure. Wire buckles elevate the capacity of composite straps by 1.6-1.7 times.

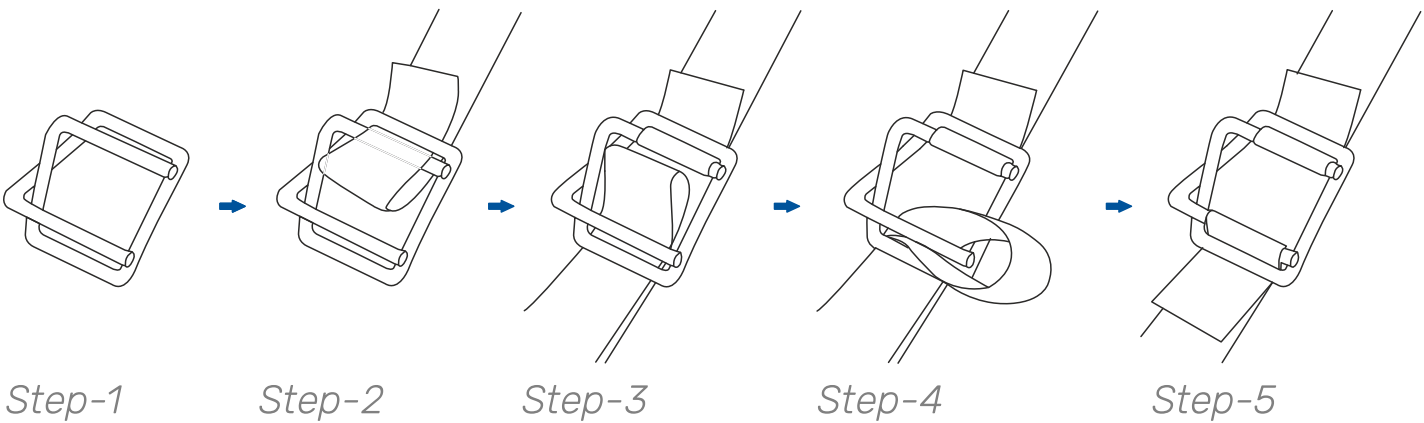
wire buckles are made from top quality steel. They offer an easy and unwavering sealing method. Our buckles come in industry standard shapes for maintaining highest tensile strength. Solidify your cargo with the most reliable buckle in the market. We manufacture Galvanized Buckle for package straps made from the best steel wire available. These buckles are manufactured with strong process controls, resulting in buckles that are incredibly strong, reliable, consistent, and simple to thread. These buckles can be tightened individually or by using a tensioning tool.



Wire Buckle

PRODUCT CODE	STRAP SIZE [mm]	WIRE DIA. [mm]	QUANTITY / BAG
AZB-13	13	3.3	1000
AZB-16	16	3.5	1000
AZB-19	19	4	1000
AZB-25	25	5	500
AZB-32	32	7	250

GUIDANCE OF STRAPING WITH BUCKLE



TENSIONER

Tensioners are necessary while securing the cargo in order to tighten straps with buckles.

General Properties of Manual Tensioner

- It makes it possible to apply stress in a simple and convenient manner.
- It has an extremely minimal upfront cost.
- It is constructed of high-quality steel.
- Compared to automatic tools, it has less wear-and-tear troubles.
- It can be moved easily from one location to another.
- Long Life Span.



Tensioner

EDGES CORNER PROTECTOR

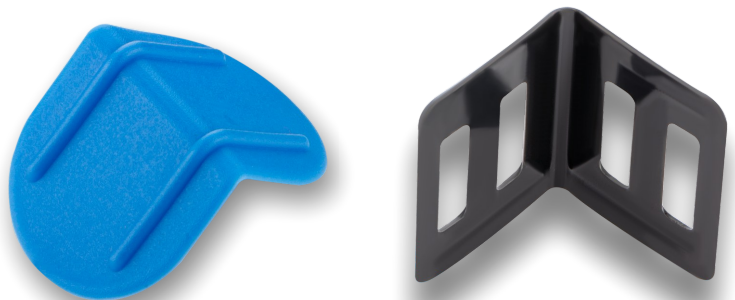
Edge Corner is specifically made to prevent the edges of boxes and pellets from bending.

Size : 34 mm

Width : 52 mm

Wall Thickness : 2 mm

Packing: 5000 Pieces/box.



Edges Corner Protector

APPLICATIONS



OVERSEAS



CONTACT US

MOB-8618005856/9448785596