



# AS INFRA

ENGINEERS AND CONTRACTORS

— STRONG FOUNDATIONS, BRIGHT SOLUTIONS —

## BUILT TO LIGHT. DESIGNED TO LAST.

Premium quality light pole solutions engineered for performance, durability and a brighter tomorrow.



PREMIUM  
QUALITY



INNOVATIVE  
DESIGN



RELIABLE  
PERFORMANCE



CUSTOMER  
COMMITMENT



STREET LIGHTING

PORTS & INDUSTRIAL AREAS

SPORTS COMPLEXES

FUEL STATIONS &  
COMMERCIAL SPACES



CALL US TODAY  
**9076481515**



EMAIL US  
[asinfra3173@gmail.com](mailto:asinfra3173@gmail.com)



VISIT OUR WEBSITE  
[www.asinfralightpoles.com](http://www.asinfralightpoles.com)



# AS INFRA

ENGINEERS AND CONTRACTORS

STRONG FOUNDATIONS, BRIGHT SOLUTIONS

## BUILT TO LIGHT. DESIGNED TO LAST.

AS Infra Engineers and Contractors is a leading manufacturer and supplier of high quality lighting poles and infrastructure solutions.

We deliver strength, durability and performance in every project.



### QUALITY FIRST

We use premium quality raw materials and advanced technology to deliver products that stand the test of time.



### INNOVATIVE SOLUTIONS

Modern design, precise engineering and customized solutions for every lighting and infrastructure requirement.



### RELIABLE PARTNER

From design to installation, we ensure timely delivery, professional service and complete customer satisfaction.



### BUILT FOR TOMORROW

Corrosion resistant, weatherproof and maintenance friendly poles crafted for a better and brighter future.



## TYPES OF LIGHT POLES

- 01 | HEXAGONAL POLE
- 02 | CONICAL POLE
- 03 | OCTAGONAL POLE
- 04 | TUBULAR POLE
- 05 | PETROL PUMP POLE
- 06 | CASTING POLE
- 07 | TRAFFIC SIGNAL POLE
- 08 | SIGNAGE MAST POLE
- 09 | LADDER TYPE POLE
- 10 | CCTV POLE
- 11 | ADVERTISING POLE
- 12 | SOLAR LIGHT POLE
- 13 | FLAG DOME
- 14 | FLAG POLE
- 15 | DECORATIVE POLE
- 16 | HIGHMAST
- 17 | STADIUM HIGH MAST



CALL US TODAY  
**9076481515**



EMAIL US  
[asinfra3173@gmail.com](mailto:asinfra3173@gmail.com)



VISIT OUR WEBSITE  
[www.asinfralightpoles.com](http://www.asinfralightpoles.com)



**AS INFRA**  
ENGINEERS AND CONTRACTORS  
STRONG FOUNDATIONS, BRIGHT SOLUTIONS

# PRODUCT



High mast lighting as a concept in area lighting is being preferred over conventional lighting, especially where large areas are to be illuminated without the need for numerous lighting columns that, under certain circumstances, can be a hazard to movement. This is possible because the high mast lighting system achieves very large space to height ratios.

High-mast lighting is ideal for many areas, particularly complicated or multi-level road systems, industrial or commercial areas, docks, airports, stations, car parks and even some hazardous areas. All of these areas require the best possible lighting with minimum interference from the installation itself combined with ease of maintenance.



## KEY HIGHLIGHTS



### ENGINEERED STRUCTURE

Our highmast is a continuously tapered, polygonal cross section of at least 20 sides, presenting a good and pleasing appearance which is based on proven in tension design conforming to the Technical report no.7-1986 of the Institution of Lighting Engineers, UK, to give an assured performance and reliable service. The structure is suitable for loading as per IS 875 (part 3) 1987.



### BUILT TO PERFECTION

High mast is fabricated from steel plates conforming to BS-EN 10025, cut and folded to form a polygonal section. Masts are in two sections for 16 & 20 Mtr and in three sections for 25 & 30 Mtr heights having only longitudinal weld conforming to BS 5135/AWS. The mast is provided with a fully penetrated flange which is free from any laminations or incursions. The welded connection of the base flange is fully developed to the strength of the entire section. The base flange is provided with supplementary gussets between bolt holes to ensure elimination of helical stress concentration. For environmental protection of the mast, the entire fabricated mast is Hot Dip Galvanized (Single Dip) internally and externally, having uniform coating thickness of 85/65 microns for bottom/top sections respectively.



### SERVICE OPENING

An adequate door opening is provided at the base of the mast. The opening is such that it permits clear access to equipments like winch, cable, wire rope, plug & socket etc. and also facilitates easy removal of the winch for servicing. The door opening is complete with a close fitting vandal resistant allen key locking with provision for external lock. The door opening is carefully designed and reinforced with adequate steel section so that the mast section at the base is unaffected, and undue buckling of the cut portion is prevented under heavy wind condition.



### DESIGNED FOR WIND SAFETY

Our mast structure is designed to sustain an assumed maximum reaction arising from wind speed as per IS 875 (Part 3) 1987 (three seconds) which is measured at a height of 10 mtrs above ground level. Our standard masts are suitable for a wind speed of 180 Km/Hour (50M/Sec) we can also offer masts suitable for a wind speed of 225 Km/hr (62.5 M/sec).



## LET'S CONNECT

- +91 9076481515
- asinfra3173@gmail.com
- www.asinfralightpoles.com
- GST No. 27BYSR5572H1ZL



**STRONG & DURABLE**



**HOT DIP GALVANIZED**



**RELIABLE PERFORMANCE**



**LOW MAINTENANCE HIGH EFFICIENCY**

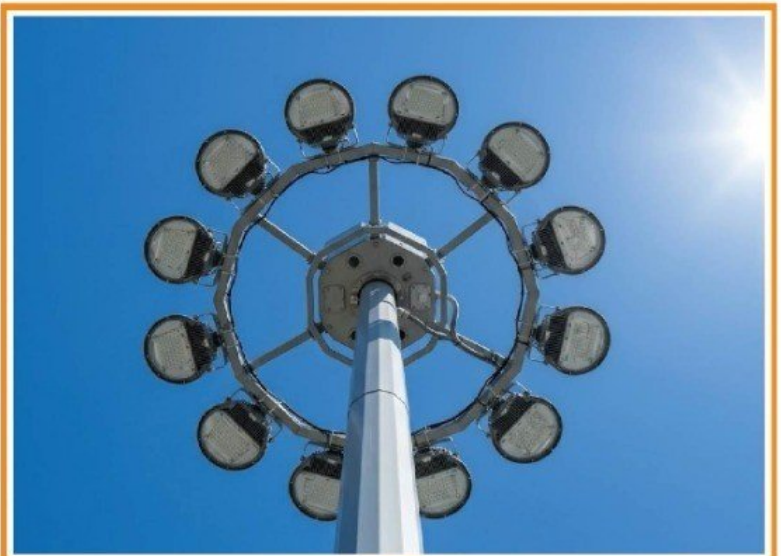
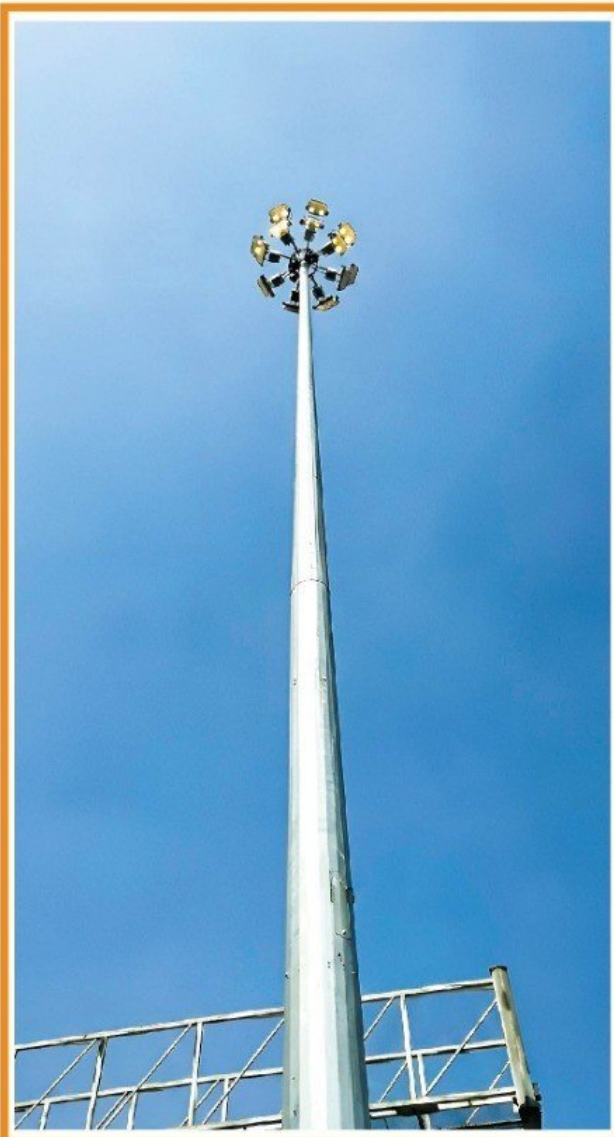
# HIGH MAST POLES

## “Powerful Illumination for Large Spaces”

A S Infra Engineers & Contractors offers high-performance high mast lighting solutions designed for efficient illumination of large outdoor areas. These poles are ideal for applications such as highways, stadiums, airports, ports, industrial zones, and large parking areas, where uniform and high-intensity lighting is required.

Engineered using high tensile steel and manufactured as per relevant IS Standards, our high mast poles ensure superior strength, stability, and long service life. The system is equipped with a motorized lowering and raising mechanism, allowing easy maintenance of luminaires at ground level. Finished with hot dip galvanization, the poles provide excellent corrosion resistance and durability even in harsh environmental conditions.

We offer high mast poles ranging from 12 meters to 45 meters and above, with complete customization options including head frame, number of luminaires, winch system, and accessories as per project requirements.



# AS INFRA

## ENGINEERS AND CONTRACTORS

— STRONG FOUNDATIONS, BRIGHT SOLUTIONS —

## HIGH MAST LIGHTING SOLUTIONS ///

High mast lighting as a concept in area lighting is being preferred over conventional lighting, especially where large areas are to be illuminated without the need for numerous lighting columns that, under certain circumstances, can be a hazard to movement. This is possible because the high mast lighting system achieves very large space to height ratios.

High-mast lighting is ideal for many areas, particularly complicated or multi-level road systems, industrial or commercial areas, docks, airports, stations, car parks and even some hazardous areas. All of these areas require the best possible lighting with minimum interference from the installation itself combined with ease of maintenance.

Manufactured as per IS Standards and finished with hot dip galvanization, these poles provide superior corrosion resistance and long service life. Available from 3 meters onwards, our conical poles can be fully customized to meet specific project requirements and site conditions.

# HIGH MAST POLE

ENGINEERED FOR STRENGTH.  
BUILT FOR PERFORMANCE.

Code	Height (m)	Bottom (mm)	Top (mm)	Sheet Thickness (mm)			Base Plate-PCD (mm)	Foundation Bolts			Luminary Capacity
				T	M	B		Dia	Length	Qty.	
SLP12	12	360	150	3	3	3	520x20-445	M24*700X6			4, 6, 8
SLP12	12	260	105	3	3	3	520x20-445	M24*700X6			4, 6, 8
SLP12	12	310	105	3	3	3	445x20-380	M24*700X6			4, 6, 8
SLP12	12	360	150	3	3	3	520x20-445	M24*700X6			4, 6, 8
SLP12.5	12.5	360	150	3	3	3	520x25-445	M24*700X6			4, 6, 8
SLP12.5	12.5	360	150	3	3	3	520x25-445	M24*700X6			4, 6, 8
SLP16	16	360	150	3	3	3	520x25-445	M24*700X6			4, 6, 8
SLP16	16	410	150	3	3	3	520x25-445	M30*850X8			4, 6, 8, 10
SLP16	16	410	150	3	3	3	630x25-630	M30*850X8			4, 6, 8, 10
SLP20	20	460	150	3	3	4	670x25-580	M30*850X8			4, 6, 8, 11
SLP20	20	460	150	3	3	4	630x30-580	M30*850X8			6, 8, 10, 12
SLP20	20	460	150	3	4	5	670x30-580	M30*850X8			6, 8, 10, 12
SLP25	25	460	150	3	4	5	670x30-580	M30*850X8			6, 8, 10, 12
SLP25	25	540	150	3	4	5	730x30-650	M30*1000X12			6, 8, 10, 12
SLP25	25	540	150	4	4	5	730x30-650	M30*1000X12			6, 8, 10, 12
SLP30	30	540	150	4	4	5	750x30-650	M30*1000X12			8, 10, 12, 16
SLP30	30	540	150	4	4	5	750x30-650	M30*1000X12			8, 10, 12, 16
SLP30	30	610	200	4	4	5	840x30-740	M30*1000X12			8, 10, 12, 16, 20
SLP30	30	610	200	4	4	5	840x30-740	M30*1000X12			8, 10, 12, 16, 20, 24
SLP40	40	740	200	4	5-6	6	950x40-850	M30*1000X16			10, 12, 16, 20, 24



### GET IN TOUCH

- +91 9076481515
- asinfra3173@gmail.com
- www.asinfralightpoles.com
- GST No. 27BYSR5572H1ZL

### WHY CHOOSE AS INFRA HIGH MAST POLES?



STRONG & DURABLE



HOT DIP GALVANIZED



RELIABLE PERFORMANCE



LOW MAINTENANCE



CORROSION RESISTANT



LONG SERVICE LIFE



# AS INFRA

## ENGINEERS AND CONTRACTORS

◀ STRONG FOUNDATIONS, BRIGHT SOLUTIONS ▶

# CONICAL POLES

AS Infra Engineers & Contractors offers a durable and versatile range of conical poles designed for applications such as street lighting, power distribution, solar systems, enveillance, and smart pole solutions. The tapered design ensures high strength, uniform load distribution, and excellent wind resistance, making them suitable for both urban and highway use.

Manufactured as per IS Standards and finished with hot dip galvanization, these poles provide superior corrosion resistance and long service life. Available from 3 meters onwards, our conical poles can be fully customized to meet specific project requirements and site conditions.



Product Code.	Height Mtr.	Top A/F(mm)	Bottom A/F(mm)	Thickness (mm)	Base Plate			Foundation Bolt
					Size	Thick.	PCD	
SLP3	3	65	110	3	200X200	12	200	M16 X 400 mm
SLP3	3	70	115	3	200X200	12	200	M16 X 400 mm
SLP4	4	65	125	3	200X200	12	200	M16 X 400 mm
SLP4	4	70	130	3	200X200	12	200	M16 X 400 mm
SLP5	5	65	140	3	225X225	12	225	M16 X 500 mm
SLP5	5	70	145	3	225X225	12	225	M16 X 500 mm
SLP6	6	65	155	3	250X250	12	250	M16 X 500 mm
SLP6	6	70	160	3	250X250	12	250	M16 X 500 mm
SLP7	7	65	170	3	250X250	16	250	M16 X 500 mm
SLP7	7	70	175	3	250X250	16	250	M16 X 500 mm
SLP8	8	65	185	3	275X275	16	275	M20 X 600 mm
SLP8	8	70	190	3	275X275	16	275	M20 X 600 mm
SLP9	9	65	200	3	300X300	20	300	M24 X 600 mm
SLP9	9	70	205	3	300X300	20	300	M24 X 600 mm
SLP10	10	70	220	3	320X320	20	320	M24 X 750 mm
SLP10	10	80	230	3	320X320	20	320	M24 X 750 mm
SLP11	11	70	235	3	320X320	20	320	M24 X 750 mm
SLP12	12	70	250	3	350X350	20	350	M24 X 750 mm



Contact No.  
**9076481515**



GST No.  
27BYSR5572H1ZL



Website  
[www.asinfraflightpoles.com](http://www.asinfraflightpoles.com)



Email ID  
asinfra3173@gmail.com



**AS INFRA**  
ENGINEERS AND CONTRACTORS  
— STRONG FOUNDATIONS, BRIGHT SOLUTIONS —

# OCTAGONAL POLE

ENGINEERED FOR STRENGTH.  
BUILT FOR **PERFORMANCE.**

High quality octagonal poles designed for reliability, durability and superior performance in all types of outdoor lighting applications.



## APPLICATIONS



Infrastructure Lighting



Communities & Residential Developments



Highways & Internal Roads



Sports Ground

## TECHNICAL FEATURES



**POLE SHAFT**  
Conforms to IS:5986  
Shaft can be of one or two pieces.



**SERVICE DOOR**  
Covered reinforced hand-hole supplied as per size of the lighting pole.



**ANCHOR BASE**  
Structural quality.  
Conforms to IS: 5986.



**HARDWARE**  
All structural fasteners are galvanized high strength carbon steel.  
Other fasteners are galvanized, zinc plated or stainless steel.



**ANCHOR BOLT**  
Carbon Steel of Grade 8.8.  
L shaped & galvanized as per IS: 2629.  
Each pole includes 4 bolts with 2 nut & 2 washers.



**STANDARD FINISH**  
Hot Dip Galvanized as per IS: 2629



OCTAGONAL POLE

## TECHNICAL SPECIFICATIONS

Product Code	Pole Height	Material Construction	Metal Protection Treatment	Avg. Thickness of Galvanization	Thickness of Sheet	Thickness of Base Plate	Bottom Diameter	Top Diameter	Size of Base Plate	PCD of Foundation Bolt	Bolt Diameter	Bracket
IOP4	4 Mtrs	Bs En 10025	Galvanized	86 Microns	3 mm	12 mm	130 mm	70 mm	200x200 mm	200 mm	16 mm	Single & Double Arm
IOP5	5 Mtrs	Bs En 10025	Galvanized	86 Microns	3 mm	12 mm	130 mm	70 mm	200x200 mm	200 mm	16 mm	Single & Double Arm
IOP6	6 Mtrs	Bs En 10025	Galvanized	86 Microns	3 mm	12 mm	130 mm	70 mm	200x200 mm	200 mm	16 mm	Single & Double Arm
IOP7	7 Mtrs	Bs En 10025	Galvanized	86 Microns	3 mm	12 mm	135 mm	70 mm	200x200 mm	200 mm	20 mm	Single & Double Arm
IOP8	8 Mtrs	Bs En 10025	Galvanized	86 Microns	3 mm	12 mm	135 mm	70 mm	200x200 mm	200 mm	20 mm	Single & Double Arm
IOP9/155	9 Mtrs	Bs En 10025	Galvanized	86 Microns	3 mm	16 mm	155 mm	70 mm	250x250 mm	260 mm	20 mm	Single & Double Arm
IOP9/175	9 Mtrs	Bs En 10025	Galvanized	86 Microns	3 mm	16 mm	175 mm	70 mm	275x275 mm	275 mm	25 mm	Single & Double Arm
IOP9/210	9 Mtrs	Bs En 10025	Galvanized	86 Microns	3 mm	16 mm	210 mm	90 mm	300x300 mm	300 mm	25 mm	Single & Double Arm
IOP10	10 Mtrs	Bs En 10025	Galvanized	86 Microns	3 mm	20 mm	210 mm	90 mm	300x300 mm	300 mm	25 mm	Single & Double Arm
IOP11	11 Mtrs	Bs En 10025	Galvanized	86 Microns	3 mm	20 mm	210 mm	90 mm	300x300 mm	300 mm	25 mm	Single & Double Arm
IOP12	12 Mtrs	Bs En 10025	Galvanized	86 Microns	3 mm	20 mm	210 mm	90 mm	300x300 mm	300 mm	25 mm	Single & Double Arm

**NOTE :** Above all sizes are standard, Tailor-made size can be manufactured



9076481515  
CONTACT NO.



asinfra3173@gmail.com  
EMAIL ID



www.asinfralightpoles.com  
WEBSITE



27BYSR5572H1ZL  
GST NO.



# AS INFRA

## ENGINEERS AND CONTRACTORS

— STRONG FOUNDATIONS, BRIGHT SOLUTIONS —

# DECORATIVE POLES

ELEGANCE THAT LIGHTS EVERY SPACE

Our decorative poles are designed to enhance the beauty of urban spaces with unmatched style, strength and durability. Perfectly crafted for streets, parks, commercial areas and public spaces.



### PREMIUM QUALITY MATERIAL

Manufactured using high grade steel, seamless tubes and advanced CNC technology for accurate forms, sizes and long life.



### CORROSION RESISTANT

Hot Dip Galvanized for superior corrosion resistance and durability in all weather conditions.



### SUPERIOR FINISH

Finished with PU paint or powder coating in wide range of colors for aesthetic and long-lasting appeal.



### BUILT TO LAST

Engineered to withstand harsh environments with minimal maintenance.



CLASSIC DESIGN

DURABLE & STYLISH

3 ARM DECORATIVE POLE

## KEY FEATURES



### STURDY CONSTRUCTION

Built with high grade steel for maximum strength and stability.



### ACCURATE DIMENSIONS

Precision engineered for perfect fit and finish.



### PREMIUM FINISH

PU painted or powder coated in various colors.



### CUSTOM DESIGNS

Available in various styles, shapes and sizes as per need.



### WIDE APPLICATION

Ideal for streets, parks, commercial areas and public spaces.

## IDEAL FOR



STREETS



PARKS



WALKWAYS



COMMERCIAL COMPLEXES



TOWNSHIPS



HERITAGE PROJECTS



PUBLIC SPACES



## BUILT TO LIGHT. DESIGNED TO LAST.

AS INFRA delivers decorative poles that combine strength, style and sophistication to transform every space with brilliance.



CONTACT US

# 9076481515



9076481515  
CONTACT NO.



asinfra3173@gmail.com  
EMAIL ID



www.asinfralightpoles.com  
WEB SITE



27BYSPR5572H1ZL  
GST NO.



# AS INFRA

ENGINEERS AND CONTRACTORS

— STRONG FOUNDATIONS, BRIGHT SOLUTIONS —

# FLAG MAST POLE

BUILT TALL. BUILT STRONG. BUILT TO INSPIRE.

## ABOUT OUR FLAG MAST POLES

We manufacture premium quality Flag Mast Poles using high grade steel and advanced technology. Our poles are designed for maximum strength, durability and weather resistance, ideal for government buildings, institutions, commercial spaces, industrial areas, parks and public places.

## FEATURES



### STRONG & DURABLE

High grade steel construction for long lasting performance.



### ACCURATE DIMENSIONS

Precision engineered for perfect fit and strength.



### CORROSION RESISTANT

Hot dip galvanized finish for superior protection.



### EASY INSTALLATION

Designed for quick and hassle-free installation.



### WIDE APPLICATION

Suitable for all kinds of outdoor and public projects.

## TECHNICAL SPECIFICATIONS

Code	Height (Mtr.)	Bottom A/F (mm)	Top (mm)	Sheet Thickness (mm)			Base Plate-PCD (mm)	Foundation Bolts		
				T	M	B		Dia (mm)	Length (mm)	Qty.
SLP18	18	460	150	3	3	4	670x30-580	M30*850X8	8	8
SLP20	20	460	150	3	3	4	670x30-580	M30*850X8	8	8
SLP25	25	540	150	3	4	5	730X30-650	M30*1000X12	12	12
SLP30	30	540	200	3	4	5	750X30-650	M30*1000X12	12	12
SLP35	35	610	150	3	4-5	6	850X30-750	M30*1000X16	16	16
SLP40	40	740	200	4	5-6	8	950x40-850	M30*1000X16	16	16

NOTE : Above all sizes are standard, Tailor-made size can be manufactured



9076481515  
CONTACT NO.



asinfra3173@gmail.com  
EMAIL ID



www.asinfralightpoles.com  
WEB SITE



27BYSR5572H1ZL  
GST NO.





# AS INFRA

ENGINEERS AND CONTRACTORS

STRONG FOUNDATIONS, BRIGHT SOLUTIONS

# CCTV POLE

CCTV poles with fixed head frame for camera mounting are usually used for location where high concentration of cameras is required over a small area.



## 1 MATERIAL & FINISHES



- **Mild Steel (MS) & Galvanized Iron (GI):**  
Ideal for heavy-duty support and high-wind zones.



- **Hot-Dip Galvanization:**  
Zinc-coated for maximum anti-rust and corrosion resistance.



- **Aluminum:**  
Lightweight alternative for easy installation and excellent natural corrosion resistance.

## 2 STANDARD SPECIFICATIONS

Pole Type	Standard Height	Typical Load Capacity	Key Features
Straight Tubular	3m to 6m	1-2 Dome/Bullet cameras	Cost-effective, surface or flush mount.
Swaged/Octagonal	5m to 12m	Multiple PTZ & Bullet cams	High wind resistance, used on highways.
Tilt-Down/Hinged	6m to 10m	Heavy loads / Radars	Allows camera maintenance without lane closures.

## 3 MOUNTING ACCESSORIES



- **Camera Brackets:**  
Universal J-mounts, L-shaped, and adapter plates for Dome and Bullet cameras.



- **Junction / Power Boxes:**  
Weatherproof enclosures (IP65/IP66) for routing cables and housing power supplies.



- **Foundation Hardware:**  
Pre-welded base plates with Anchor Bolts (J-bolts) for concrete footing installation.



# AS INFRA

## ENGINEERS AND CONTRACTORS

— STRONG FOUNDATIONS, BRIGHT SOLUTIONS —

# SOLAR HIGH MAST

SMART LIGHTING. SUSTAINABLE FUTURE.

**AS INFRA** Solar High Mast is a high performance, solar-powered lighting solution designed for modern infrastructure needs. Built for durability and efficiency, it ensures reliable illumination in traffic junctions, highways, car parks, industrial areas and public spaces.

### KEY FEATURES



#### SOLAR POWERED

Harnesses clean solar energy for cost-effective and eco-friendly lighting.



#### WEATHER PROOF DESIGN

Engineered with robust, weather-proof construction for long-lasting performance.



#### HIGH EFFICIENCY SYSTEM

Equipped with efficient solar panels, battery, and charge controller for consistent performance.



#### FLEXIBLE OPERATION

Available with manually operated winch or electro-mechanically motorized winch options.



#### CUSTOMIZATION AVAILABLE

Standard designs with the flexibility to meet specific project requirements.



### APPLICATIONS



TRAFFIC JUNCTIONS



CAR PARKS



AREA LIGHTING



INDUSTRIAL AREAS



URBAN INFRASTRUCTURE



CALL US

**9076481515**



GST NO.

**27BYSR5572H1ZL**



VISIT OUR WEBSITE

[www.asinfralightpoles.com](http://www.asinfralightpoles.com)



EMAIL ID : [asinfra3173@gmail.com](mailto:asinfra3173@gmail.com)



# AS INFR

## ENGINEERS AND CONTRACTORS

← STRONG FOUNDATIONS, BRIGHT SOLUTIONS →

# STADIUM MAST POLE

Stadium masts with fixed head frame for floodlights mounting are usually used for location where high concentration of luminaries is required over a small area.

### TECHNICAL SPECIFICATION:

- 20 sided polygonal continuously tapered cross section
- Headframe at the top shaft will be tilted 10 degrees for floodlight aiming
- Fixed platform and service ladder at the top of the shaft for maintenance purpose
- Maintenance Cage lifts by hoist unit complete with safety brake to reach the fixed platform
- Conforms to Standard: Pole design: ILE TR7/CP3 Material: BS EN 10025 S355/JIS G3101 SS440 Welding: BS 5135, Galvanizing: BS 729/ISO 1461

### OPTION:

- Height from 30m to 45m
- Customized Frame design to suit the number of the floodlights specified by customer

### APPLICATION:

Stadium | Sports Centre

Sports Lighting System are required for illuminating stadiums or playgrounds with tall lighting poles which rest on a platform and have a ladder. AS INFR manufactures Sports Mast Poles according to customer specification and requirements. Our plant is equipped with modern CNC machines which ensure perfect product dimensions that match customer specifications

### SPORTS MAST POLES FIND APPLICATION AT THE FOLLOWING PLACES:

Stadiums | Golf courses | Sports Centre and Clubs | University and School playgrounds



## STADIUM MAST POLE SPECIFICATIONS

Code	Height	Bottom A/F	Top	Sheet Thickness			Base Plate-PCD	Foundation Bolts			Luminary Capacity
				T	M	B		Dia	Length	Qty.	
SLP15	15	460	150	3	3	3	670X25-580	M30*850X8			12, 24
SLP16	16	460	150	3	3	4	670X25-580	M30*850X8			12, 24
SLP20	20	460	150	3	4	4	670X30-580	M30*850X8			12, 24
SLP25	25	540	150	3	4-4	5	750X30-650	M30*1000X12			12, 24, 48
SLP25	25	610	200	4	4-5	6	830X30-730	M30*1000X12			24, 48
SLP30	30	540	150	4	4-5	6	820X30-680	M30*1000X12			24, 48
SLP30	30	610	200	4	5-6	6	830X40-730	M30*1000X16			24, 48

NOTE : Above all sizes are standard, Tailor-made size can be manufactured



CALL US  
9076481515



GST NO.  
27BYSR5572H1ZL



VISIT OUR WEBSITE  
www.asinfralightpoles.com



EMAIL ID : asinfra3173@gmail.com



# AS INFR

## ENGINEERS AND CONTRACTORS

— STRONG FOUNDATIONS, BRIGHT SOLUTIONS —

### SIGNAGE MAST POLE

Signage Mast System are required for identification of utility premises. This can be with or withoutlights or retro reflective sheets. AS INFR manufactures Signage Mast Pole that range from 16 m to 40 m long. AS INFR Plant is equipped with the latest and modern CNC machines which ensure perfect product dimension that match customer specification



### Signage Mast Pole Are Used At The Following Place:

- Petrol pump | Petrol refineries |
- Gas filling station for automobile | Power substations

SIGNAGE MAST POLE		
Sr. No.	SPECIFICATION	DETAILS
1	Height	Ranges From 6 To 100 Feet
2	Material Thickness	Generally It Is In Between 0.5-5 mm
3	Finish	Powder Coated, Anodized, Or Galvanized
4	Mounting Options	Concrete, Asphalt, Or Soil
5	Sign Attachment	Clips, Brackets, Or Adhesive

NOTE : Above all sizes are standard, Tailor-made size can be manufactured

CALL US  
**9076481515**

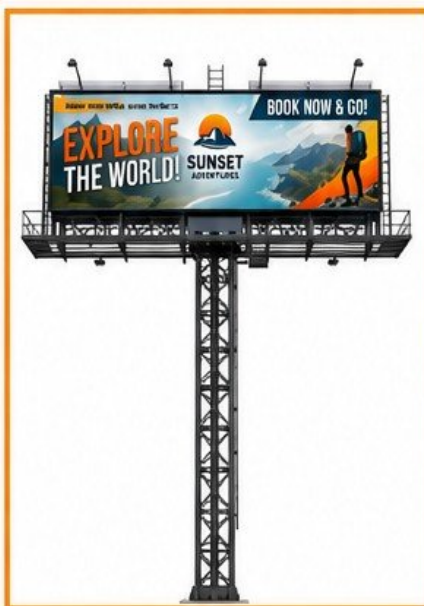
GST NO.  
**27BYSPR5572H1ZL**

VISIT OUR WEBSITE  
[www.asinfralightpoles.com](http://www.asinfralightpoles.com)

EMAIL ID : [asinfra3173@gmail.com](mailto:asinfra3173@gmail.com)

# Heavy-Duty Steel Frames for High-Impact Outdoor Advertising

- ▶ Our outdoor road hoarding steel frames are engineered for durability, strength, and long-term performance in all weather conditions. Fabricated using high-quality mild steel, these structures provide a sturdy base for advertising displays along highways, city roads, and commercial zones.
- ▶ Designed with precision, the frames ensure excellent wind resistance and structural stability, making them ideal for large-format hoardings and billboards. The anti-corrosion coating and robust fabrication guarantee minimal maintenance and extended service life.
- ▶ Suitable for both fixed and customized sizes, our steel hoarding frames are easy to install and support various media types such as flex, LED panels, and backlit displays—making them a reliable solution for outdoor advertising infrastructure.





# AS INFRA

ENGINEERS AND CONTRACTORS

— STRONG FOUNDATIONS, BRIGHT SOLUTIONS —



## Get In Touch

+91 90764 81515 [asinfra3173@gmail.com](mailto:asinfra3173@gmail.com)

Office : Haware Centurian Mall, Plot No.88-91 Sector 19A, Opp. HP Petrol Pump, Seawoods (E), Navi Mumbai - 400706



Ministry of Road Transport  
and Highways  
Government of India

