



Our Range



Electric Forklift Trucks
1.5 to 3 tonne

Diesel Forklift Trucks
1.5 to 3 tonne

Diesel Forklift Trucks
4 to 10 tonne

Diesel Forklift Trucks
12 to 20 tonne

LPG Forklift Trucks
1.5 to 3 tonne



Hand Pallet Truck
2.5 tonne

Power Pallet Truck
2 tonne

Fully Electric Stacker
1.5 tonne

Articulated Forklift Trucks
1.3 to 2 tonne

Tow Truck
5 tonne



CROWN

Warehousing Equipment



KOMATSU

Forklifts



TENNANT

Industrial Cleaning Equipment



HUBTEX

Side Loaders



MANITOU

Rough Terrain Equipment

DISTRIBUTION: Our network of 15 company owned branches brings us closer to customers across India. This also gives us the edge to distribute equipment from global giants including Crown, Manitou, Tennant and Hubtex in India.

GLOBAL FOOTPRINT: Our quest for the world market has spurred us to establish an overseas branch and service center in Sharjah, UAE, besides a wide network of dealers all over the Middle East, Africa, South Asia and Latin America. This is only the beginning of our quest for a globally significant presence.



| MATERIAL HANDLING

GODREJ & BOYCE MFG. CO. LTD.

Plant 16, Pirojshanagar, Vikhroli, Mumbai 400079

• Tel.: +91 22 6796 4660 / 73 • Fax: +91 22 6796 1519

• E-mail: mhemktg@godrej.com • url: <http://godrejmh.in>

Overseas Branch and Service Centre,

SAIF Zone, P. O. Box 8549, Sharjah, U.A.E.

• Tel.: 00 971 65570866 • Mob.: 00 971 504629701

• Fax: 00 971 65570966 • E-mail: vinod@godrej.ae

Branches & Service Centres

- Mumbai : 022 67961725 / 67961291
- Pune : 020 66255121-22
- Ahmedabad : 079 66060646 / 66060701 / 66060606
- Indore : 0731 4069335 / 2532917
- Chennai : 044 66544431-32
- Bangalore : 080 66472251
- Kochi : 0484 6612777 / 6612609
- Hyderabad : 040 66431203
- Vizag : 0891 2517930 / 2746511-2-3
- Delhi : 011 66507340 / 50
- Chandigarh : 0172 5012525 / 5037738
- Jaipur : 0141 6701441/2
- Lucknow : 0522 6754961
- Kolkata : 033 66013771-75
- Bhubaneswar : 0674 2374626

Represented by:

UNO 05 / 09 REVISION: 00

1.5 to 3 tonne

Diesel Forklifts



India's No.1 Forklift Trucks

About us

Welcome to the amazing world of Godrej - For over a110 years, a USD 2 billion engineering and consumer products colossus - is one of India's most trusted and respected names. A world where technology goes hand in hand with people. Where innovation is the breath of existence. Where tomorrow is moulded today and where more than 14,000 people work towards the common goal of excellence. At a sprawling industrial garden township with more than 20 manufacturing units, we represent fields as diverse as Industrial Products, Office Automation, Office Equipment, Household Appliances to Security Equipment, Material Handling Equipment, Consumer Products, Chemical, Agro Products and Spacecraft Engines.

We at Godrej Material Handling Equipment Division:

Over forty years ago, Godrej manufactured the first Forklift Truck in India, pioneering the industry. We are the undisputed markets leaders for material handling equipment in the country for over a decade. Operating in Mumbai from a 12000 sq m manufacturing plant, which is ISO 9001 and ISO 14001 certified by RW-TUV of Germany, we deliver a wide range of Forklift trucks, Attachments and Warehousing Equipment to customers in India and abroad.

POWERHOUSE – DRIVE TRAIN

The drive train is the heart of every forklift truck, comprising of engine, transmission and drive axle. It provides acceleration, speed and gradeability ensuring higher productivity and faster operating cycle times.

ENGINE: 4 Stroke, 4 cylinder water cooled diesel engine with heavy duty dry type air cleaner, dual fuel filter, lubrication oil filter and protecto fuel filter cap. We are the only manufacturer to offer several engine options on our Forklifts Trucks.

TRANSMISSION: Automatic transmissions are best suited for variable speed - variable load applications. Torque multiplication at lower speeds results in faster acceleration giving excellent gradeability. Direction reversal is possible with the flick of a lever. This eliminates manual clutching and declutching resulting in reduced operator fatigue and allows the operator to focus completely on the load. We are the only Indian manufacturer of Forklifts to produce the Automatic Transmission in-house.

DRIVE AXLE: The drive axle is designed with 4.4:1 final gear reduction through fully enclosed ring gear and pinion. Axle end gear reduction within the drive axle assembly develops maximum torque at the drive wheel. Reduced torsional forces in differential and pinion shafts gives increased life and reliability to the drive line. Braking torque multiplication results in quick responsive braking with reduced pedal effort.

56 hp (gross)
@ 2300 rpm



Engine options:
Simpsons S433 / TATA 4SP / Kirloskar 3R1040

Option of
Fluid Coupling Transmission

A powerful engine with a responsive automatic transmission and drive axle gives superior acceleration, gradeability, travel & lift/ lower speeds

RUGGEDNESS & STABILITY



FRAME: The durability, stability and power of a machine are derived from the strength of its structural framework. Our rugged, compact, monocoque frame construction with integral fuel and hydraulic tank provides a very stable platform for the complete forklift.

MAST: A high-strength, low-deflection mast with variable retainment mast rollers easily accommodates offcentre loads.

OVERHEAD GUARD: Driver's overhead guard developed with Finite Element technique, ensures operator's safety on all Godrej Forklift Trucks. It protects the driver from falling objects and also provides excellent upward visibility.

Monocoque construction with built-in fuel and hydraulic tanks provides strength and stability



ENHANCED PRODUCTIVITY & PERFORMANCE



- Higher travel, lifting and lowering speed reduces operating cycle times and increases throughput.
- High Visibility Mast for quick and safe handling of material
- Feather touch power steering system allows sharper and effortless maneuvering in aisles
- Easy mounting and dismounting of forks and various attachments
- Excellent gradeability for climbing steeper gradients with load
- Container Stuffing and Destuffing made easy with container mast (optional)

*Lifting & Lowering Speed of 0.5 m/s
Travel Speed of 18 km/h and Gradeability upto 28%*



& Accessories

Equipment

- Automatic Torque Converter Transmission
- Clear View Mast with MFH 3300 / 3660 mm
- All-welded, High Visibility Overhead Guard
- Foot operated Hydraulic Service Brake
- Hand operated Parking Brake
- Adjustable and Comfortable Operator Seat
- ITA Class II / III Carriage
- Pneumatic Tyres
- Hydrostatic Power Steering
- Return Hydraulic Filter / Suction Hydraulic Strainer
- Load Lowering Valve, Hose Burst Valve
- Neutral Safety Switch
- 2-Spool Control Valve with Pressure Relief & Tilt Lock
- Vertical Exhaust
- Floor Mat
- Electric Horn
- Pair of forks
- Load Sensing Valve

Automotive type Instrument Cluster

- Fuel Gauge
- Hour Meter
- Battery Charging Indicator
- High Water / Coolant Temperature Indicator
- Low Engine Oil Pressure Indicator
- High Transmission Oil Temperature Indicator
- Parking Brake 'ON' Indicator
- Direction Indicator

Head Lights



Tail Lights



Spark Arrestor



Optional Equipment

- Engine Options (Tata 4SP, Kirloskar 3R 1040)
- Electric power shift single speed automatic transmission with wet disc breaks, inching control and 23% gradeability
- Fluid Coupling Transmission
- 2 Stage Mast upto MFH 5500 mm
- 3 Stage Mast upto MFH 7200 mm
- Solid Tyres
- Non - marking Tyres
- Dual Drive (4 front wheels)
- Longer forks (1200 mm - 2000mm)
- Customized Color Scheme
- Adjustable Steering Column
- Suspension seat with safety belt

Optional Accessories

- Enclosed Operator Cabin
- Exhaust Gas Purifier (Oxycat Gas Purifier)
- Flashing Beacon Light
- Fork Extensions
- Head and Tail Lights
- Maintenance Tool Kit
- Tarpaulin Cover on Overhead Guard
- Rear View Mirrors
- Reversing Alarm
- Reversing Spotlight
- Spark Arrestor
- Towing Arrangement
- Water Muffler

Attachments

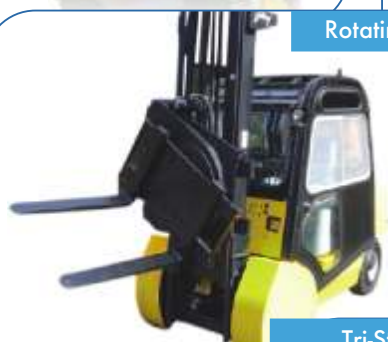
Shovel



Parrot Beak



Rotating Forks



Drop Bottom Dumper Box



Tri-Stacker



Fork Mounted Crane



Baleclamps



Prong



Four Drum Grab



Fork Positioner



Stoker



Paper Roll Clamp



SUPERIOR ERGONOMICS

- Spacious operator cell with executive class leg room
- Adjustable driver's seat for comfortable driving
- Low step height for easy and safe entry / exit
- Ingress / egress from either side of the truck
- Knob on steering wheel facilitates single hand operation
- Soft touch accelerator and brake pedal for fatigue-free operation
- Clear View Mast for excellent forward and upward visibility
- Low position cowl and ergonomically placed controls makes material handling a pleasure

Ergonomically designed and positioned controls, place everything you need to see, reach and hold precisely where the operator will expect them thus make for a comfortable driving experience



MAINTAINABILITY & SERVICEABILITY



- Wide opening engine hood provides easy access for maintenance
- Easily detachable floor plates allow clear access to the drive train
- Easy accessibility for checking and maintaining oil levels

Our Comprehensive Service Network, Rapid Parts Supply and Short Response Times lead to CUSTOMER DELIGHT



SAFETY

We invest in developing techniques that continuously improve our processes to deliver reliable and durable equipment.

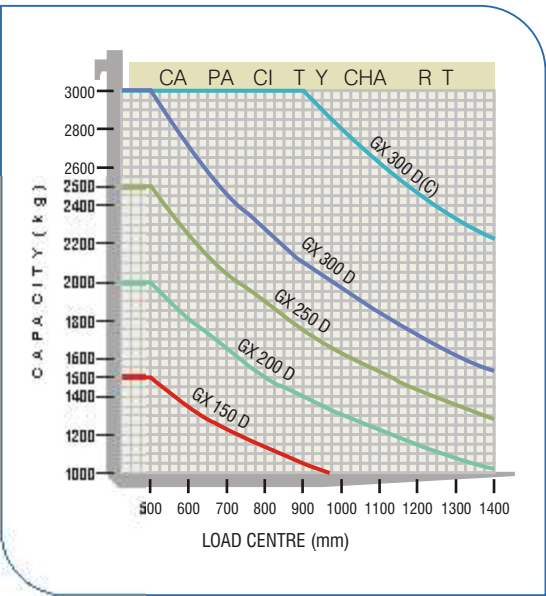
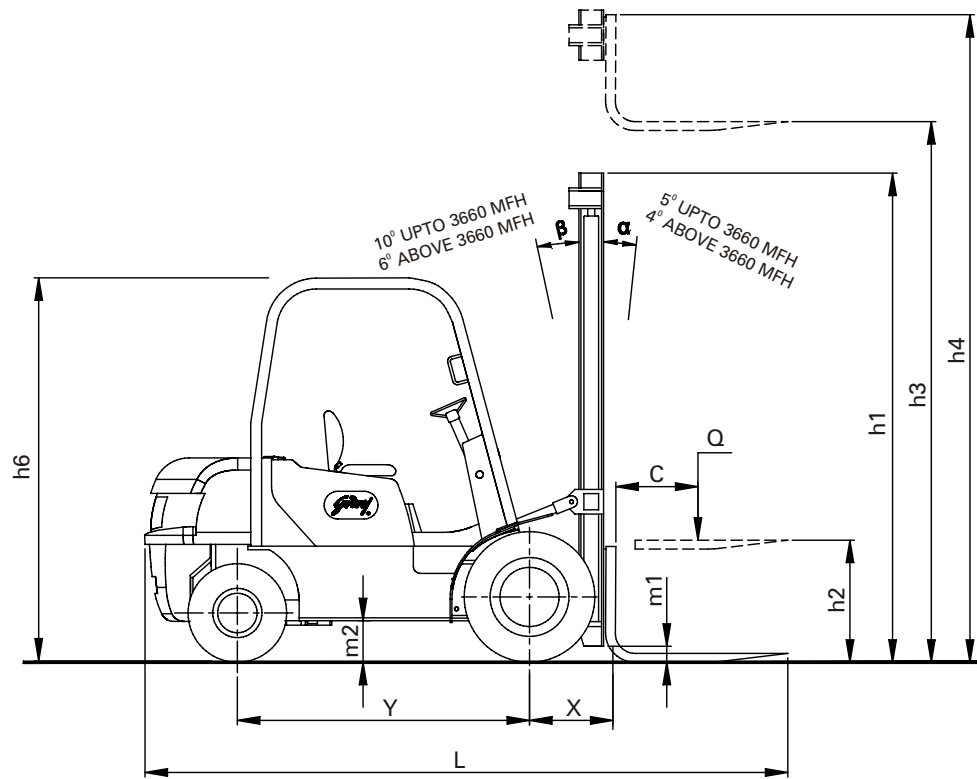
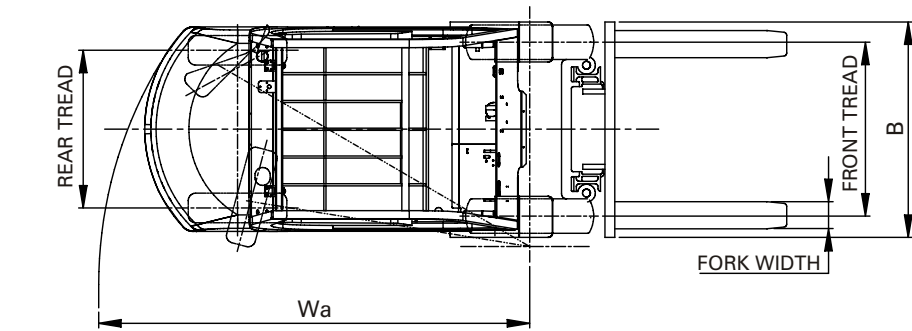
- Neutral start switch allows engine to start with direction control lever in neutral position only
- High coolant temperature and low engine oil pressure indicators help keep a check on the vital parameters of the truck
- Hydraulic brakes conform to IS: 9701(1980)
- Flow regulating valve automatically regulates lowering speed for greater safety and reduces lowering speed with heavier load
- Hose burst valve ensures controlled lowering in the unlikely event of hydraulic hose failure
- Tilting of the mast is controlled by a counterbalanced valve built into the main hydraulic valve. This prevents the mast from over-running in the forward direction while carrying and tilting the load.
- Sturdy overhead guard protects the operator
- Load backrest supports load and prevents accidental falling of load onto the mast or operator

There is an in-built mechanism that either prevents a mistake from being made or makes the mistake obvious at a glance



Specification

CHARACTERISTICS									
	MODEL	GODREJ MODEL NUMBER			GX 150 D	GX 200 D	GX 250 D	GX 300 D	GX 300 D(C)
CHARACTERISTICS	CAPACITY	AT LOAD CENTRE		kg	1500	2000	2500	3000	3000
	LOAD CENTRE	DISTANCE		mm	500	500	500	500	900
	POWER TYPE	DIESEL, IC ENGINE			DIESEL	DIESEL	DIESEL	DIESEL	DIESEL
	NO. OF WHEELS	SINGLE (FRONT / REAR) / DUAL (FRONT / REAR)			(2 / 2) / (4 / 2)	(2 / 2) / (4 / 2)	(2 / 2) / (4 / 2)	(2 / 2) / (4 / 2)	(4 / 2)
DIMENSIONS	FORKS	THICKNESS x WIDTH x LENGTH		mm	40 x 80 x 1000	40 x 80 x 1000	45 x 100 x 1000	45 x 100 x 1000	45 x 100 x 1200
	OVERALL DIMENSIONS	OVERALL LENGTH WITH FORKS	L	mm	3580	3580	3700	3700	4320
		OVERALL WIDTH (SINGLE / DUAL) DRIVE	B	mm	1210 / 1650	1210 / 1650	1210 / 1650	1210 / 1650	1630
		OVERHEAD GUARD HEIGHT	h6	mm	2130	2130	2130	2130	2130
		DRIVER SEAT HEIGHT		mm	1150	1150	1150	1150	1150
		GROUND CLEARANCE AT CENTER OF WHEELBASE	m2	mm	200	200	200	200	200
		GROUND CLEARANCE UNDER MAST	m1	mm	90	110	110	110	110
	TURNING RADIUS	SINGLE / DUAL DRIVE	Wa	mm	2460 / 2500	2460 / 2500	2500 / 2600	2500 / 2600	3100
	FRONT OVERHANG		x	mm	450	450	450	450	530
	RIGHT ANGLE AISLE WIDTH	ADD LOAD LENGTH AND CLEARANCE		mm	2910	2910	2950	2950	3550
INTERSECTING AISLE WIDTH	ADD CLEARANCE (FOR SINGLE DRIVE)		mm	2090	2090	2200	2200	2800	
FORK SPREAD	SINGLE DRIVE / DUAL DRIVE			Adjustable upto 1000mm / 1475mm	Adjustable upto 1000mm / 1475mm	Adjustable upto 1000mm / 1475mm	Adjustable upto 1000mm / 1475mm	Adjustable upto 1000mm / 1475mm	
PERFORMANCE	TRAVEL SPEED	LADEN / UNLADEN		km / h	18 / 18	18 / 18	18 / 18	18 / 18	18 / 18
	LIFT SPEED	LADEN / UNLADEN		m / s	0.5 / 0.5	0.5 / 0.5	0.5 / 0.5	0.5 / 0.5	0.4 / 0.4
	LOWER SPEED	LADEN / UNLADEN		m / s	0.5 / 0.5	0.5 / 0.5	0.5 / 0.5	0.5 / 0.5	0.4 / 0.4
	MAST TILT	FORWARD / BACKWARD UPTO 3660	α / β	deg	5 / 10	5 / 10	5 / 10	5 / 10	5 / 10
		FORWARD / BACKWARD BEYOND 3660 UPTO 5500	α / β	deg	4 / 6	4 / 6	4 / 6	4 / 6	4 / 6
	GRADEABILITY	LADEN / UNLADEN		%	28	28	28	28	25
	TOTAL WEIGHT	UNLADEN		kg	3800	3800	4200	4200	5400
	DRAWBAR PULL	LADEN		kg	1000	1000	1000	1000	1000
	TYRES	FRONT - PNEUMATIC			6.50 x 10 x 10 PR	7.0 x 12 x 12 PR	7.0 x 12 x 12 PR	8.15 x 15 x 14 PR	7.0 x 12 x 12 PR
		FRONT - SOLID CUSHION (ID x WIDTH)		mm	585 x 165	660 x 180	660 x 180	660 x 180	660 x 180
REAR - PNEUMATIC				6.50 x 10 x 10 PR	6.50 x 10 x 10 PR	6.50 x 10 x 10 PR	6.50 x 10 x 10PR	6.50 x 10 x 10 PR	
REAR - SOLID CUSHION (ID x WIDTH)			mm	585 x 165	585 x 165	585 x 165	585 x 165	585 x 165	
CHASSIS	WHEEL BASE	DISTANCE	Y	mm	1620	1620	1700	1700	2100
	TREAD	FRONT: SINGLE / DUAL		mm	990 /1490	990 /1490	1035 / 1490	1035 / 1490	1490
		REAR		mm	940	940	940	940	940
	BRAKES	SERVICE BRAKE			Hydraulic	Hydraulic	Hydraulic	Hydraulic	Hydraulic
PARKING BRAKE				Mechanical	Mechanical	Mechanical	Mechanical	Mechanical	
ENGINE SPECS	ENGINE	ENGINE MAKE / MODEL			Simpsons / S 433	Simpsons / S 433	Simpsons / S 433	Simpsons / S 433	Simpsons / S 433
		RATED OUTPUT AT RPM		hp / rpm	56 / 2300	56 / 2300	56 / 2300	56 / 2300	56 / 2300
		CYCLE / CYLINDERS / DISPLACEMENT (CC)			4 / 4 / 3330	4 / 4 / 3330	4 / 4 / 3330	4 / 4 / 3330	4 / 4 / 3330
	TRANSMISSION	TORQUE @ RPM		Nm / rpm	220 @ 1400	220 @ 1400	220 @ 1400	220 @ 1400	220 @ 1400
		NO OF SPEEDS FORWARD / REVERSE			2 / 2	2 / 2	2 / 2	2 / 2	2 / 2
		FUEL TANK		litre	58	58	60	60	60
	HYDRAULIC OIL TANK		litre	58	58	60	60	60	
	ENGINE SUMP OIL		litre	6.5	6.5	6.5	6.5	6.5	
	TRANSMISSION OIL		litre	7	7	7	7	7	
	FRONT AXLE LOAD	LADEN		kg	4260	5080	6000	6600	7680
		UNLADEN		kg	1860	2020	1900	1900	2680
	REAR AXLE LOAD	LADEN		kg	1200	800	700	900	780
UNLADEN			kg	2060	1880	2200	2600	2720	
All dimensions & specifications are subject to variation within ± 1%									



Mast Dimensions & Capacity

TYPE OF MAST	MFH (h3)	FL (h2)	OAHL (h1)	OAHR* (h4)	GX 150 D		GX 200 D		GX 250 D		GX 300 D		GX 300 D (C)*	
					CAPACITY		CAPACITY		CAPACITY		CAPACITY		CAPACITY	
					SINGLE DRIVE	DUAL DRIVE	SINGLE DRIVE	DUAL DRIVE	SINGLE DRIVE	DUAL DRIVE	SINGLE DRIVE	DUAL DRIVE	SINGLE DRIVE	DUAL DRIVE
2 STAGE CV	2100	105	1850	2850/2925	1500	1500	2000	2000	2500	2500	3000	3000	3000	3000
2 STAGE CV	3000	105	2300	3600	1500	1500	2000	2000	2500	2500	3000	3000	3000	3000
2 STAGE CV	3300	105	2400	3900	1500	1500	2000	2000	2500	2500	3000	3000	3000	3000
2 STAGE CV	3660	105	2630	4260	1500	1500	2000	2000	2500	2500	3000	3000	3000	3000
2 STAGE CV	4600	105	3100	5200	NA	1500	1500	1700	2200	2400	2600	2900	2500	2500
2 STAGE CV	5500	105	3550	6100	1500	1300	NA	1500	NA	2200	NA	2500	2000	2000
2 STAGE CV WITH FFL	3000	1530	2150	3600	1500	1500	2000	2000	2500	2500	3000	3000	3000	3000
2 STAGE CV WITH FFL	3660	1980	2580	4260	1500	1500	2000	2000	2500	2500	3000	3000	3000	3000
3 STAGE CV WITH FFL	4500	1530	2150	5100	1500	1500	2000	1700	2300	2500	2750	3000	2500	2500
3 STAGE CV WITH FFL	4800	1650	2250	5400	1500	1500	1500	1500	2100	2300	2425	2800	2200	2200
3 STAGE CV WITH FFL	5500	1925	2480	6100	NA	1300	NA	1300	NA	2200	NA	2500	2000	2000

Note: All dimensions in mm and capacity in kg
Note: 6.0 m & 7.2 m mast available on request

*Add 600mm if load backrest is offered

*Single drive available on special request

MFH : Maximum Fork Height
FL : Free Lift
FFL : Full Free Lift
OAHL : Overall Height Lowered
OAHR : Overall Height Raised
CV : Clear View

All specifications are subject to change without prior notice

Colours shown in the catalogues are indicative colours. Our Standard Colour is Traffic Yellow and Jet Black.

*The image shown in the leaflet are representative. Actual equipment may differ in colour and optional accessories.