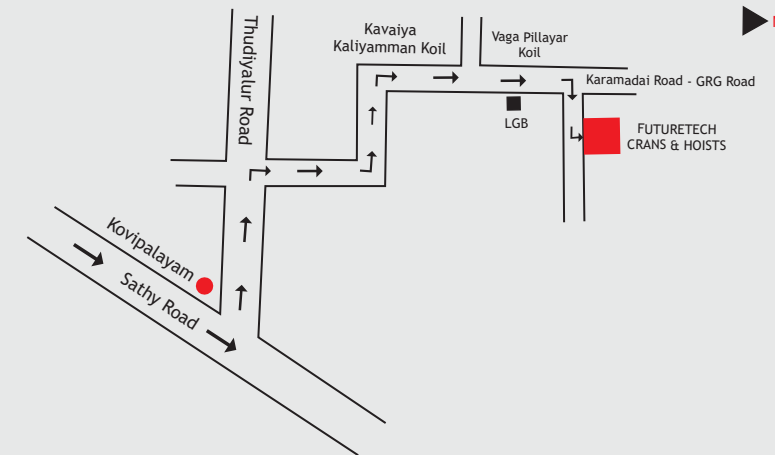


FUTURETECH CRANES & HOISTS
Kattampatti Post, Annur Taluk
Coimbatore - 641 107.



Futuretech Cranes & Hoists

SF No.5/122 D, GRG Road
Varathaiyampalayam
Kattampatti Post, Annur Taluk
Coimbatore - 641 107.
Mobile : 99439 66665, 98944 66665, 98436 88198
Email: future.techcrane@gmail.com
Web : www.futuretechcranes.com



Coimbatore



- EOT Cranes
- Electric Wire Rope hoists
- JIB Cranes

Product & Services

- ✘ EOT Cranes
 - Single Girder
 - Double Girder
 - Under slung
- ✘ Gantry Crane
- ✘ Jib Crane
- ✘ HOT Cranes
- ✘ Overhead Traveling Cranes
- ✘ Material Handling Trolleys
- ✘ Goods Lift
- ✘ Crane Spares
- ✘ Heavy Fabrication Services
- ✘ Heavy Duty and Goliath Cranes
- ✘ Wire Rope Hoists
- ✘ Heavy Duty Cranes
- ✘ Customized Products

- ✘ Material Handling Equipment
- ✘ A Frame Cranes
- ✘ Flame Proof Cranes
- ✘ Wall Bracket
- ✘ Micro Speed Gear Boxes
- ✘ Industrial Elevators
- ✘ Crane Bridge Girders
- ✘ Cranes Accessories
- ✘ Material Handling Equipment for Warehouses
- ✘ Lift Hoists
- ✘ Scissor Lift for Automotive Industry
- ✘ Automzied Cranes

Our team comprises:

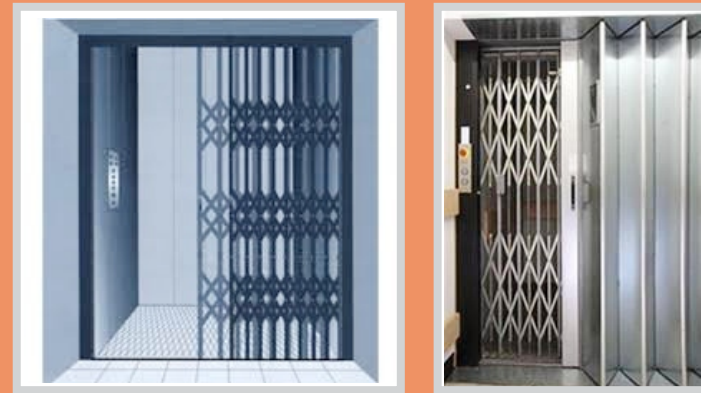
- ◆ Raw material procuring Agents
- ◆ Project Engineers
- ◆ Technicians
- ◆ Administrative staff
- ◆ Quality Controllers
- ◆ Skilled Welders
- ◆ Warehouse Experts
- ◆ Marketing and Sales Professionals
- ◆ Service Team

- ☆ Durability
- ☆ Competitive price
- ☆ Experienced professionals
- ☆ Product quality
- ☆ After - sale support
- ☆ Most reliable



The history of cranes is closely linked to the name FUTURETECH and its products in South India. Since more than 12 years, our engineers have been working on the optimization on our machines with the goal to increase the capacity of the cranes as well as the safety and the comfort of the operators.

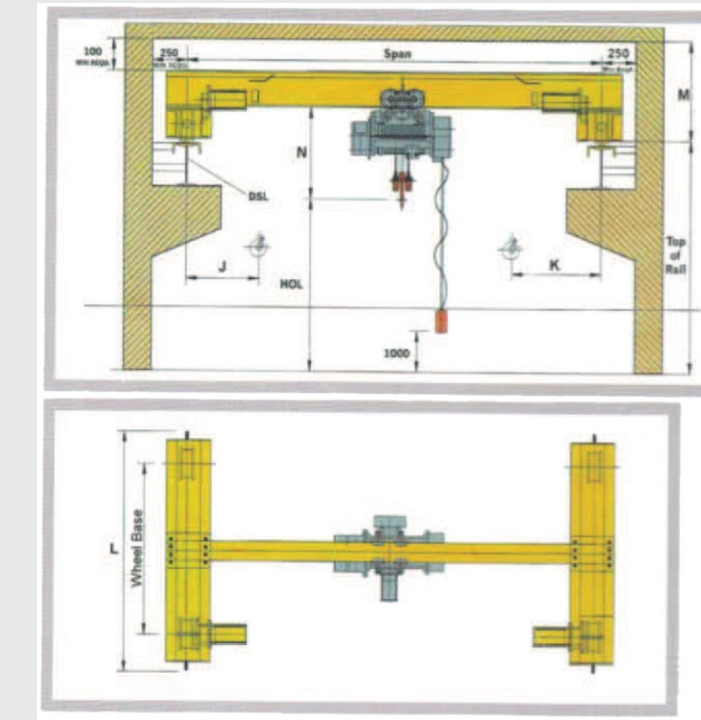
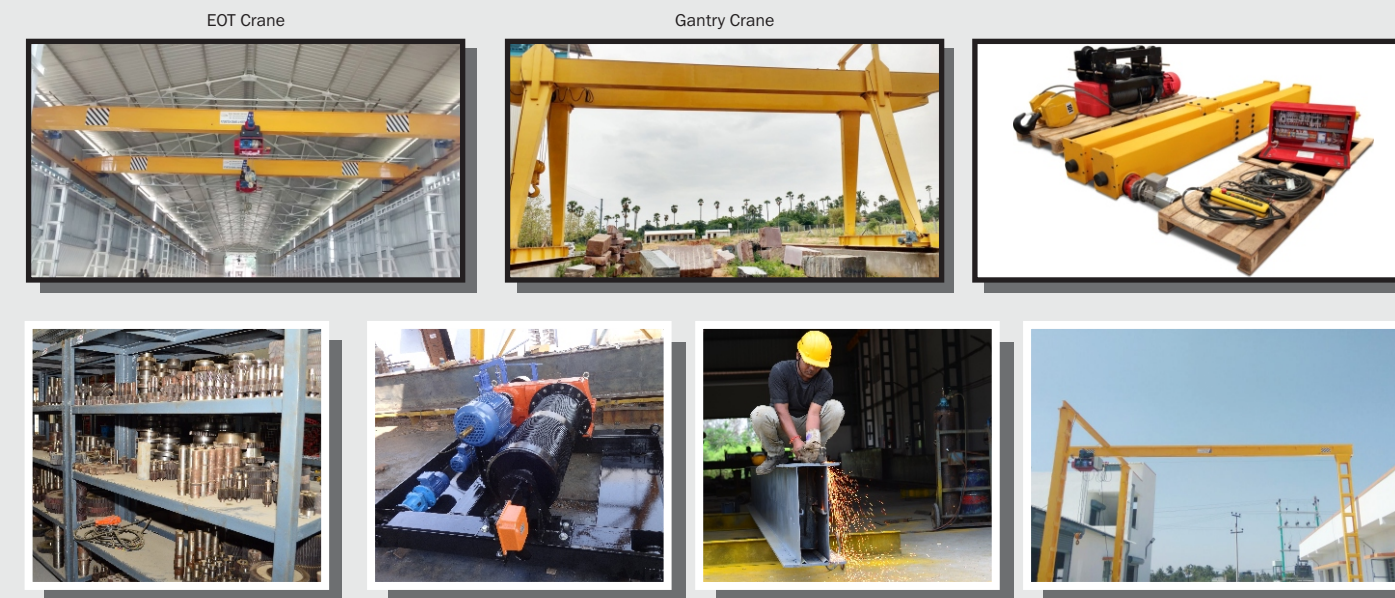
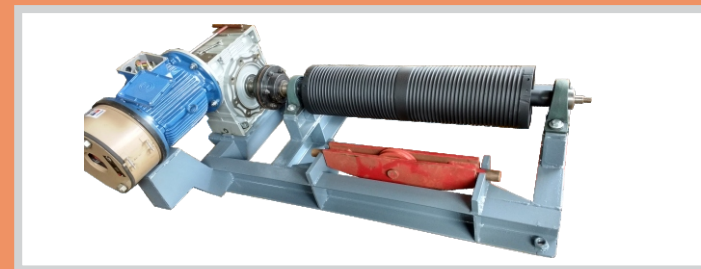
Futuretech cranes & hoists is a diversified manufacturer of a Wide range of equipment primarily for the Manufacturing, construction, infrastructure, utility maintenance and materiel handling Equipments.



Goods Lift



Wire Rope Hoist



Safe Working Load & Lift	Span (Mtrs.)	J (mm)	K (mm)	L (mm)	Wheel Base (mm)	M (mm)	N Head room (mm)	Wheel Load (Ton)	Wright (kg)	Rail Size (mm)
2000 kg 6.0 Mtrs.	6'	850	750	1950	1200	500	820	1.20	1300	40
	8'	850	750	2550	1800	600	820	1.30	1650	40
	12'	850	750	3150	2400	700	820	1.55	2300	40
	15'	850	750	3750	3000	830	820	1.75	2990	40
	18'	850	750	4350	3600	950	820	2.04	4150	40
	21'	850	750	4950	4200	1075	820	2.20	4750	40
3000 kg 6.0 Mtrs.	24'	850	750	5550	4800	1180	820	2.23	4850	40
	27'	850	750	6150	5400	1300	820	2.50	5840	40
	6'	900	810	1950	1200	650	1050	1.69	1490	40
	9'	900	810	2550	1800	750	1050	1.87	1910	40
	12'	900	810	3150	2400	870	1050	2.10	2650	40
	15'	900	810	3750	3000	900	1050	2.40	3680	40
5000 kg 6.0 Mtrs.	18'	900	810	4350	3600	950	1050	2.65	4410	40
	21'	900	810	4950	4200	1150	1050	2.67	4640	40
	24'	900	810	5550	4800	1225	1050	2.85	5310	40
	27'	900	810	6150	5400	1400	1050	3.04	6090	40
	6'	900	810	1950	1200	650	1050	2.62	1845	40
	9'	900	810	2550	1800	750	1050	2.92	2450	40
7500 kg 6.0 Mtrs.	12'	950	810	3150	2400	900	1050	3.23	3400	40
	15'	900	810	3750	3000	910	1050	3.55	4260	40
	18'	900	810	4350	3600	1020	1050	3.60	4410	40
	21'	900	810	4950	4200	1170	1050	3.80	5300	40
	24'	900	810	5550	4800	1300	1050	4.30	7325	40
	27'	900	810	6150	5400	1450	1050	4.60	8660	40
10000 kg 6.0 Mtrs.	6'	1200	1100	1950	1200	750	1600	4.00	2780	40
	9'	1200	1100	2550	1800	800	1600	4.48	3650	40
	12'	1200	1100	3150	2400	900	1600	4.79	4480	40
	15'	1200	1100	3750	3000	950	1600	5.07	5300	50
	18'	1200	1100	4350	3600	1075	1600	5.43	6550	50
	21'	1200	1100	4950	4200	1200	1600	5.75	7700	50
10000 kg 6.0 Mtrs.	24'	1200	1100	5550	4800	1350	1600	6.28	8650	50
	27'	1200	1100	6150	5400	1450	1600	6.77	11600	50
	6'	1200	1100	1950	1200	800	1600	5.13	3950	40
	9'	1200	1100	2550	1800	900	1600	5.67	3950	40
	12'	1200	1100	3150	2400	950	1600	6.11	5300	50
	15'	1200	1100	3750	3000	1000	1600	6.62	6450	50
10000 kg 6.0 Mtrs.	18'	1200	1100	4350	3600	1075	1600	7.03	8100	50
	21'	1200	1100	4950	4200	1200	1600	7.50	10000	50
	24'	1200	1100	5550	4800	1350	1600	8.00	11240	50



JIB Crane