



DEVTA

Since 1989

DEVTA ELECTRICALS

ISO-9001:2015 CERTIFIED COMPANY



Turnkey Electrification Projects



Customized MS / Stainless Steel Enclosure Upto IP 65



Heavy Cable Tray / Cable Management System



Aetherlumen - LED Lighting Fixture



IEC - 61439 1/2 Certified Switch Board / Control Panel



Industry



Renewable



Bank



Hospital



Mining



Airport



Government



Data Center



Residential



Pharmaceutical



Chemical



TECHNICAL SPECIFICATION OF ELECTRICAL CONTROL PANEL

- 1) Short Circuit Level: 50 kA CPRI Approved Panel Manufacturer.
- 2) Schneider Electric Prisma Panel Tested and Certified as per IEC 61439 Part 1/2

BUS BAR SYSTEM : Electrolytic Copper Bus bar – ETP Grade , 99.94% to 99.99% Purity , Density –1.4 Amps / sq.mm as per IS Standard , Aluminum Bus bar – ETP E91E Grade Density – 0.8 Amps/ sq.mm as per IS Standard with Heat Shrinkable Sleeves

INGRESS PROTECTION : IP 42 to IP 65 Government Certified Enclosure, Impact Resistance upto IK 10

STRUCTURE : Load Bearing – 2 mm and Non Load Bearing 1.6mm CRCA Sheet

POWDER COATING : 7 Tank Process with Epoxy Powder Coating, Shade- RAL -7032/RAL -7035

WIRING : Fire Retardant Low Smoke and Low Halogen Wire used for Control and Power Wiring.

FORM SEPARATION : Form Separation from Form 1 to Form 4B

PCC PANEL

Power Control Center Panel are used for Distribution and Control of Power with Protection of Power Source and Load Side Equipment from Short Circuit, OverLoad , Earth Fault , Under and Over Voltage Fault Etc. The Fault Levels as high as 50kA, 65kA for 1 Second. The Appropriate Busbar System (Copper and Aluminum) are incorporated to Suit the Fault Level as well as Restricted Temperature Rise Above Ambient. Ingress Protection for Enclosure from IP 42 to IP 67 for both Indoor and Outdoor Application.



MCC PANEL

Motor Control Center Panel are used for controlling Individual or a group of Motor Manually, Automatically ,PLC, SCADA using DOL starter, Star- Delta Starter, VFD with Bypass Starter, Soft Starter etc for various Application such as WTP, ETP Plant, Petro-Chemical Plant, Bio-Diesel Plant, Cement Plant & other Sector.It has Various protections such as Short Circuit, Overload, Reverse Rotation, Speed Control, Torque Limiting, Single Phase, Reverse Phasing, Phase Sequence, Rotor Lock Current, High Winding temperature, Under - Over Voltage, Earth Fault, Phase Imbalance Etc.



APFC PANEL

Automatic Power Factor Correction Panel are installed for improvement of Power Quality by maintaining Power Factor as per requirement between 0.98 to 1.00 PF. We manufacture APFCR/SVG panel as per Requirement using Heavy duty Resin Filled Capacitor, SVG Cassettes and Reactors for limiting the Inrush Current with Switching Controlgear such as Contactor and Thyristor Switching Module and both Hybrid APFCR Panel.





AMF/ DG SYNCHRONIZATION PANEL



Auto Mains Failure Panel are used to Control, Start/ Stop of Diesel Generator set in accordance with the availability of Main Power Supply which can be controlled Automatically/ Manually and Remotely. AMF Panel are made of Various Capacity as per DG Set Requirement. DG Synchronization Panel Controls and Synchronizes two or More DG Sets as per Load Requirement on Failure of one Source or Insufficient Power Availability. More than One DG is used in Parallel to share Total Load on the System . To synchronize one or more DG Sets it is required to match all Parameter such as Voltage Frequency , Speed , Phase Sequence and Phase Angle.

AUTOMATION PANEL



The Programmable Logic Controller is the Brain of Automation Panel. These Panel are Integral Part of Industrial Automation Project as well as wide application in Standalone Control System and Complex Processes and Industry. The Automation Panels are integrated with Instruments and Devices , PLC , VFD, PID, SCADA HMI , Servo Controller, Digital Meters and Feedback Loops.

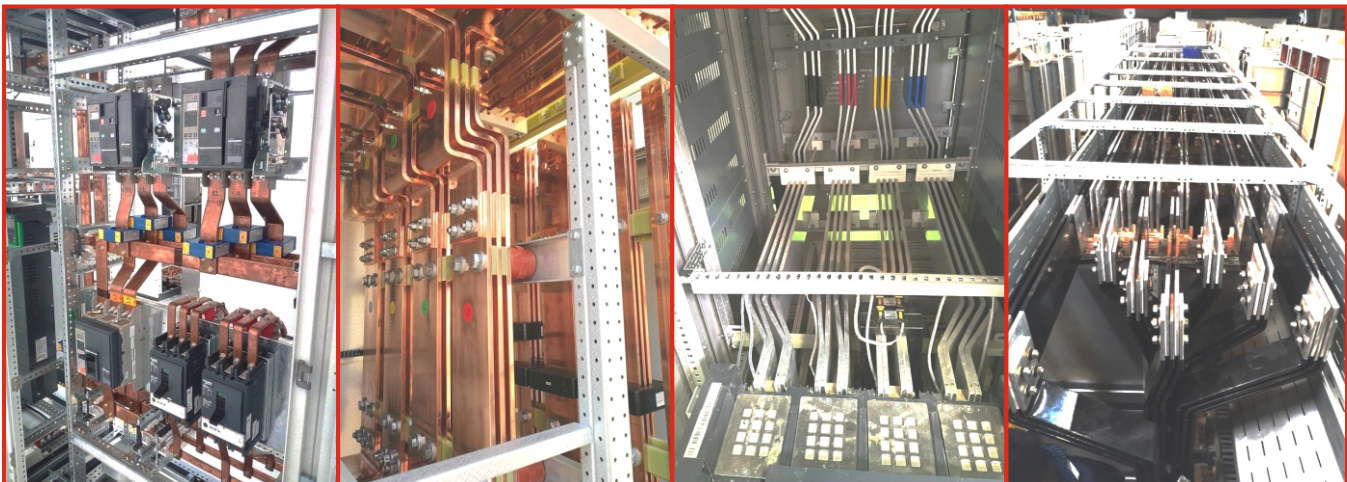


ISOLATION OPERATION THEATER (OT) PANEL

To ensure the safety of patients, the availability and quality of electric power are essential. The electrical installations of operating theatres should enable the continuity of healthcare in all circumstances. Hence OT Panel ensures continuity without any interruption during operation. OT Panels are ingerated with Insulation Monitoring Device, Fault Locator Device , Medical Grade Isolation Transformer as per IEC standard which are tested and certified. The product meet IEC60364-7-710:2016 Electrical installations of buildings—Part 7-710 : Requirements for special installations or locations—Medical locations and IEC 61439-2:2011 Low-voltage switchgear and control gear assemblies—Part2 : Power switchgear and control gear assemblies.



BUSBAR FABRICATION



PERFORATED TYPE CABLE TRAY

Technical Specifications :

Material : Mild Sheet (M.S. Sheet), Aluminum Sheet, Pre- Galvanized Sheet, Stainless Steel, Hot Dip Galvanized Sheet and Powder Coated.

Material Description : Pre-Galvanized Sheet as per IS 277 / 226 / 2079 / 513 Galvanizing as per IS 2629/4759 Minimum - 80 GSM (Pre- Galvanized Sheets) Sheet.

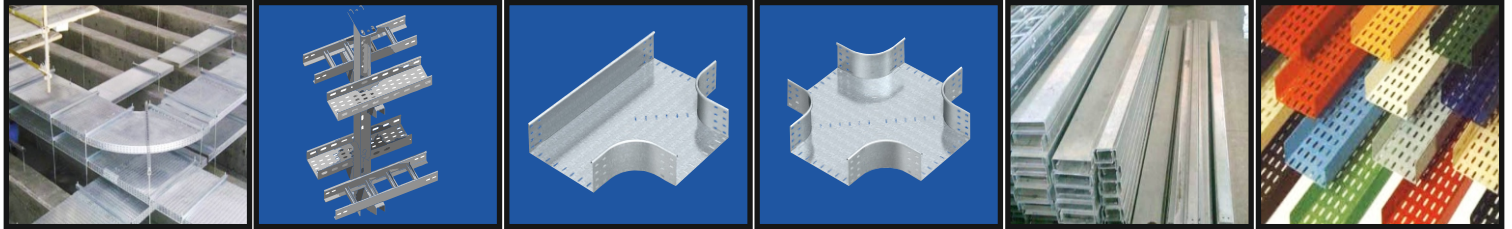
Finish : Hot Dip Galvanization, Powder Coated and Pre-Galvanized (GI).

Size : 50mm to 1000mm, **Height :** 25mm to 100mm.

Length : 1000mm to 3000mm **Thickness :** 1mm to 3mm.

Punching Capsule : Standard Size – 20mm x 10mm Special Size – 16mm x 8mm.

Coupler Size : 25mm / 35mm / 50mm / 75mm X 200mm



LADDER TYPE CABLE TRAY

Technical Specifications :

Material : Mild Sheet (M.S. Sheet) , Aluminum Sheet, Pre- Galvanized Sheet, Stainless Steel, Hot Dip Galvanized Sheet and Powder Coated.

Material Description : Pre-Galvanized Sheet as per IS 277/226/2079/513 Galvanizing as per IS 2629/4759 Minimum - 80 GSM (Pre- Galvanized Sheets) Sheet.

Finish : Hop Dip Galvanization, Powder Coated and Pre-Galvanized (GI).

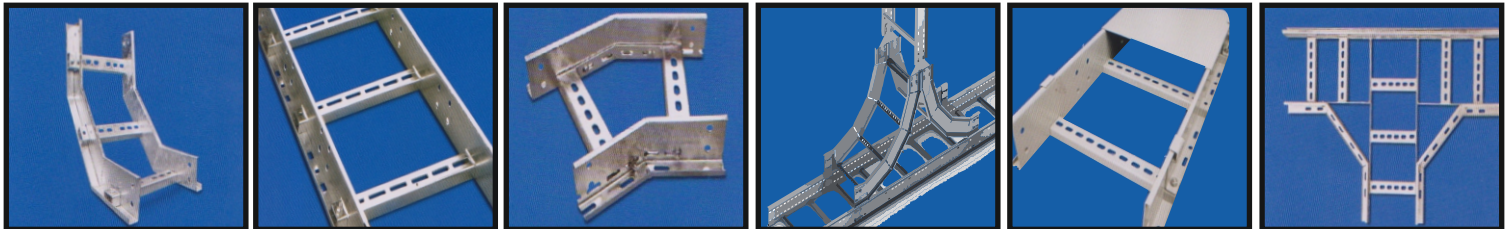
Size : 150mm to 1250mm, **Height :** 50 mm to 150mm.

Length : 1000mm to 3000mm **Thickness :** 1.6 mm to 3mm.

Punching Capsule : Standard Size – 20mm x 10mm, Special Size – 16mm x 8mm.

Runner Size : 30mm x 35mm X 30mm.

Coupler Size : 35mm/50mm/75mm X 200mm.



RACEWAY AND TRUNKING

Technical Specifications :

Material : Mild Sheet (M.S. Sheet), Aluminum Sheet Pre- Galvanized Sheet, Stainless Steel, Hot Dip Galvanized Sheet and Powder Coated.

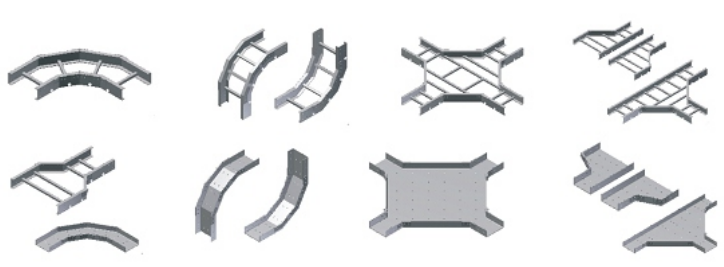
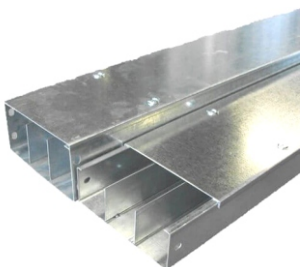
Material Description : Pre-Galvanized Sheet as per IS 277 / 226 / 2079 / 513 Galvanizing as per IS 2629/4759 Minimum - 80 GSM (Pre- Galvanized Sheets) Sheet.

Finish : Hot Dip Galvanization, Powder Coated and Pre-Galvanized (GI).

Size : 50mm to 600mm **Height :** 25mm to 60mm.

Length : 1000mm to 3000mm **Thickness :** 1.6mm to 3mm.

Coupler Size : 25mm / 35mm / 50mm / 75mm X 200mm



AETHERLUMEN

Proudly in Support of



Bulb



9W/12W
**EMERGENCY
LED BULB**



5W/7W/9W
**LED BULB
ALUMINIUM BODY**



12W/15W
**LED BULB
ALUMINIUM BODY**



18W/20W
**LED BULB
ALUMINIUM BODY**



30W/40W/50W
**HAMMER
ALUMINIUM
DIE CAST BODY**



EFFICACY
100-130
(lm/W)



CCT
3000K
6500K



CRI
>80

KEY FEATURES:

PBT + Aluminium Body
Aluminium MCPCB
Surge Protection: 2.5-4kV
WH/WW/NW
3 in 1 (WH+WW+NW)
Wide Voltage Range: 90-300VAC
High Performance Driver
2 Years Warranty*

Batten



5W (1 FEET)
T5 BATTEN



10W (2 FEET)
T5 BATTEN



18W/20W (4 FEET)
T5 BATTEN



36W/40W (4 FEET)
**Aluminium Body
T8 BATTEN**



18W/20W (4 FEET)
**Retrofit LED Tube
T8 BATTEN**



EFFICACY
100-130
(lm/W)



CCT
3000K
4000K
6500K



CRI
>80

KEY FEATURES:

PC/Aluminium Body
Aluminium MCPCB
Surge Protection: 2.5kV
WH/WW/NW
3 in 1 (WH+WW+NW)
Wide Voltage Range: 90-300VAC
High Performance Driver
2 Years Warranty*

Panel Light



8W/15W/22W
4 Inch/6 Inch/8 Inch
**CONCEALED BACK
PANEL LIGHT**



8W/15W/22W
4 Inch/6 Inch/8 Inch
**CONCEALED
PANEL LIGHT**



8W/15W/22W
4 Inch/6 Inch/8 Inch
**CONCEALED
PANEL LIGHT**



8W/15W/22W
4 Inch/6 Inch/8 Inch
**SURFACE
PANEL LIGHT**



8W/15W/22W
4 Inch/6 Inch/8 Inch
**SLIM CONCEALED
PANEL LIGHT**



EFFICACY
100-130
(lm/W)



CCT
3000K
4000K
6500K



CRI
>80

KEY FEATURES:

PC/Aluminium Body
Aluminium MCPCB
Surge Protection: 2.5kV
WH/WW/NW
3 in 1 (WH+WW+NW)
Wide Voltage Range: 90-300VAC
High Performance Driver
2 Years Warranty*

Street Light



15W/20W/36W
**STREET LIGHT
GLASS MODULE**



36W/50W/75W
**STREET LIGHT
GLASS MODULE**



125W/150W/200W
**STREET LIGHT
GLASS FRAME**



18W/36W/50W
**STREET LIGHT
LENS MODULE
BACK CHOKE**



18W/36W/50W
**STREET LIGHT
LENS ECO MODULE
FRONT CHOKE**



EFFICACY
100-130
(lm/W)



CCT
3000K
4000K
6500K



CRI
>80

KEY FEATURES:

Aluminium Zinc Diecast Body
Aluminium MCPCB
Surge Protection: 6-10kV
WH/WW/NW
Wide Voltage Range: 90-300VAC
High Performance Driver
Toughened Glass
2/5 Years Warranty*

High Bay



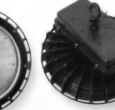
50W/75W/100W
**HIGHBAY
LENS MODULE**



150W/200W
**HIGHBAY
LENS MODULE**



50W/75W/100W
**HIGHBAY
GLASS MODULE**



150W/200W
**HIGHBAY
GLASS MODULE**



EFFICACY
100-130
(lm/W)



CCT
3000K
4000K
6500K



CRI
>80

KEY FEATURES:

Aluminium Zinc Diecast Body
Aluminium MCPCB
Surge Protection: 6-10kV
WH/WW/NW
Wide Voltage Range: 90-300VAC
High Performance Driver
Toughened Glass
2/5 Years Warranty*

Flood Light



30W/50W/75W
**FLOOD LIGHT
DOWN CHOKE**



100W/150W/200W
**FLOOD LIGHT
DOWN CHOKE**



50W/75W/100W
**FLOOD LIGHT
BACK CHOKE**



150W/200W/400W
**FLOOD LIGHT
BACK CHOKE**



EFFICACY
100-130
(lm/W)



CCT
3000K
4000K
6500K



CRI
>80

KEY FEATURES:

Aluminium Zinc Diecast Body
Aluminium MCPCB
Surge Protection: 6-10kV
WH/WW/NW
Wide Voltage Range: 90-300VAC
High Performance Driver
Toughened Glass
2/5 Years Warranty*



CIPLA LIMITED
(PHARMACEUTICAL SECTOR)



GREEN JOULES
(OIL AND NATURAL GAS SECTOR)



SK Logistics
(Logistics and Warehouse Sector)



IIT Bombay
(Central Government/ PSU Sector)



The Raymond Shop
(Retail and Commercial Sector)



MES KERALA PROJECT



DEVTA ELECTRICALS

GOVT. LICENSED ELECTRICAL CONTRACTORS
ISO-9001:2015 CERTIFIED COMPANY

REGD OFFICE & MANUFACTURING UNIT

Devta House, Plot No. W-346, TTC Industrial Area, Rabale MIDC, Thane- Belapur Road, Navi Mumbai-400701.
Contact : 96991 72018 / 98201 38951 | Email : md@devtaelectricals.com | Web : www.devtaelectricals.com